



2016 Fall Headcount

Michigan State	49,317	↓
U of M-Ann Arbor	44,639	↑
Wayne State	27,326	↑
Grand Valley	25,460	↑
Central	24,119	↓
Western	23,109	↓
Eastern	20,923	↓
Oakland	20,012	↓
Ferris	14,159	↓
Saginaw Valley	9,165	↓
U of M-Dearborn	8,942	↓
U of M-Flint	7,916	↓
Northern	7,792	↓
Michigan Tech	7,265	↑
Lake Superior	2,237	↓



Source: HEIDI, WSU website

↑↓ Denote One-Year Enrollment Increase/Decrease



Changes in Enrollment

	20-year % Change
Grand Valley	104.3%
Oakland	76.6%
Saginaw Valley	55.3%
U of M-Flint	41.9%
Ferris	38.1%
U of M-Dearborn	22.8%
Michigan State	22.7%
Central	21.2%
U of M-Ann Arbor	16.6%
Northern	14.7%
Michigan Tech	7.1%
Eastern	-3.9%
Western	-5.0%
Wayne State	-13.0%
Lake Superior	-33.5%



Source: HEIDI – FYES from 1996 to 2016
WSU calculation estimate



Geographic Origin



Geographic Origin Fall Semester 2016

Michigan Residents	23,468
Other States	1,562
Other Countries	430
Total	25,460

Top 6 Counties

Kent	Wayne
Ottawa	Macomb
Oakland	Muskegon



Michigan Resident Undergraduate Headcount



Michigan State	30,501	↓
Grand Valley	20,664	↑
Central	19,221	↓
Eastern	16,838	↓
Wayne State	16,611	↓
Western	16,591	↓
U of M-Ann Arbor	16,312	↓
Oakland	16,147	↓
Ferris	11,984	↓
Saginaw Valley	7,674	↓
U of M-Dearborn	6,710	↓
U of M-Flint	6,150	↓
Northern	6,089	↓
Michigan Tech	4,599	↑
Lake Superior	2,214	↑

Source: HEIDI – Fall 2016, WSU website

↑↓ Denote One-Year Enrollment Increase/Decrease



Graduation Rates



University of Michigan-Ann Arbor	90%
Michigan State University	77%
Grand Valley State University	67%
Michigan Technological University	65%
Central Michigan University	59%
Western Michigan University	54%
University of Michigan-Dearborn	53%
Northern Michigan University	50%
Ferris State University	49%
Oakland University	44%
Eastern Michigan University	40%
Saginaw Valley State University	40%
Lake Superior State University	40%
University of Michigan-Flint	38%
Wayne State University	35%

Source: IPEDS
2009 Cohort



First-time Student Annual Tuition



Source: University Budget Office

Michigan Tech	\$14,634
U of M-Ann Arbor	\$14,402
Michigan State	\$14,109
Wayne State	\$12,269
Central	\$12,150
U of M-Dearborn	\$12,032
Oakland	\$11,970
Western	\$11,793
Ferris	\$11,760
Eastern	\$11,559
Grand Valley	\$11,520
Lake Superior	\$11,089
U of M-Flint	\$10,884
Northern	\$10,012
Saginaw Valley	\$9,345



Financial Aid Available to GVSU Students



Institutional Financial Aid Commitment

	Amount	Increase
2011-12	\$31,139,318	19.32%
2012-13	\$33,688,333	8.18%
2013-14	\$35,134,477	4.29%
2014-15	\$38,121,517	8.50%
2015-16	\$40,429,303	6.05%
2016-17	\$44,015,287	8.86%

Source: GVSU Office of Financial Aid & Scholarships

Types of Financial Aid Available 2015-2016

Need-Based Grants	\$48,581,727
Merit Scholarships	\$32,468,000
Loans	\$179,004,744
Work Study	\$1,422,132
TOTAL	\$261,476,603

Source: GVSU Office of Financial Aid & Scholarships



Net Cost of Tuition for Typical GVSU Student

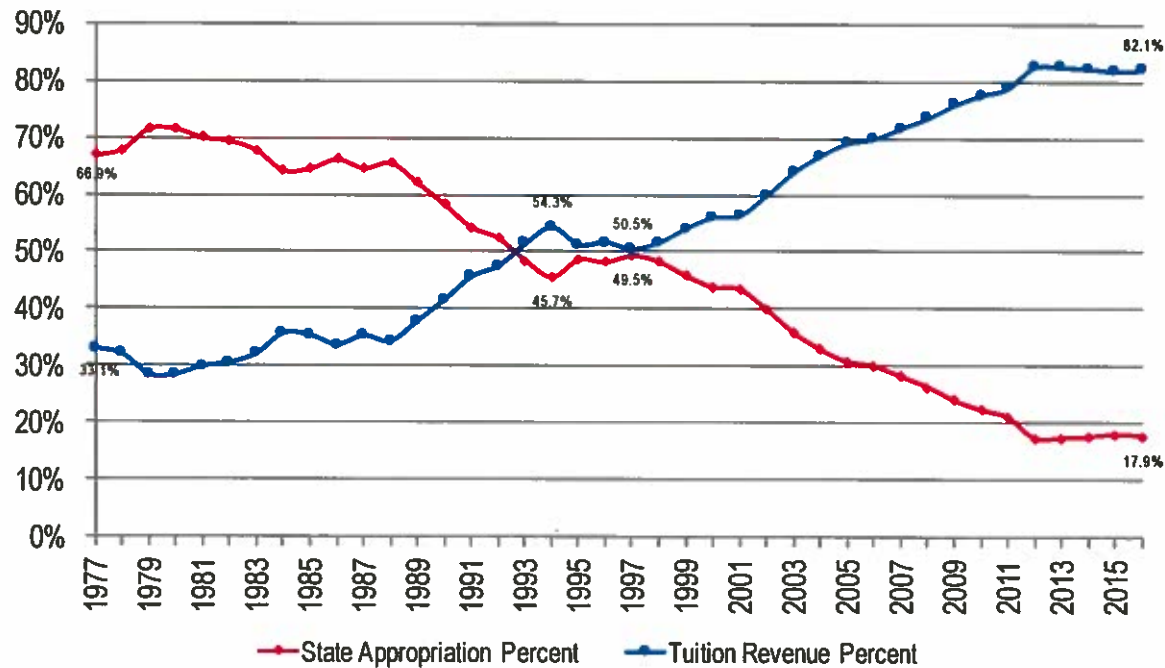


Tuition (2016-2017)	\$11,520
Average Gift Aid	\$4,228
Average Net Cost	\$7,292

Source: Estimate from GVSU Office
of Financial Aid & Scholarship



Ratio of State Aid vs. Tuition at Grand Valley



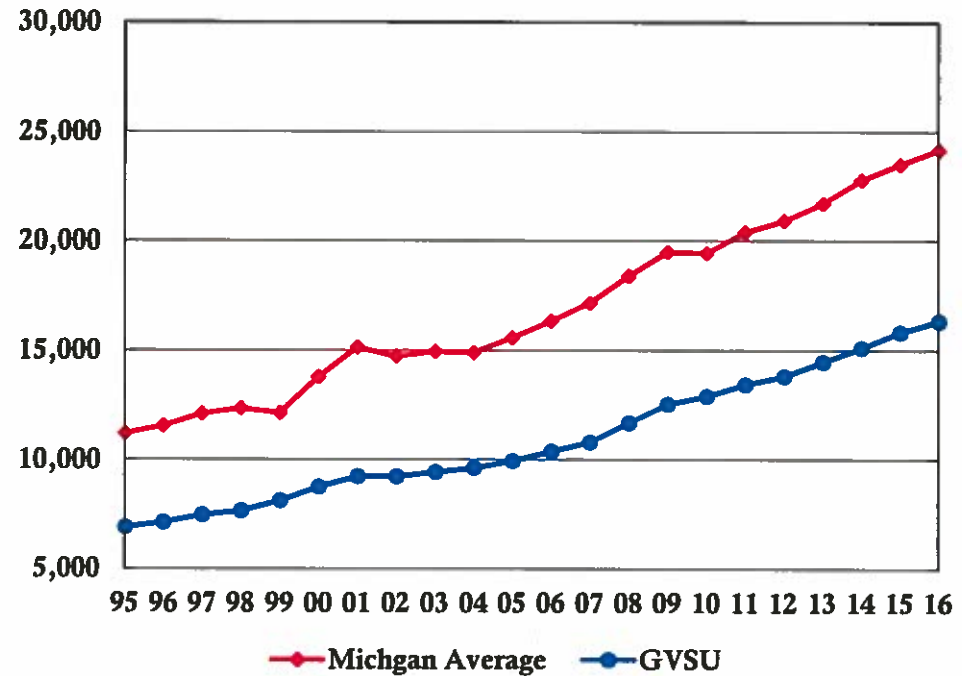
Source: HEIDI - 1977-2016 Actual



Dollar Change in Expenditure per Student

General Fund Expenditures Per FYES

Year	Michigan Average		GVSU	
	Amount	\$ Change	Amount	\$ Change
1995	11,218	589	6,909	701
1996	11,558	340	7,132	223
1997	12,124	566	7,463	332
1998	12,364	240	7,657	194
1999	12,169	(194)	8,132	475
2000	13,806	1,637	8,748	616
2001	15,163	1,356	9,231	483
2002	14,757	(406)	9,229	(2)
2003	14,980	223	9,436	207
2004	14,917	(63)	9,624	188
2005	15,607	691	9,943	319
2006	16,358	751	10,387	444
2007	17,167	809	10,811	424
2008	18,404	1,237	11,702	891
2009	19,495	1,090	12,538	836
2010	19,452	(43)	12,911	373
2011	20,394	942	13,449	538
2012	20,929	535	13,822	373
2013	21,725	796	14,485	663
2014	22,803	1,077	15,123	638
2015	23,513	710	15,836	713
2016	24,190	677	16,350	514
Avg Chg		616		461



Source: HEIDI



The Grand Finish

**Grand Valley students are encouraged to graduate in four years.
Qualifying seniors receive a tuition discount.**

More than 2,500 students received the Grand Finish Grant in 2015-2016. Students who are on track to finish their degree in four years receive up to \$1,000.

Of the 2016 graduates who earned a degree in four years or less, 36% had no debt.



National Rankings and Recognition

TOP PUBLIC REGIONAL UNIVERSITY

U.S News & World Report

BEST IN THE MIDWEST

Princeton Review

ONE OF "AMERICA'S 100 BEST COLLEGE BUYS"

For 21 consecutive years

Institutional Research & Evaluation

VETERAN-FRIENDLY SCHOOL

Gold Rank

Michigan Veterans Affairs Agency

2016 LANDMARK LIBRARY

Mary Idema Pew Library Learning
and Information Commons

Library Journal



Employment and Placement After Graduation



Recent graduates employed or in graduate school	93.8%
Employed in Michigan	84.9%

Source: 2014-2015 GVSU Postgraduate
Employment Report





Economic Impact in Region



\$780 million

Economic impact of GVSU's 28,700 students, faculty and staff in Kent, Ottawa and Muskegon counties in fiscal year 2014-2015

48,373

Alumni in Kent, Ottawa and Muskegon counties

11,418

Total estimated regional employment attributed to GVSU

Source: GVSU- using model provided by
W.E. Upjohn Institute for Employment Research



Appropriation per Student

	2012-13	2013-14	2014-15	2015-16	2016-17
Wayne State	7,396	7,682	8,176	8,455	8,736
Michigan Tech	6,468	6,816	7,485	7,222	7,399
U of M-Ann Arbor	6,492	6,506	6,745	6,844	7,044
Lake Superior	5,028	5,058	5,712	6,075	6,421
Northern	4,747	4,872	5,362	5,617	5,998
Michigan State	5,564	5,579	5,819	5,848	5,979
State Average	4,694	4,776	5,079	5,182	5,345
Western	4,342	4,503	4,898	5,066	5,288
Ferris	3,664	3,735	4,022	4,149	4,307
Eastern	3,551	3,650	3,909	3,953	4,207
Central	3,168	3,267	3,647	3,883	3,944
U of M-Dearborn	3,372	3,375	3,543	3,615	3,681
Saginaw Valley	2,841	2,828	3,059	3,193	3,409
U of M-Flint	2,917	2,962	3,157	3,164	3,266
Grand Valley	2,474	2,588	2,835	2,943	3,040
Oakland	2,773	2,797	2,896	2,831	2,868

Source: HEIDI



