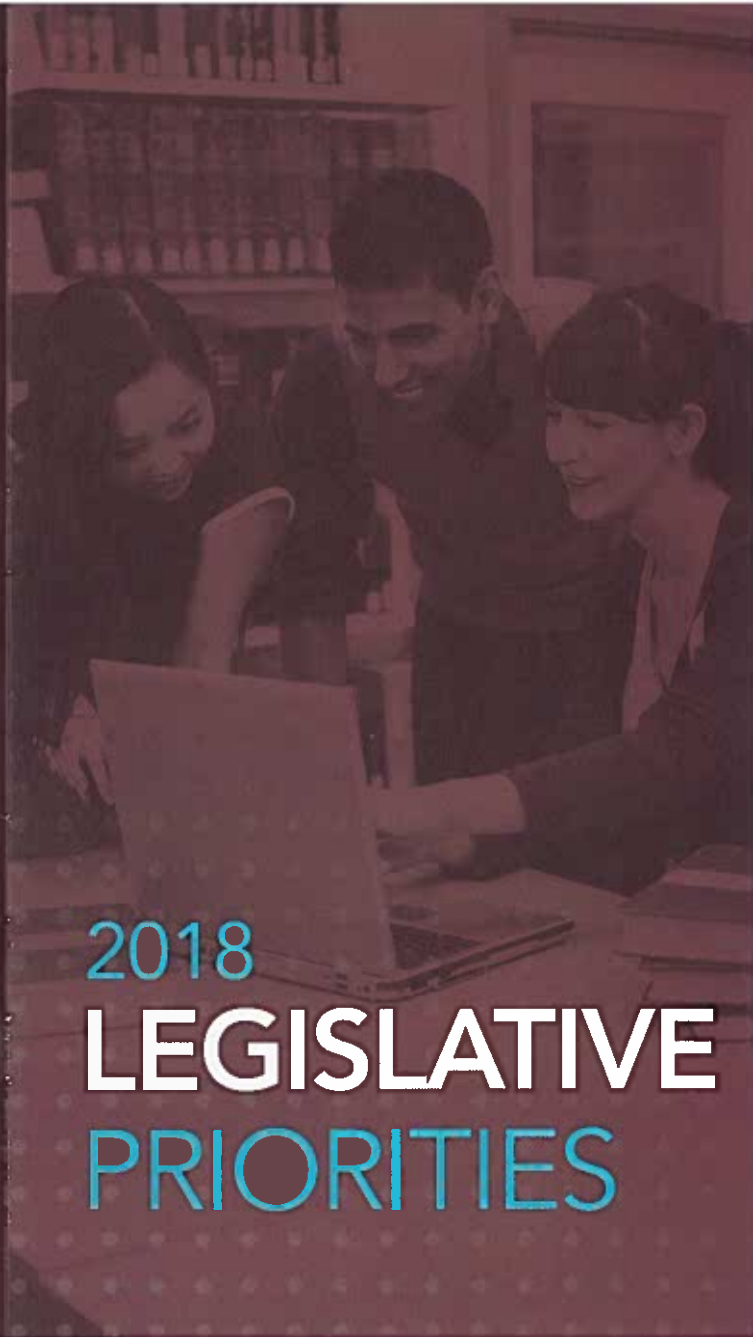


Association of  
serves as  
g board for  
ic universities,  
ocacy and  
to maximize  
value these  
de in serving  
est and the  
chigan.



# 2018 LEGISLATIVE PRIORITIES

**SSOCIATION OF  
NIVERSITIES**

quare, Suite 600  
an 48933



## PRIORITY: ENHANCE STATE OPERATING SUPPORT FOR PUBLIC UNIVERSITIES

- Increase state operating support for Michigan's public universities to maintain college affordability.
- Promote a state higher education funding model that provides sufficient, predictable and sustained public university operating support.

Sufficient, consistent, and sustained state funding for institutional operations mitigates tuition price escalation and keeps college affordable for all students. The primary driver of higher tuition prices over the last several decades has been the state-to-student cost shift that has occurred as a result of state disinvestment in public higher education. In 1979, state funding accounted for 70 percent of Michigan public university operating revenues, with tuition dollars comprising 30 percent. Today, students and families now provide 77 percent of operating dollars.

Modest increases in state operating support for Michigan's 15 public universities since 2013 have helped alleviate increases in tuition prices. However, as of 2018, the state's public universities collectively receive \$158 million less from the state than in 2011, adjusting for inflation. State fiscal support for all postsecondary education in Michigan on a per-capita basis is 28 percent lower than the national average. The long-term trend in state higher education disinvestment is bleaker: a more than one billion dollar reduction in inflation-adjusted state higher education and financial aid funding has occurred since 2002.

## PRIORITY: INCREASE STATE NEED-BASED STUDENT FINANCIAL AID

- Increase state investment in need-based student financial aid programs that promote access for lower-income students.
- Boost, through new investment, the share of state financial aid directed to students attending the state's public postsecondary institutions, which are generally more affordable.

The State of Michigan's primary role in higher education is the allocation of support for its public universities and community colleges in order to mitigate the cost of attendance for all students. Unfortunately, the long term trend of state disinvestment in higher education has resulted in many families confronting unmet financial need at public institutions. Income-targeted state grant programs are important tools in addressing the gap between family resources and public college costs.

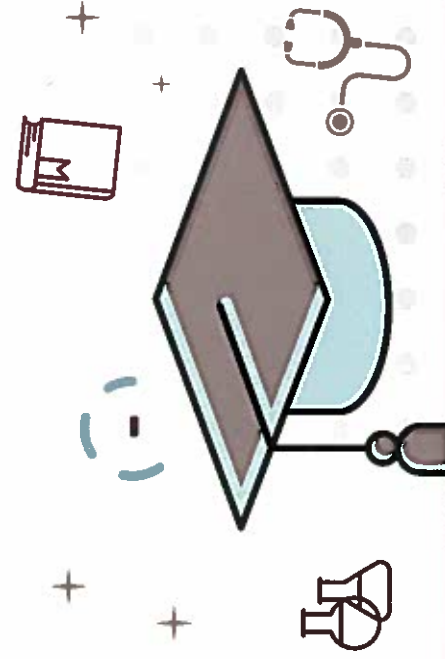
Regrettably, despite tremendous investments by the public universities in the provision of institutional need-based grants, steep cuts made to Michigan's financial aid programs have diminished the ability of lower-income families to afford a college education. State financial aid appropriations peaked in 2002 at \$262 million and are less than half of that today. Adjusting for inflation, this is a 65 percent reduction. Michigan ranked 39th in the nation in 2016 for grant aid per student at a paltry \$266. Still more challenging, only about 29 percent of award funds from the last two remaining general purpose state financial aid programs are provided to students attending public universities and community colleges, compared to a national average of 76 percent.

## PRIORITY: INVEST IN STATE CAPITAL OUTLAY FOR MICHIGAN'S PUBLIC UNIVERSITIES

- Support a state capital outlay process that is conducted annually, is consistent and predictable, and provides the public investment needed to ensure continued world-class academics and applied research at Michigan's public universities.
- Reinstitute state payments for infrastructure, technology, equipment, and maintenance at public university facilities, helping these institutions lengthen the lifespan of the state's investment for many more years.

High-quality academic and research facilities are vital to ensuring that Michigan's public universities remain competitive. Constructing technologically- and environmentally-sophisticated campus facilities requires a financing partnership between the state and its public universities. Although only two university projects were authorized between 2010 and 2015, the state has resumed investing in capital outlay in recent budgets by authorizing projects at a majority of the state universities. This is a commendable turnaround, and we encourage the state to continue its recent trend of providing capital outlay investment in its public universities.

Also important is the need for state investment in existing infrastructure on public university campuses in order to maximize the lifespan of these important state assets. The state has not provided infrastructure, technology, equipment, and maintenance (ITEM) grants since 2000, shifting one more cost burden from the state to the universities. Ultimately, a portion of students' tuition dollars end up paying for critical campus asset preservation needs; monies that would be better utilized for direct instruction.



# Improve COLLEGE AFFORDABILITY & STUDENT SUCCESS