

Michigan Demographic Trends

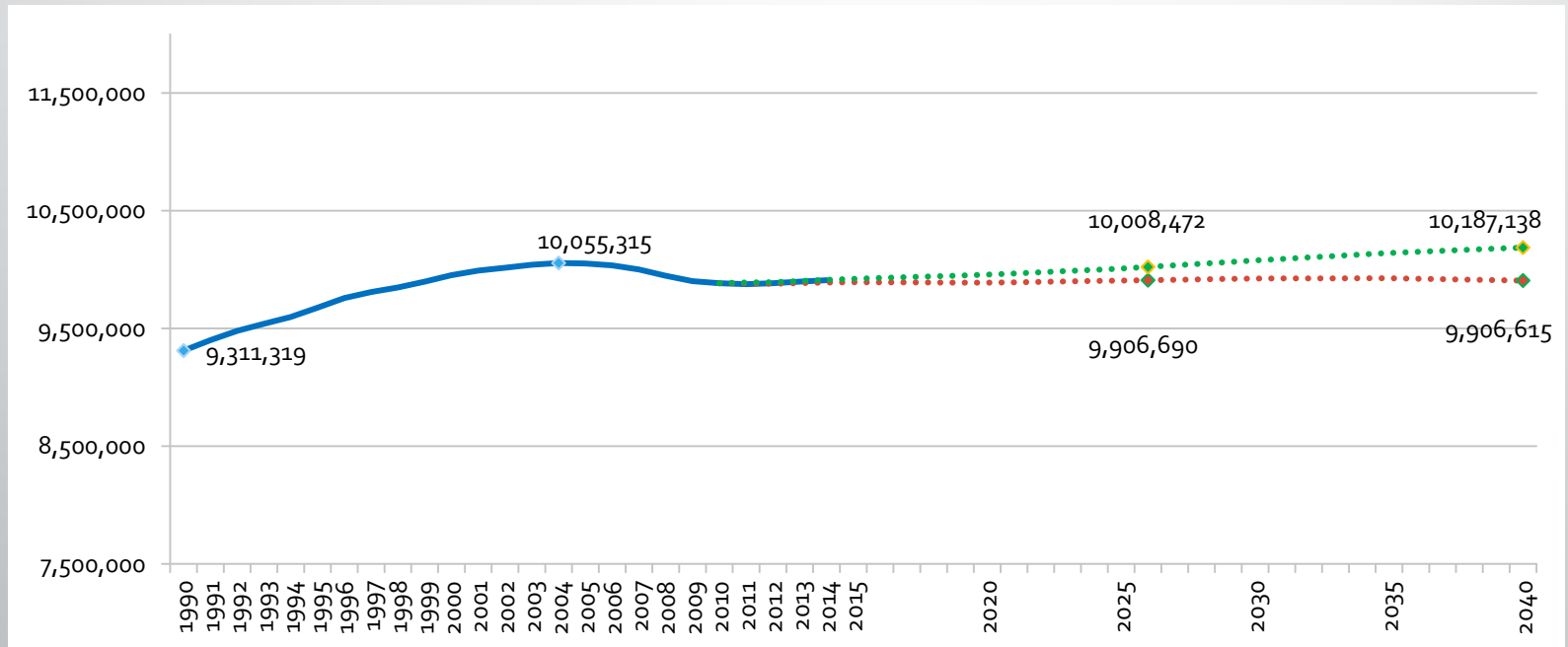
Eric Guthrie
State Demographer

Revenue Consensus Estimating Conference

May 15, 2015

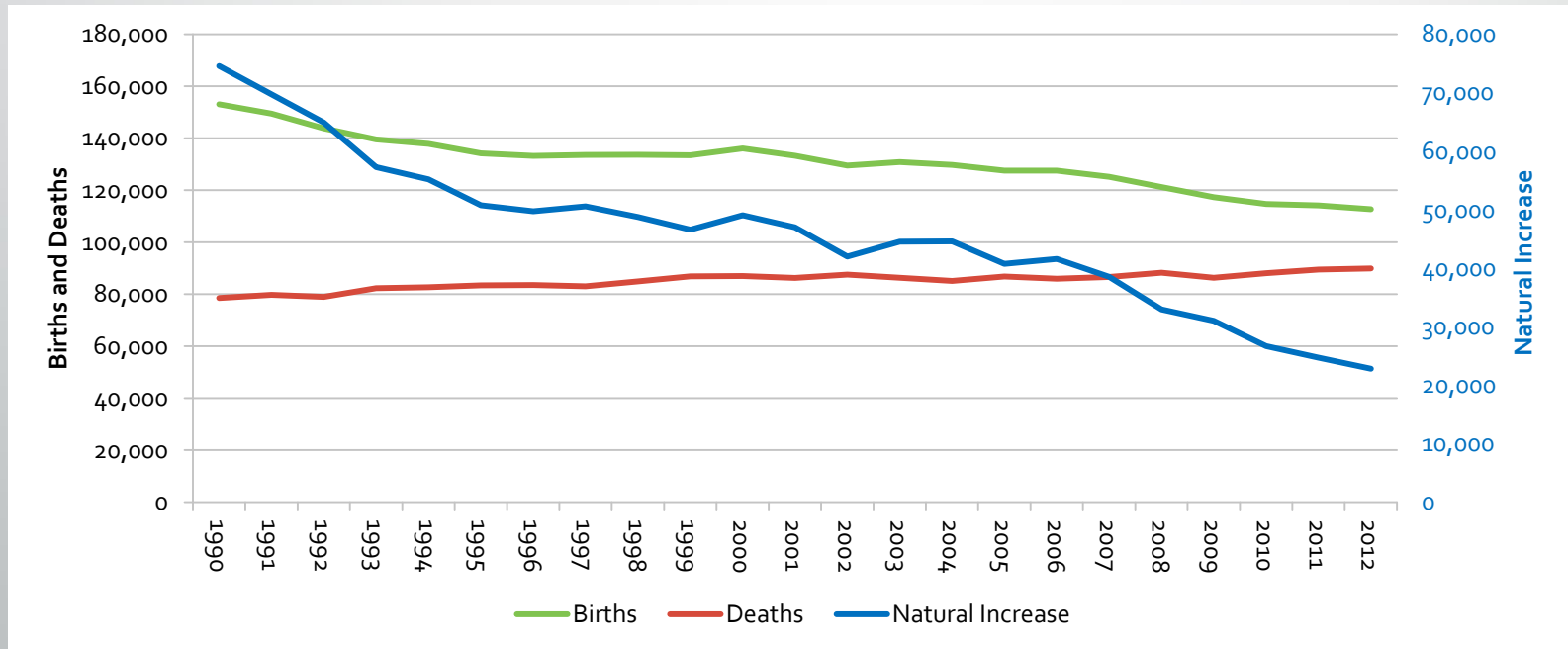


Population Trends



Source: U.S. Census Bureau, 2000 and 2010 intercensal estimates and vintage 2014 population estimates, MDOT Population Projections and unpublished population projections

Births Are Declining Which is Bringing Down the Natural Increase



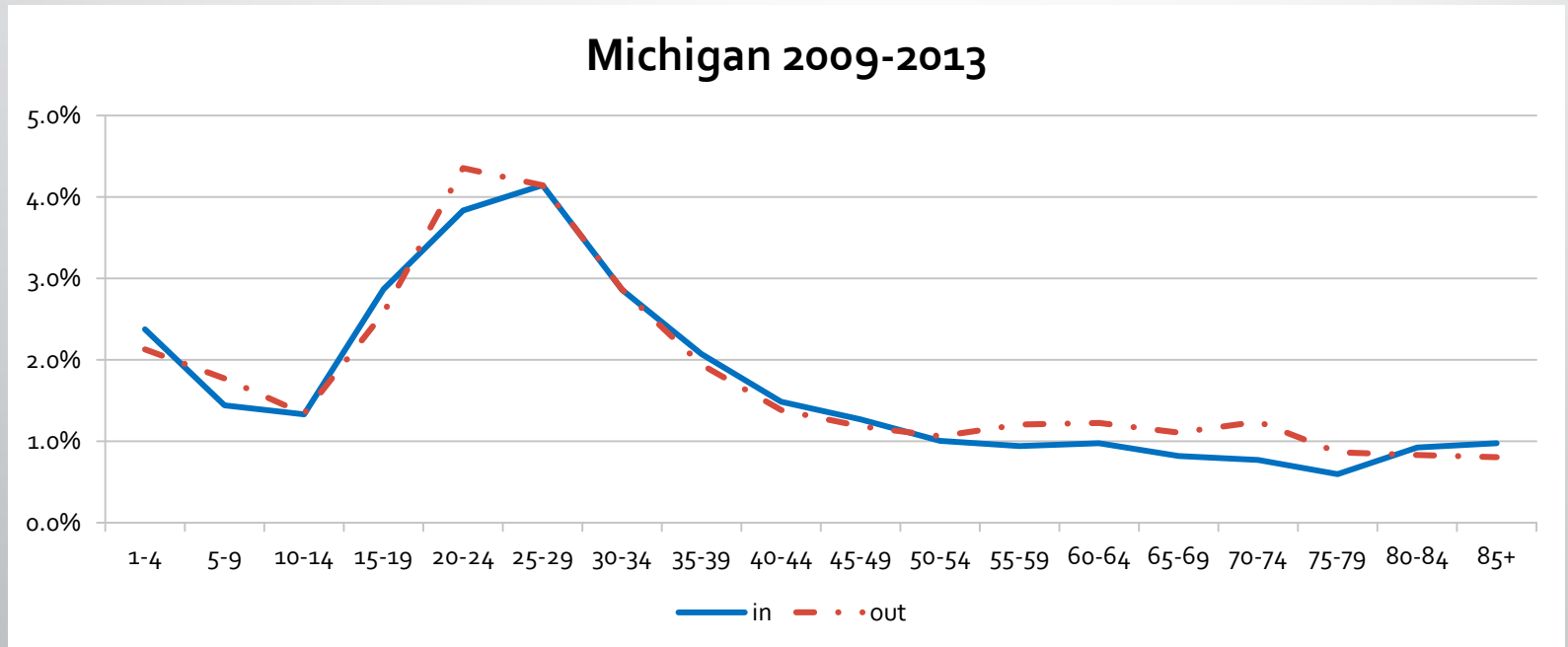


Total Fertility Rates

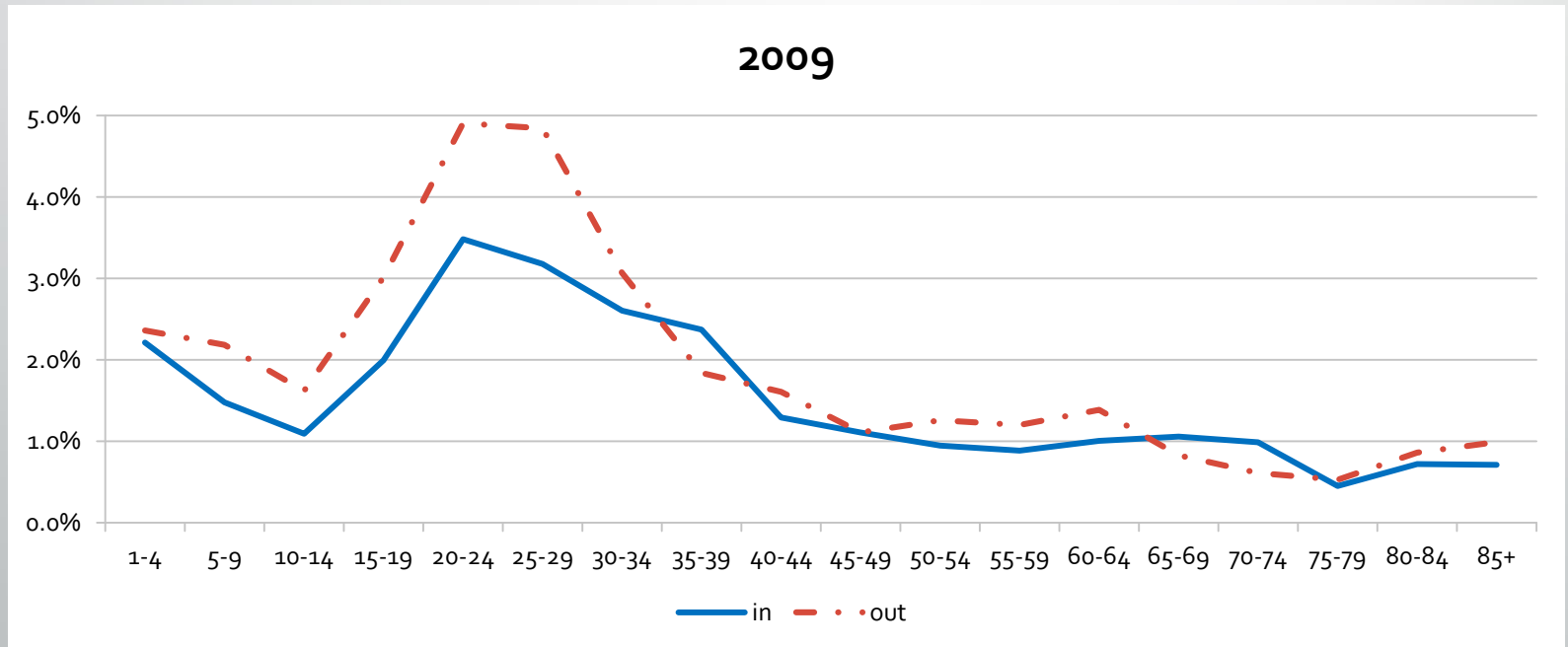
Michigan 1.853

U.S. 1.931

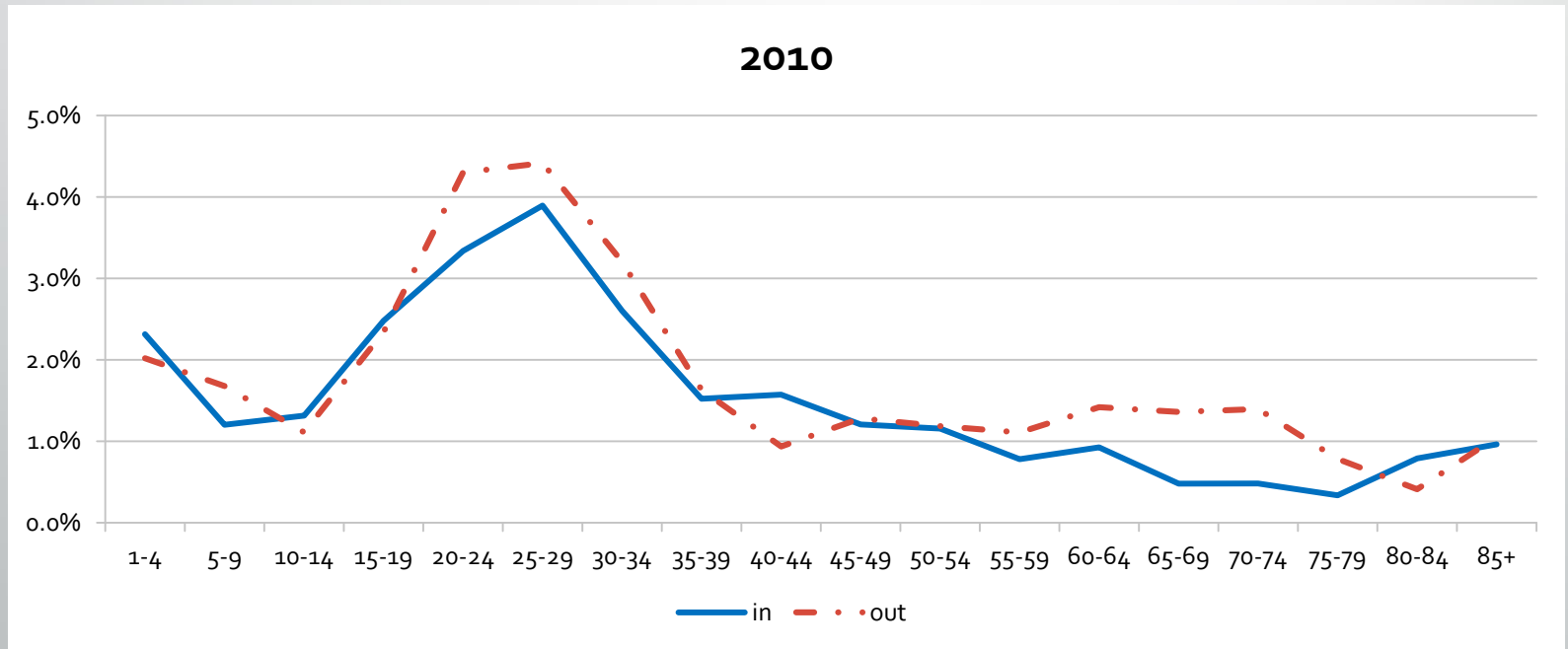
Migration



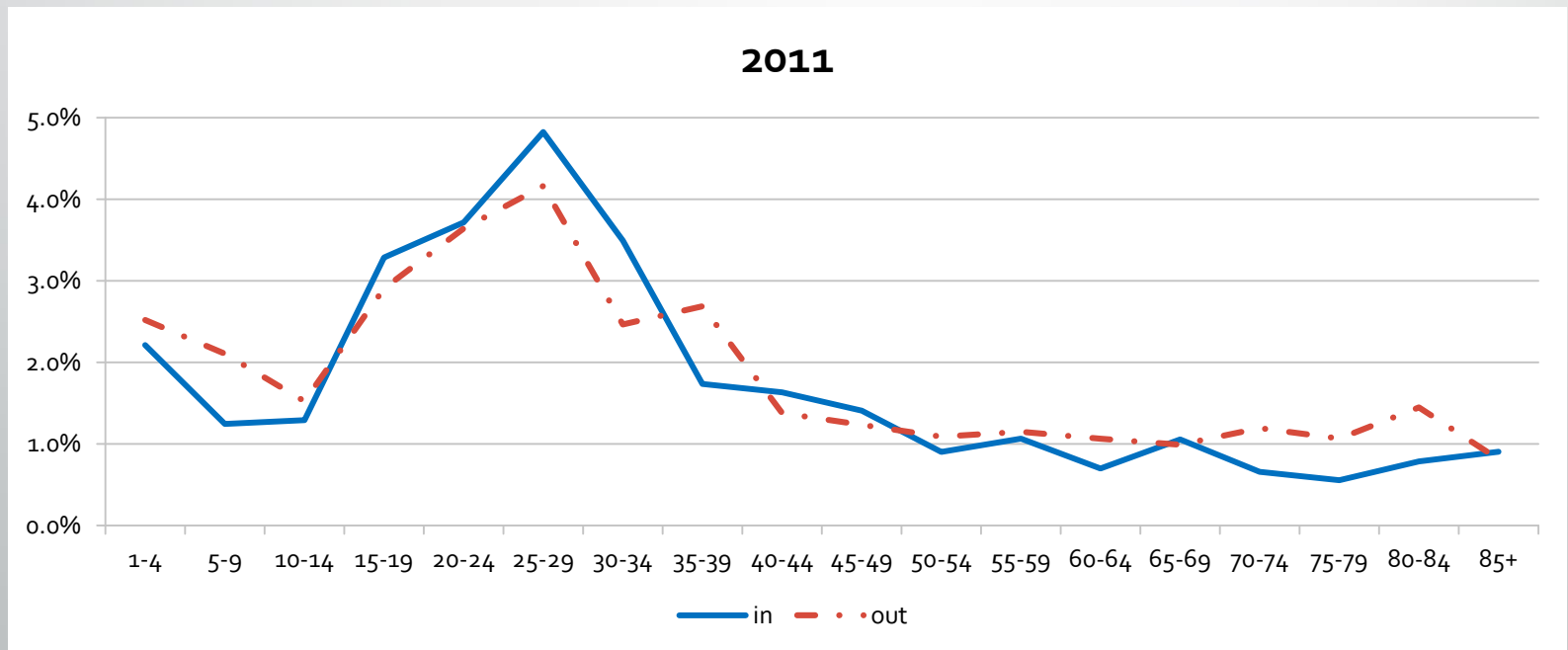
Migration



Migration

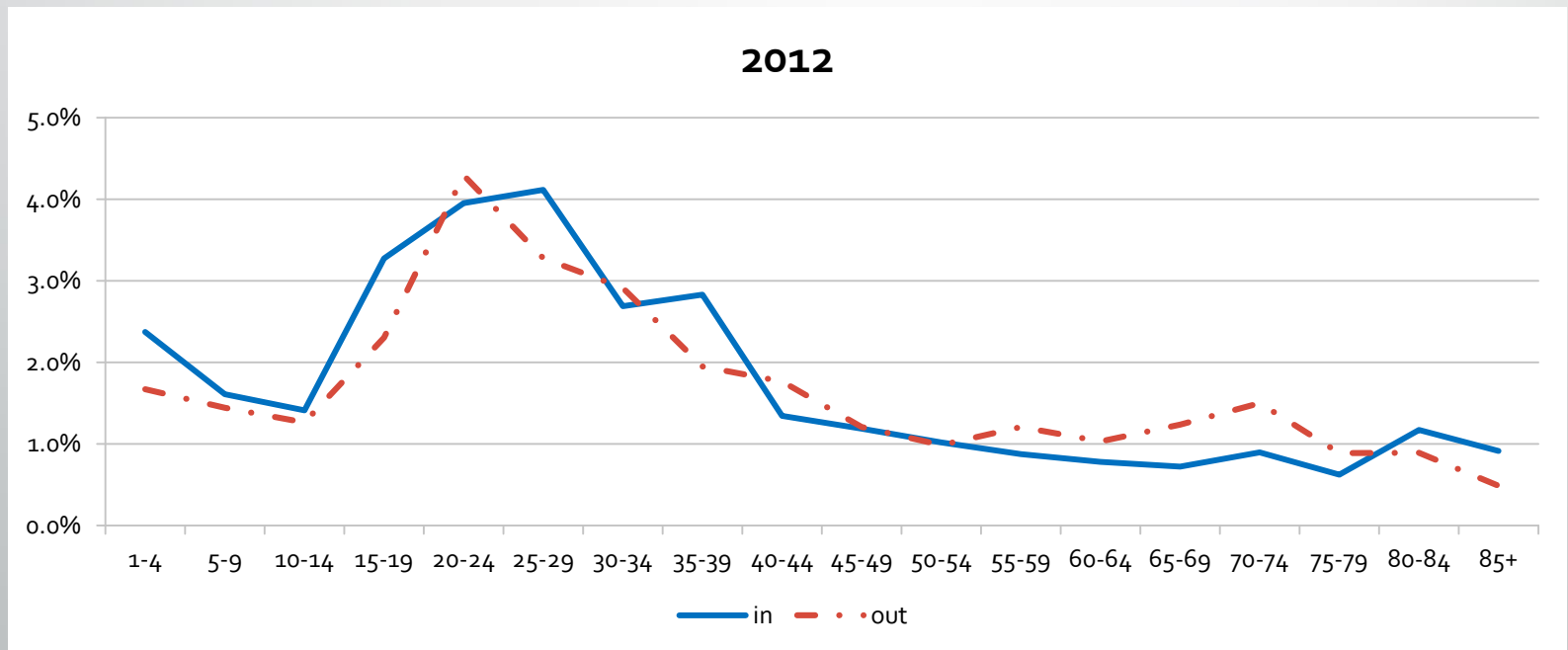


Migration



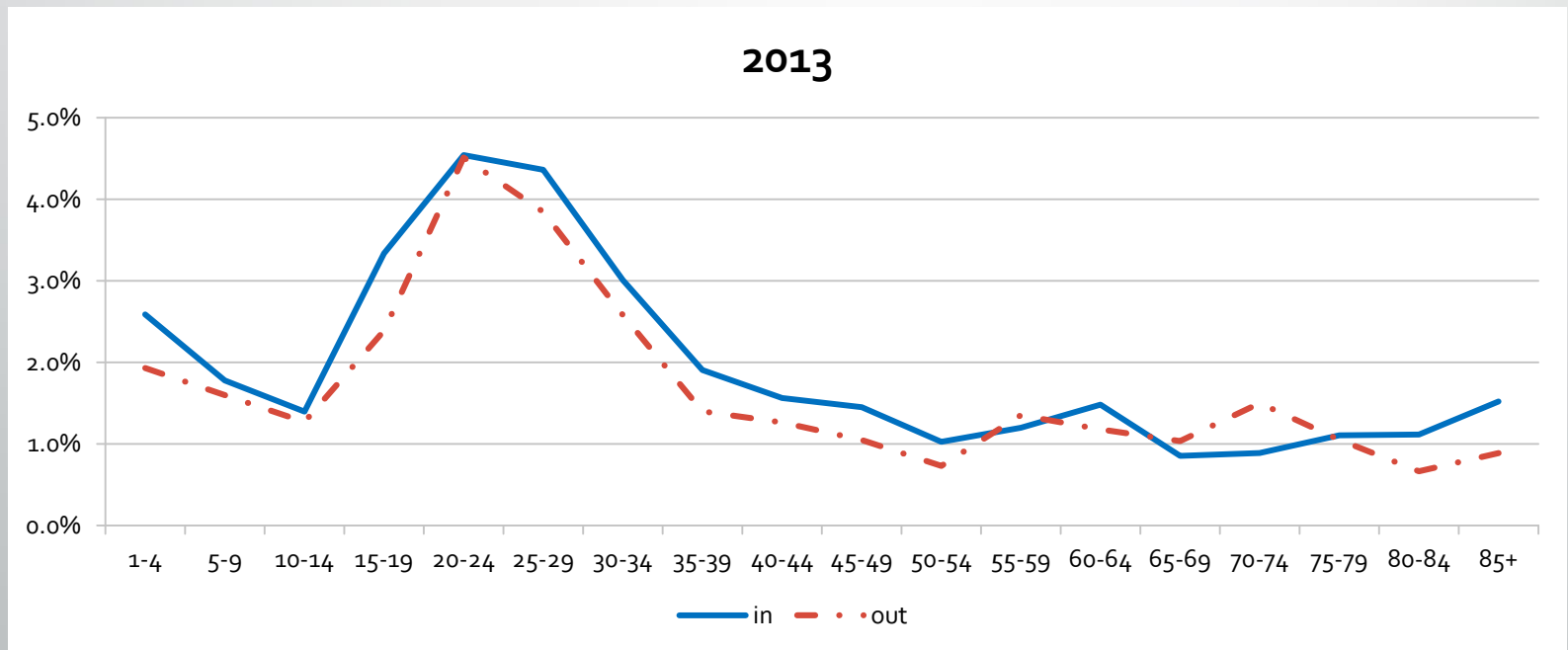
Source: 2011 ACS 1-year PUMS

Migration



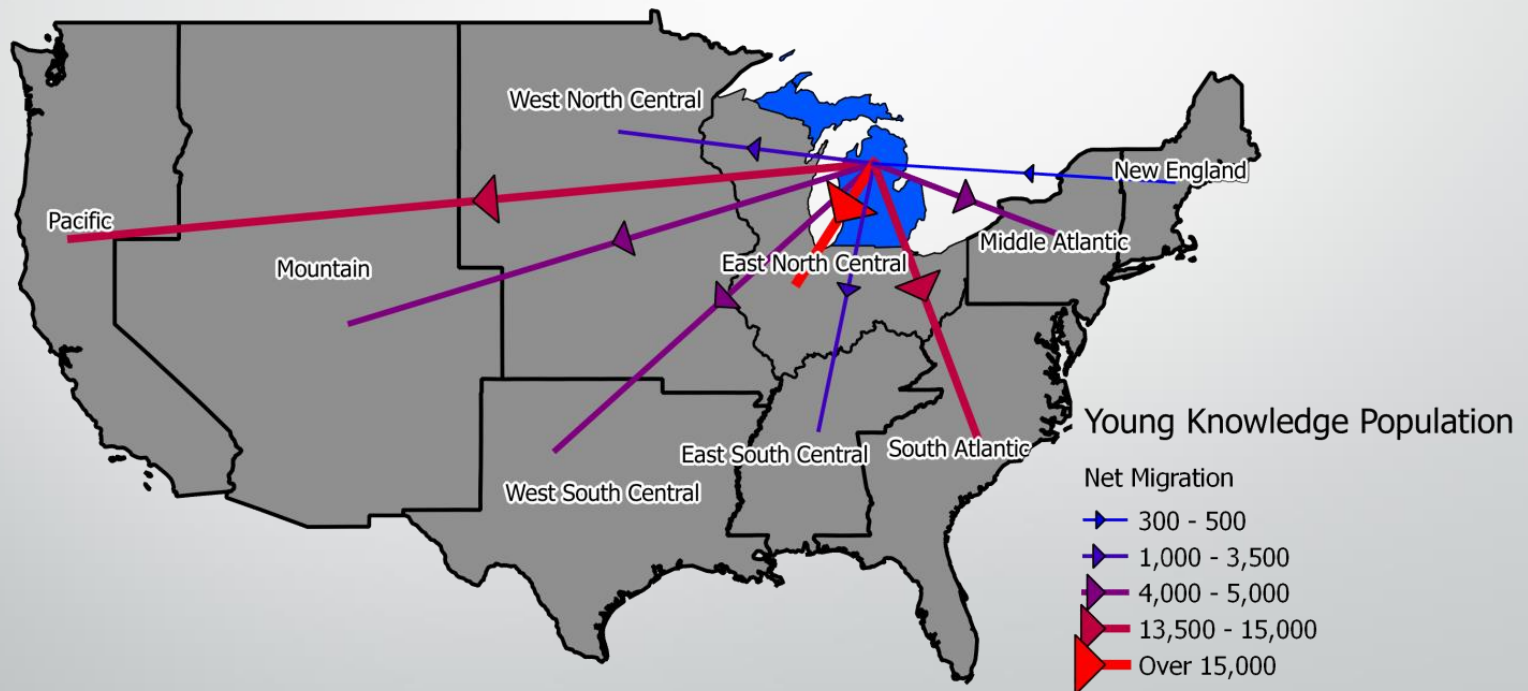
Source: 2012 ACS 1-year PUMS

Migration

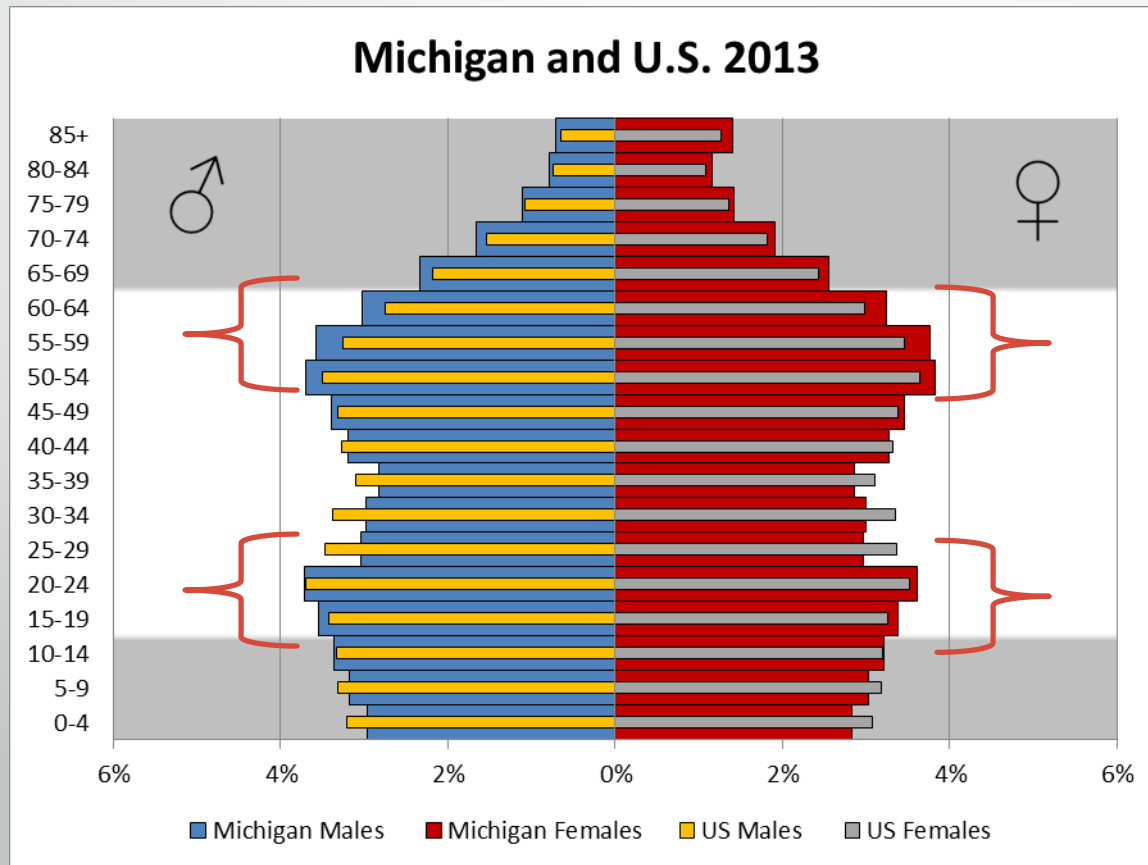


Source: 2013 ACS 1-year PUMS

Migration of Young Knowledge Population 2009-2013



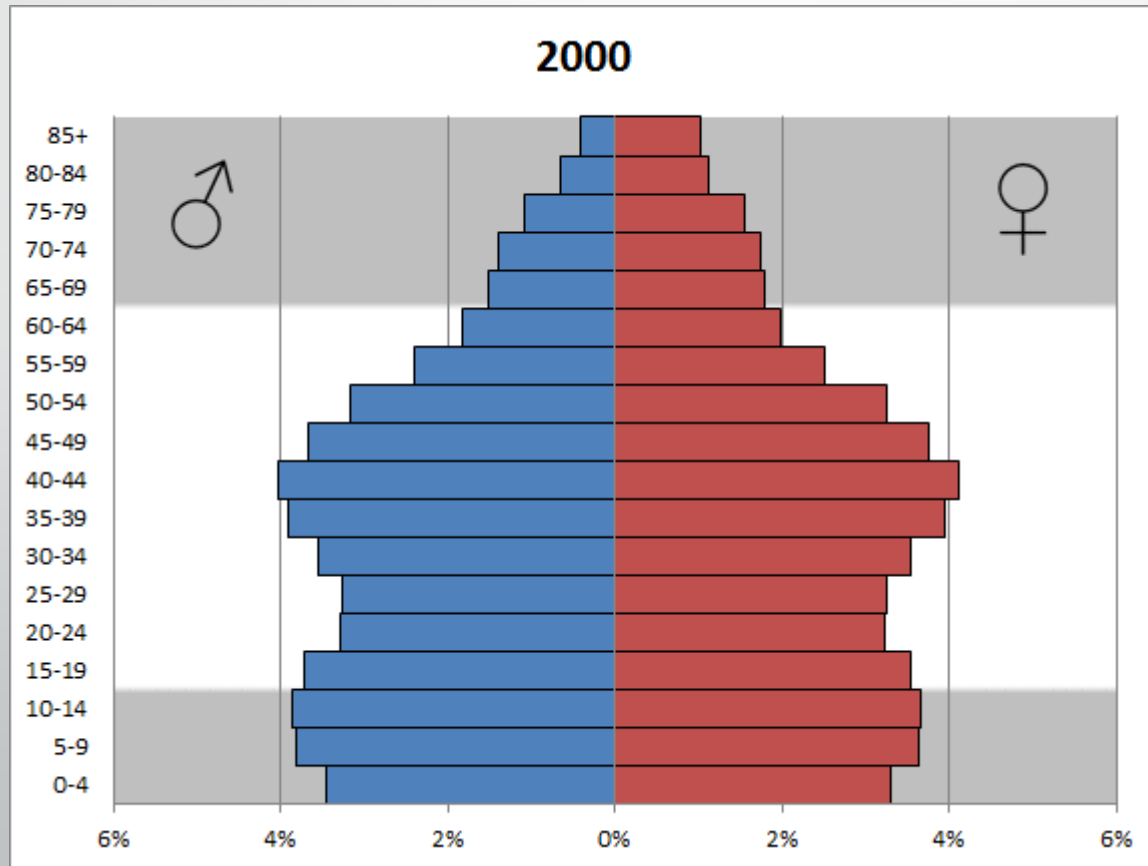
Generational Change and the Population Structure



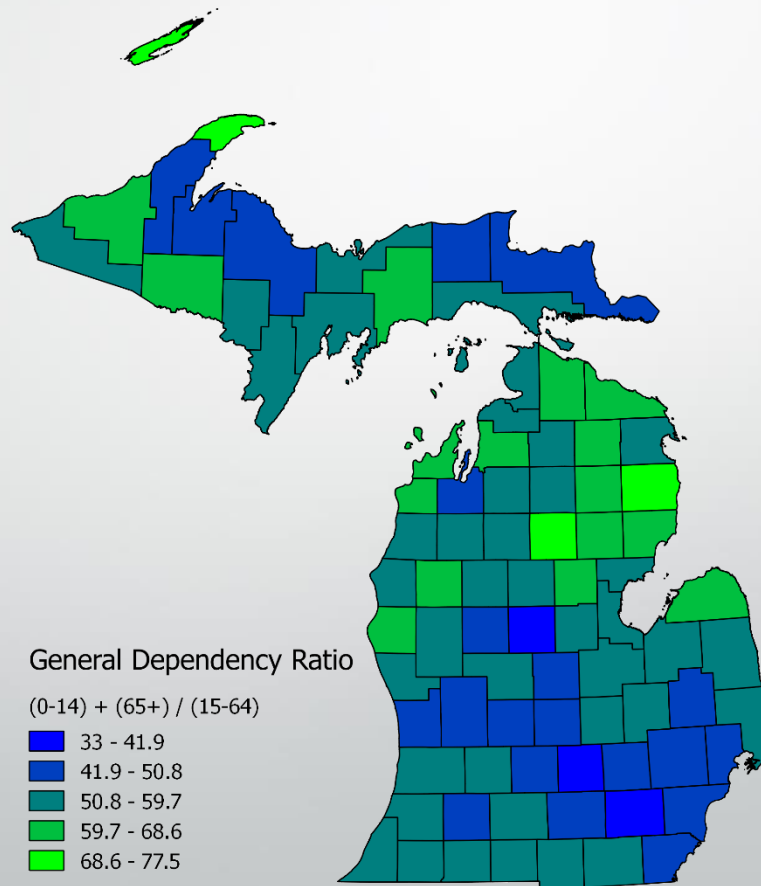
21% in MI
20% in U.S.

26% in MI and
27% in the U.S.

Generational Change and the Population Structure



Some Counties Have As Many As 7 Young and Old Persons for Every 10 in the 15-64 Group



Conclusions

- The Baby Boomers have begun to move into the retirement years and will continue to do so over the next decade
- The Millennial generation is moving into their productive years and it is the next big generation
- We need to be doing all we can to make Michigan an attractive place to move to instead of one to move from so that the population increases that are being projected will be realized

Questions?

Eric Guthrie

State Demographer

guthrie@michigan.gov

517-241-8667