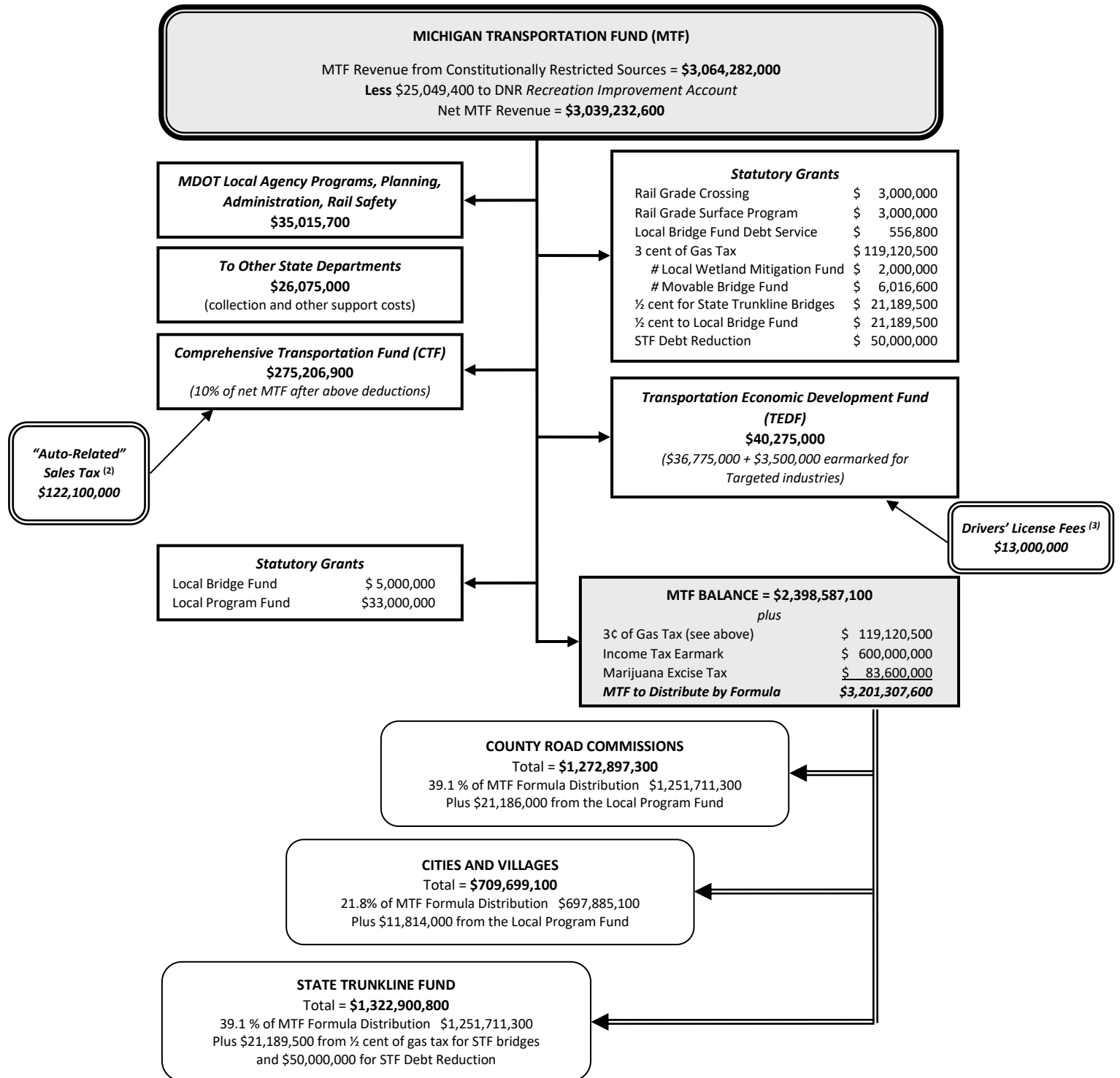


FY 2023-24 MICHIGAN TRANSPORTATION FUND REVENUES AND DISTRIBUTIONS PER Sec. 10, 1951 PA 51⁽¹⁾

February 2023 ORTA Estimate



Notes:

(1) This flowchart represents the distribution of MTF revenue derived from constitutionally restricted motor fuel and vehicle registration taxes as directed by Section 10 of Public Act 51 of 1951, as well as statutory earmarks of income tax revenue (Section 51d of the Income Tax Act) and marijuana excise tax revenue (Section 14, Initiated Law 1 of 2018). These two statutory earmarks are shown as additions to the MTF balance for formula distribution to road agencies. The MTF formula distribution to road agencies totals \$100 more than the "MTF to Distribute by Formula" figure due to rounding. The MTF appropriation for county road commissions, and cities and villages in the enacted budget, are \$58,600, and \$32,800, respectively, more than the calculated figures shown above.

(2) In addition to an earmark of MTF revenue, the CTF also receives an earmark of sales tax attributable to "auto-related" sales.

(3) Section 819 of the Michigan Vehicle Code earmarks a portion of drivers' license fee revenue to the TEDF.