



Michigan can lead

Presentation to the 2019 MI House Appropriations Transportation Subcommittee

Victor Li

James R. Rice Distinguished University Professor of Engineering,
E.B. Wylie Collegiate Professor of Civil and Environmental Engineering
University of Michigan

April 25th 2019

Bad road hurts





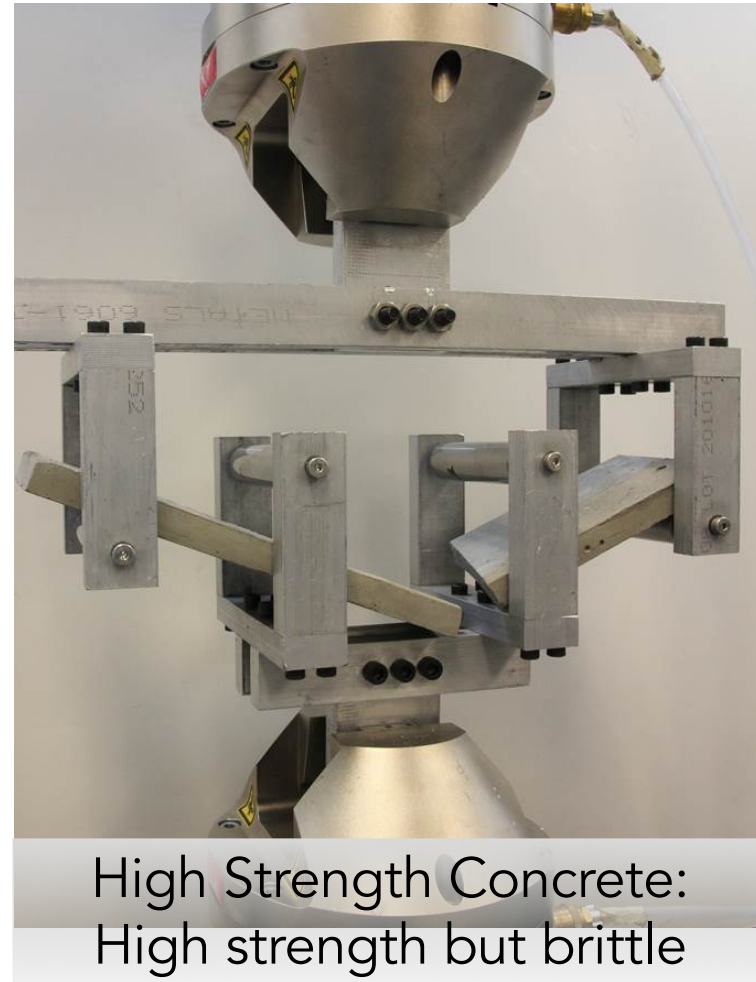
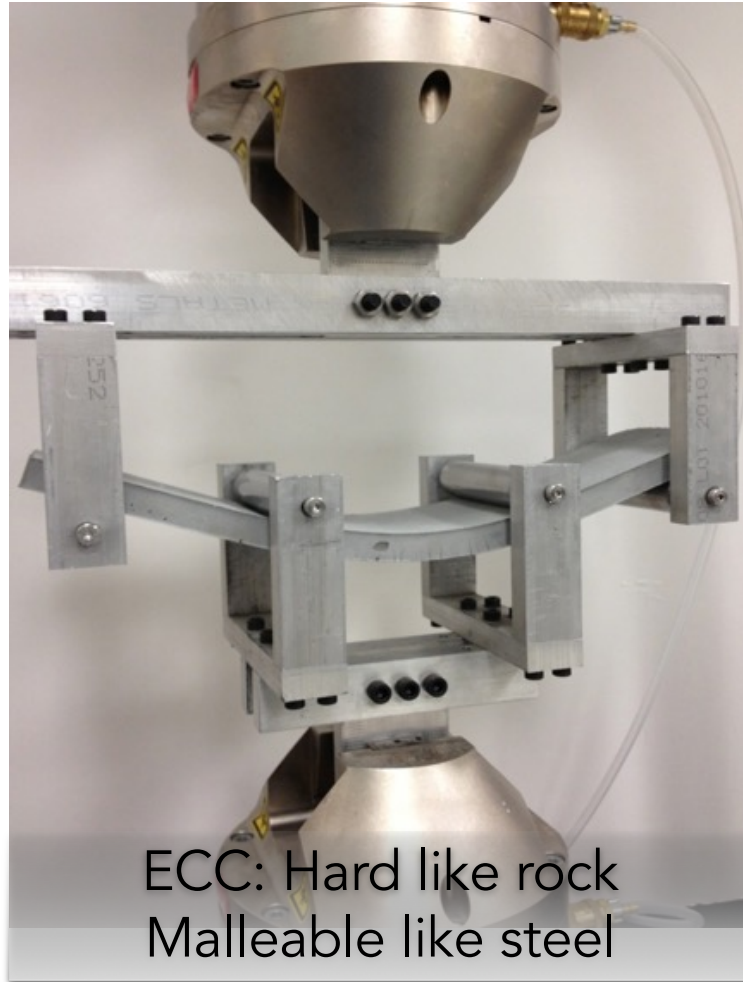
Cracks, cracks, cracks

Tai Chi and abalone defense not by hard blocking, but by the ability to “give”

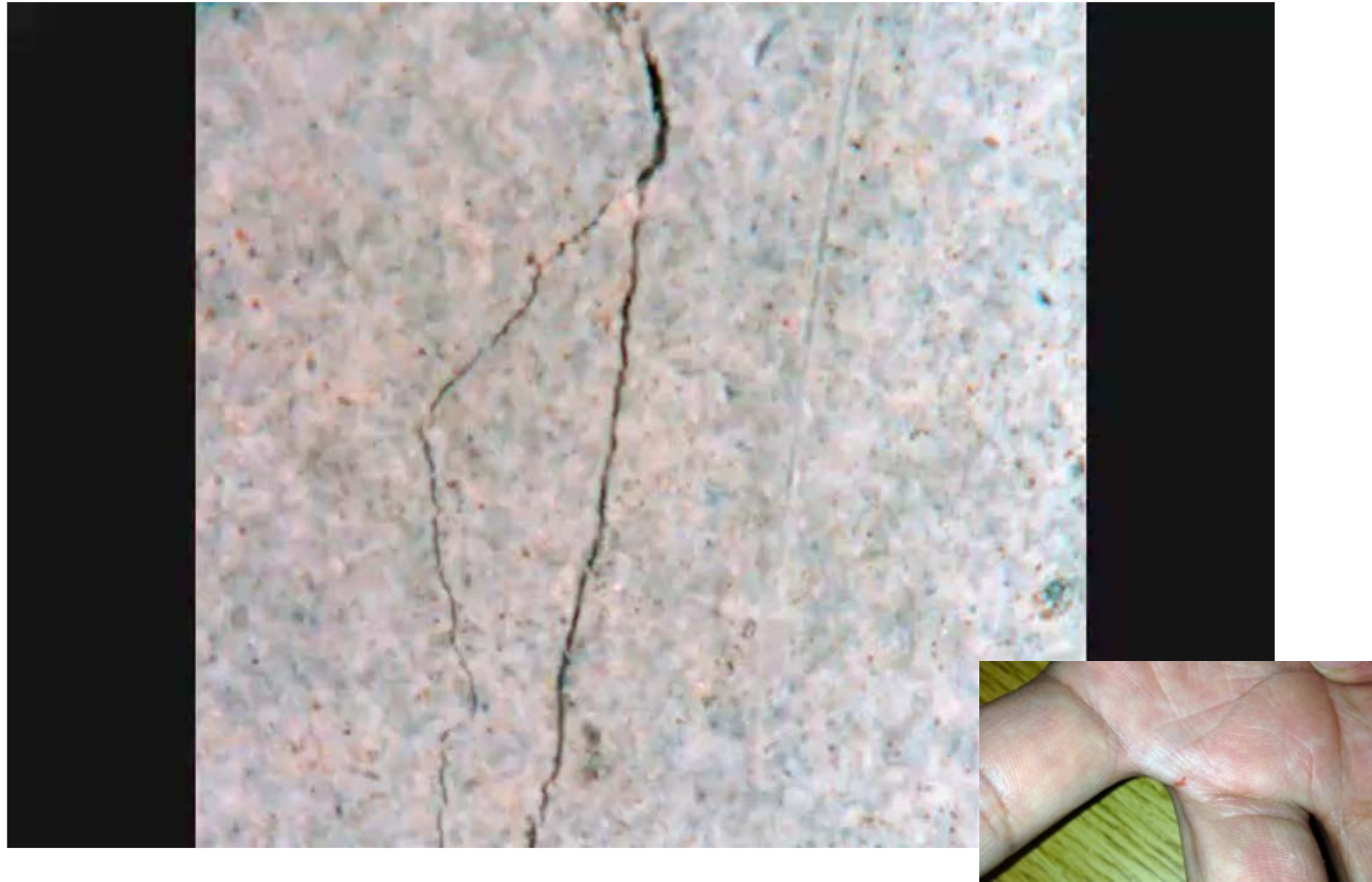


Bendable concrete (ECC) has the “give”

Invented in Michigan



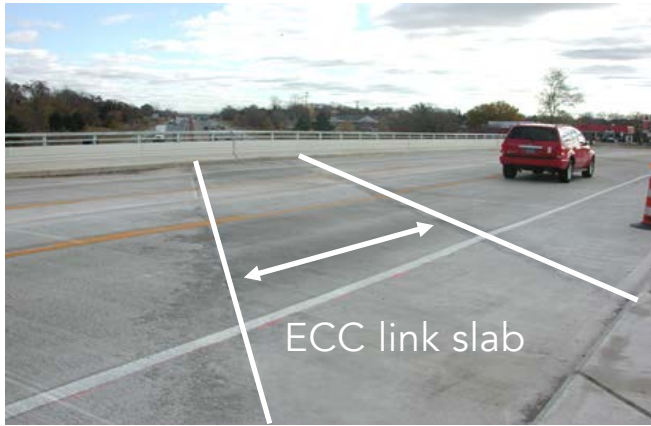
ECC self-heals when damaged ...



ECC has been used in full scale demanding applications



ECC reduces bridge deck maintenance



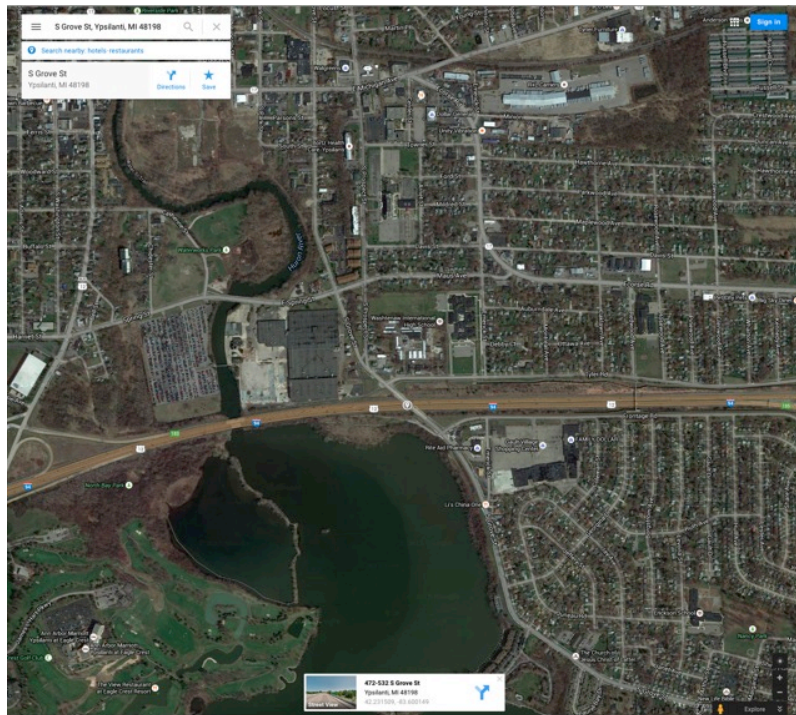
225 mm x 5.5 m x 20 m



MDOT-UM Collaboration

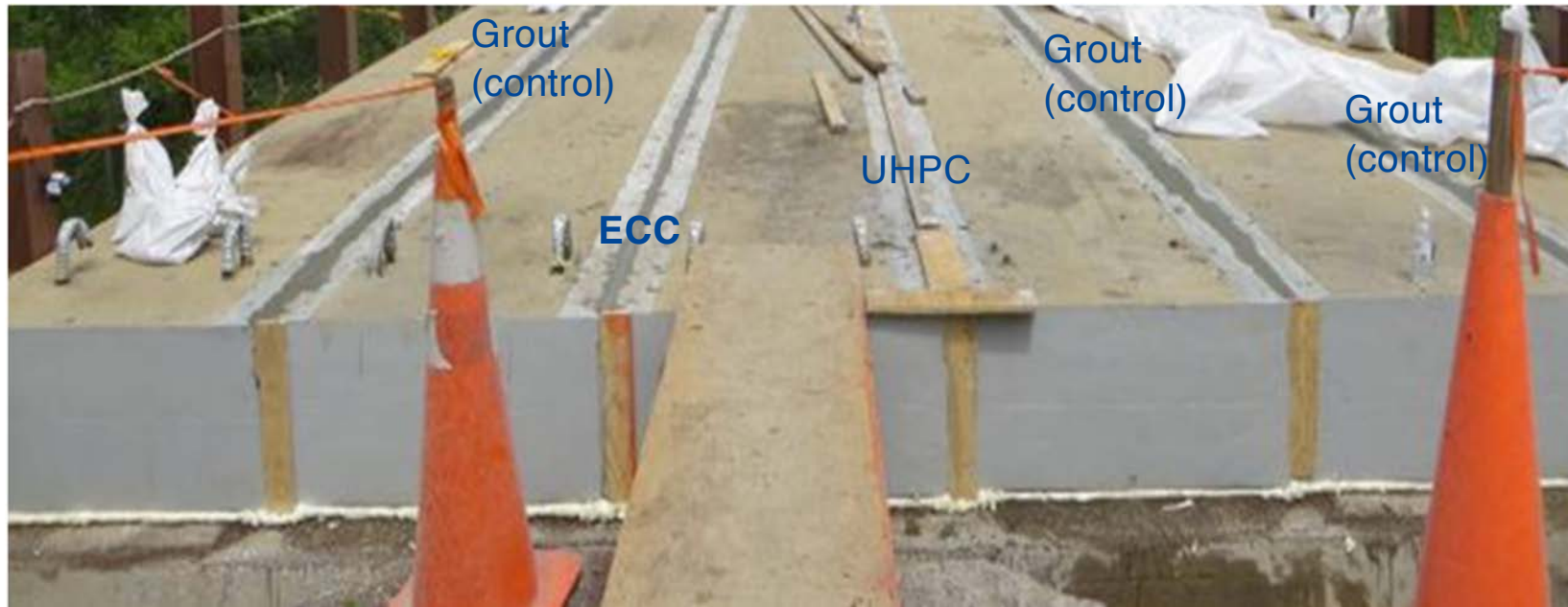
ECC link slab replaces high maintenance expansion joint (2005) on Grove Street Bridge, Ypsilanti, MI

Proven durability



(Google Map, July 2015)

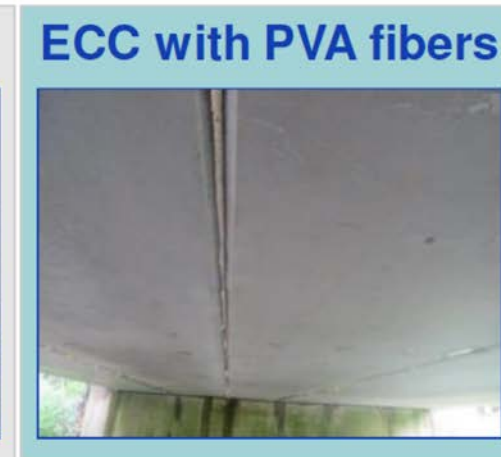
VDOT experience: Shear keys to transfer loads between adjacent box beams



Typical problems: Issue is cracking, deicing salt leak, corrosion in prestressing strands, grout deterioration, limit shear transfer. Contractor: ECC cost = Non-shrink grout cost
Also use in closure pours and culvert repairs.

VDOT SP217-000110-00

VDOT finding: ECC is only material that did not leak



After 3 months, only ECC did not leak

Continue to perform well after 1 year 

Fracture of pavement leads to potholes

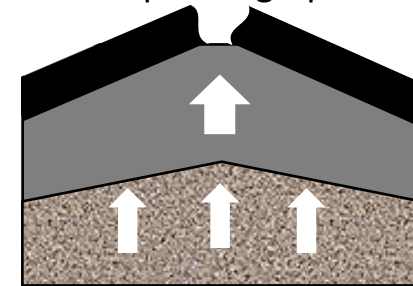
1. Water

Penetrate through
large crack



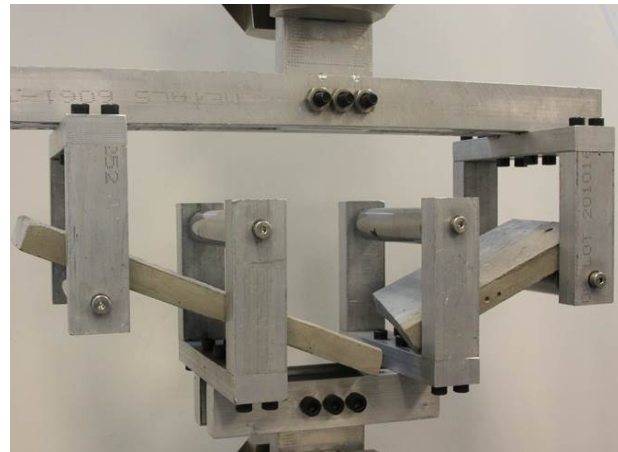
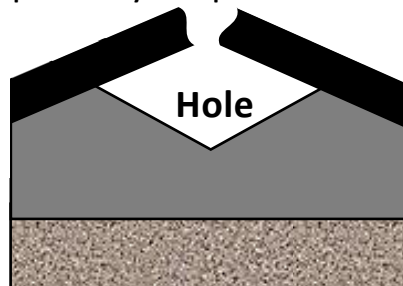
2. Freezing

Ground pushing up



3. Thawing

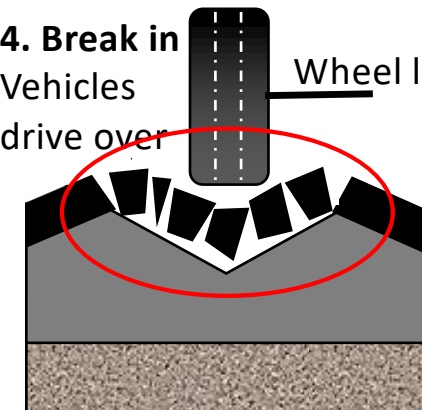
Ground returns, pavement
partially suspended



Concrete and
asphalt (in winter)
is **brittle**

4. Break in

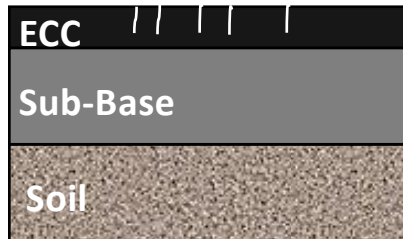
Vehicles
drive over



Bendable ECC resists pothole formation

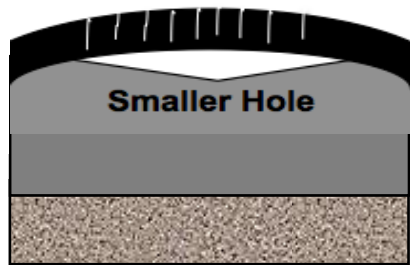
1. Water

Hardly penetrate through
fine cracks



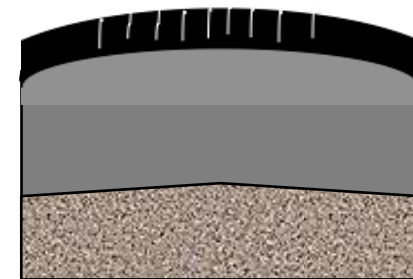
3. Thawing

Less water trapped, causes
smaller hole



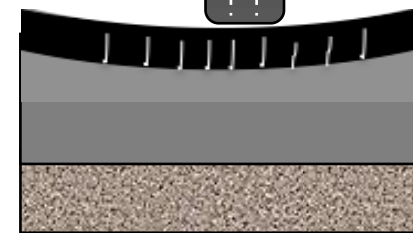
2. Freezing

Ground pushing up, multiple fine
cracking on surface



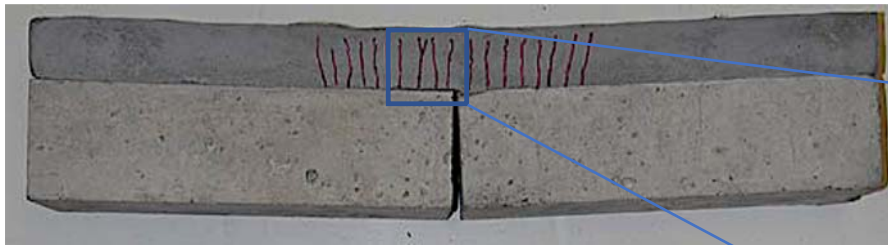
4. Bend back

Vehicles
drive over  Wheel load

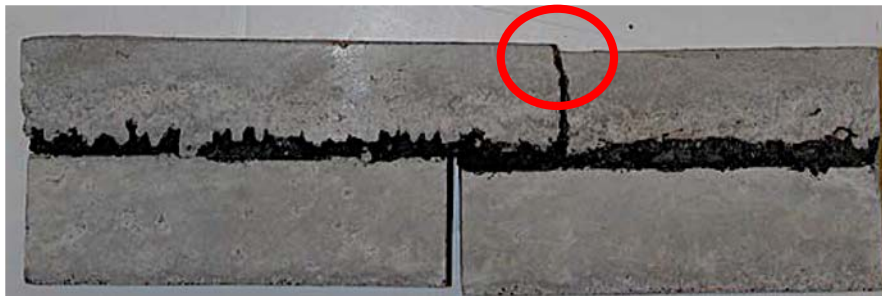


ECC is **Ductile**

ECC overlay doubles service life with less than half the concrete overlay thickness



Thin ECC overlay



Thick concrete overlay with asphalt interlayer



Major life-cycle-cost reduction with ECC overlay

Table 2 Comparison of life cycle cost for different overlay systems

	Concrete overlay	ECC overlay	HMA overlay	ECC OL cost advantage over Concrete OL	ECC OL cost advantage over HMA OL
Agency cost	\$10.1	\$6.22	\$14.8	38.4%	58.0%
User cost	\$61.9	\$37.4	\$84.2	39.6%	55.6%
Environment cost	\$0.9	\$0.7	\$1.11	22.2%	36.9%
Total cost	\$72.9	\$44.3	\$100	39.2%	55.7%

(Note all units of cost are in millions)

Challenges ahead

- Risk perception inherent in innovations
 - Tests in lab and in field
- Cost
 - Higher cost compare to standard concrete (on per cyd basis)
 - Smart engineering reduces cost / mile of road
 - Long-term savings on O&M
- Training
 - Most current engineers not properly trained in ductile concrete
 - Universities and community college can help
- Collaboration
 - Government, universities, and private section
 - Supply chain lacking
 - Include in MDOT approved materials list
 - Demonstration projects to further reduce risk

Michigan talents

- University of Michigan
 - Advanced pavement materials
- Michigan State University
 - Great pavement testbed
- Wayne State University
 - Pavement durability assessment



Good roads, and green too!

- ECC as pothole killer
- Greening MI roads
 - Pavement that locks up CO₂
 - Mitigate climate change
- Turn a major challenge into an opportunity to lead other states
- Recommendation: Convene stakeholders to look at the technical, financial, risk, social aspects of road innovations
- Michigan **will** lead



IM