

# **Meijer Automated Distribution**

**December 15, 2020**

**House Government Operations Committee**

© Copyright 1996-2019 Meijer, Inc. Confidential and proprietary.

**meijer**

## Meijer Overview

- Meijer is a Grand Rapids, MI based retailer that operates over 250 supercenters and grocery stores in 6 states across the Midwest (119 supercenters in Michigan).
  - Each Meijer supercenter employs 200-300 team members.
  - Each Meijer supercenter represents \$30 million worth of direct and indirect investment in local communities.
- Employs nearly 80,000 Team Members across footprint.
- Meijer employs nearly 40,000 Team Members in Michigan.
- Meijer has been privately-owned and family-operated since 1934.
- Meijer donates more than 6% of its net profit to community organizations and charities each year.



# Who pays Michigan's PPT?

## SUBJECT TO PPT



**meijer**  
Stores



**meijer**  
Manufacturing &  
Distribution Centers



**meijer**  
Corporate Offices

## EXEMPT FROM PPT



**Eligible Industrial &  
Manufacturing Personal  
Property (EMPP)**

### Local & Regional Economic Development Tools

- Industrial Facilities Exemption
  - Renaissance Zones
  - Aerropolis



# Meijer Distribution Timeline



Grand Rapids, MI



Lansing, MI



Newport, MI



Tipp City, OH



Middlebury, IN

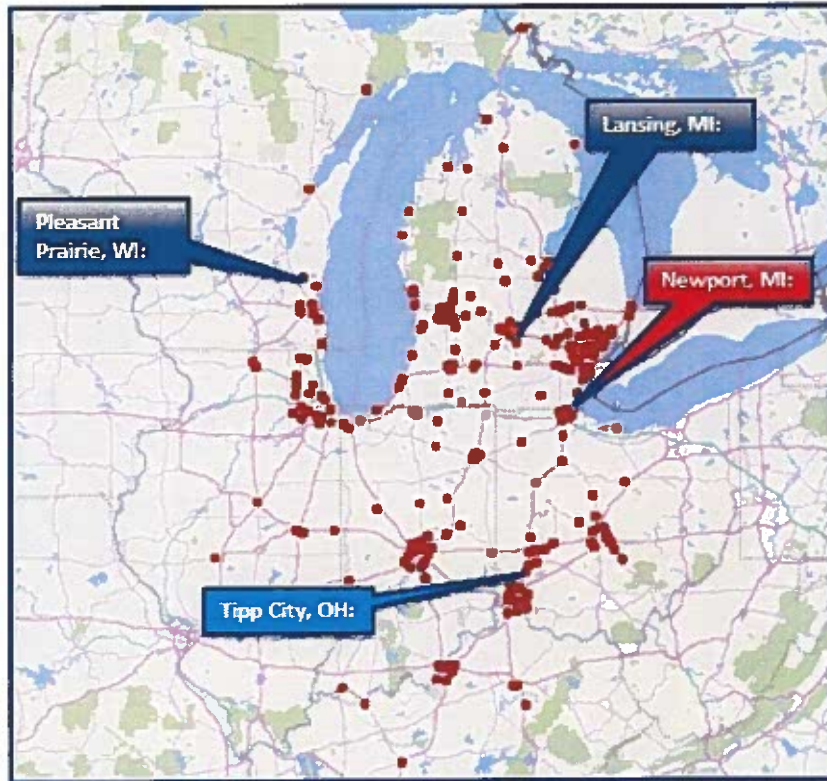


Pleasant Prairie, WI



# Meijer Fully Automated Grocery

## Grocery Network



### Pleasant Prairie, WI

- Fully automated WITRON
- 200K sq ft
- Approximate cases per day: 90K-110K

### Lansing, MI

- Fully automated WITRON
- 550K sq ft
- Approximate cases per day: 230K-300K

### Tipp City, OH

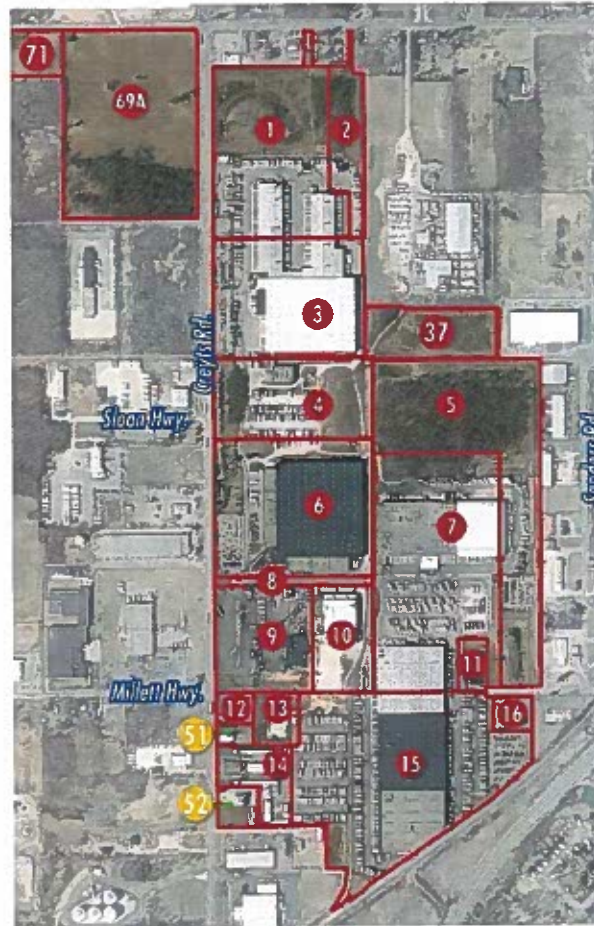
- Mechanized building today
- Fully automated WITRON under construction
- 375K sq ft
- Approximate cases per day: 140K-200K

### Newport, MI

- Mechanized building today
- Automated WITRON under consideration



# Lansing Distribution Site (346 Acres)



# Lansing Automated Distribution

## DC84 – WITRON (Opened 2017)

- Meijer's Lansing automated distribution center is the largest of its kind in the United States.
  - 50 acres
  - 553,000 sq ft
  - 84 ft tall
  - 84 dock doors
- Can store nearly 50,000 pallets worth of product at any given time within the automation.
- Receives over 1,000 truckloads of groceries a week, and ships roughly 800 truckloads of product to 82 Meijer stores.
- Moves an average of 240,000 cases of goods daily.
- The automated system creates over 1,500 pallets of aisle-ready product along with thousands of pallets of other goods delivered daily to Meijer stores.
- Includes 23 assembly lines for manufacturing pallets for final delivery supported by
  - 10 full load unit cranes
  - 46 mini-load cranes
  - 23 sequence buffers
  - 23 case order machines

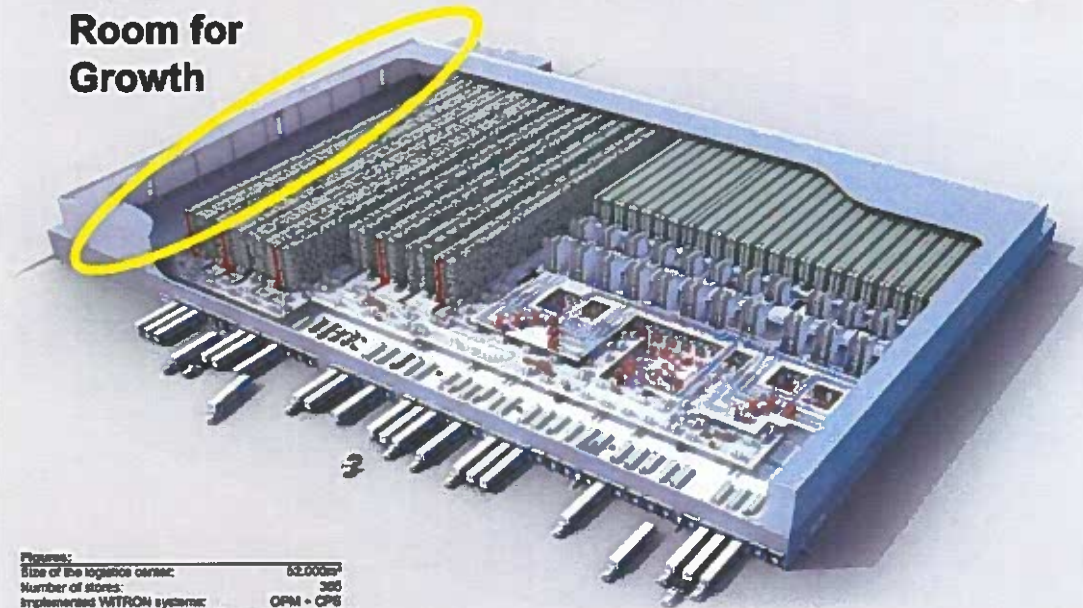
# Lansing Automated Distribution

**WITRON**

Meijer DC #4, Lansing MI, USA

**meijer**

**Room for Growth**



**Figures:**  
 Size of the logistic center: 62.000m<sup>2</sup>  
 Number of stores: 366  
 Implemented WITRON system: OPM - CPS  
 Assortment: Dry goods assortment  
 Number of SKUs: 16.800  
 Total picks per day (peak day): 367.800

**Pallet high bay warehouse - CPS (Car Picking System):**  
 Aides: 10  
 Stacker cranes: 10  
 Pallet locations: 38.400  
 Flow cranes CPS: 800

**OPM (Order Picking Machinery):**  
 Case Order Machines (COMs): 23  
 Aides bay warehouse: 48  
 Stacker cranes tray warehouse: 48  
 Order sequencer (LFS): 48  
 Tray locations: 430.000  
 Trays in stock (84%): 806.000

Automation design and installation  
 of general warehouses for

**WITRON**

WITRON  
 Logistik-Systeme GmbH  
 Industriestraße 17  
 42699 Solingen  
 Phone: +49 212 6533-111  
 Fax: +49 212 6533-112  
 Email: info@witron.com  
 Website: www.witron.com





# Who pays Michigan's PPT?

## SUBJECT TO PPT



**meijer**  
Stores



**meijer**  
Manufacturing &  
Distribution Centers



**meijer**  
Corporate Offices

## EXEMPT FROM PPT



**Eligible Industrial &  
Manufacturing Personal  
Property (EMPP)**



Industrial Facilities Exemption



Detroit Region Aerotropolis



m

meijer