



Health Data Utility In Michigan



The MiHIN Team



Isabell Pacheco, DSc, FACHE

**Chief
Administrative
Officer**



Kim Bachelder

**Director
of State
Accounts**



Marty Woodruff

**Chief
Commercial
Officer**

Brief History: Michigan Health Information Network Shared Services

Federal Office of National Coordinator establishes State Health Information Exchange Cooperative Agreement Program

Michigan forms Health Information Technology Commission, which establishes MiHIN.

Active Care Relationship Service (ACRS) and Admission Discharge, Transfer (ADT) Notifications go live

97%

of Admissions Discharge Transfer Notifications statewide sent through MiHIN

Common Key Service introduced for patient matching

131,133,812

cumulative Immunization Queries

MiHIN completes its corporate affiliation of Great Lakes Health Connect (GLHC)



MiHIN
Michigan Health Information Network

MiHIN
Shared Services

100 M

messages routed through statewide network

1 BILLION

messages routed through statewide network

Michigan Health Information Network Shared Services (MiHIN)

MiHIN is Michigan's only statewide health information exchange. Designed to continuously improve healthcare quality, efficiency, and patient safety, MiHIN facilitates the secure, electronic exchange of health information throughout the state. MiHIN represents a growing network of public and private organizations working to overcome data sharing barriers, reduce costs, and ultimately advance the health of Michigan's population.



Network of Networks



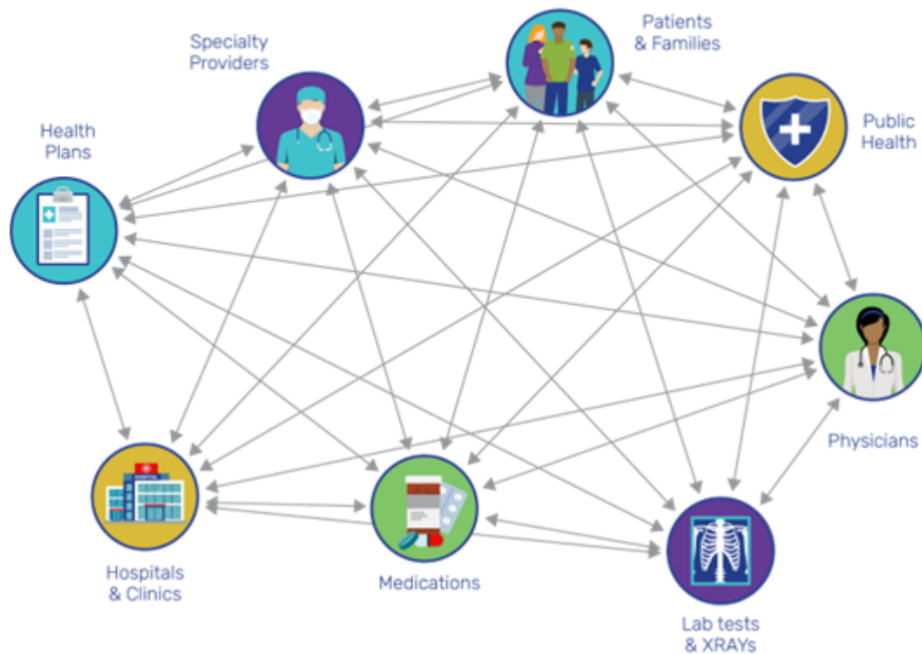
Making valuable data available at the point of care.

An aerial photograph of a long suspension bridge spanning a vast body of water. The bridge features tall, white, lattice-structured towers and numerous vertical cables supporting the deck. The water is a deep blue, and the sky is clear. The entire image is overlaid with a semi-transparent blue filter. Centered over the bridge is white, bold text.

**Statewide Health Information
Exchange Bridges Gaps,
Creates Efficiency**

BEFORE

Duplication of effort, waste and expense



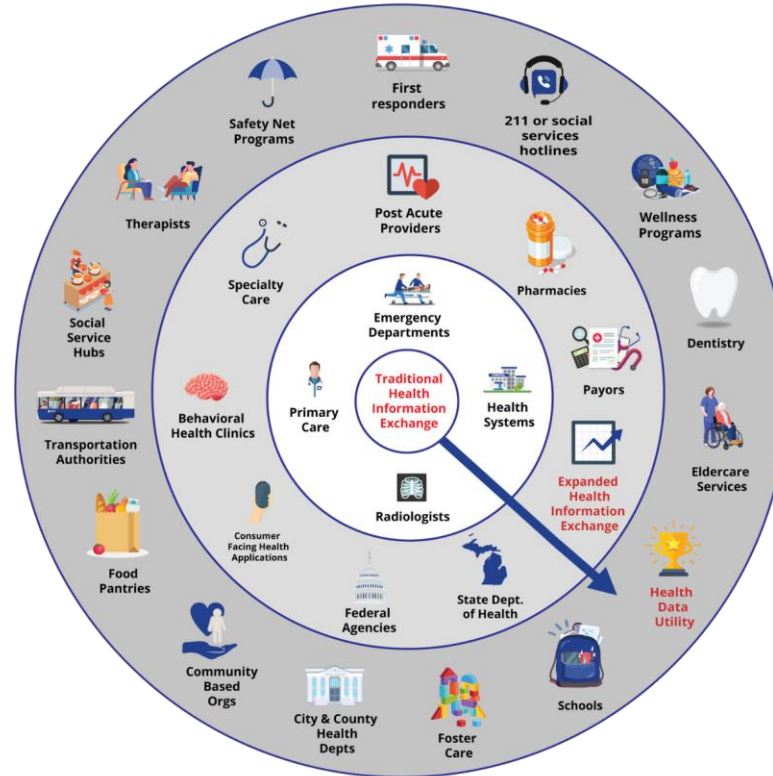
NOW

Connect once to access shared services



FUTURE

Support whole person care with health data utility



Priorities of the State-Designated HDU

- Enhance and accelerate **interoperability** of social, physical and behavioral health data
- Focus on initiatives that improve **health equity**
- Enable a **holistic, whole person** view
- Consider potential benefits and risks for **communities and individuals**
- Support **public health interventions** promoting the health of all



How will this impact your constituents?



Whole Person Care

HDUs aggregate data from various sources, ensuring secure, timely access to relevant population and public health data and providing a holistic view of an individual's health, including social and community factors. By ensuring data availability at any care point, HDU aids in informed decision making and supports whole-person care.



Enhanced Care Coordination

HDU streamlines access to critical health information for healthcare providers and care teams, ensuring that relevant data is readily available at the point of care. HDU ensures data availability at any care point, aiding informed medical decisions.



Improved Health Outcomes

The HDU model facilitates timely access to comprehensive health and social data, enabling care teams to make informed decisions about diagnoses and treatment plans, leading to more effective care and improved health outcomes for Michigan residents.



Cost Savings

By reducing duplicative and unnecessary testing and procedures, HDU can contribute to significant cost savings in the healthcare system. This ultimately benefits both Michigan residents and the state's budget.

How will Michigan's HDU be funded?



- HB 5284 creates the funding for Michigan's HDU infrastructure utilizing the Insurance Provider Assessment Act (IPAA) as a long-term, durable funding source (not out of the MDHHS General Fund budget).
- HDU is exactly the type of initiative IPAA was designed to support, assisting with systems and infrastructure to support meaningful health care for the residents of Michigan

Why is now the right time for HDU?

Support the Michigan Health Information Technology Health IT Roadmap *Bridge to Better Health Report*



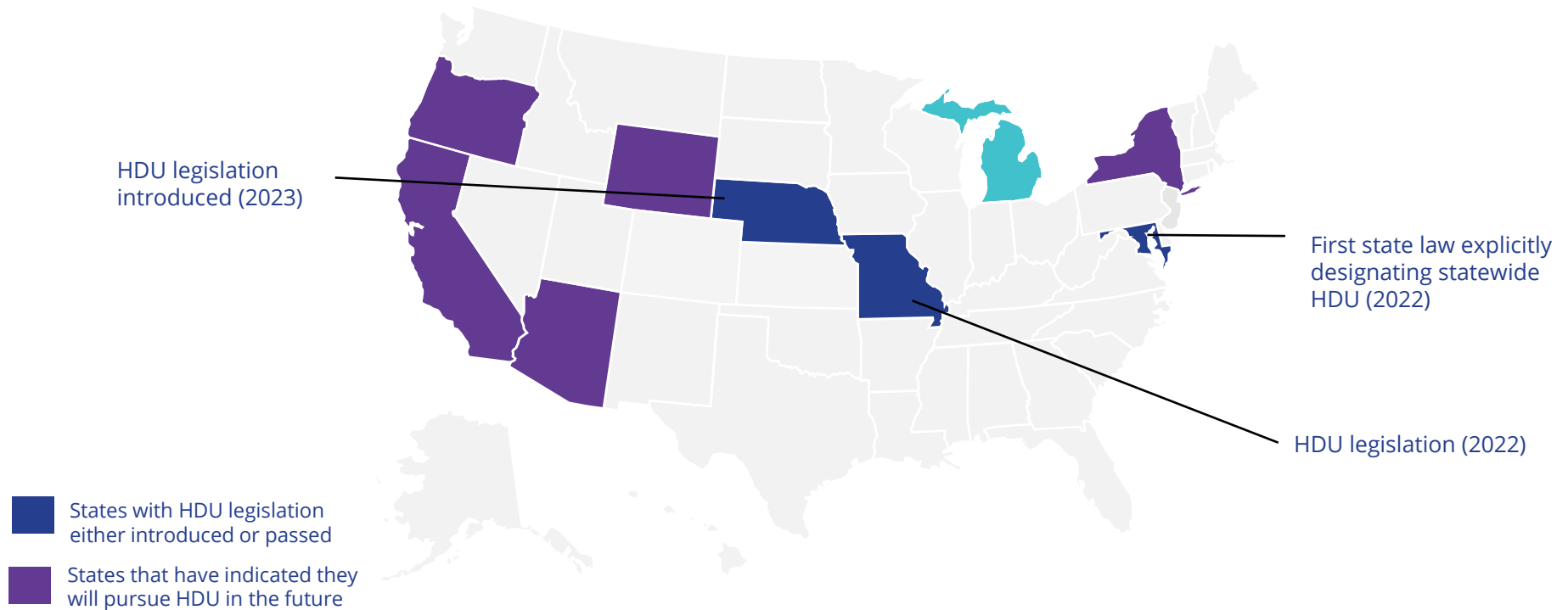
Aligns with 21st Century Cures Act

Health plans shifting to “whole person care” models. Bridging the gap between health and social care



Need to modernize public and population health through increased data availability

What are other states doing?



What is the National Landscape of HDU?

COMPONENT	ARIZONA	CALIFORNIA	COLORADO	MARYLAND	MISSOURI	NEBRASKA	NEW YORK	OREGON
STATEWIDE HIE	✓		✓	✓		✓	✓	
HDU FUNDING				✓	✓			
HDU LEGISLATION				✓	✓			

MiHIN's Commitment to Cybersecurity

The Michigan Health Information Network (MiHIN) is at the forefront of cybersecurity in Michigan, as seen through its membership in the Michigan Health Care Cybersecurity Council (MiHCC). Established in 2017, this public-private partnership works to safeguard critical healthcare infrastructure across the state. MiHIN's involvement ensures a strong focus on protecting sensitive patient data within Michigan's healthcare system.



How will Michigan's HDU Ensure Privacy & Security?



- An HDU builds off of the existing legal and technical infrastructure
- Complies with all federal, state, and local policies and regulations related to security, privacy and HIPAA standards
- Protected under the Health Information Trust Alliance (HITRUST) as well as DirectTrust.
- In May 2024, MiHIN once again received DirectTrust Health Information Service Provider (HISP) Accreditation

Privacy & Security Are Paramount



- Security breaches have greatly impacted the healthcare ecosystem
- MiHIN strives to create a secure environment for healthcare data in Michigan by mitigating the threat of security breaches and ensuring the highest level of privacy for patient data.
- All MiHIN employees undergo rigorous cybersecurity, privacy and HIPAA training annually, achieving a high pass rate of 80% or better.

THANK YOU

LET'S CONNECT



mihin.org



[@MiHIN](https://twitter.com/MiHIN)



linkedin.com/company/mihin