

Presentation to the Joint Capital Outlay Subcommittee

By Dr. Beverly Walker-Griffea,
President, Mott Community College

April 12, 2023



MOTT COMMUNITY COLLEGE

Overview

Locations

- Main campus in Flint, three Extension Centers (Clio, Fenton, & Lapeer), and an office in Owosso
- Workforce & Economic Development division and Culinary Arts Institute located in downtown Flint



MOTT COMMUNITY
COLLEGE

CHANGING LIVES for a Changing World



MCC by the Numbers

- 8,337 unduplicated student enrollment in credit programs
- 2,152 unduplicated student enrollment in non-credit programs
- 64 Second Chance Pell students
- Offers more than 100 degree and certificate programs in six different divisions and in workforce education



MOTT COMMUNITY COLLEGE

CHANGING LIVES for a Changing World



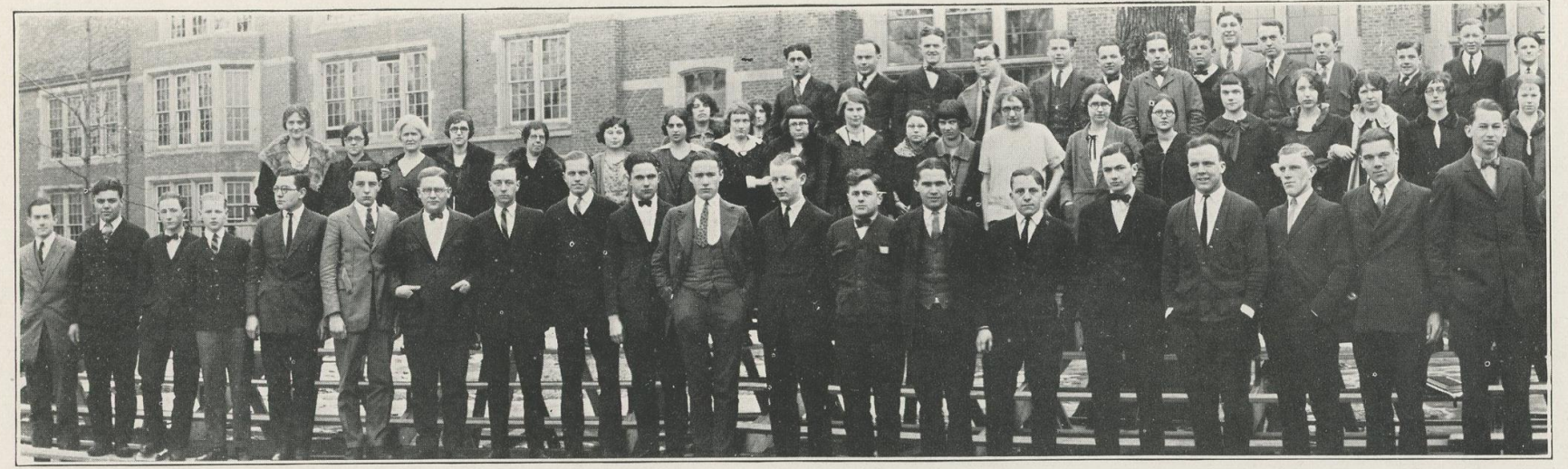
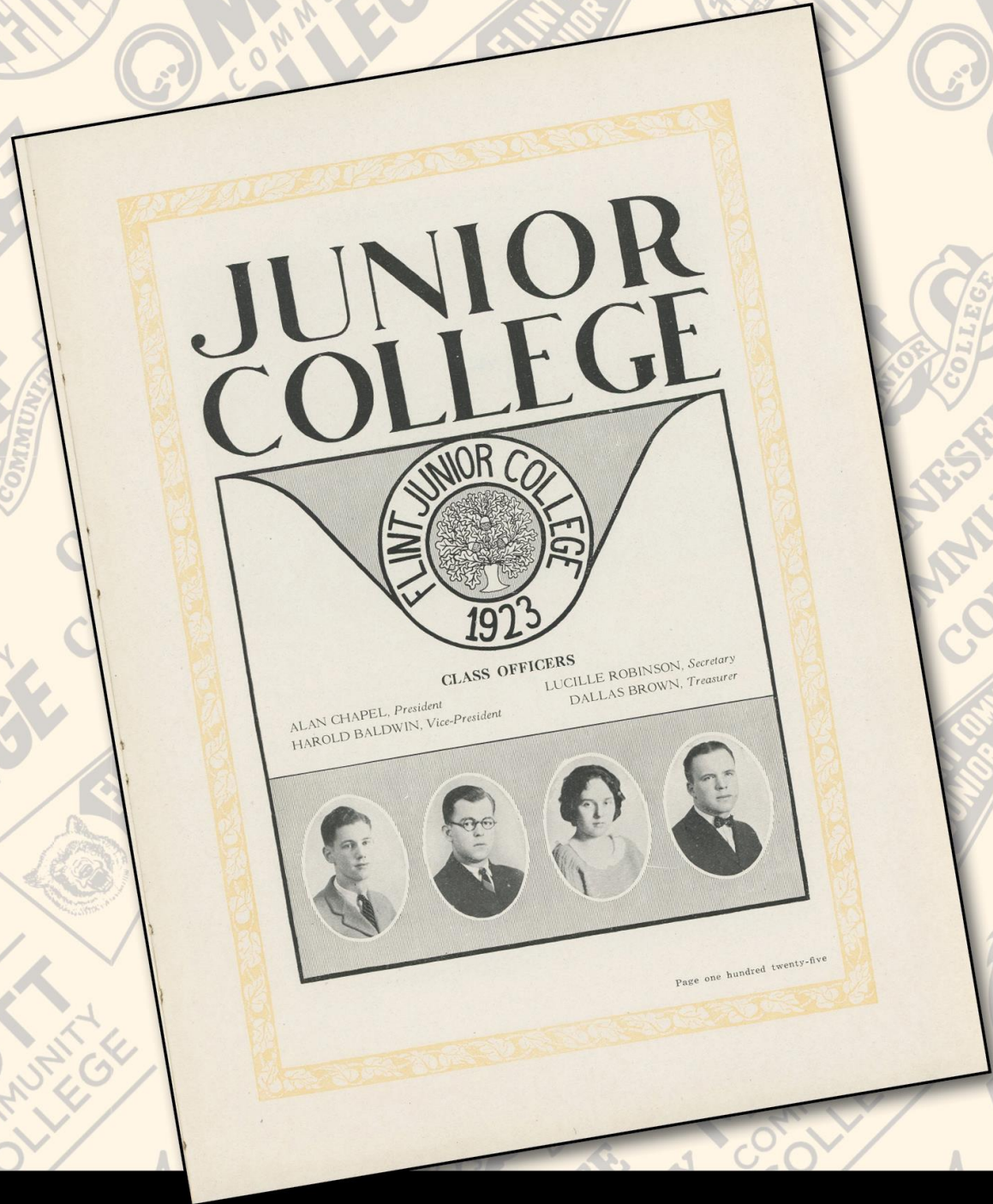
MCC by the Numbers

- 66% female & 34% male
- 74% part-time & 26% full-time
- 43% Pell eligible
- Average age is 26 years old
- Race:
 - White 56%
 - Hispanic 15%
 - Black 15%



MOTT COMMUNITY
COLLEGE

CHANGING LIVES for a Changing World



FLINT JUNIOR COLLEGE STUDENTS

Flint Junior College Class of 1924



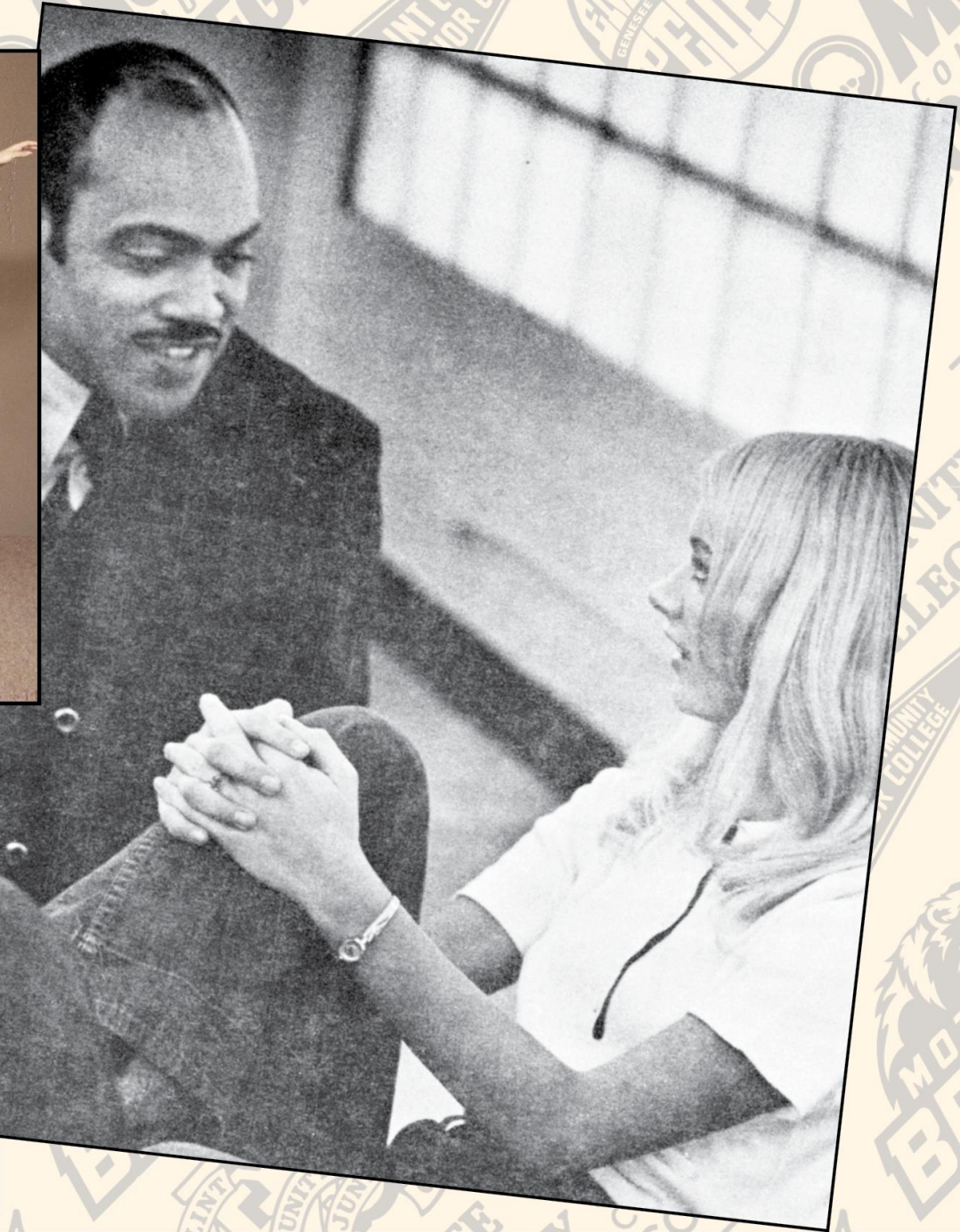
1923 - CENTENNIAL CELEBRATION - 2023



Flint Junior College



1923 - CENTENNIAL CELEBRATION - 2023



Flint Junior Community College



1923 - CENTENNIAL CELEBRATION - 2023



Mott Community College



1923 - CENTENNIAL CELEBRATION - 2023

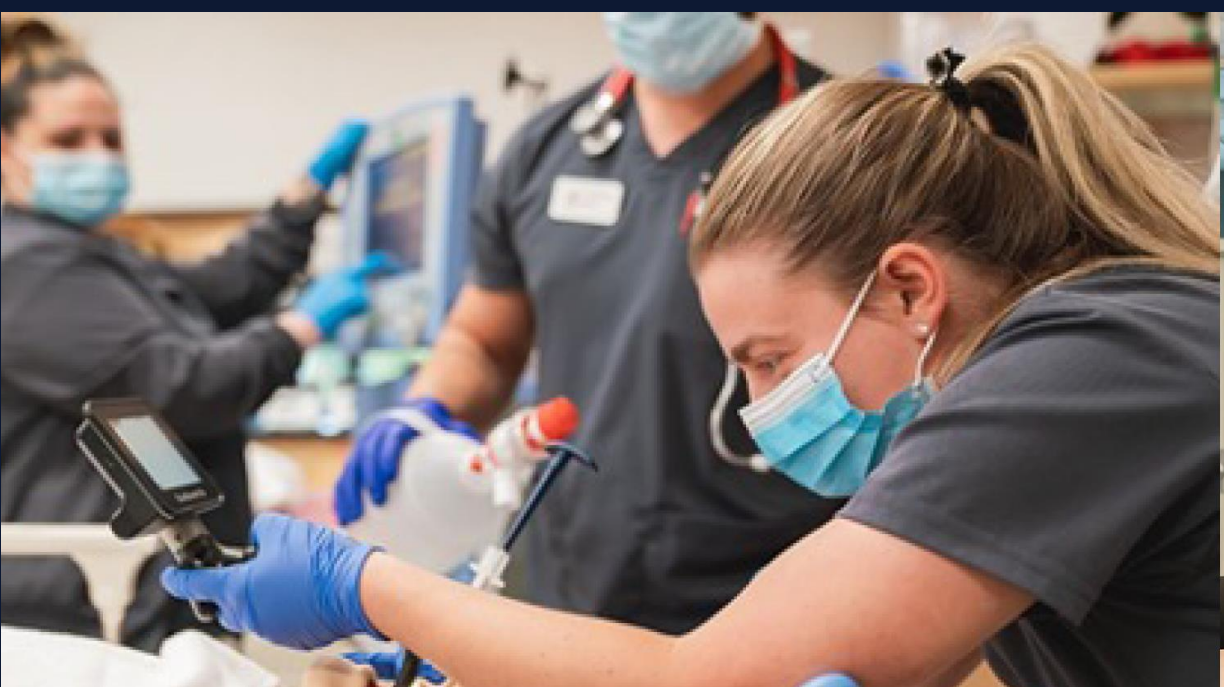
Aspen Awards





Role of MCC in the Community

- Anchor Institution
- Stable Foundation
- Safe Haven



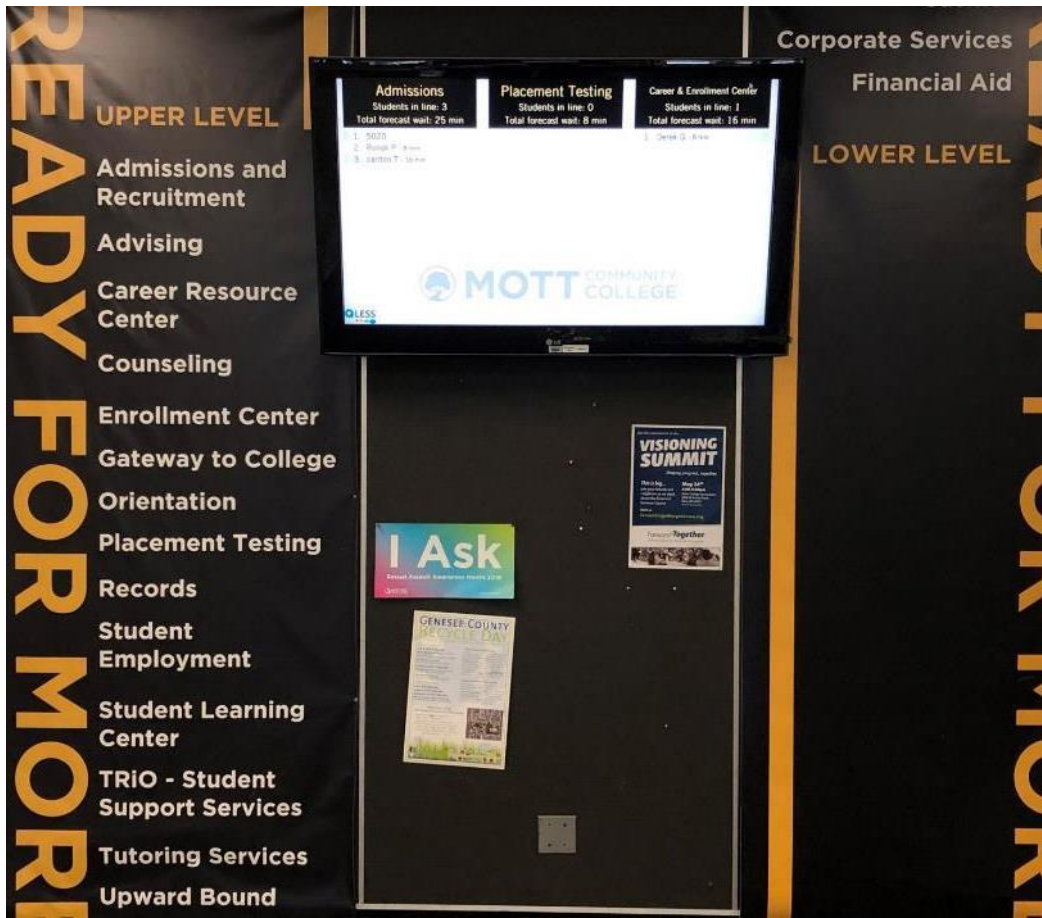
CHANGING LIVES for a Changing World
Forward Together

PRAHL COLLEGE CENTER *RENOVATION*

MOTT COMMUNITY COLLEGE

IDS PROJECT NO. 21104-1000

EXISTING CONDITIONS



EXISTING CONDITIONS



EXISTING CONDITIONS

THE TRANSFORMATION



UPPER LEVEL | TECHNOLOGY & CYBER HUB

MOTT COMMUNITY COLLEGE PRAHL COLLEGE CENTER RENOVATION

04.11.2023

18





UPPER LEVEL | ARTIFICIAL INTELLIGENCE LAB

MOTT COMMUNITY COLLEGE PRAHL COLLEGE CENTER RENOVATION

04.11.2023

19





ENTRY LEVEL | MAIN LOBBY

MOTT COMMUNITY COLLEGE PRAHL COLLEGE CENTER RENOVATION



ENTRY LEVEL | MULTIPURPOSE FORUM

MOTT COMMUNITY COLLEGE PRAHL COLLEGE CENTER RENOVATION

04.11.2023

21





LOWER LEVEL | NORTH ENTRY / UPWARD BOUND



LOWER LEVEL | FUTURE CAREERS HUB

MOTT COMMUNITY COLLEGE PRAHL COLLEGE CENTER RENOVATION

04.11.2023

23

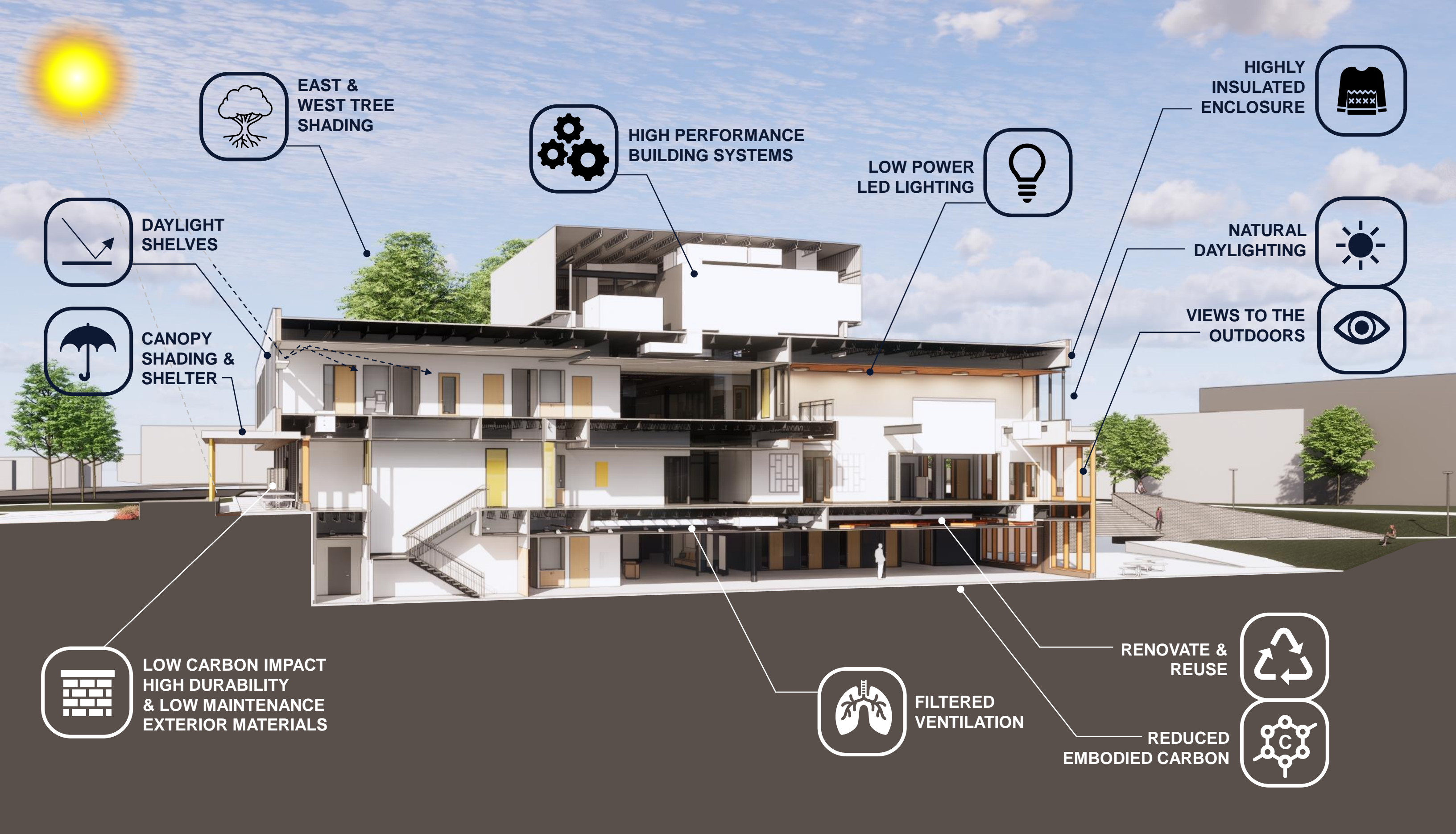
Act with Economic, Environmental and Social Sustainability

PROJECT OBJECTIVE: “Going Green & Creating Energy Efficiencies”

- Reuse / repurpose existing facilities (carbon saving in concrete and steel)
- Improve facilities with consideration to lowering the operational energy use while reducing overall carbon footprint (exceeding code by approx. 30%)
- Improve access to daylight from majority of occupiable spaces
- Low power LED lighting
- Healthy, low-emitting finish materials
- Solar-ready alternative energy systems
- Lower maintenance required for lawns and landscaping
- Preserve old growth tree canopies and woodlands (also, building shading)
- Biophilic wood materials for enhanced wellbeing

GUIDING PRINCIPLES





SUSTAINABILITY & WELLNESS ROADMAP OF FEATURES



EAST ENTRY | REDUCED

MOTT COMMUNITY COLLEGE PRAHL COLLEGE CENTER RENOVATION

04.11.2023

26



MAIN ENTRY | REDUCED

MOTT COMMUNITY COLLEGE PRAHL COLLEGE CENTER RENOVATION



FRONT ENTRANCE | REDUCED

MOTT COMMUNITY COLLEGE PRAHL COLLEGE CENTER RENOVATION



NORTH ELEVATION | COMMUNITY EVENTS PLAZA

MOTT COMMUNITY COLLEGE PRAHL COLLEGE CENTER RENOVATION

04.11.2023

29



Dr. Marie Prahl

