



# **Supportive Housing**

House Appropriations Subcommittee on Human Services

April 21, 2025

**Supportive housing** combines affordable housing with services that help people who face the most complex challenges to live with stability, autonomy and dignity.

### **Positive Outcomes for Individuals & Communities**

- ✓ Housing stability
- ✓ Increased income
- ✓ Improved physical & mental health
- ✓ Decreased reliance on emergency services
- ✓ Decreased homelessness



# Types of Services Provided to Residents in Supportive Housing

- Housing search & landlord negotiation
- New tenant orientation/move-in assistance
- Transportation
- Nutritional services
- Medication management support
- Skill-building in cooking, cleaning, self-care
- Financial management and budgeting
- Support increasing income
- Referrals to other services & programs





# Statewide & National Data/Outcomes

## 2023 MI Homelessness Data

- 33,226 total homeless
  - 46% Black or African American (despite being 14% of MI's overall population)
- 4,758 chronically homeless

## Social Impact & Cost-offsets in Supportive Housing

- 30% decrease in jail stays
- 40% decrease in ER visits
- \$6,875 cost-offset per person

\*Data from Denver social impact bond study conducted by Urban Institute

4,500 served in existing Supportive Housing programs

# Impact of Previous State Appropriations



## **FY23 Budget - \$6M**

### **4 SH providers received funding**

- 470 SH residents served
- 98% housing stability rate
- 82% maintained or increased income

## **FY24 Supplemental Budget - \$20M**

### **Approximately 22 SH providers receiving funding\***

- Estimated to serve over 2000 more SH residents
- Capacity building investments will lead to even more residents being housed in SH
- Investments in SOAR (SSI/SSDI Outreach, Access, and Recovery) will help people increase income & contribute more toward rent

\* applicants requested over \$40M; awaiting final award announcement from MDHHS

**[csh.org](https://csh.org)**



# FY26 Appropriation Request

**Based on ongoing need, pursuing \$25M appropriation for FY26**

- Expected to serve 3,125 total SH residents
- Annual funding need expected to decreased as Medicaid reimbursement increases

# Northwest Michigan Supportive Housing



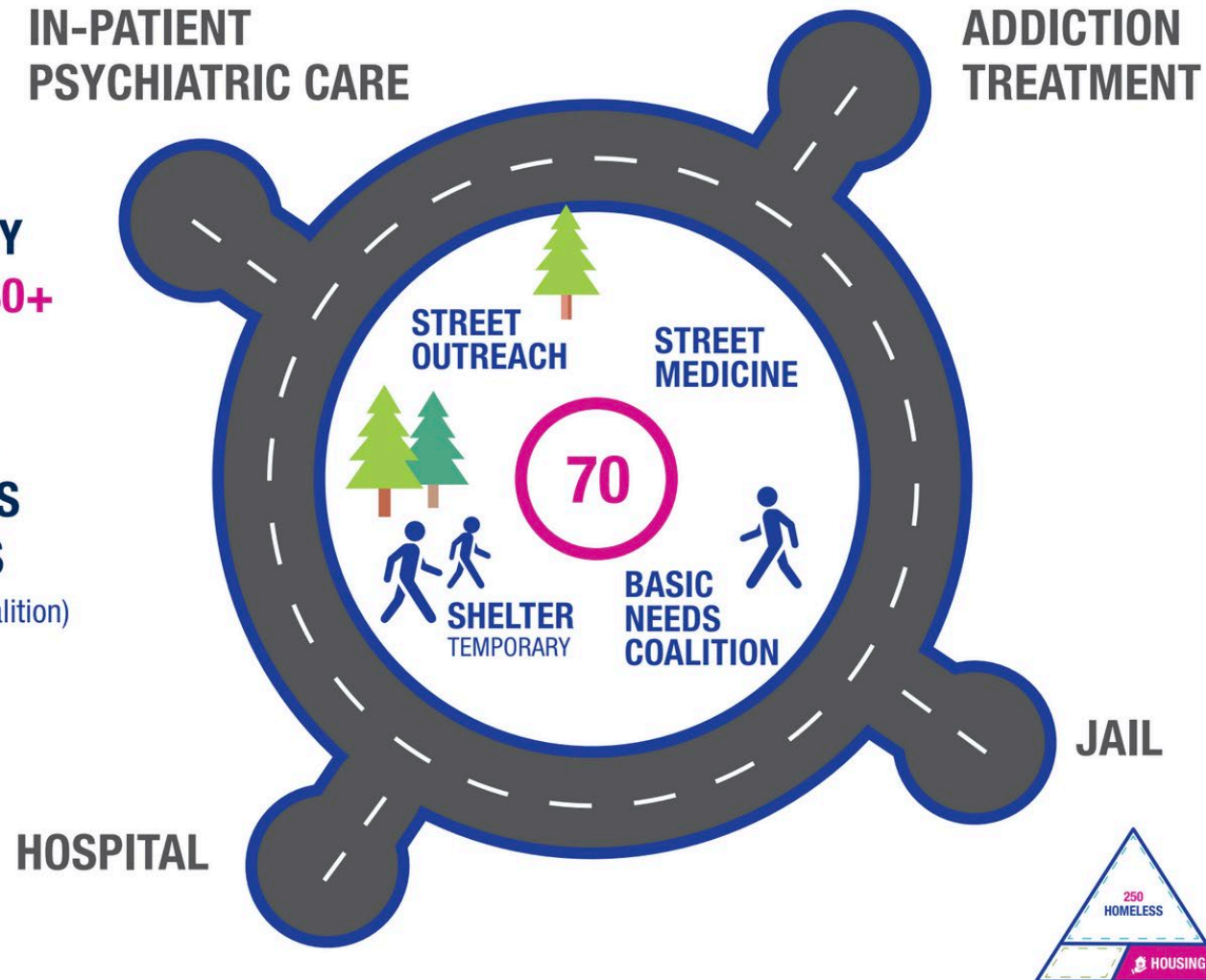
- **Service area:** Antrim, Benzie, Grand Traverse, Kalkaska, and Leelanau counties
- **Services:** Permanent supportive housing (case management and rental subsidies)
- **Funding sources:** HUD, MSHDA, MDHHS, Grand Traverse County, City of Traverse City



## CHALLENGE

# CHRONIC HOMELESSNESS

- **LIFE EXPECTANCY**  
**48** INSTEAD OF **80+**  
(SOURCE: UPenn)
- **53 PEOPLE HAVE**  
**DIED ON STREETS**  
**IN PAST 5 YEARS**  
(SOURCE: Basic Needs Coalition)



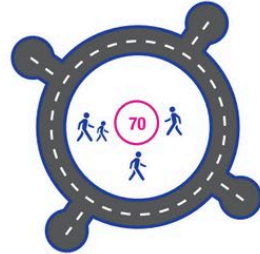


# CHRONIC HOMELESSNESS

**TODAY**

**\$2,450,000 /YR**

Costs to maintain  
70 people  
in homelessness



**MUNSON**

**\$1.26M /YR**

**POLICE /AMBULANCE**

**407 INCIDENTS /YR**



**FUTURE**

**\$945,000 /YR**

Costs for those same  
70 people  
in housing with supports



• **VOUCHERS**

• **SUBSIDIES**



# Northwest Michigan Supportive Housing

- **Supportive services**: life skills training, housing stability, budgeting, family reunification, landlord/tenant rights, access to healthcare, mental health, income
- 57% of clients gained or increased their income
- 96% retention rate

