



Program of All-inclusive Care for the Elderly (PACE)

House Appropriations
Subcommittee on Public Health

May 2025

What is PACE?

An integrated system of care for the frail elderly that is:



Community-based



Comprehensive



Capitated



Coordinated



PACE Eligibility

To qualify for PACE, a person must:



Be at least 55 years old



Live within a PACE service area



Be certified by the state to need a nursing home level care



Be able to live safely in the community with our services

The PACE Model - Philosophy

Honors what frail elders want

- To stay in familiar surroundings
- Maintain independence
- Maintain maximum level of physical, social, and cognitive function



In a recent survey commissioned by AARP, 89% of Michigan residents age 50+ said that if they ever need long term care, they'd prefer to receive that care in their own home.

How We Help—All-Inclusive Care

Care is delivered at our full-service Primary Care Clinic, our adult Day Center, and through a network of community providers.



Home care and daily activities



Dressing



Bathing



Eating



Wellness



Meals



Medications
& Prescriptions

Components of PACE's supportive, comprehensive care

Our services include, but are not limited to:

- Lab and diagnostic services
- Medical equipment
- Personal care aides
- Medical specialists
- Occupational therapy
- Physical therapy
- Speech therapy
- Hospitalizations
- Primary medical and nursing care
- Skilled nursing care
- End-of-life comfort care
- Transportation

PACE Financing

PACE: Provider AND Payer

- Fully recognized provider type under **MEDICARE**
- State plan option under **MEDICAID**
- PACE must have a “3-way Agreement” with **MDHHS** and **CMMS**
- PACE is **FULLY INTEGRATED** at the **PLAN** and **PROVIDER** level (equally payer and provider)
- PACE is responsible for **ALL** needed services, not only long-term care services and support



Capitated Financing Encourages



PACE teams to
be proactive



Customize care
based on individual
priorities and
preferences



Intentionally focus
on quality of life
and function



Minimize and
prevent unnecessary
high-cost care



Fully address non-
clinical and
psychosocial
barriers



Careful and
comprehensive care
coordination

PACE Provides High-Quality Outcomes

96% of PACE participants live in the community.

**PACE SAVES
TAXPAYER DOLLARS**



States pay PACE programs
12% LESS
than the cost of other
Medicaid services



**LESS THAN
1 ER VISIT
PER YEAR**

PACE PROVIDES HIGH-QUALITY OUTCOMES

Lower Hospitalization Rate:

A **24 percent lower** hospitalization rate than dually-eligible beneficiaries who receive Medicaid nursing home services.



Decreased Rehospitalizations:

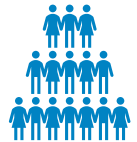
16 percent less than the national rehospitalization rate of 22.9 percent for dually-eligible beneficiaries age 65 and over

1/3 the rate of COVID cases and deaths compared to Nursing Homes

PACE in Michigan



There are **14** independent PACE organizations in **26** Michigan locations



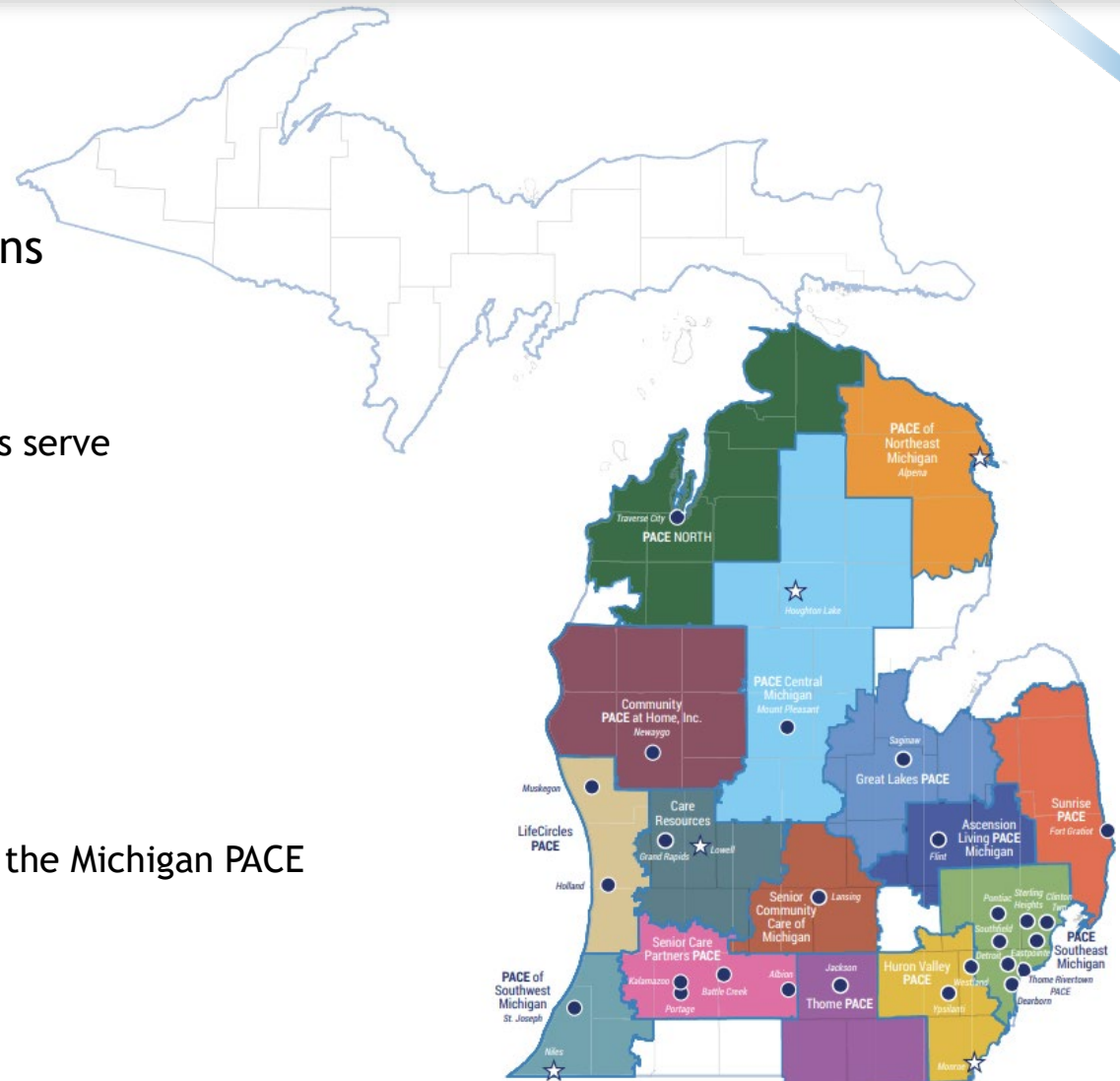
As of January 2025, Michigan PACE organizations serve

5,700 participants



Participation in PACE has increased by

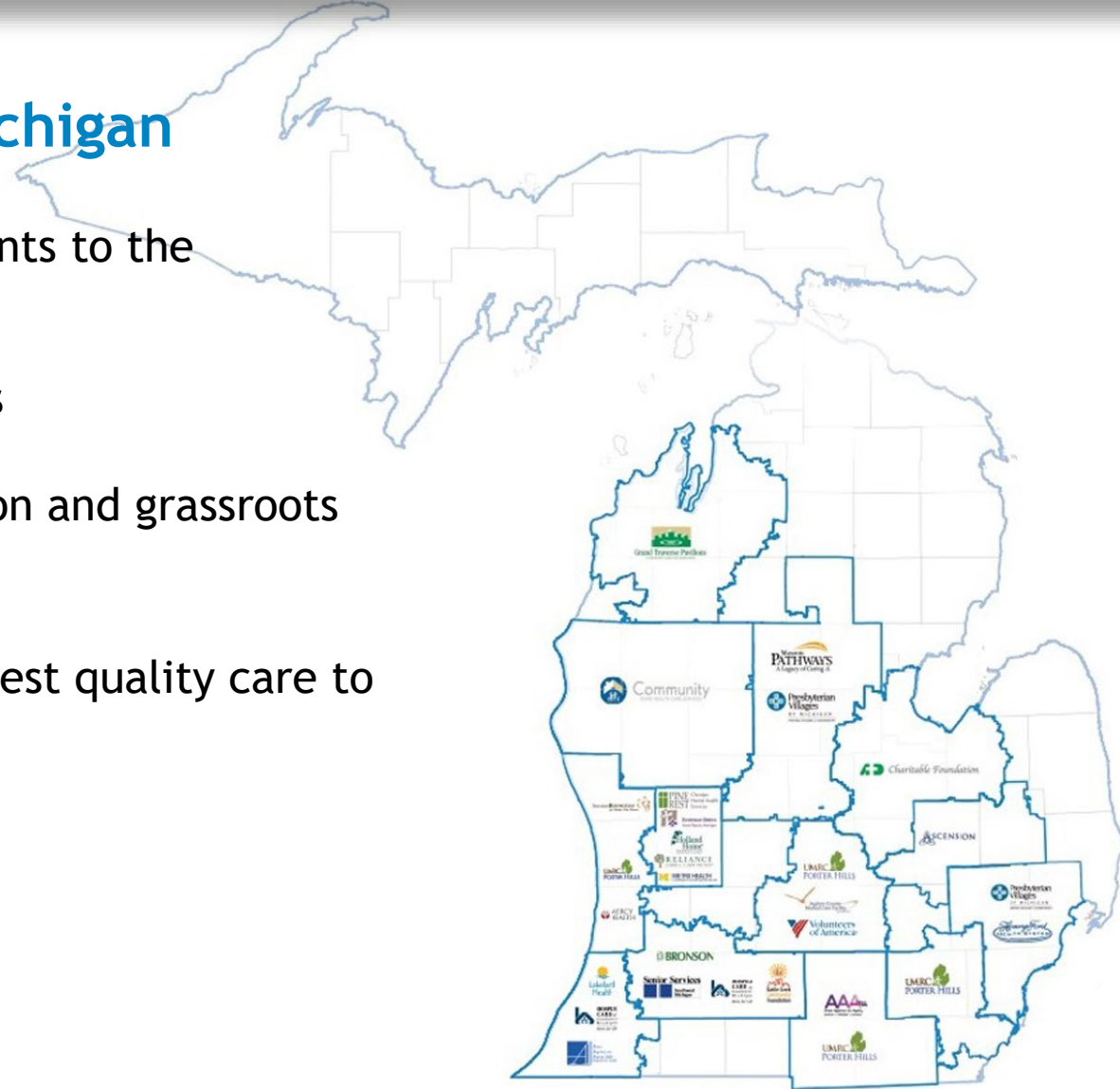
470% from 2012-2022—showing how vital the Michigan PACE program is to our state and its people!



PACE Partners - Sponsoring Organizations

A deep local commitment in Michigan

- Deep roots and long-standing commitments to the communities they serve
- Operating in our state for over 100 years
- Strong record of excellence, collaboration and grassroots engagement
- Widely recognized for providing the highest quality care to thousands of seniors across Michigan



How Michigan Stacks Up Nationally



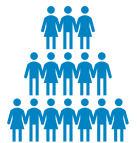
Michigan ranks

3rd in the nation for number of
PACE organizations



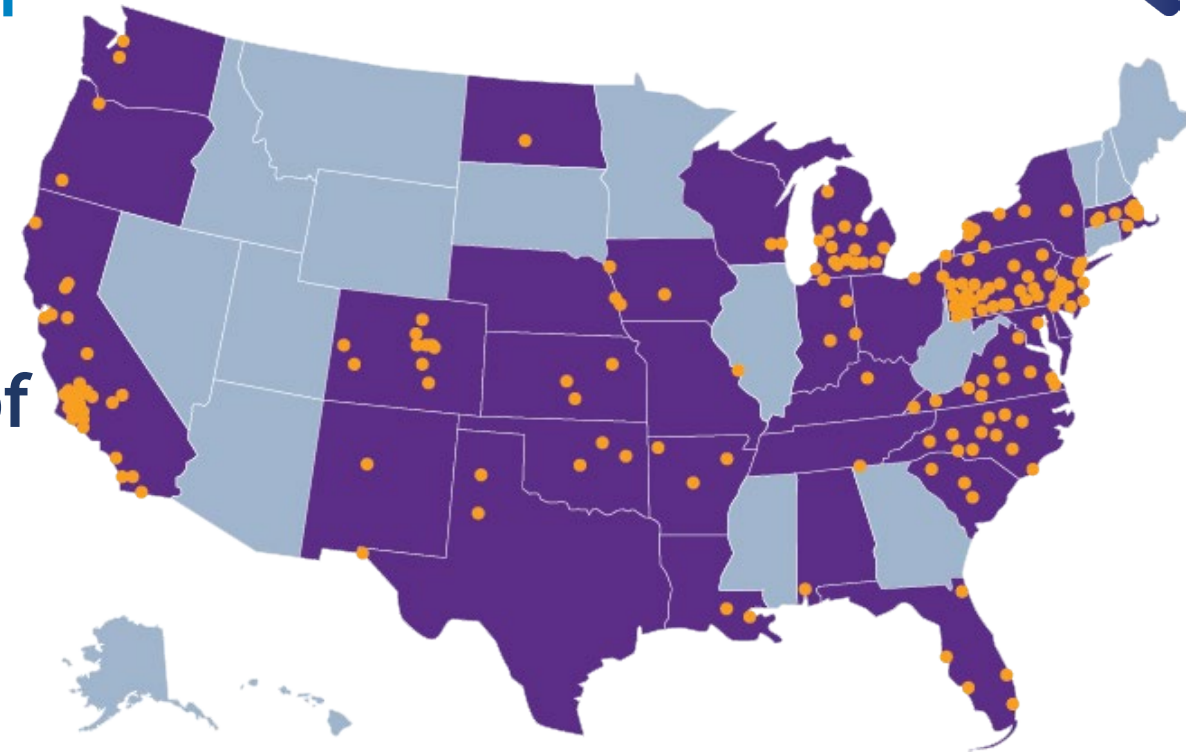
Michigan ranks

5th in the nation for number of
participants served



Nationally, there are **185** PACE organizations in **33** states serving

83,000 participants



Questions

Stephanie Winslow
Executive Director
PACE Association of Michigan
swinslow@pacemichigan.com

Qiana Harrison
Chief Executive Officer
Senior Care Partners PACE
q.harrison@seniorcarepartnerspacemi.org