

Michigan's Network of Centers for Independent Living

House Appropriations Subcommittee on
Labor and Economic Opportunity
Wednesday, April 30, 2025

Disability Network Michigan



15 CILs
cover all 83
counties

1 Disability Network Southwest Michigan (Berrien/Cass)

2 Disability Network Southwest Michigan

3 disAbility Connections

4 Disability Network Washtenaw, Monroe, Livingston

5 Disability Network Wayne County Detroit

6 Disability Network Eastern Michigan (Oakland/Macomb)

7 Disability Network Eastern Michigan (Thumb Region)

8 The Disability Network

9 Disability Network Mid-Michigan

10 Disability Network Capital Area

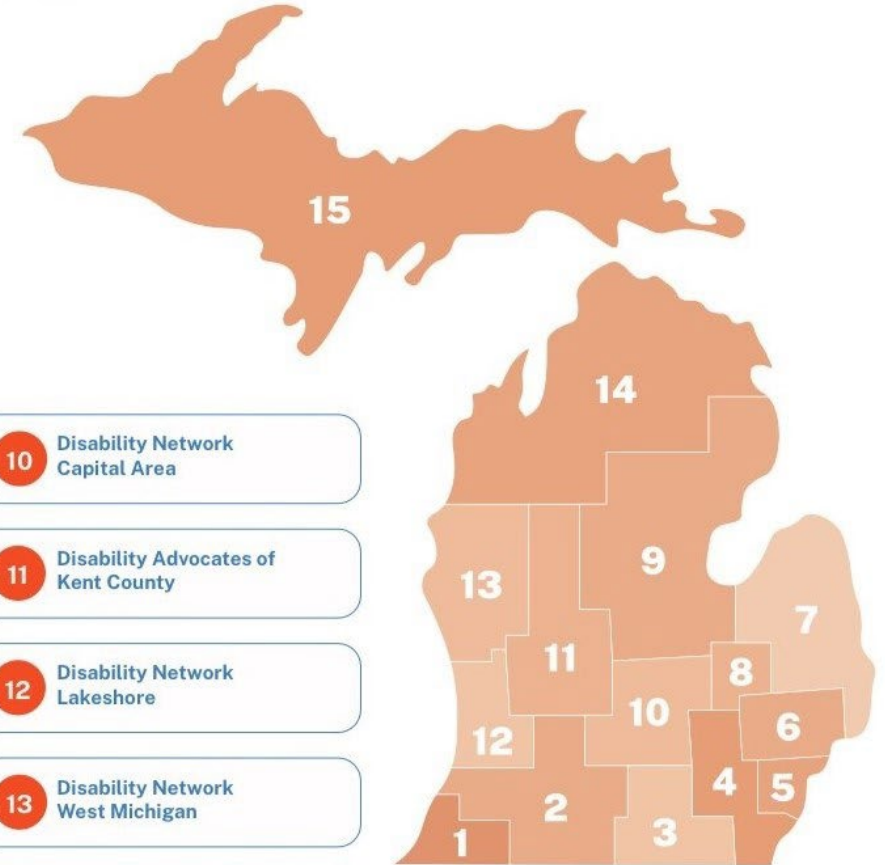
11 Disability Advocates of Kent County

12 Disability Network Lakeshore

13 Disability Network West Michigan

14 Disability Network Northern Michigan

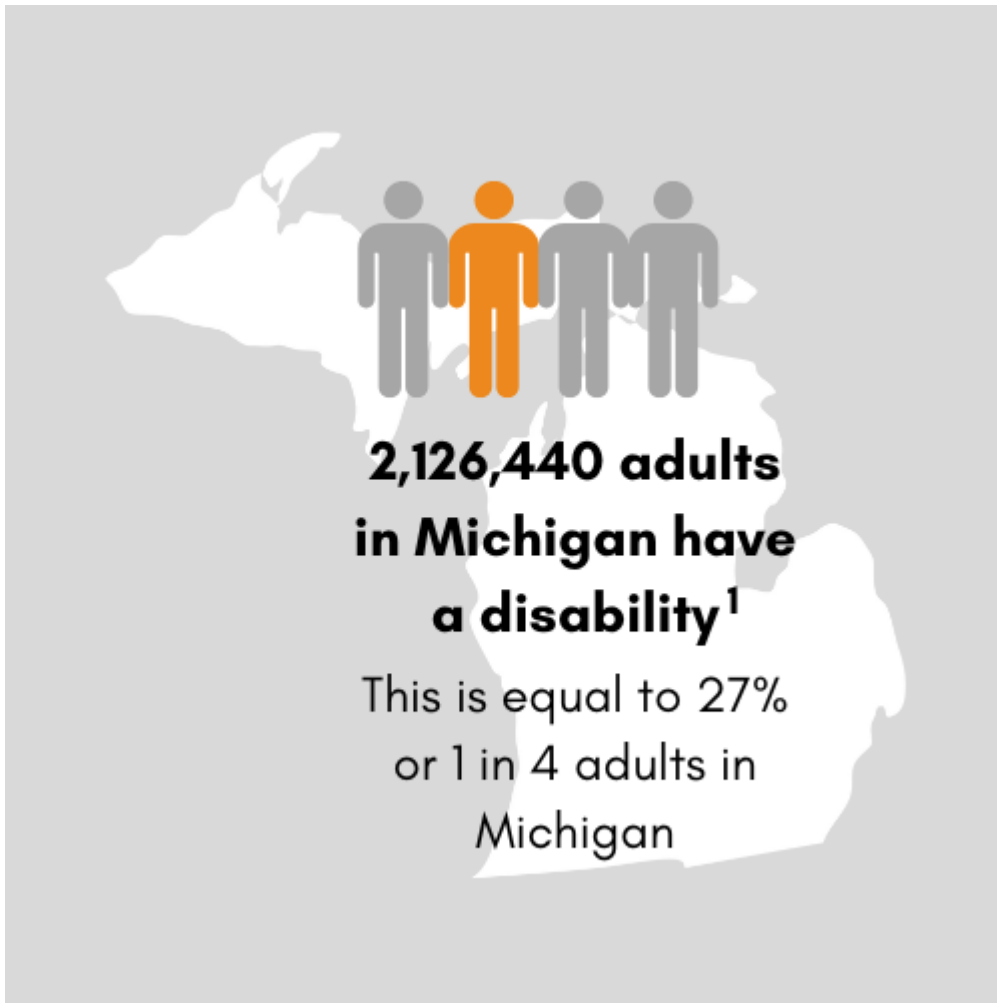
15 Superior Alliance for Independent Living



DNMichigan.org

Centers for Independent Living (CILs)

- created under Part C of the Federal Rehabilitation Act of 1973.
- consumer-driven, community-based, disability organizations that promote independence and self-determination for people with disabilities.
 - consumer-driven: required by federal law to have individuals with disabilities make up 51% or more of the staff in decision-making positions.
 - community-based: staff and board members live and work in the communities the CIL serves.



Whether we are born with a disability, experience one due to illness or injury, or age into one, disability is part of the overall human experience.

¹ 2021 Behavioral Risk Factor Surveillance System (BRFSS).

5 Core Services

Peer Support & Mentoring

Information and Referral

Individual and Systems Advocacy

Independent Living Skills Support

Transition to Community Based Living

Promote and Create Community
Inclusion for People with Disabilities



Funding Sources

Federal—Rehabilitation Act of 1973, (former) Administration for Community Living


State—State General Fund (Michigan Rehabilitation Services, Department of Labor and Economic Opportunity)

Local—Gifts, donations, etc.

Approved Budget Fiscal Year 2025

Funding is distributed through a formula based on the federally approved State Plan of Independent Living (SPIL)

			For Fiscal Year Ending Sept. 30, 2025
Sec. 104. REHABILITATION SERVICES			
Full-time equated classified positions	671.0		
Bureau of services for blind persons—FTEs	116.0	\$	28,726,700
Centers for independent living			19,718,600
Michigan rehabilitation services—FTEs	555.0		145,412,200
Personal assistance services reimbursement for employment program			400,000
Subregional libraries state aid			451,800
GROSS APPROPRIATION		\$	195,719,300
State general fund/general purpose		\$	2,027,200
Sec. 113. ONE-TIME APPROPRIATIONS			
Agricultural tourism hub redevelopment		\$	2,000,000
Auto show public safety			225,000
Brownstown municipal infrastructure			1,500,000
Center for social enterprise development			1,000,000
Centers for independent living			1,000,000

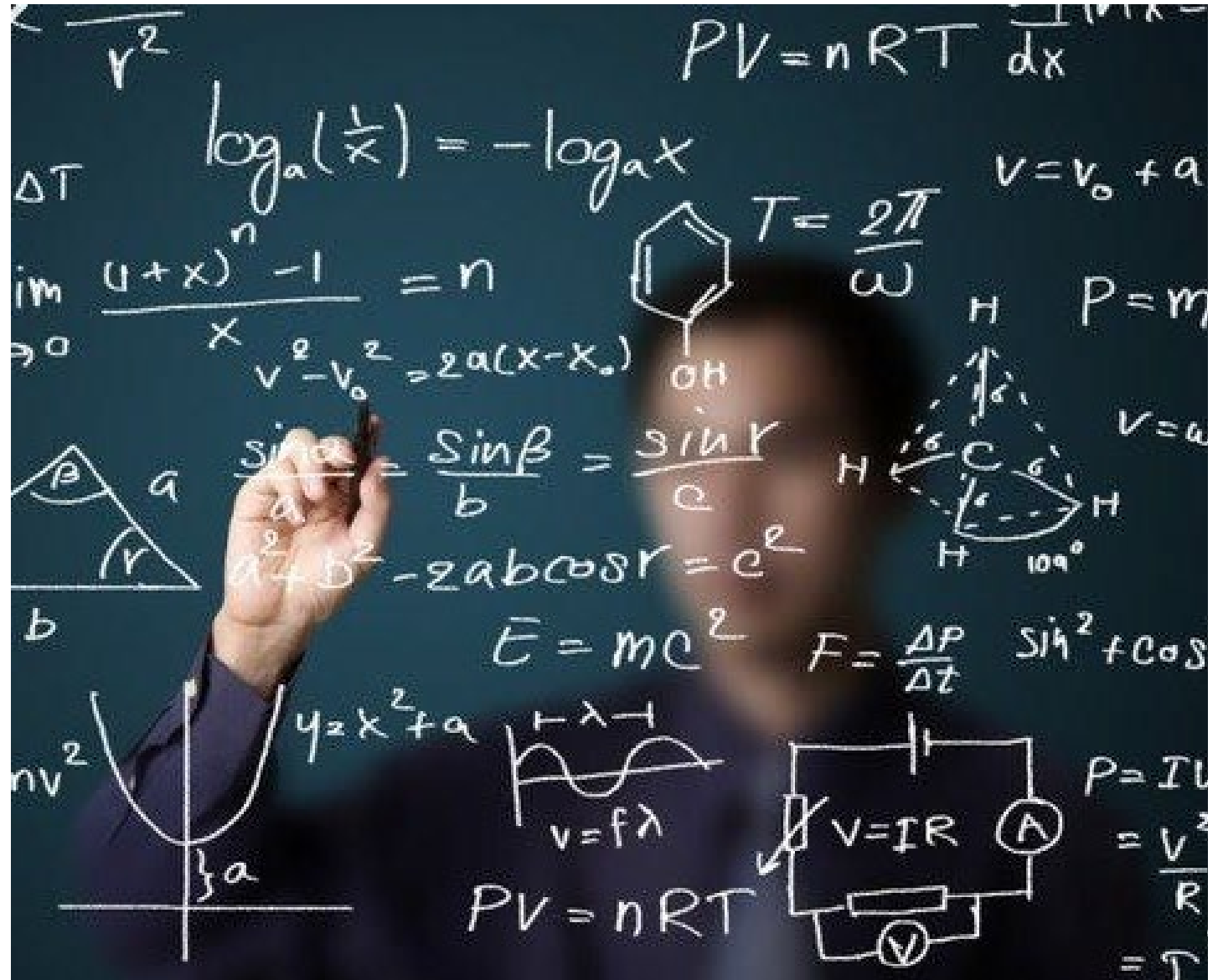
A solid orange vertical bar is positioned on the left side of the slide, extending from the top to the bottom.

Breakdown of funding received in FY 2025 contracts from MRS

GF/GP (includes \$1 million of one-time funding)	<i>State funding used for mandated Independent Living Services (Workforce Innovaton Opportunity Act)</i>	\$12,187,000
(-SILC Contract)	<i>As directed in the SPIL</i>	\$70,000
Program Income	<i>CILs GF/GP shifted to MRS to enable Title I match via FY 2010 Legislative Transfer</i>	\$2,300,000
CIL Title VII, Part B Core Contracts ("Title VII Part B Funding Amount"); 50% of Part B award	<i>the "placeholder" amount for the federal Rehab Act, Title VII, Part B</i>	\$273,208
Total Available Funding	<i>MRS's determination; CILs' contracts</i>	\$14,830,208

ACTUAL CONTRACTS
EQUATED TO NEARLY \$14.6
MILLION

- FUNDS ARE DISTRIBUTED THROUGH A FORMULA APPROVED BY THE FEDERAL GOVERNMENT
- FORMULA IS 50% EQUITY AND 50% EQUALITY
 - (60% POPULATION, 40% GEOGRAPHY)



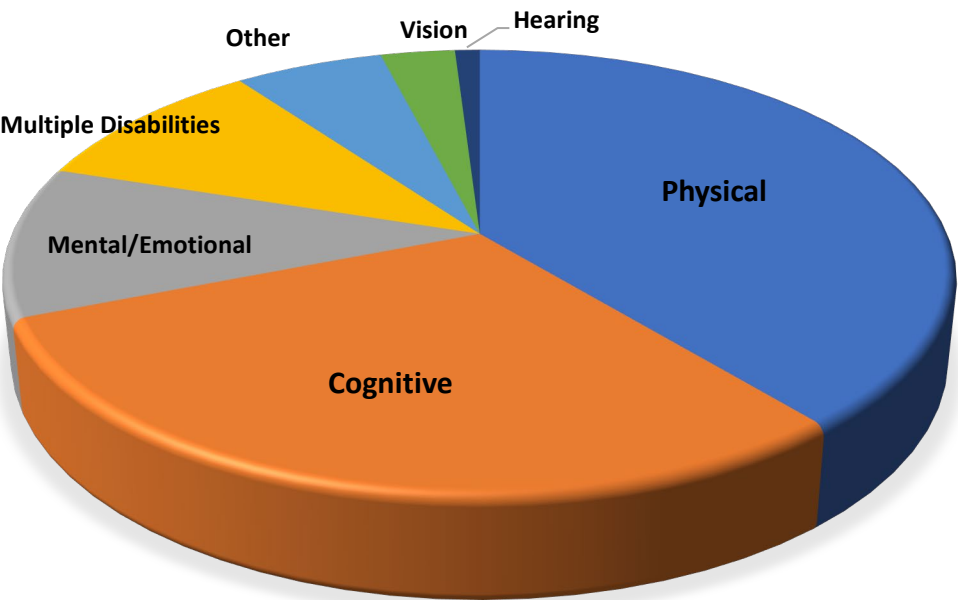


(2) Not later than March 1
and in partnership with
service providers, the
department shall provide a
report to the standard
report recipients on direct
customer and system
outcomes and performance
measures.

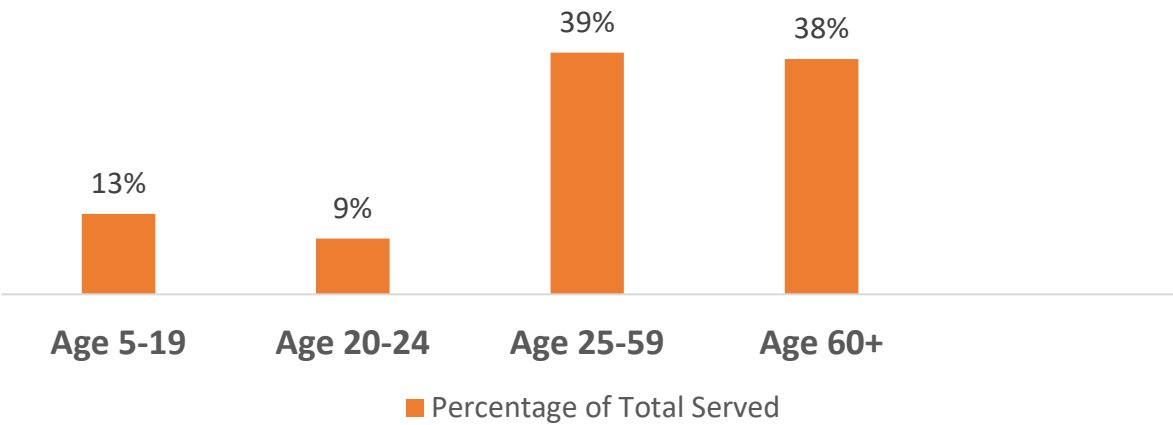
Statewide Demographics

Almost 39% of people served identified themselves as having a physical disability. 30% of those we served self-identified as having a cognitive disability.

DISABILITY TYPES



PERCENTAGE OF AGES SERVED





State partners in our goal for greater accessibility

Changing Lives

- **Connecting individuals with disabilities to supports they need to remain independent**
 - **Help preserve personal resources, health and independence.**



This Photo by Unknown Author is licensed under [CC BY](#)

Example: a patient is ready to be discharged from a hospital or rehabilitation facility and needs modifications to their home

CILs can help by assessing the patient's home and recommending what equipment, such as grab bars, a shower chair, etc, needs to be in place to ensure the patient is safe at home.

Example: a patient has chosen to receive Hospice Care in their home rather than in a facility

CILs can help prepare the home for the patient; ie, install a temporary wheelchair ramp, provide resources for temporary medical equipment such as beds, walkers, etc.

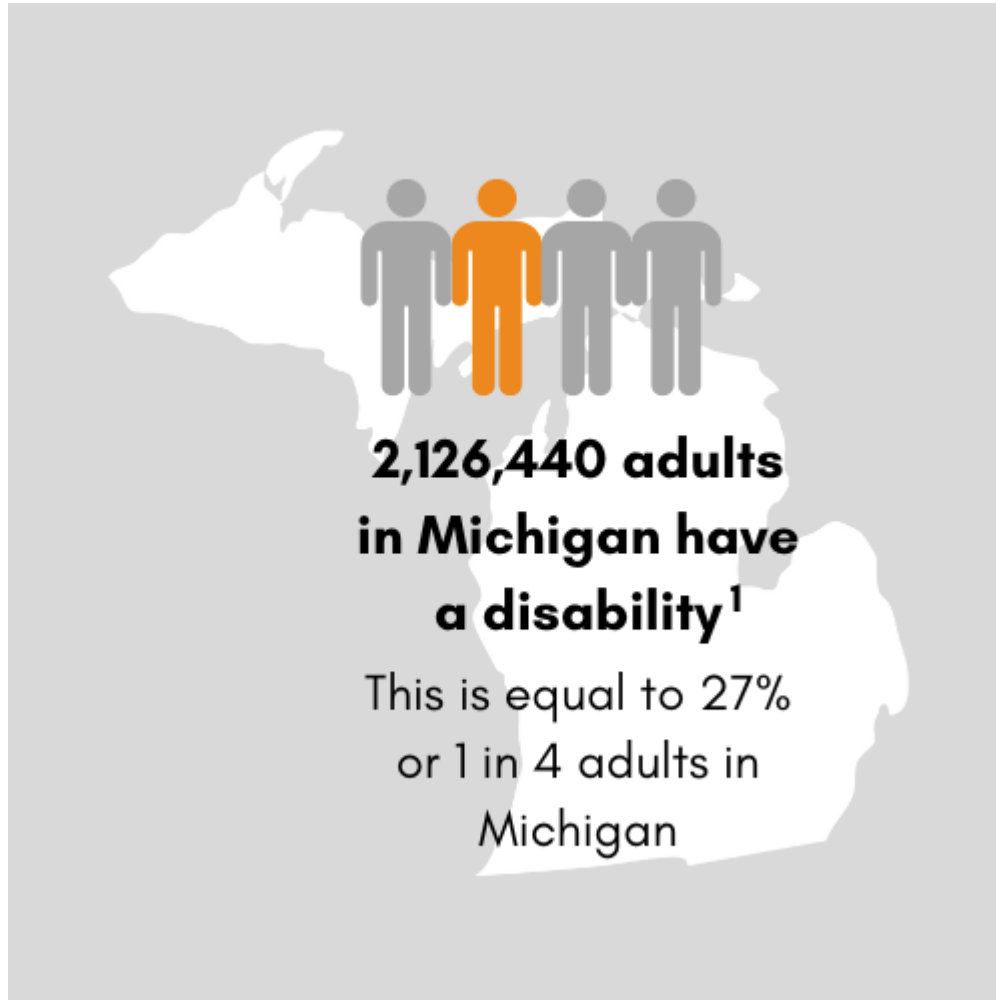
- Many CILs have loan closets where an individual can borrow wheelchairs, walkers, etc.

Governor Whitmer's Budget Recommendation Fiscal Year 2026

For Fiscal
Year Ending
Sept. 30, 2026

20	Sec. 11-104. REHABILITATION SERVICES	
21	Full-time equated classified positions.....	671.0
22	Bureau of services for blind persons-116.0 FTE	
23	positions	\$ 32,149,900
24	Centers for independent living	19,718,600

Remember this?



Most underserved CIL service areas:

- Detroit,
- Oakland/Macomb,
- mid-Michigan (12 counties),
- northern Michigan (17 counties),
- Upper Peninsula (15 counties).

CILs FY '26 Funding Request

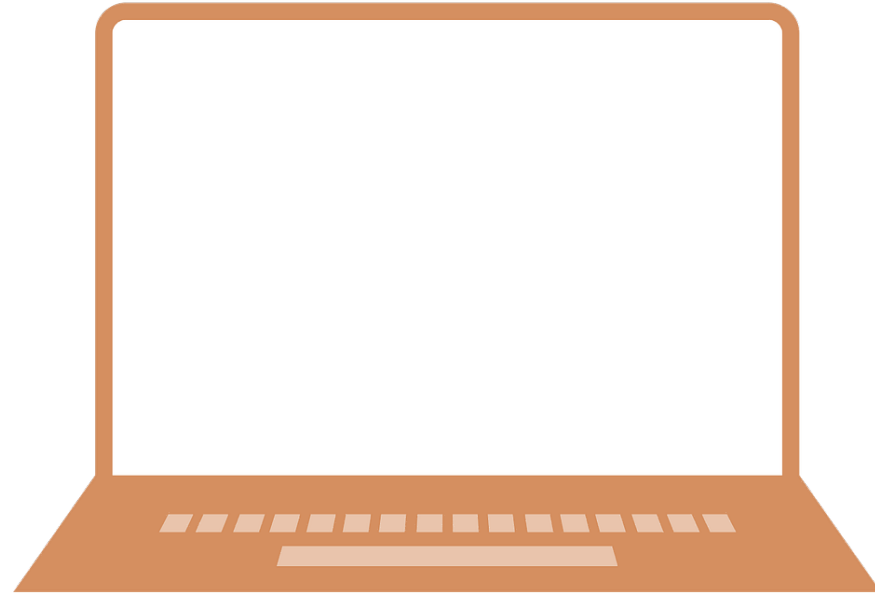
\$6 million above Governor Whitmer's recommendation

Additional funding will help CILs increase outreach, services, capacity

In 2019, the state's Return On Investment (ROI) was \$7

- Remain in homes vs. nursing homes, assisted living
- Employed; contributing to economy

Services and Resources for your constituents



Thank you for your time.



Teri Langley, Executive Director

Email: teri@dnmichigan.org

www.DNMichigan.org