



# Parks and Recreation Division Overview

PRD Chief  
Ron Olson

March 12, 2025





# Presentation Outline

- DNR FY 2025 Budget
- PRD FY 2025 Budget
- State Parks & Recreation Division Overview
- Public Engagement & Partnerships
- Critical Infrastructure Needs







# Parks and Recreation Division Mission Statement

The Parks and Recreation Division's mission is to acquire, protect and preserve the natural and cultural features of Michigan's unique resources, and to provide access to land- and water-based public recreation and educational opportunities.





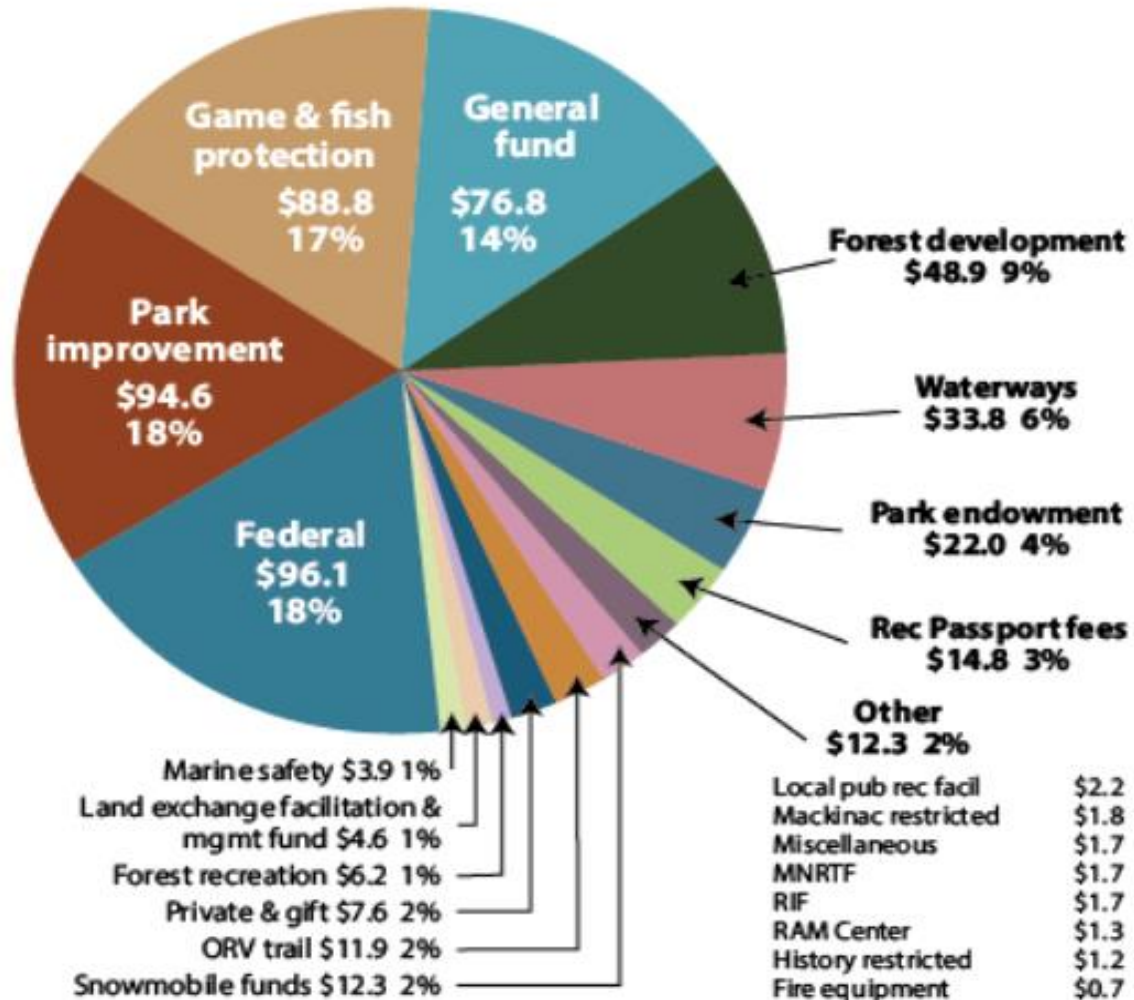
# Economic Impact

- PRD opportunities contribute to the **\$53 billion** tourism industry and the **\$11.7 billion** boating industry.
- DNR/TART Trails Inc. Study
  - Typical non-motorized trail user spends more than \$4,900 annually to support non-motorized hobbies.
- Michigan State University Study
  - Average local spending per site - \$196 per day
  - Equates to over \$254M for 1.3M camp nights





# FY 2025 DNR Budget By Funding Source



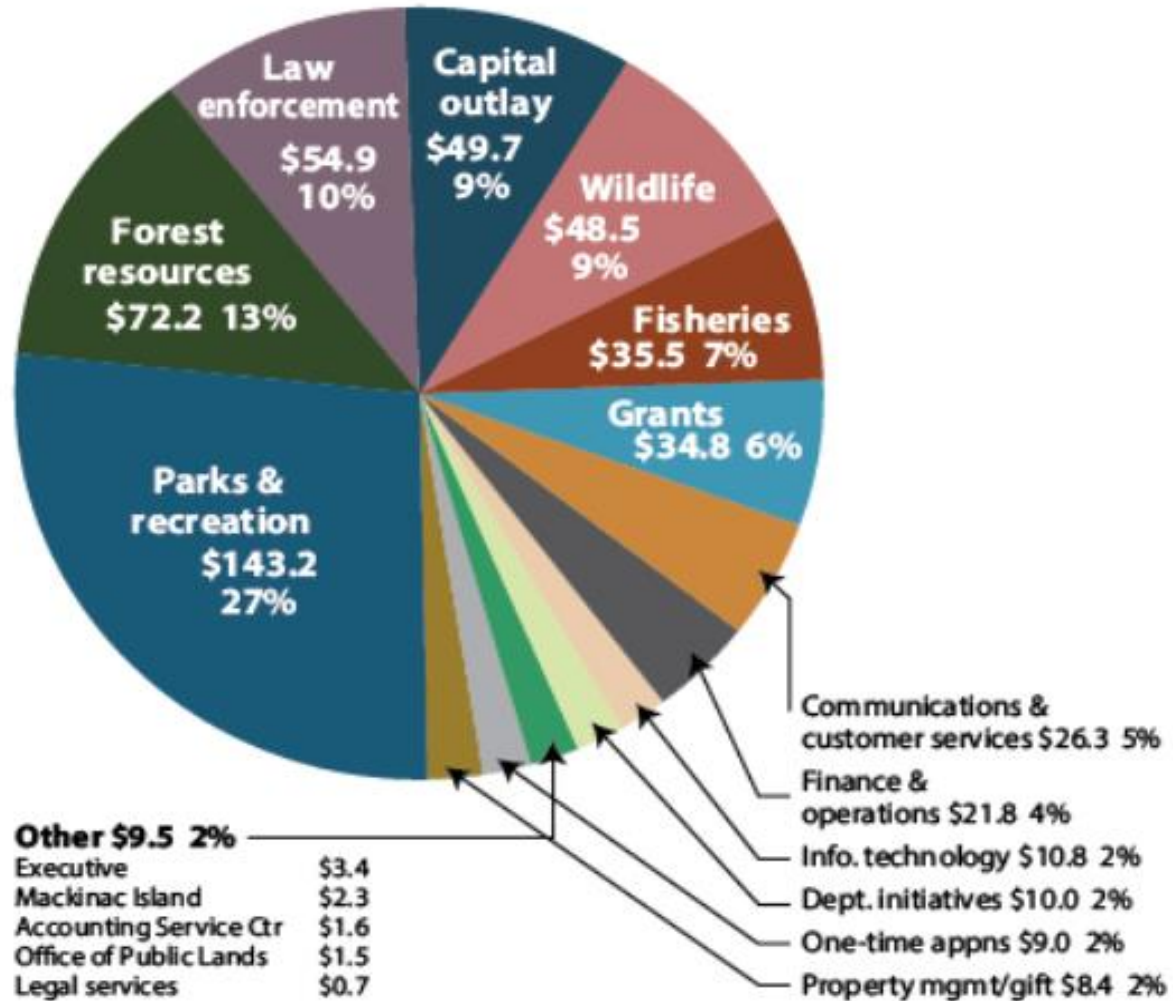
\*NOTE: figures in millions

**Total appropriation: \$534.6 \***





# FY 2025 DNR Budget Appropriation Summary

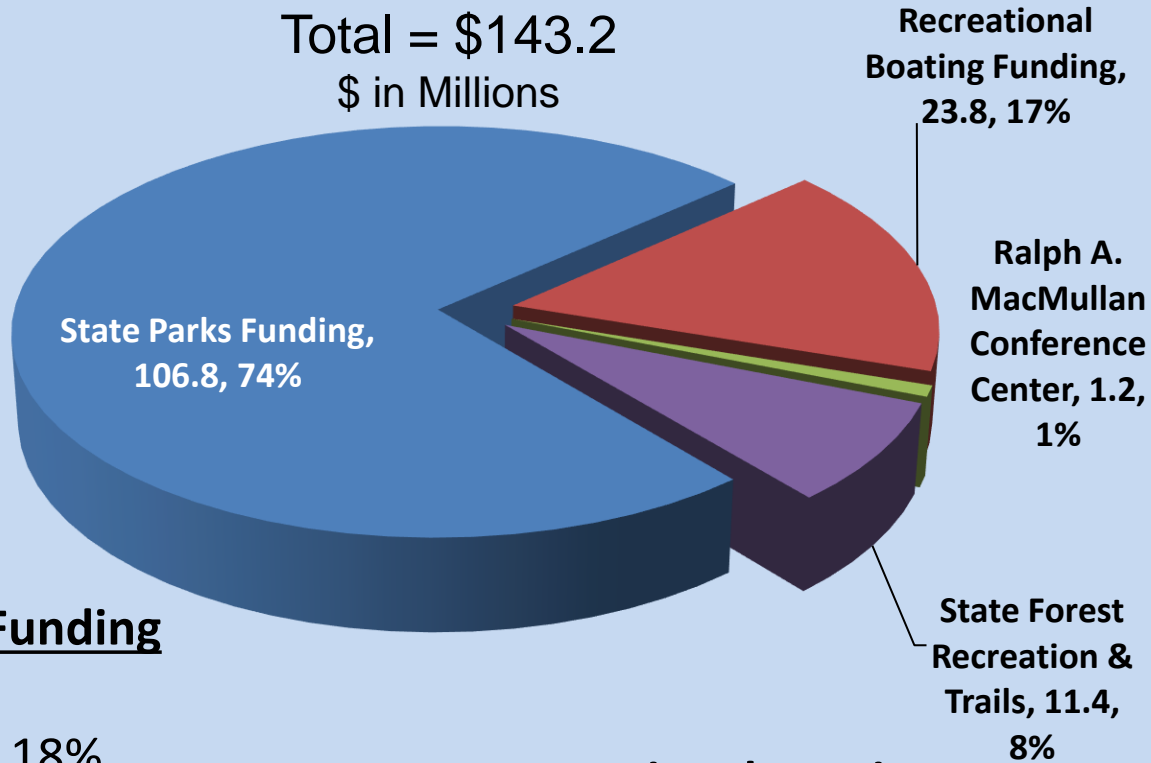


\*NOTE: figures in millions      **Total appropriation: \$534.6 \***



# PRD FY 2025 Operating Appropriations

Total = \$143.2  
\$ in Millions



## State Parks\*

- Park Improvement Fund – 80%
- Park Endowment Fund – 11%
- General Fund – 7%
- Others – 2%

## State Forest Recreation & Trails Funding

- Forest Recreation – 52%
- Snowmobile Trail Improvement – 18%
- Off-Road Vehicle Trail Improvement – 18%
- General Fund (used for non-motorized) – 7%
- Recreation Improvement – 5%

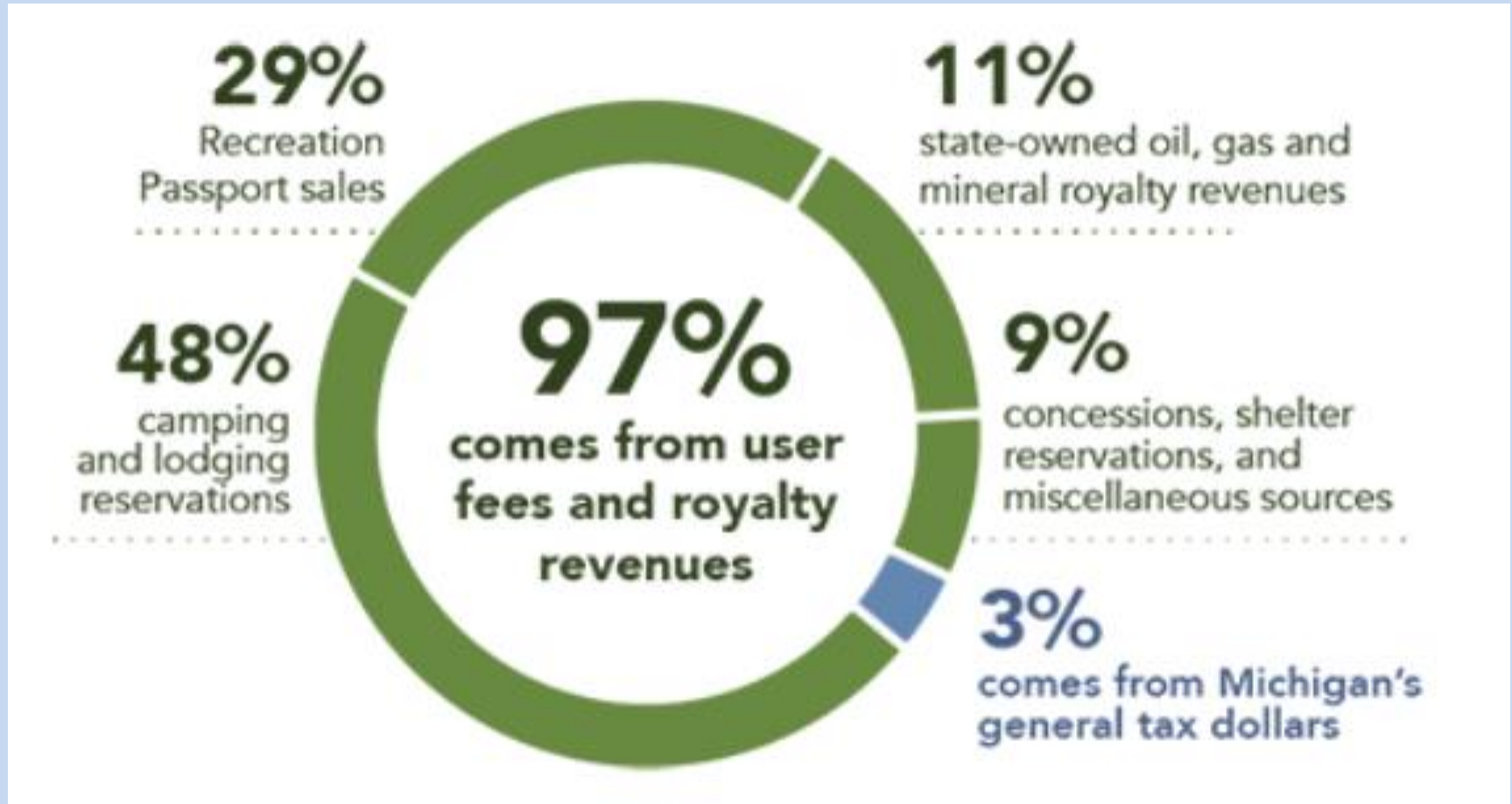
## Recreational Boating

- Waterways – 93%
- Federal – 7%

\*Note: \$2.13 million of State Parks funding is allocated to Mackinac State Historic Parks



# State Park Operating Funding Sources



*Note: 3% in general funds does not include the SYEP or Nature Awaits Program.*





# Recreation Passport Participation Growth





# PRD FY 2025 Capital Outlay & Grant Appropriations

Total = \$52.5  
\$ in Millions

## State Parks

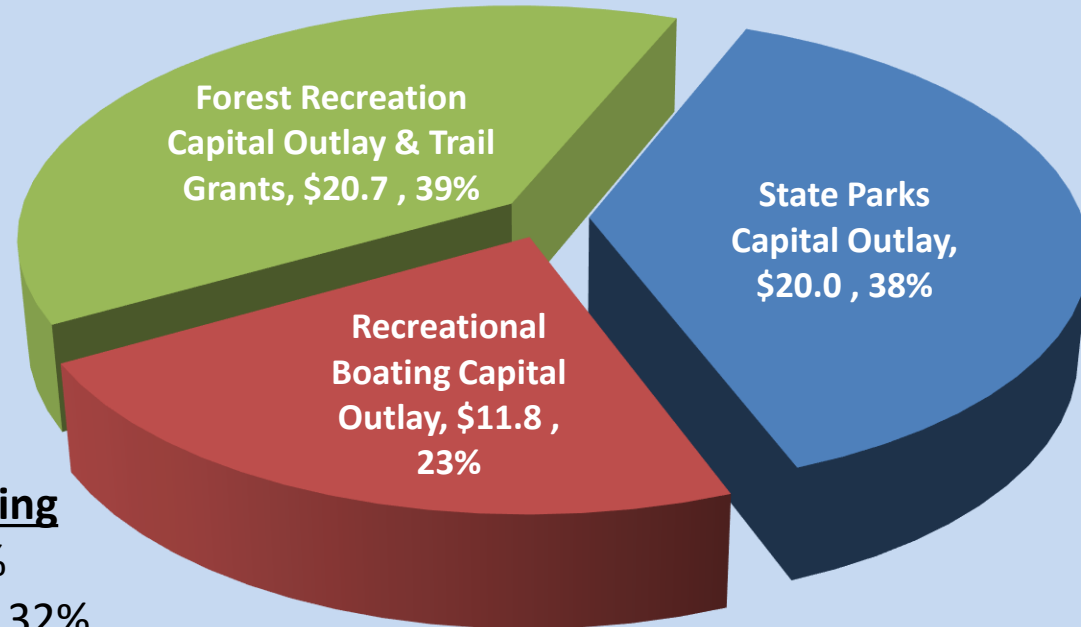
- Recreation Passport Fees – 70%
- Park Endowment – 23%
- General Fund – 7%

## Recreational Boating

- Michigan State Waterways – 85%
- Federal – 15%

## State Forest Recreation & Trails Funding

- Snowmobile Trail Improvement – 39%
- Off-Road Vehicle Trail Improvement – 32%
- Federal National Recreation Trails – 19%
- Snowmobile Trail Easement – 3%
- Recreation Improvement – 4%
- Others – 3%



## Other Grant Leveraging Sources

- Federal Emergency Management Agency
- Land and Water Conservation Fund
- Michigan Natural Resources Trust Fund



# State Park & Recreation Division Overview



- 103 diverse state parks, and recreation areas
- 140 state forest campgrounds
- 19 state-owned harbors and 63 grant-in-aid harbors
- 1,228 public boating access sites, of which, 1,045 are administered by the DNR and 183 by grant-in-aid partnerships
- 13,704 miles of designated motorized and non-motorized trails
- 360,000 acres managed for outdoor recreation





# State Park & Recreation Division Overview



- Hosted approximately 38 million state park visitors in 2023, an increase of 43% from 2019
- Over 1.3 million camp nights in 2023 (1.4 million record set in 2021), an increase of 14% from 2019
- Over 42,000 harbor nights in 2023, an increase of 61% from 2019



# State Park & Recreation Division Overview



- 308,072 ORV licenses purchased in 2024, an increase of 24% from 2019
- 262,236 ORV trail permits purchased in 2024, an increase of 33% from 2019
- 117,280 snowmobile trail permits purchased through January 2025, an increase of 27% from 2024.
- 111 ORV and snowmobile clubs and sponsors





# State Park & Recreation Division Overview



- Outdoor Adventure Center
- Ralph A. MacMullan Conference Center
- Porcupine Mountains Winter Sports Complex







# State Park & Recreation Division Overview

- Staffing
  - Over 700 career positions
    - Rangers – commissioned and non-commissioned
    - Equipment Operators
    - Janitors
    - Trades Helpers
    - Engineers
    - Cooks
    - Park Supervisors and Managers
    - Park Interpreters
    - Accounting and Finance
    - Human Resources
  - Over 1,300 non-career positions
    - Summer Park Workers
    - Michigan Civilian Conservation Corps
    - Students





# Stewardship

- Prescribed Burns
  - 23 state park burns in 2024 to help maintain ecological integrity
- Hemlock Woolly Adelgid (HWA) Control
  - 7,500 acres threatened in 11 state parks
  - \$1M spent on HWA control since 2017
  - 80k trees saved since 2017

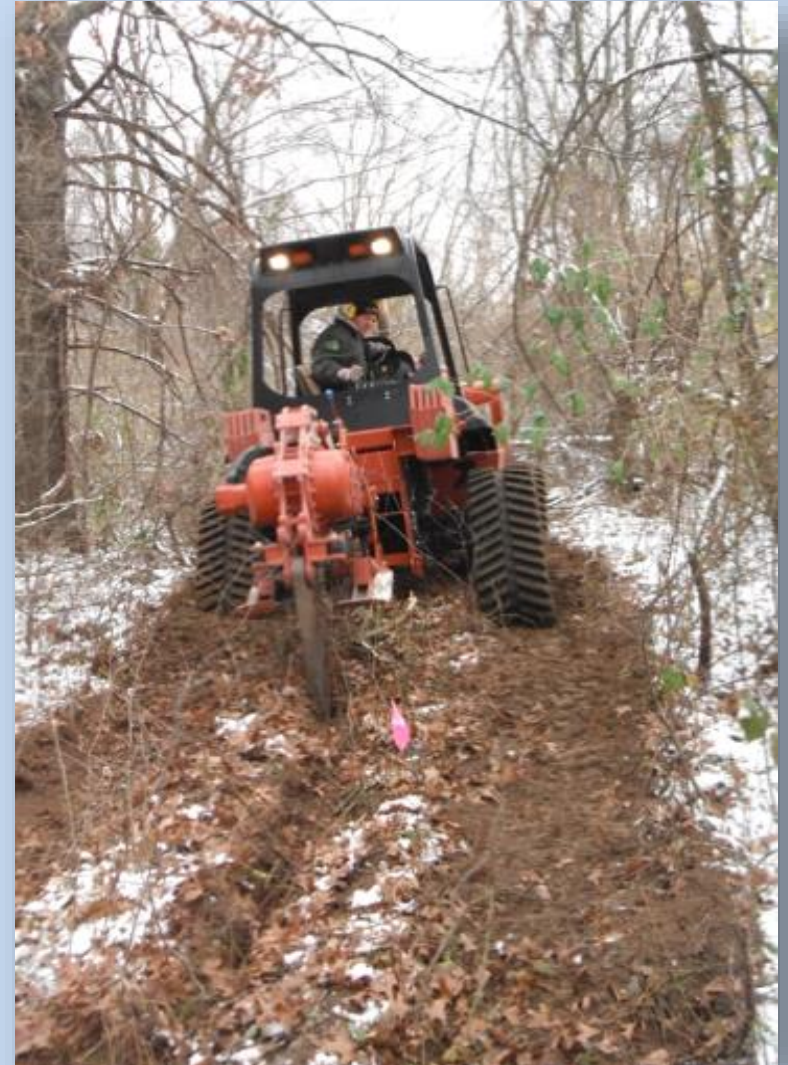






# Stewardship

- 2024 Oak Wilt Management
  - 1,700 acres surveyed
  - 120 acres managed
  - 13 state parks







# State Parks and Recreation Accessibility

Accessible walkways, Kayak launches, playgrounds, and motorized track chairs for trail exploration.





# Operational Efficiencies – Green Initiatives Team



EV Fleet

- Solar energy averages 50% electrical use offset in campgrounds
- 52 EV charging stations in 24 Parks
- 75% conversion of gas equipment to battery power



Battery Powered Equipment



Car Charging Stations





# 2024 Michigan State Parks Camper Survey



**97%**

would recommend  
to a friend



91% satisfied with  
overall camping  
experience

94% booked  
online



89% satisfied with  
overall camping  
value

Although almost  
all respondents  
had camped  
before, 44% were  
visiting that state  
park for the first  
time.

2024 camper survey





# 2024 Michigan State Harbor Customer Survey



**93%** would recommend to a friend.

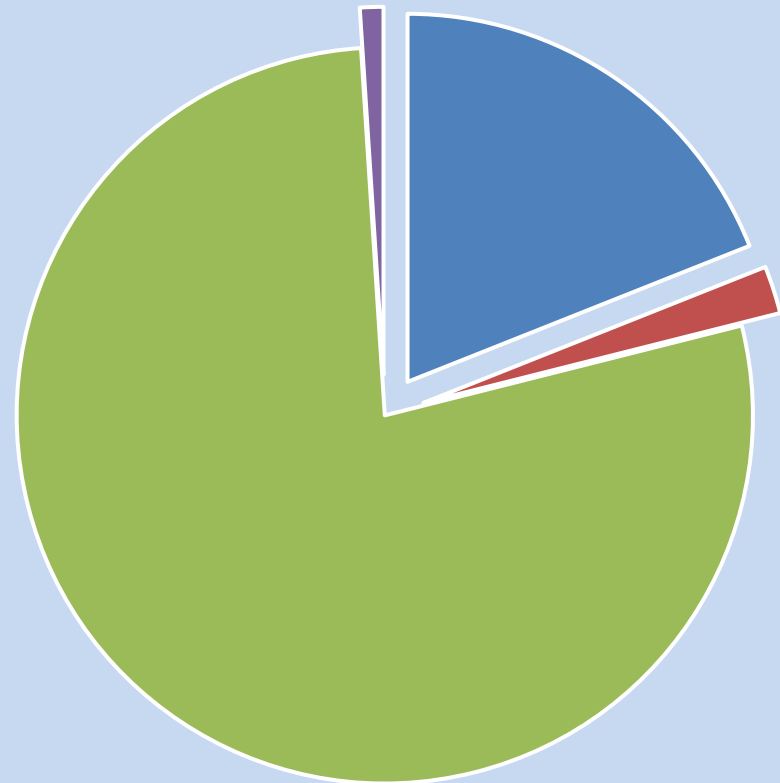


**72%** reserved online while 17% called the marina directly and 7% reserved upon arrival.



**80%** visited local retailers, wineries, breweries and restaurants making it the #1 activity for harbor users.

## Boat Type



■ Sailboats     ■ Pontoons  
■ Powerboats   ■ Other



# Public Engagement

- State Park Friends Groups
  - 55 active groups generate an estimated value of more than \$8 million in services annually.
- Campground Hosts
  - Each volunteer host provides a minimum of 30 service hours per week.
- Advisory Committees
  - Michigan State Parks Advisory Committee
  - Michigan Trails Advisory Council
    - Equine Trails Subcommittee
    - Nonmotorized Advisory Workgroup
    - Off-road Vehicle Advisory Workgroup
    - Snowmobile Advisory Workgroup
  - Belle Isle Park Advisory Committee
  - Michigan State Waterways Commission





# Partnerships

- Sponsorships
  - Continuing to seek in-kind and monetary donations to support specific places, projects and programs.
- Individual Giving
  - Campers and boaters may donate \$2 when making reservations, generating over \$180k annually.
  - Gifts through memorial and other donations.
- [Goods4MI.com](http://Goods4MI.com)







# Partnerships – Happy Little Trees

- Rebranded the “Prison Grow” tree replacement program to “Happy Little Trees” in partnership with the Bob Ross Organization to allow for replacement of trees impacted by invasive species (e.g. oak wilt and hemlock woolly adelgid).
  - 77k participants since its inception in 2019.
  - \$939k in revenue for natural resource stewardship.
  - \$70k in additional revenue from donations.
  - 13 other states now participate in the program.





# Partnerships – National Guard

- The National Guard has collaborated with the DNR for over two decades.
- Partnership has helped elevate the quality of state park facilities and enhance the mission readiness of the Guard as part of the Department of Defense Innovative Readiness Training (IRT) program.
- As of 2023, the 107th Engineer Battalion IRT initiative has saved the state of Michigan an estimated \$1.8 million in labor costs.
- Over the past four years, National Guard members and the DNR have partnered to upgrade facilities at four state parks and nine recreation areas.







# Partnerships – Alternative Lodging

- Partnership with ExplorUS:
  - Lodging options include mini cabins, camper cabins, yurts, tiny houses, and lodges.
  - Investment: \$1.08 million
  - Revenue: +\$500,000
  - 95% Occupancy  
(June –Sept)
  - New cabins will be installed at South Higgins in 2025

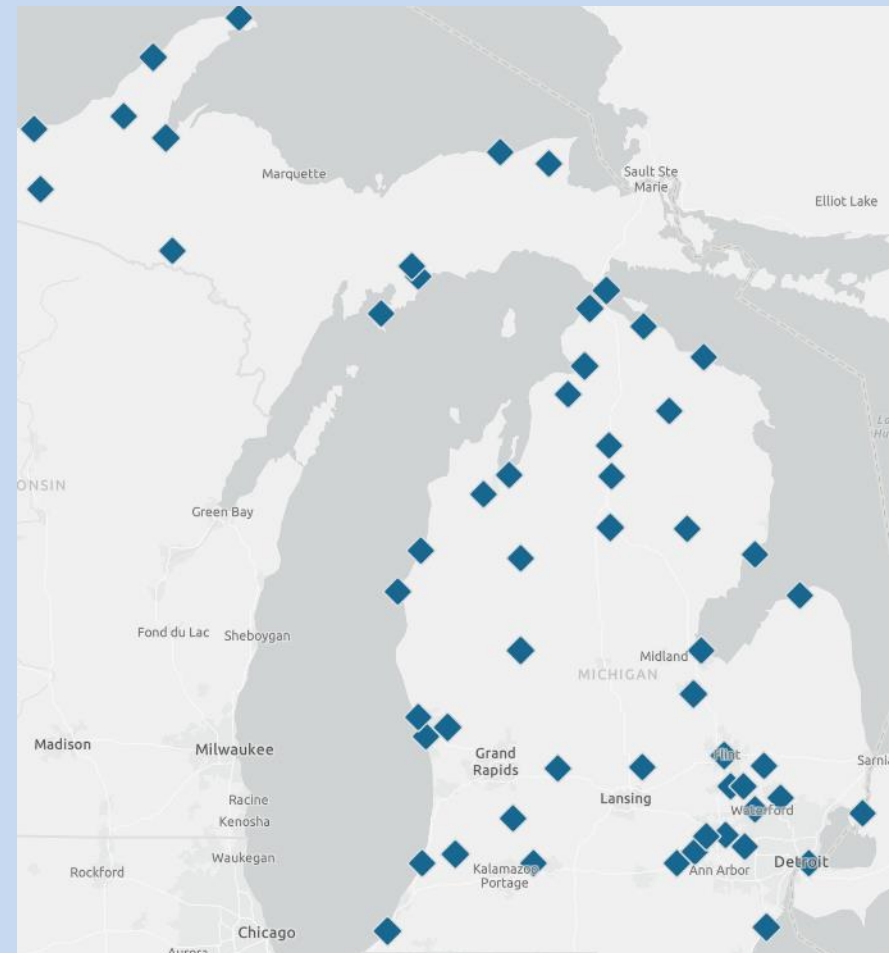






# American Rescue Plan Act Modernization of State Parks

- \$273 million in federal funding to help address the backlog of critical infrastructure needs in state parks:
  - \$219.8 million for critical infrastructure needs throughout State Park System.
  - \$30.2 million for development of a state park in Genesee County.
  - \$23 million for critical infrastructure needs at Belle Isle Park.
- Projects include replacement and repair of buildings, roads, parking lots, recreational and historical structures, and utilities.





# Critical Infrastructure Needs

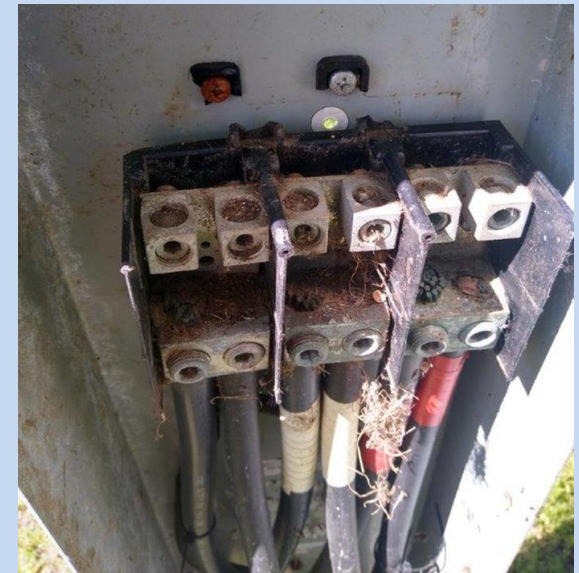
System	Total Estimated Projects	Total Estimated Cost
State Parks	457	\$256.3 million
State-designated trails	99	\$115.5 million
State Waterways	<u>142</u>	<u>\$100.0 million</u>
<b>Total</b>	<b>698</b>	<b>\$471.8 million</b>







# Critical Infrastructure Needs







# Questions?

Learn more about outdoor recreation opportunities at [Michigan.gov/DNR](https://Michigan.gov/DNR).