



MICHIGAN DEPARTMENT OF  
ENVIRONMENT, GREAT LAKES, AND ENERGY

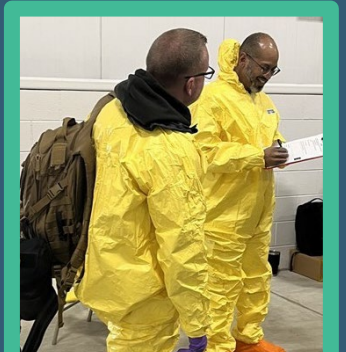
# Materials Management Division

---

Tracy Kecskemeti, Acting Director

# Materials Management Division

Mission: Protect Michigan's Environment & Promote A Sustainable Economy



**EGLE**

# Program Overview

---

## Waste

Hazardous  
Waste

Solid Waste &  
Scrap Tires

Materials  
Utilization

## Sustainability

Recycling &  
Planning

Pollution  
Prevention

Energy

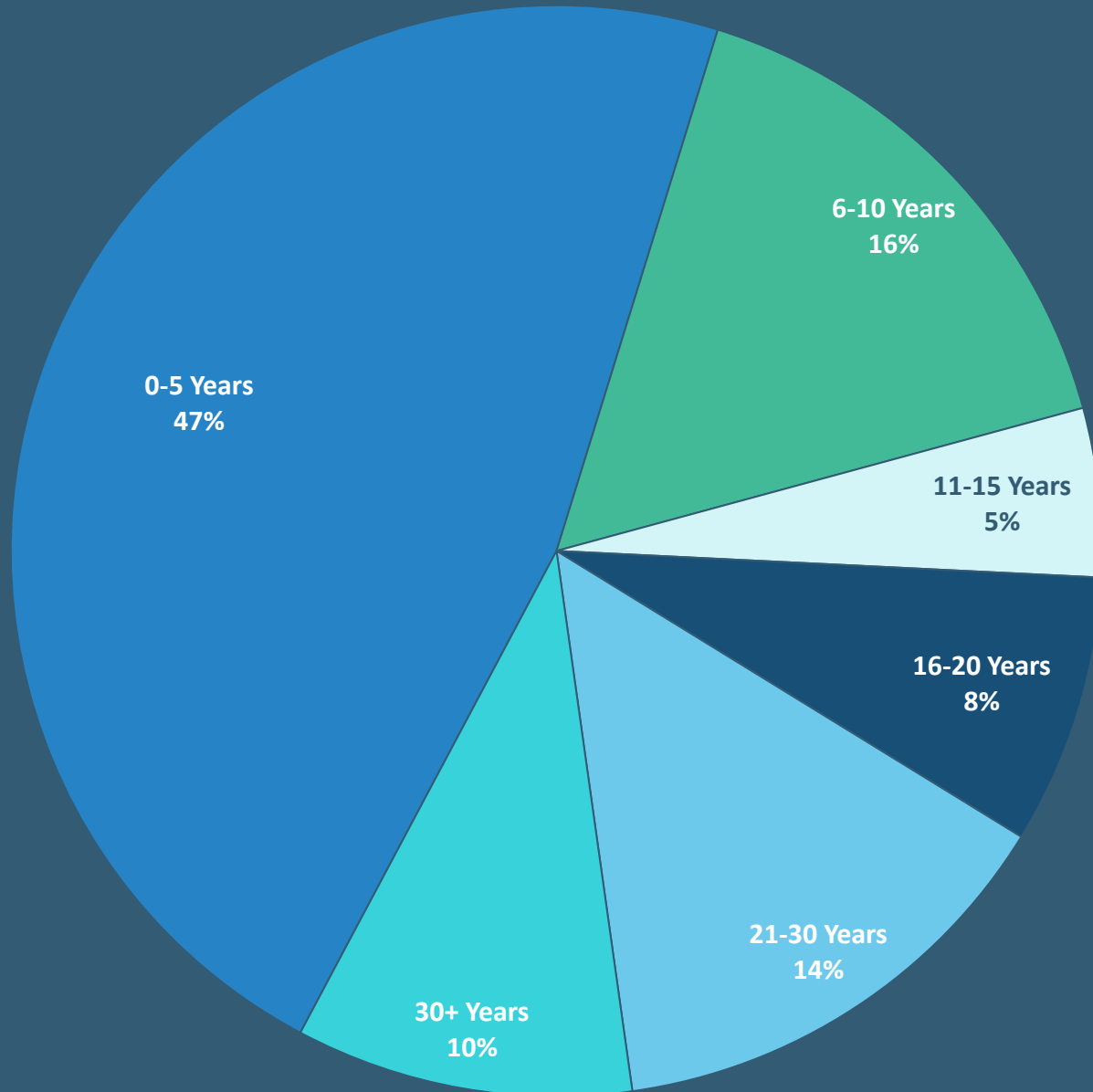
## Radiological Protection

Emergency  
Preparedness

Radiological  
Materials

Indoor  
Radon

## Staff – Years Of Service



# 154 Staff

Engineers

Geologists

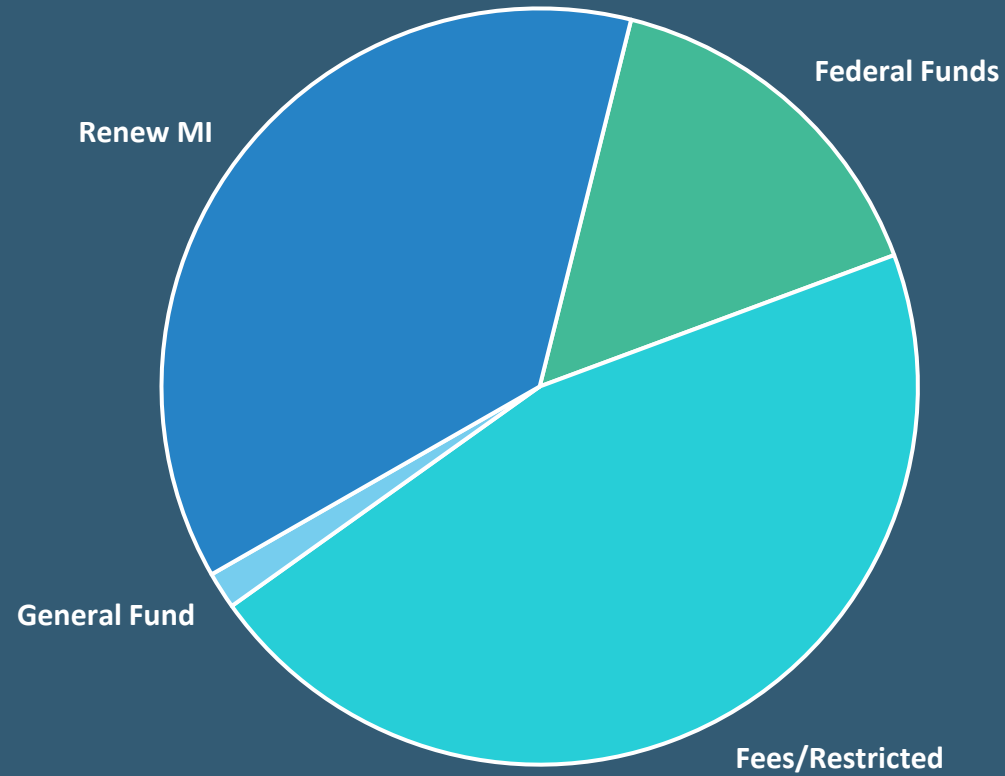
Physicists

Inspectors

Grant Administrators

Managers & Administration

# FY 2025 Budget



---

In FY 2024, 52% Of The Materials Management Division's Spending Went Out The Door As Grants To Local Communities & Organizations



Hazardous Waste



Solid Waste



Materials Utilization

## Waste Programs



# Hazardous Waste Management

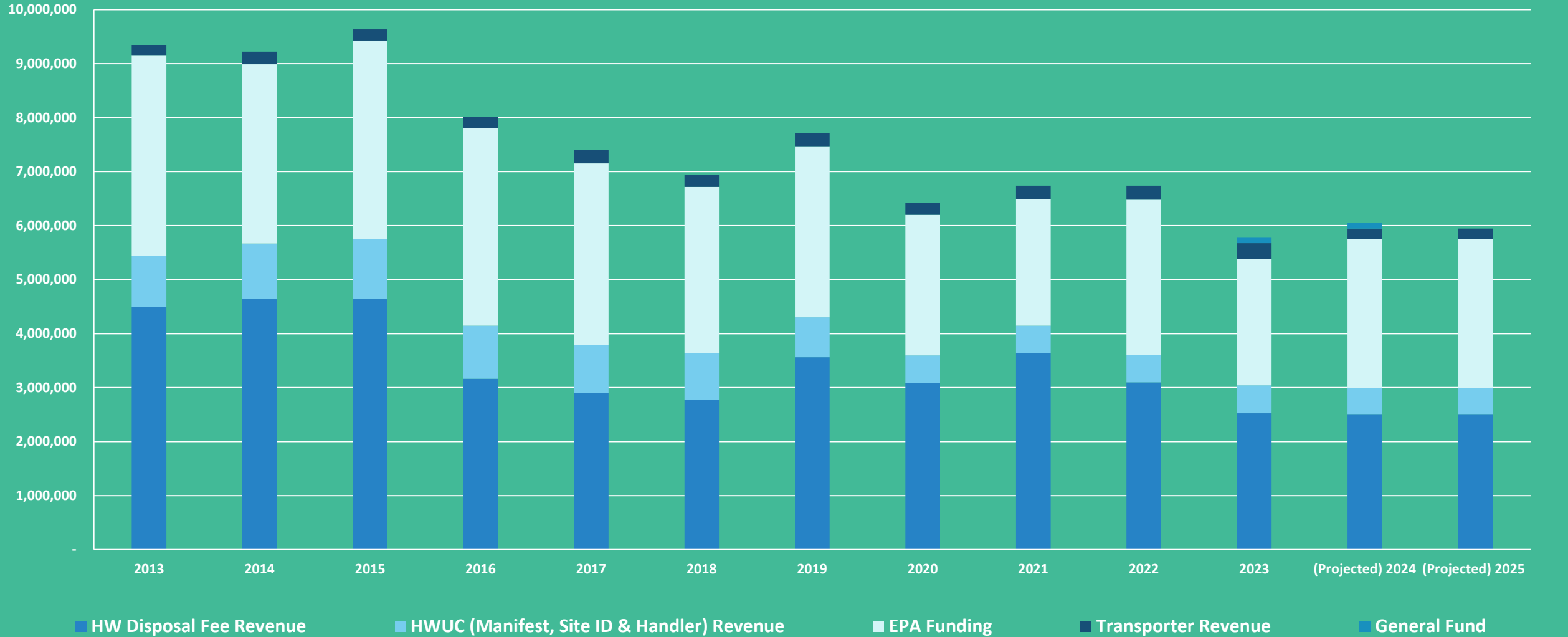
Federally Delegated

Cradle To Grave Waste Management

Generators, Transporters, Treatment/Disposal

Inspectors, Permitting, Corrective Action





# Hazardous Waste Program Funding



# Solid Waste Management



Solid Waste Disposal



Scrap Tires



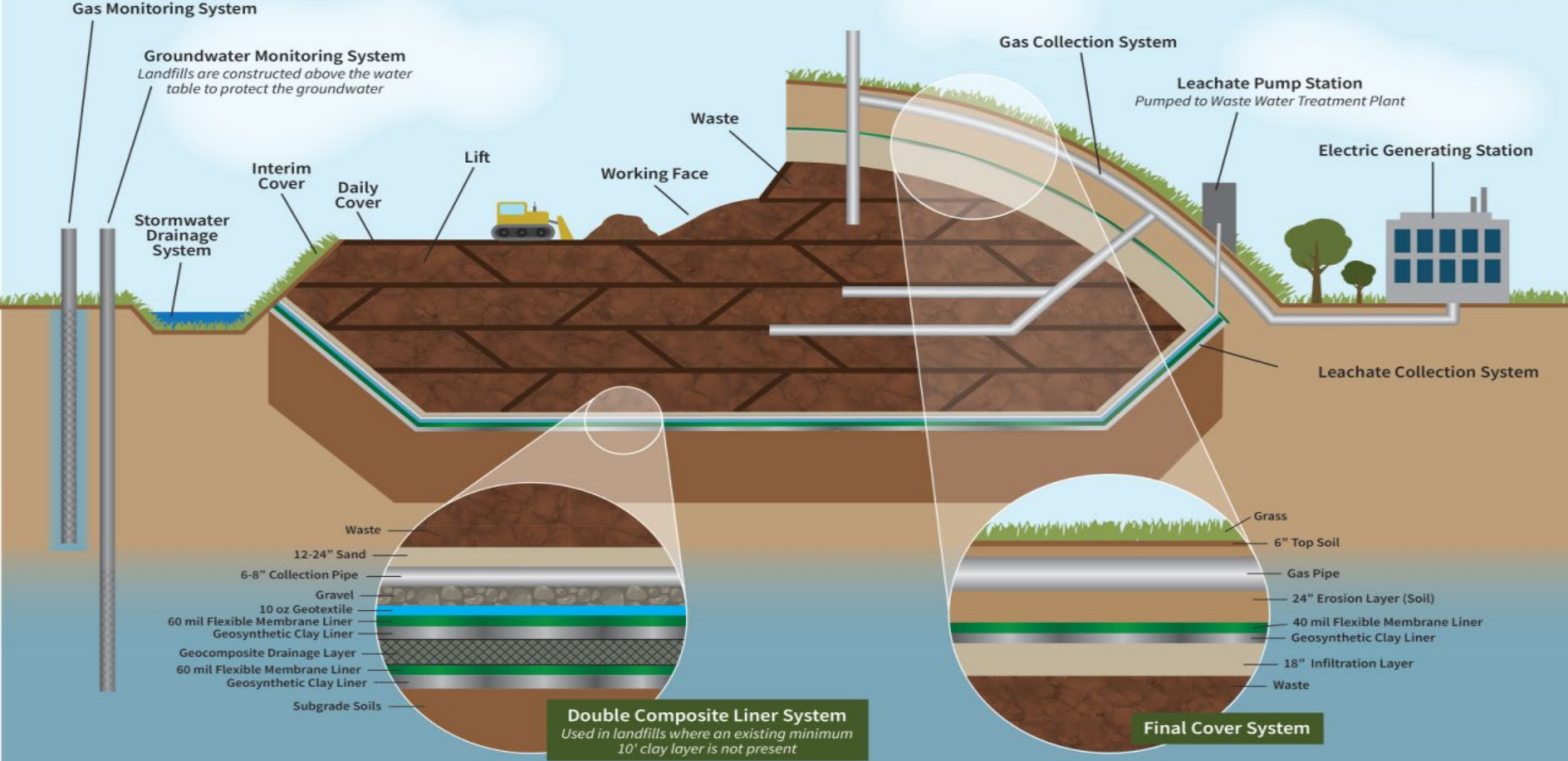
Medical Waste



Electronic Waste

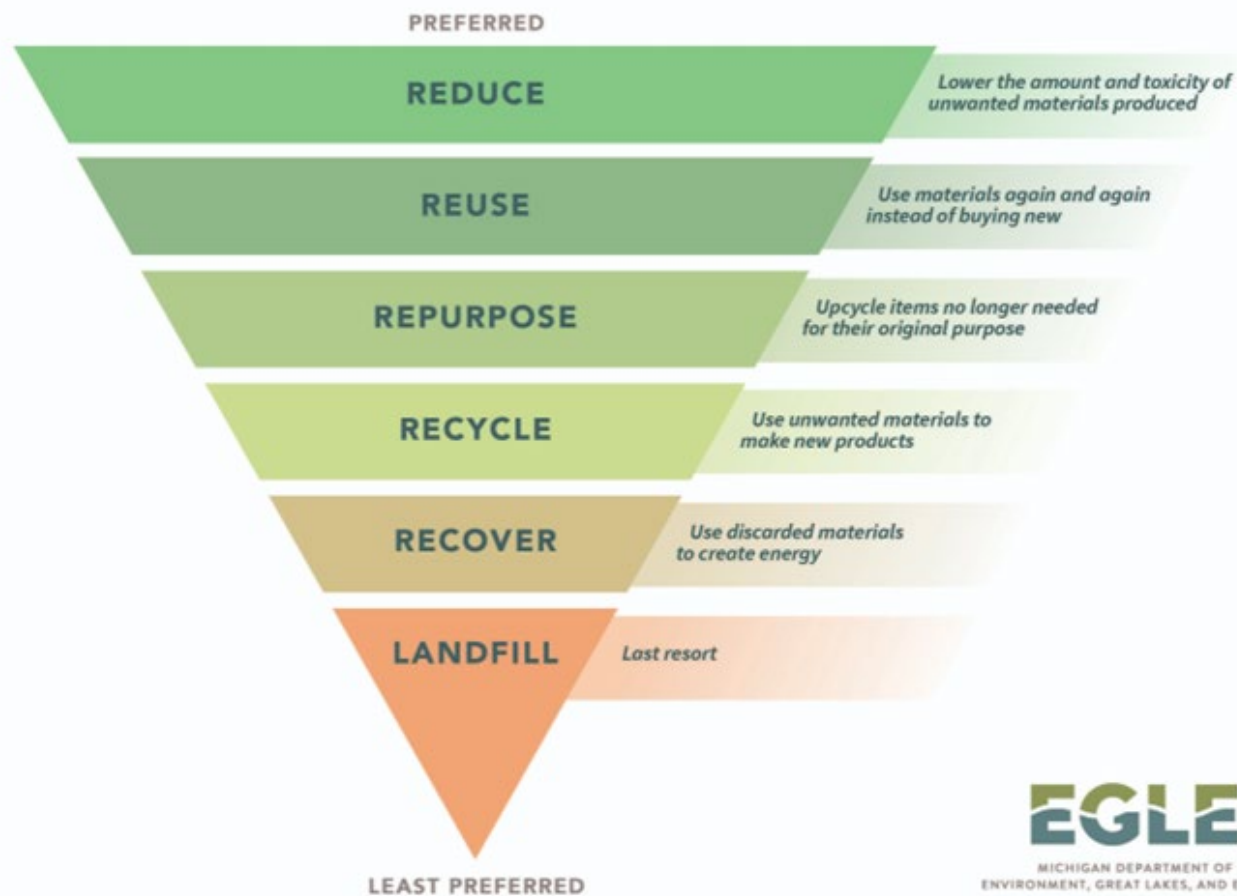


# Cross Section of a Solid Waste Landfill Cell





# SUSTAINABLE MATERIALS MANAGEMENT



**EGLE**

MICHIGAN DEPARTMENT OF  
ENVIRONMENT, GREAT LAKES, AND ENERGY

Michigan.gov/EGLE | 800-662-9278

## Part 115 Amendments of 2022

Transition:

Waste Disposal



Holistic Materials  
Management

# Materials Utilization Facilities



Composting  
Facilities



Material  
Recovery  
Facilities



Anaerobic  
Digesters



Innovative  
Technology  
Facilities







Recycling & Planning



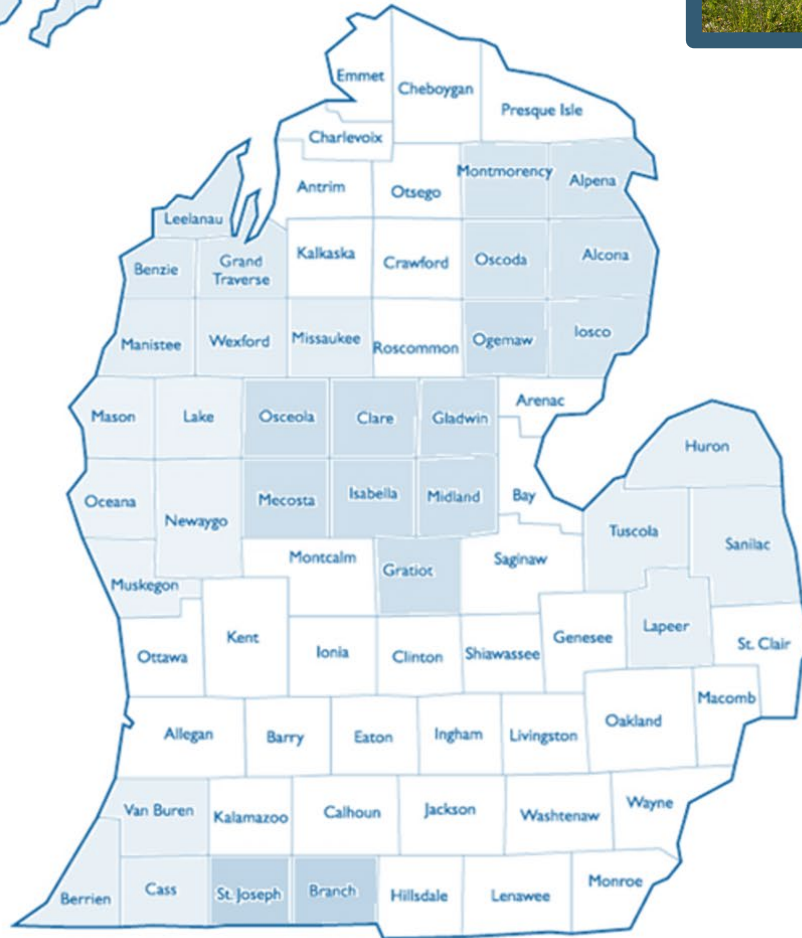
Pollution Prevention



Energy

# Sustainability

# Materials Management Planning



# Recycling

## Grants

- Infrastructure
- Circular Economy
- Education
- E-Waste & Scrap Tires

## Technical Assistance

- 10 EGLE Recycling Staff

## Measuring Progress

# RULES OF RECYCLING



Plastics, glass and metal:  
rinsed and dry



Cardboard:  
Break it down flat



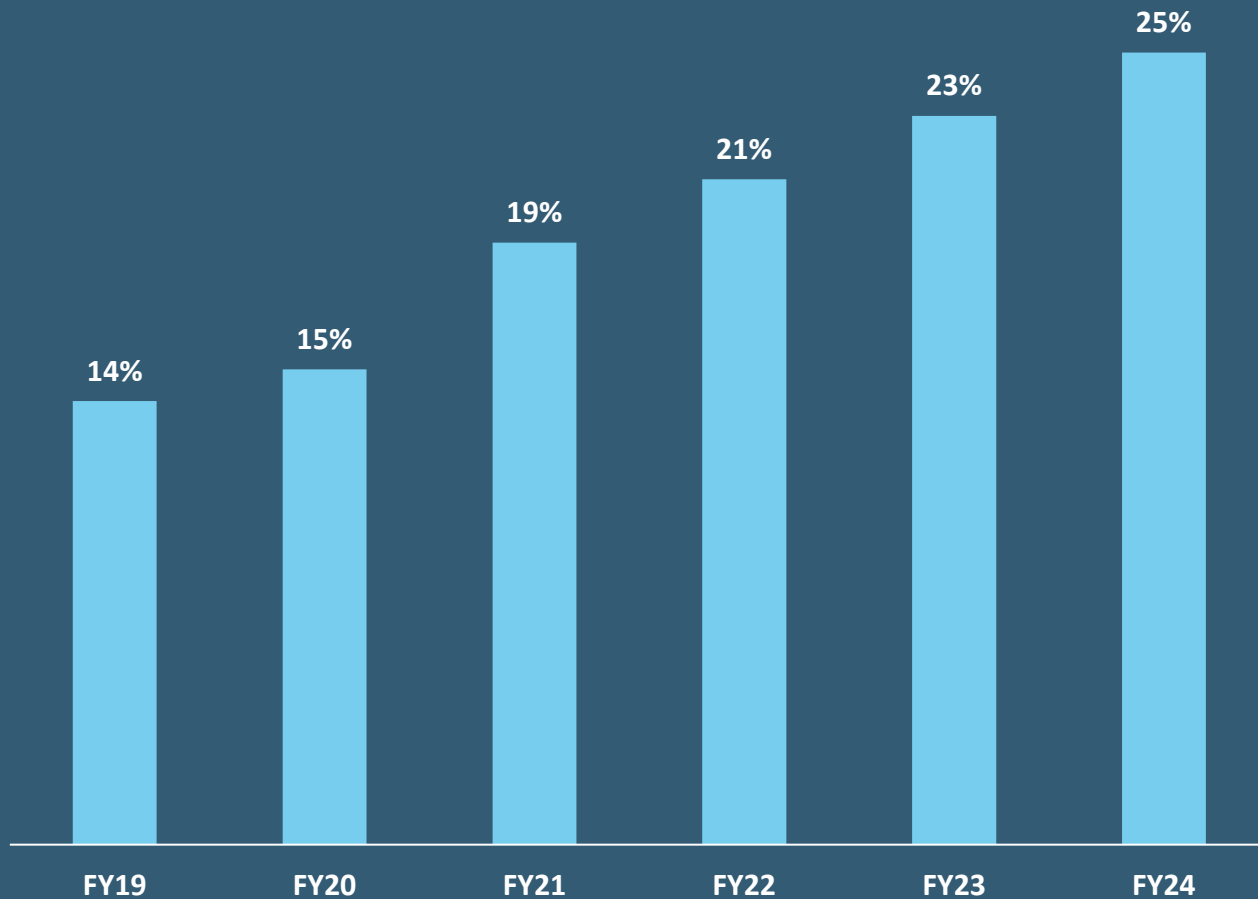
No recyclables  
in plastic bags



**EGLE**



## Recycling Rate



Steady  
Progress on  
Recycling



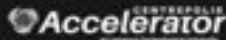


NEXTCYCLE  
MICHIGAN

BUILDING A  
CIRCULAR ECONOMY

NEXTCYCLEMICHIGAN.COM  
NEXTCYCLEMI@RECYCLE.COM

EGL



## DRIVING A CIRCULAR ECONOMY THROUGH PARTNERSHIP & INNOVATION



ACCELERATOR  
PLATFORM

**171 Teams and Projects**  
since launch in 2020

Nearly \$200k  
in showcase awards.  
\$860k in Harvest and  
MICROS grants.



PARTNERSHIP  
NETWORK

**138 Partners** engaged  
in the Network and  
growing.

**\$692M tracked  
investment** for circular  
economy solutions



DATA GUIDING  
OPPORTUNITIES

**2019, 2021 and 2023  
Gap Analysis Updates**  
evaluating the state of  
recycling in Michigan  
and opportunities for  
solutions.

# Pollution Prevention Programs

---

Excess Food Reduction Implementation

Organics Diversion

Michigan Green Communities

# Energy Programs

---

## Communities

- Community Energy Management
- Water Energy Nexus
- Home Energy Rebates

## Industry

- Agriculture & Rural Businesses
- Small Manufacturer Retooling

## Domestic Energy Supply

- Renewable Ready Communities
- Community Solar

## Infrastructure

- Clean Fuels & EV Infrastructure
- Grid Resiliency

## Clean Energy Workforce

- Training
- Events





Emergency Preparedness



Radiological Materials



Indoor Radon

# Radiological Protection



# Emergency Preparedness



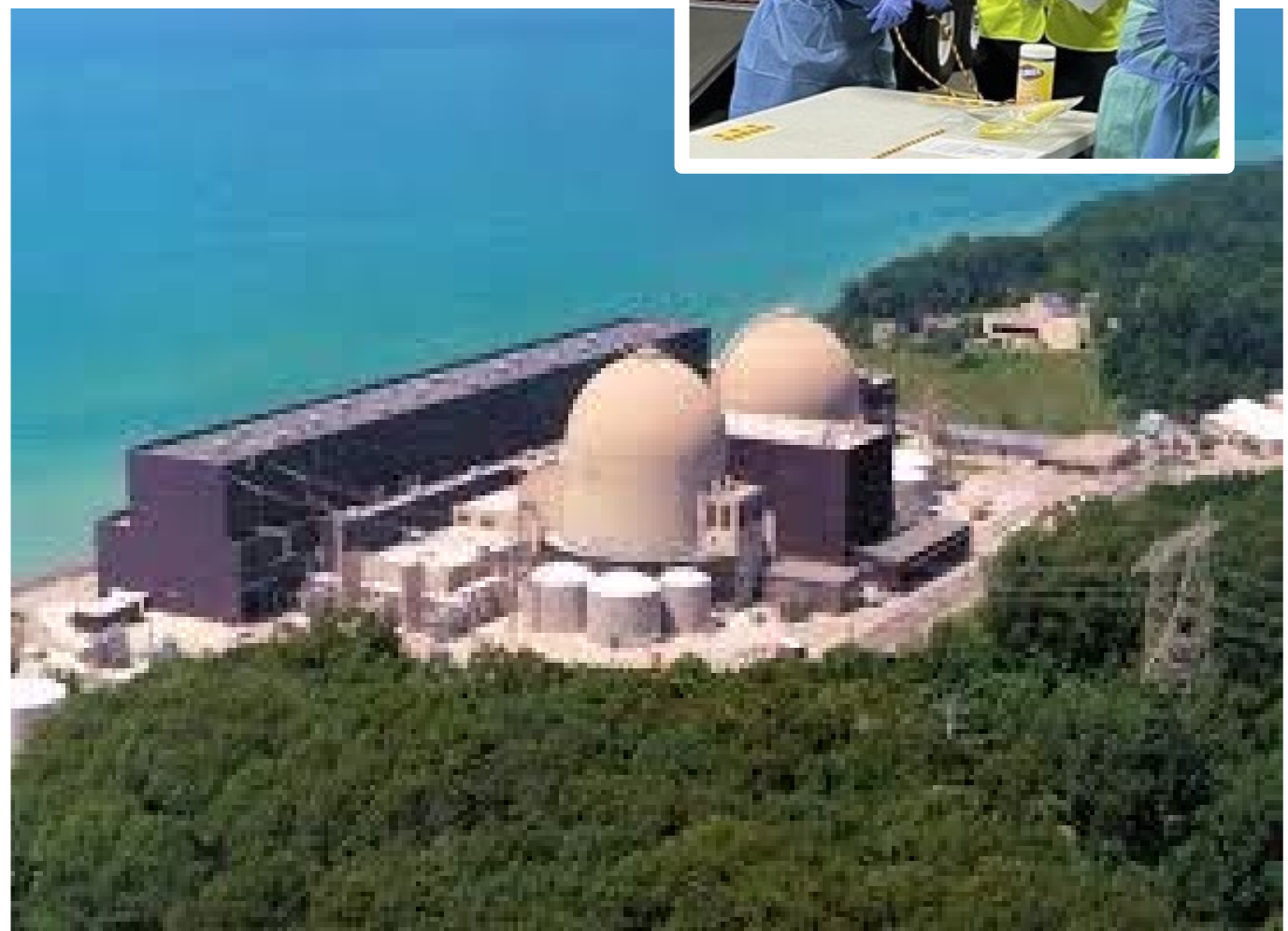
EGLE + MSP + Counties  
Simulate Radioactive  
Emergencies



EGLE Does Not Have  
Regulatory Authority Over  
Nuclear Power Plants



Monitor Environment  
Around Nuclear Power  
Plants



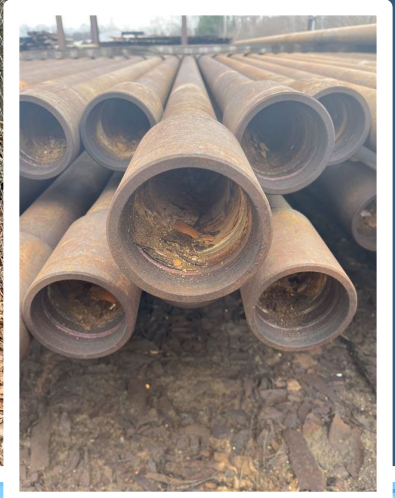
# Radioactive Materials - TENORM



Regulatory Program



Risk Identification



# Indoor Radon



Outreach



Radon Test Kits



Radon Mitigation



# Executive Budget Requests

## Solid Waste Surcharge Or “Tipping Fee” Increase:

- \$80 Million, Ongoing State Restricted Funds
- Promotes Proper Waste Management & Deters Out Of State Trash; Raises Funds For Local Materials Management, Contaminated Site Cleanup & Brownfield Redevelopment; Includes 36 FTEs

## CPRG Renewables Ready Communities:

- \$129.1 Million, Fully Federal Funds, No State Match Required
- Provides Local Units Of Government That Choose To Site Energy Storage Or Renewable Energy Generation Facilities With Grants To Fund Public Safety Projects. Past Grants Have Paid For Road Repairs, Park Improvements, Fire Department Equipment & More

## Energy Programs:

- 2 FTEs





MICHIGAN DEPARTMENT OF  
ENVIRONMENT, GREAT LAKES, AND ENERGY

Thank You

800-662-9278 | [Michigan.gov/EGLE](https://Michigan.gov/EGLE)