



FISCAL SNAPSHOT

MEDICAID REDETERMINATION OUTCOMES

Date: September 2024

Analysts: Kevin Koorstra and Kent Dell

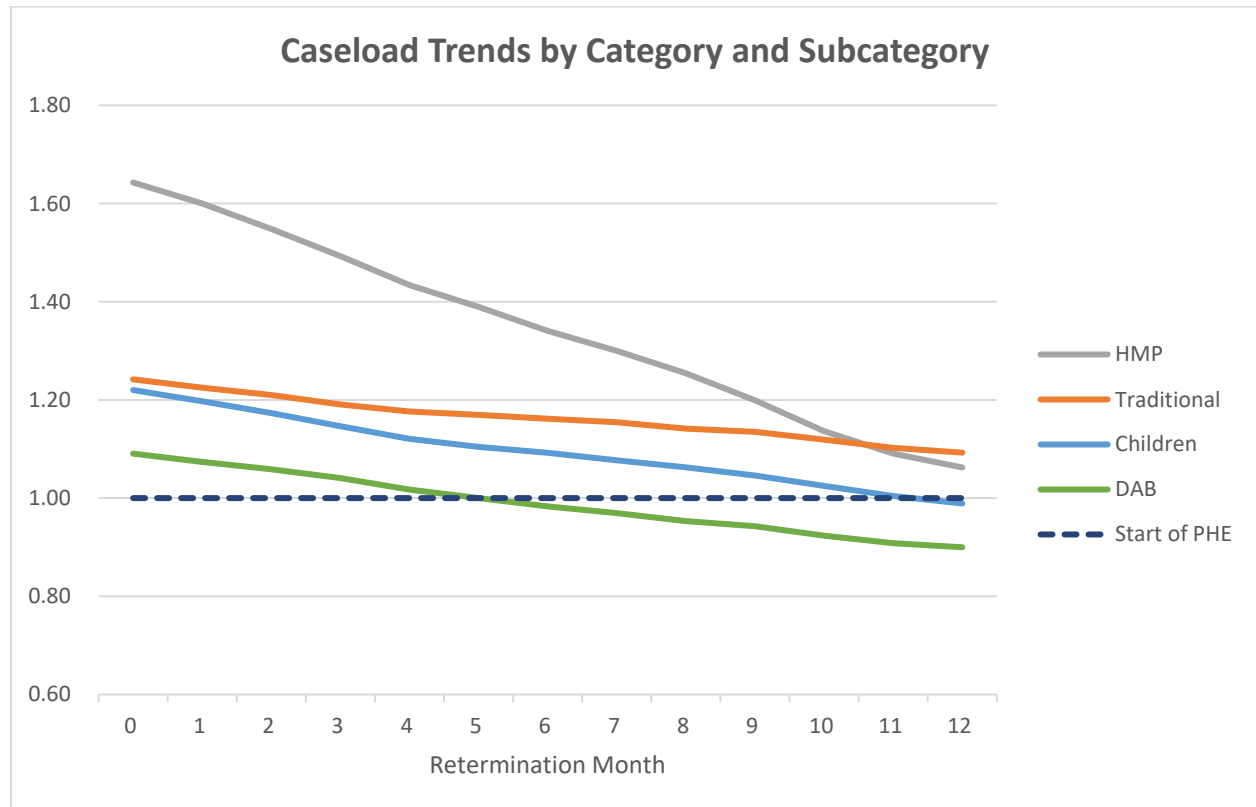
Background

In April 2023, the Michigan Department of Health and Human Services (DHHS) began the process of redetermining Medicaid cases, with the first of the redeterminations occurring in June 2023 and disenrollments beginning in August 2023. DHHS redetermined each Medicaid case within the same calendar month of original enrollment. Therefore, all redeterminations should have been completed over a 12-month period. With the 12 months having been completed by July 2024, the following should provide a complete picture of the outcomes of the redetermination process.

It should be noted that the figures below reflect the net caseload changes, which are different from the redetermination specific outcomes [published by the department](#). The figures below include new cases that have applied and enrolled in the Medicaid program outside of the redetermination process.

Outcome

Through July 2024, the total Medicaid program enrollment is 202,509 cases, or 8.4%, greater than the total enrollment at the outset of the federal COVID-19 public health emergency declaration (PHE). Both Healthy Michigan Plan and Traditional Medicaid cases are above PHE levels. Two subcategories, children and disabled, aged, and blind (DAB), however, have fallen below pre-PHE levels. Caseload trends over the redetermination period have been remarkably linear and did not taper off in the final redetermination months as HFA had initially anticipated. The figures below detail caseload trends during the redetermination period for each Medicaid program.



Indexed to their respective caseload at the start of the public health emergency.

**Cases and Percent Change Since the Start of the Public Health Emergency
by Category and Subcategory**

Category	March 2020 Start of PHE Cases	July 2023 Month before Redetermination		July 2024 End of Redetermination	
		Cases	Difference from Start of PHE	Cases	Difference from Start of PHE
HMP	664,480	1,091,722	64.3%	705,994	6.2%
Traditional	1,738,525	2,159,065	24.2%	1,899,520	9.3%
Children	942,222	1,149,579	22.0%	931,900	(1.1%)
DAB	499,867	545,149	9.1%	449,824	(10.0%)
Total	2,403,005	3,250,787	35.3%	2,605,514	8.4%