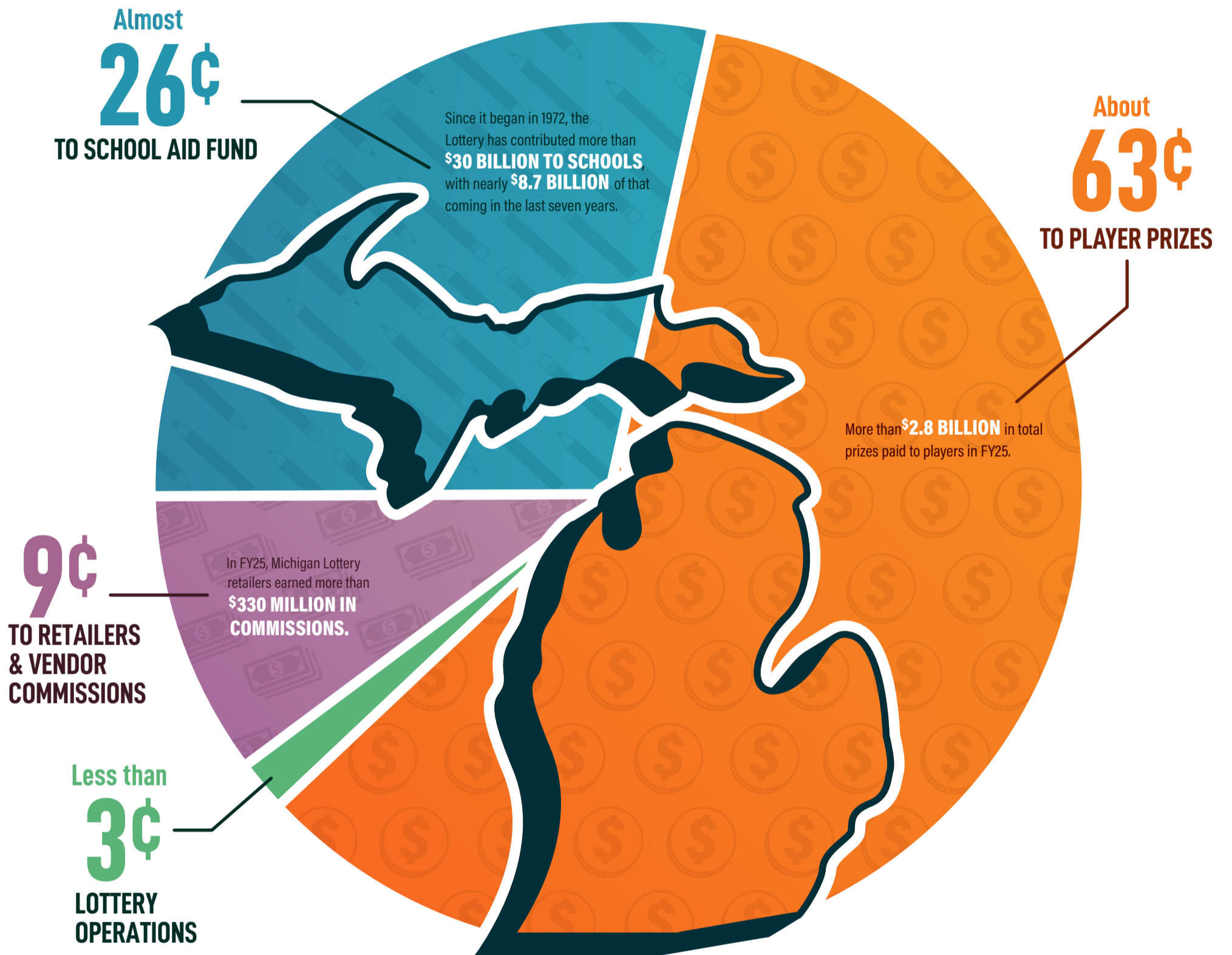




# For fun. For schools.™

Lottery is completely self-funded. No general fund or taxpayer dollars are appropriated.  
Lottery's primary source of revenue is ticket sales.

For every \$1 spent on Lottery, about 63 cents go to prizes, about 26 cents go to the School Aid Fund, 9 cents go to retailer and vendor commissions, and less than 3 cents are used for Lottery operations.



- The Michigan Lottery is self-funded and operates as a business enterprise with the goal of maximizing contributions to the state School Aid Fund.
- The Legislature and Governor are responsible for allocating the School Aid Fund. The Michigan Lottery makes no determination on how the School Aid Fund is spent.
- More than 10,400 retailers sell Lottery games, many of which are small businesses. In the last seven years, retailers have collected more than \$2.3 billion in commissions.
- The Michigan Lottery's contribution to the School Aid Fund is different each year. Fiscal year 2025 was the Lottery's seventh consecutive contribution of more than \$1 billion.
- The Michigan Lottery paid players over \$2.8 billion in prizes in Fiscal Year 2025. Lottery prizes stimulate the Michigan economy.

\*All FY25 numbers are unaudited.