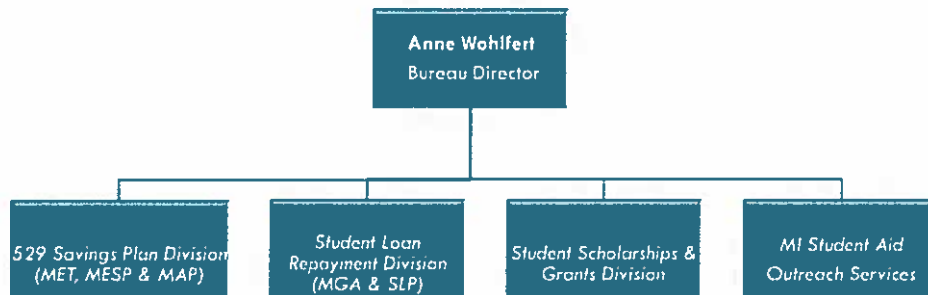




## Organizational Structure



## Student Financial Services Bureau

- The Student Financial Services Bureau (SFSB), located within the Michigan Department of Treasury, encourages students to pursue postsecondary education by providing equality of access to student financial resources and information.
- Through the administration of various student financial assistance programs, students receive the guidance and funding necessary to pursue their educational goals.

## Student Scholarships & Grants



- What We Do:
  - Administer 11 programs that provide more than \$130 million to Michigan institutions on behalf of students.
  - Of that \$130 million, a total of \$15,956,800 is from general fund and the rest is from federal sources.
  - Determine eligibility for State of Michigan programs.

# What We Do



## 9 Funded Aid Programs

- Children of Veterans Tuition Grant (CVTG)
- Dual Enrollment (DE)
- Michigan Competitive Scholarship (MCS)
- Michigan Tuition Grant (MTG)
- Police and Fire Fighter's Survivors Tuition Grant (STG)
- Tuition Incentive Program (TIP)
- Fostering Futures Scholarship (FFS)
- GEAR UP College Day
- MI GEAR UP
- 2 Unfunded Aid programs
  - Michigan Nursing Scholarship
  - Teacher Loan Cancellation Low Income (TCLI) Directory

# MiSSG Student Portal

## Mi Student Aid

Planning & Planning
Scholarships & Grants
Student Grants
Outreach Services

**Scholarships & Grants**

- Financial
- Eligibility
- History
- Plan your FAFSA
- FAFSA Worksheet
- Michigan Tuition Grant
- Michigan Competitive Scholarship
- Annual Election
- Scholarships and Grants
- Forms & Documents
- FAQs
- Request a Grant
- FAFSA Renewal

MI STUDENT AID
SCHOLARSHIPS & GRANTS
MISSG

**MISSG**

MISSG provides students, high school counselors, and college financial aid personnel access to records, applications, and information from CCG.

**Student**

For students to have access to the **MISSG Student Portal**, they must have a current year **Free Application for Federal Student Aid (FAFSA)** on file or have a Tuition Incentive Program (TIP) record. First time student users must have their Social Security number when signing up. To begin, click "Sign up" and create a username and password.

**High School Counselor**

For high school counselors to have access to **MISSG**, a **Data Use Agreement (DUA)** must be signed by the high school principal who authorizes the users on the **Data Receiver Designee form**. A username and temporary password will be assigned by SSG and emailed to the Data Receiver Designee(s). If your high school is supported by a community/local college access group, please complete the **Secondary Security Access Form**.

**College Administrator**

For college financial aid personnel to have access to **MISSG**, they must complete the **College Security Access Form**. A username and temporary password will be assigned by SSG and emailed to the authorized financial aid personnel. The MISSG User Rights Hierarchy document exists to describe each MCS/MTG security level.

For questions about MISSG, please e-mail [SSG@michigan.gov](mailto:SSG@michigan.gov) or call 800-4-GRANTS (800-447-2687). A recorded voicemail for our office and a website for form retrieval are available. Additional information is available on our website.

3

## Customer Care Center

- What We Do:
  - Provide customer services to students, families, high school counselors and financial aid professionals.
  - Provide a toll-free number – 1-888-447-2687.
  - Assist students with application processes.
  - Help students to locate scholarships using our Place-Based Database.

## Place-Based Scholarship Database

- Accessible by calling the Customer Care Center (CCC)
  - Student calls → Answers demographic questions → CCC Representative searches the database to locate eligible scholarships
  - The Representative will notify the student of any potential scholarship opportunities.

## 529 Savings Plan Division

- What We Do:
- Administer Michigan's 529 Savings Plans designed to encourage saving for the future expenses of a designated beneficiary.



- Michigan Education Trust (MET): MET, Michigan's guaranteed tuition program, allows families and others to purchase future college tuition at today's rates.
- With MET, families avoid rising tuition rates, which are expected to more than double over the next 10 years.
- The first 529 Prepaid Tuition Program was implemented in 1988
- Purchase Options



Administered by Michigan Department of Treasury



## MiABLE 529 (A)



- ❑ **MiABLE – Michigan Achieving a Better Life Experience**
  - ❑ **What We Do:**
    - ❑ **Administer Savings/investment accounts to allow people with a disability to save without losing eligibility for SSI, Medicaid and certain other public benefits. Michigan became the 5<sup>th</sup> state in the country to open an ABL program in November 2016.**
    - ❑ **Meet with parent groups, disability advocacy organizations and potential ABL beneficiaries. Staff conduct weekly information sessions statewide about the benefits of creating and using an account.**

## Student Loan Repayment Division

- What We Do:
- Michigan Guaranty Agency (MGA) administers the federal guaranteed loan program under rules established by the US Department of Education.
- MGA insures federal student loans and pays claims to lenders (private Banks, credit unions, etc.) when borrowers default.
- The Federal Family Education Loan (FFELP) Program was eliminated June 30, 2010. MGA is still servicing and collecting on existing FFELP portfolio.



## What We Do



- Default aversion assistance to borrowers.
- Forgiveness/discharge programs.
- Student payment plans, consolidations, and rehabilitations.
- Provide funds for outreach per legislative mandate.





- What We Do:
  - Provide Outreach services to make college accessible, affordable and achievable.
    - *"Looking for scholarships? Trying to land some grants? Visit MI Student Aid, and we can help with that!"*
  - Educate students and families about:
    - Eligibility for federal and state programs
    - Strategies to minimize loan debt
    - Financial literacy
    - Scholarship searches
    - Financial aid application and college enrollment process



### Meet the Students Where They Are

- Video Library
- Targeted Live Events
- Social Media
- Text Messaging
- Website
- Publications
- Newsletter
- Regional One-Stops - My College, My Future, My Doorstep





## MI Student Aid Activities



Dee-1 gets students excited for college at Waverly High School, 2016.



MI Student Aid Outreach Team w/Dee-1, 2016.

## Extreme Reality

Objective: Students gain perspective into real life decisions and responsibilities that are part of adulthood.

- Students are assigned careers, income, and expenses, then create a budget.



Harbor Lights Middle School  
Holland, MI, 2016.

## Extreme Reality STEM

Objective: Students are able to get an idea of actual jobs in high demand career fields.

- Extreme Reality STEM.

Students explore Science, Technology, Engineering, and Mathematic (STEM) career and educational pathways in a STEM focused version of Extreme Reality.

Stevenson High School  
Livonia, MI, 2016.



## Collegiate Reality

Objective: We want students to be familiar with and understand how to interpret the awards letters they will receive.

- With near-peer mentors, students use a financial aid award letter to craft college financing strategies.

RED UNIVERSITY		Department of Student Services		
OFFICE OF STUDENT FINANCIAL AID				
Sample Award Letter				
Dear Applicant Student,				
Total of Awards: \$4,000				
Using a for Award or B for Decline for each individual award where indicated below				
	FAO	Grant	Total	Award / Decline
Scholarship	\$1,000	\$1,000	\$4,000	A / B
Fee Waiver	\$1,000	\$1,000	\$2,000	A / B
Loan	\$2,000	\$2,000	\$2,000	A / B
Parent Unsubsidized Loan	\$1,700	\$1,700	\$1,700	A / B
Federal Unsubsidized Loan	\$1,000	\$1,000	\$1,000	A / B
Parent PLUS Loan	\$2,000	\$2,000	\$2,000	A / B
<b>Total Student Loans</b>	<b>\$4,700</b>	<b>\$4,700</b>	<b>\$4,700</b>	
Grant				
TEACH Grant	\$2,000	\$2,000	\$2,000	A / B
College Work-Study Program	\$1,000	\$1,000	\$1,000	A / B
Michigan Tuition Grant	\$1,000	\$1,000	\$1,000	A / B
<b>Total Financial Aid</b>	<b>\$4,000</b>	<b>\$4,000</b>	<b>\$4,000</b>	
<b>Total Net</b>			<b>\$0.00</b>	
<p>These awards are contingent on the accuracy of the information you provided to the College. The aid amount is subject to change if you receive additional outside resources. All there is a change in the family's income. If relevant information was provided, all there is a change in your enrollment or housing status (initial or any). All to submit all required paperwork. Withdrawal from the College. Discontinue studies. All there is a change in your enrollment status. All there is a change in your enrollment or continuation of any of all awards.</p> <p>To accept and ensure your financial aid award complies with the attached reservation agreement, please return this award letter by the date of the letter.</p> <p>If you have any questions regarding your financial aid award package, or would like to learn more about financing options, please see the Financial Aid Office at any time.</p> <p>Sincerely, Office of Financial Aid</p>				

## Workshops



Davenport University  
Lansing, MI, 2016.



Saginaw ISD  
Transitions Center,  
College Fair, 2016.

## Questions???