

BRIDGE

MAPLE STREET BRIDGE REPLACEMENT MAPLE RAPIDS, MI

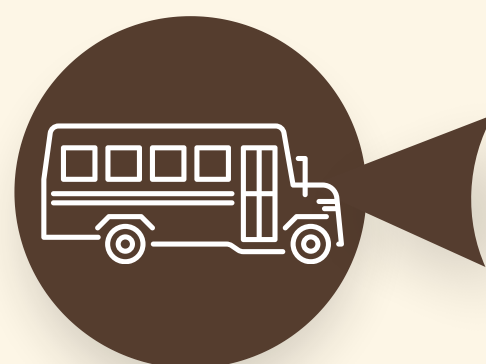
\$4.8
MILLION

Cost to replace the
Maple Street Bridge



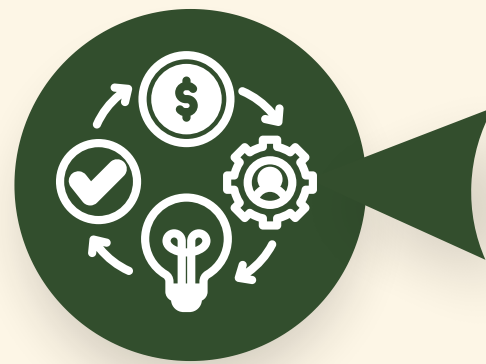
Emergency Services

Maple Rapids Fire and Ambulance spans a wide range of coverage and the detour is causing major delays in reaching emergencies. The detour is impacting Clinton County and Gratiot County, which is north of the bridge.



Community and Schools

Lifespan of the bridge is limited and will soon become impassable, which would be a hardship on the community and extend not only to Maple Rapids, but the surrounding communities and schools.



Business

Restricted load limits reduced **from 40 ton to 24 ton** causing vehicles over 24 ton to take a 10-12 mile detour causing increased emissions and is less efficient for businesses who use the bridge daily.

A 3 Span Concrete Bridge
constructed in 1980
Length 137.8' | Width 30.5'

5-DAY TRAFFIC STUDY | 03.27.23 TO 03.31.23



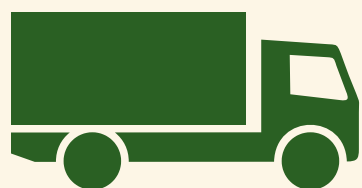
5,662 Vehicles

1,132 / avg. per day
Speed Limit 25 mph
Average Speed 28 mph



0' to 8' Length

41.9% of Total Traffic (2,370)



8' to 20' Length

52% of Total Traffic (2,946)



20' to 40' Length

3.4% of Total Traffic (194)



40' to 70' Length

2.5% of Total Traffic (143)



> 70' Length

0.2% of Total Traffic (9)

Village of Maple Rapids

118 W Adelaide
PO Box 200
Maple Rapids, MI 48853
Phone: 989.682.9227
Fax: 989.682.4411



Bridge Rating

Downgraded to a '4', which is the lowest in the Bridge Rating Scale

