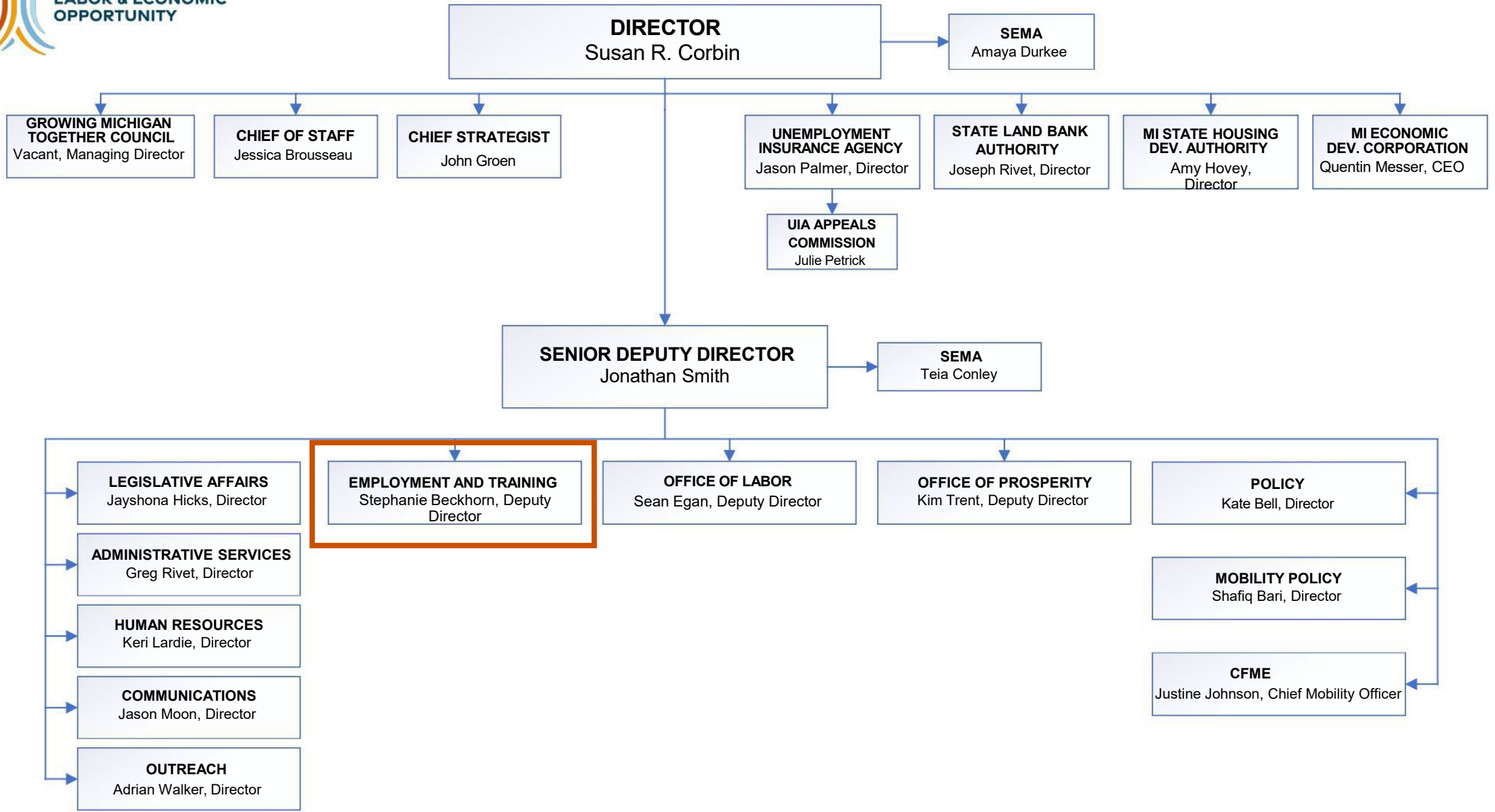


Employment & Training Programs

Stephanie Beckhorn, Deputy Director
Employment & Training



MICHIGAN DEPARTMENT OF
**LABOR & ECONOMIC
OPPORTUNITY**



Who is LEO-E&T?



Bureau of Services for Blind Persons (BSBP)

Believes in capacity of people who are blind or visually impaired to achieve employment and independence, providing training and other services that empower people to achieve their individual goals.

Operations

Serves as the administrative and operational support function for internal and external LEO-E&T needs in the areas of Communication, Experience and Support Services and Enterprise Information Management.



Michigan Rehabilitation Services (MRS)

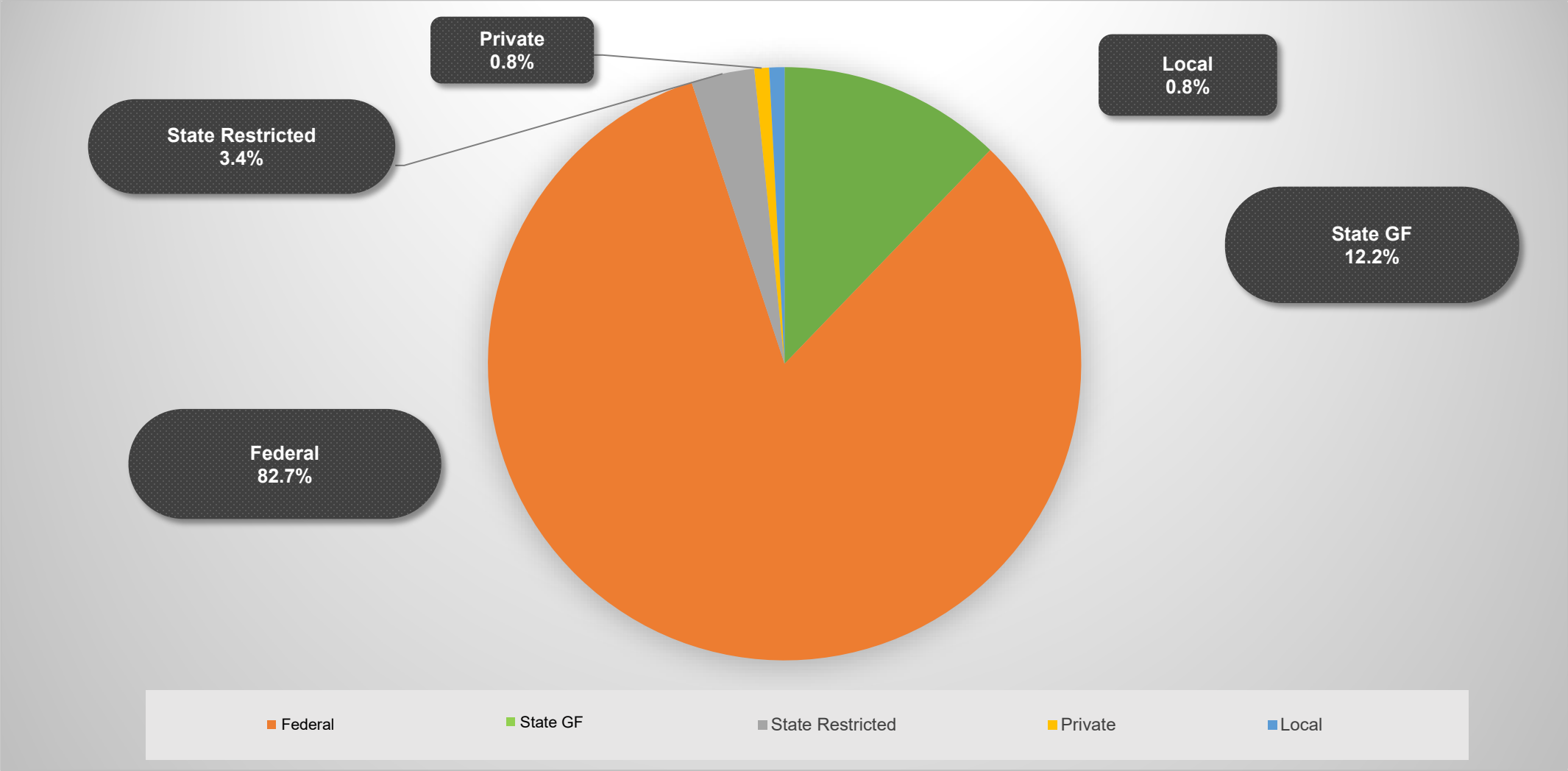
Provides specialized employment and education-related services and training to assist individuals with disabilities in becoming employed, advancing in, or retaining employment.



Workforce Development (WD)

Supports demand-driven workforce system, assists structurally unemployed with financial independence, advocates for integration of workforce development into the K-12 school system, and supports alignment of workforce development with economic development efforts.

LEO-E&T FY26 Budget by Fund Source



Employment & Training's Impact Across Michigan



321,000 Individuals Served

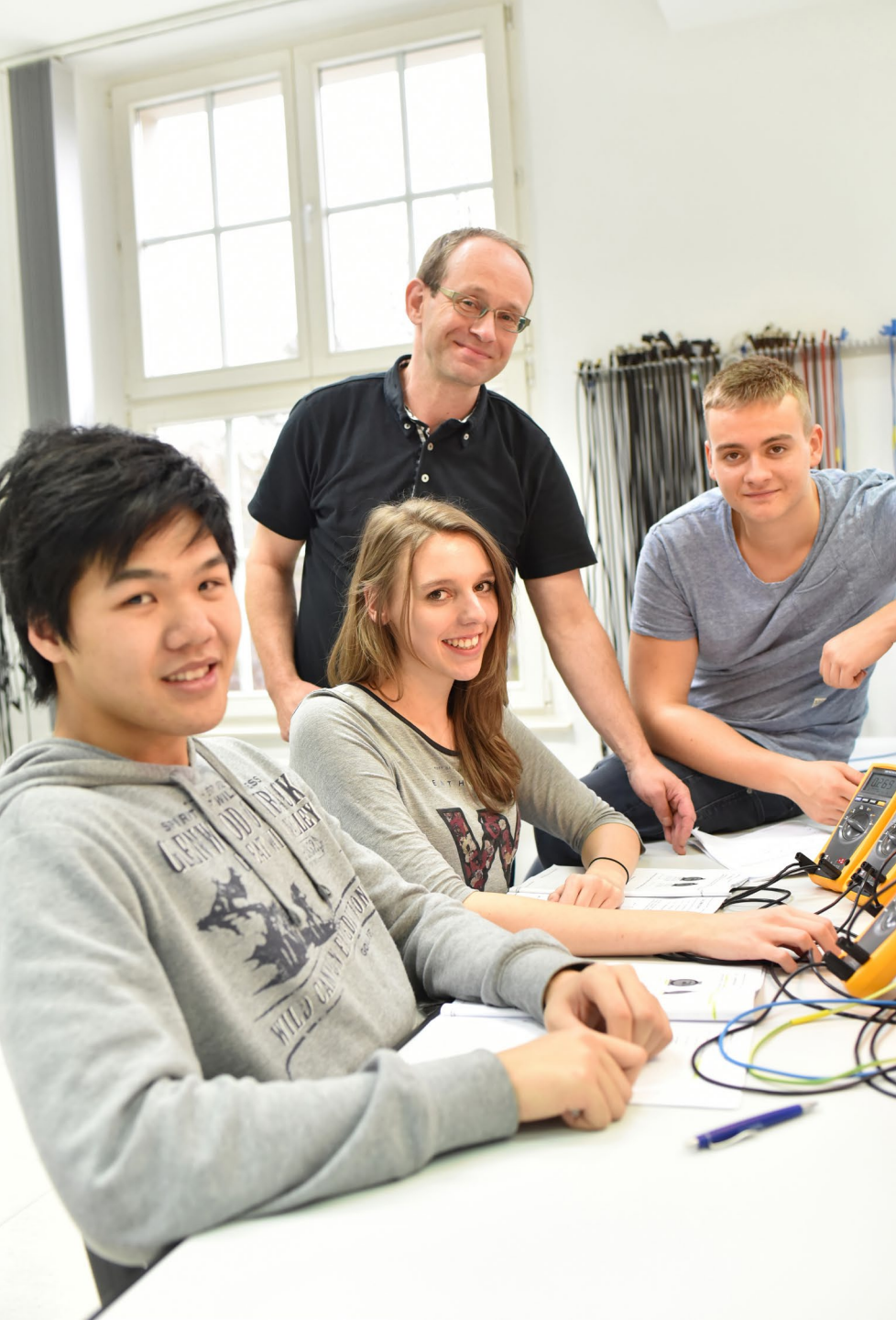


7,900 Employers Served



10,000 Credentials Earned





Adult, Dislocated Worker, Youth

- **Program:** Services to help increase employment, retention and earnings and overcome barriers.
- **ROI:**
 - **24.4% increase** in wages for participants who receive training
 - **94.7%** of individuals trained are employed in Michigan
 - Participants experience **\$16.10 in increased total wages** for every dollar invested in their training
 - Michigan is **#1 in the nation** for credential attainment for adults
 - Over **84%** of adults engaged in training attain an industry-recognized credential
 - Michigan provides employment services to **more participants** than any other Midwest state
 - Michigan is **#3 in the nation** in helping adults get employed



Adult Education

- **Program:** Helps strengthen foundational skills – including reading, writing, math, problem-solving and English language proficiency.
- **ROI:**
 - Enrollment **increased 8%** to 32,867
 - **13.7% increase in participants**
 - 63% of participants enter at or below 6th grade level / 86% were below 9th grade level
 - **19% increase** in diploma or equivalent attainment
 - Average cost per participant: **\$1,694**
 - Individuals with a high school credential can earn **\$7,500+** more per year than those without
 - Those who go on to attain a two-year degree can earn an additional **\$25,400** more per year



23+ High School Diploma Program

- **Program:** Provides adult learners, age 23+, with dropout reengagement services, academic intake assessments and integrated learning plans.
- **ROI:**
 - **524** adult learners earned their high school diploma
 - Average cost per diploma: **\$5,725**
 - Adult learners earned **9** career training program credentials

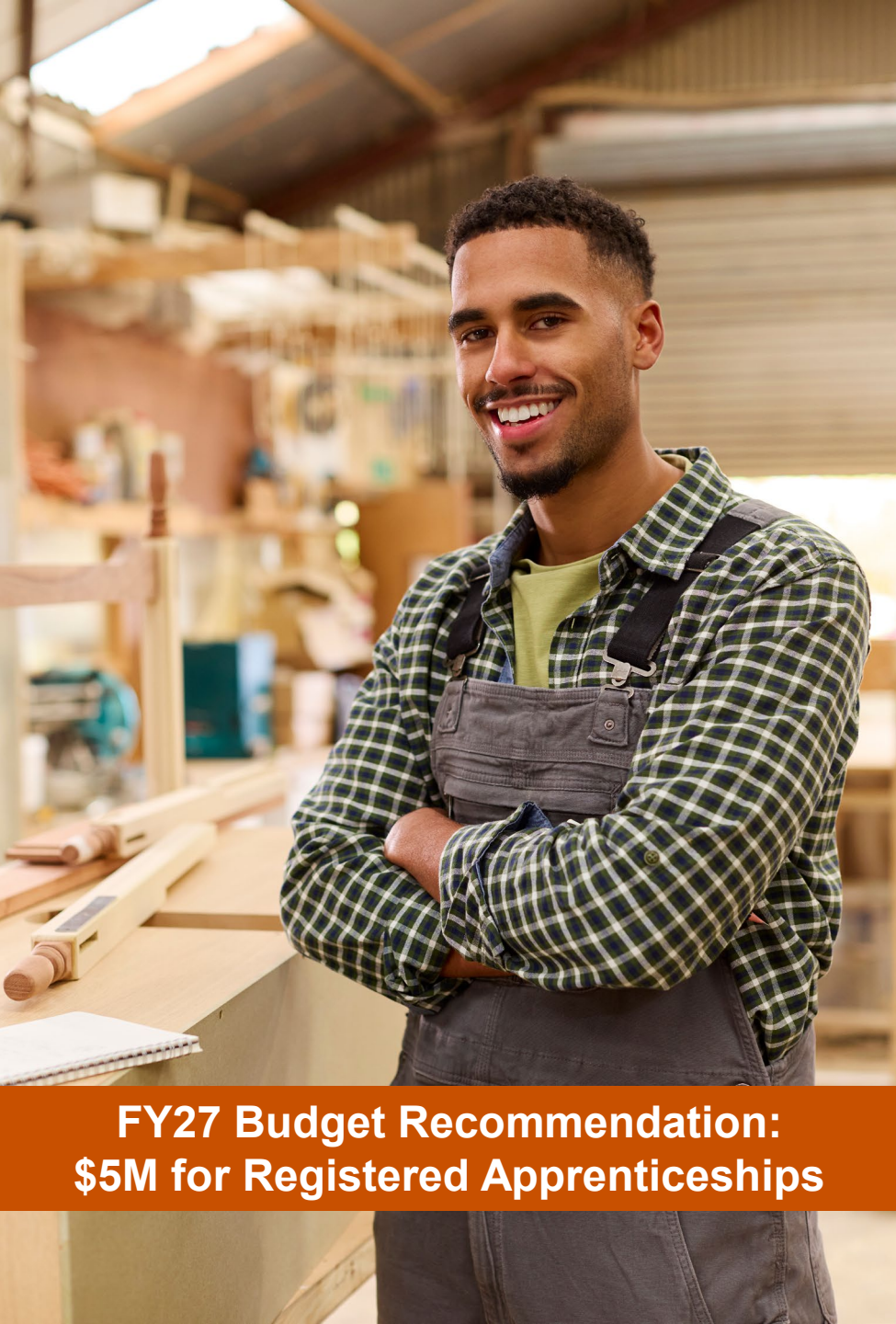


Vocational Rehabilitation

- **Program:** Services to help individuals with disabilities (adults, youth) find and retain high-quality employment.
- **ROI:**
 - Michigan is **#1 in the nation** for helping Vocational Rehabilitation customers get employed
 - Michigan's Vocational Rehabilitation customers have the **highest earnings** in the country
 - Every dollar invested in VR can yield **\$2.17** in economic benefits

Going PRO Talent Fund

- **Program:** Grants to Michigan employers to support training for current and new employees in high-demand, high-skill industries.
- **ROI:**
 - Average hourly wage increase nearly **\$3** among employees retained at least 6 months
 - Roughly **\$6,000** in additional annual earnings
 - Total wages estimated within one year among retained trainees is **2.78 times** program investment
 - **90%+** of awards go to businesses with fewer than 500 employees
 - Businesses with less than 100 employees have received **60%** of all training grants



**FY27 Budget Recommendation:
\$5M for Registered Apprenticeships**

Registered Apprenticeship

- **Program:** Earn while you learn. Strengthen talent pool and ensure job seekers gain in-demand skills; provide employers with talent needed to grow businesses.
- **ROI:**
 - Michigan is **top 10 in the nation** for Registered Apprenticeship
 - **800** active Registered Apprenticeship Programs
 - **24,000** active Registered Apprentices
 - **3,300** completers
 - Every dollar invested in Registered Apprenticeship Programs yields **\$1.47**
 - **94% employment rate** one year after completion
 - Median annual earnings after completion of **\$80,700+**

FY27 Budget Recommendation: \$25M for Workforce Training & Development

H.R.1 Medicaid Work Requirements January 1, 2027

- 80 hours of approved activities when applying or renewing Medicaid benefits
- 200,000 HMP beneficiaries subject to work requirements

H.R.1 SNAP Work Requirements November 1, 2025

- 185,000 lost waivers
- Expanded work requirements for individuals age 60-64 and those with children age 14+
- Deferrals ended for Veterans, homeless adults and former foster youth

MWA services: job search and job skills training, job placement assistance and Vocational Rehabilitation services

Immediate Impact to SNAP Referrals & Participation throughout Michigan

Comparing FY 2025 1st Quarter to FY 2026 1st Quarter:

- MWAs saw **16,783% increase** in SNAP referrals
- MWAs saw a **616% increase** in SNAP participants

	FY25 Q1 Referrals	FY26 Q1 Referrals	% Increase in Referrals
GST Michigan Works!	109	10,864	9,967%
Michigan Works! Southeast	115	8,446	7,344%
West Michigan Works!	146	16,850	11,541%



MICHIGAN DEPARTMENT OF
**LABOR & ECONOMIC
OPPORTUNITY**

**EMPLOYMENT
& TRAINING**

Stephanie Beckhorn, Deputy Director
Employment & Training



Address

PO Box 30805
Lansing, MI



Email

BeckhornS@michigan.gov



Phone

517-335-5858



Website

Michigan.gov/LEO



Facebook
[MichTalent](https://www.facebook.com/MichTalent)



X
[MichiganTalent](https://twitter.com/MichiganTalent)



LinkedIn
[Michigan Talent](https://www.linkedin.com/company/MichiganTalent)

