

**Palms Road over Smiths Creek
Sections 25 & 26, Wales Township
St. Clair County, MI**



Bridge with outdated railing and heavy rusting

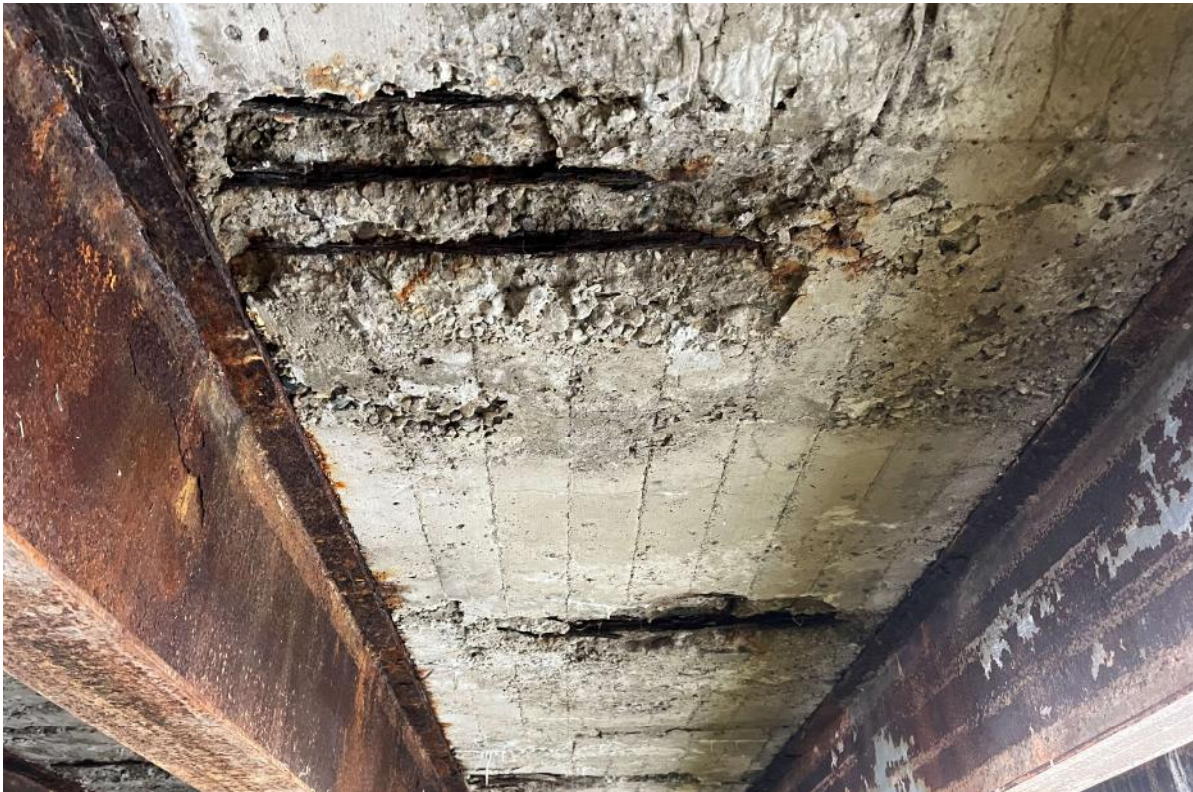


Hole in web of beam at south abutment. An additional three beams have holes in webs.

**Palms Road over Smiths Creek
Sections 25 & 26, Wales Township
St. Clair County, MI**



Spalling and delamination throughout deck underside



Bay 5W, three spalls to corroded steel with loose bars.

**Palms Road over Smiths Creek
Sections 25 & 26, Wales Township
St. Clair County, MI**



Reduced Load Posting