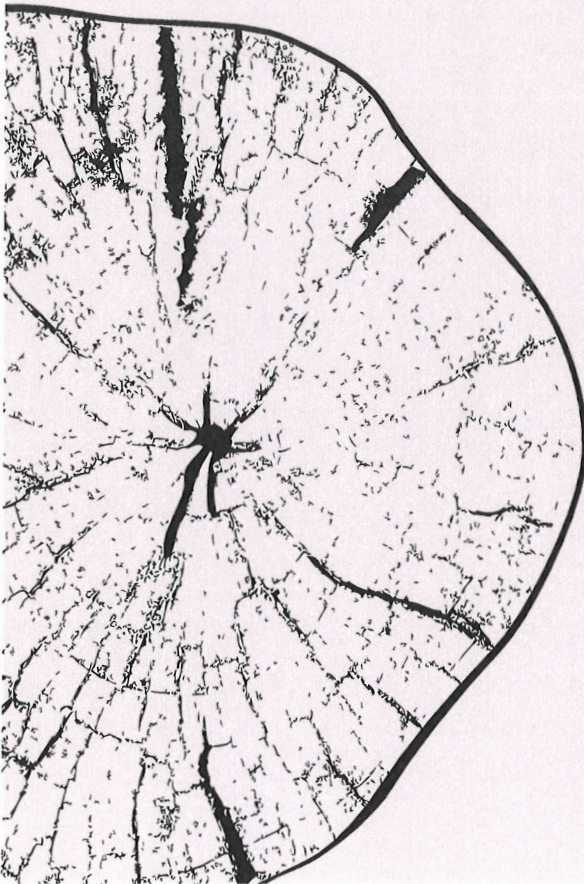


Investing in the Next Generation of Skilled Craftspeople

The Why

The Sam Beauford Woodworking Institute (SBWI) is redefining higher education for aspiring artisans and tradespeople. Through hands-on learning, we challenge the outdated belief that a conventional university is the only path to success. By merging fine arts with high-end carpentry, SBWI provides a rigorous, accessible, and transformative education in the skilled trades.

Skilled trades are the backbone of our communities, yet they face a critical shortage of workers. With older tradespeople retiring and fewer young professionals entering the field, industries like carpentry, restoration, and furniture-making are at risk. At the same time, artificial intelligence and automation are shifting the job landscape, making hands-on skills more valuable than ever. The stigma surrounding trades education only deepens this crisis, discouraging talented individuals from pursuing fulfilling careers in craftsmanship.





The Plan

SBWI is poised for bold growth to meet this urgent need. Over the next 20 years, we will:

- Expand from 20 to 200 annual graduates by developing nine new programs in high-demand trades.
- Offer a full college experience, including on-site housing, career guidance, and business training.
- Secure accreditation and funding access, ensuring affordability for all students.
- Construct state-of-the-art workshops and learning spaces with sustainable building practices.
- Diversify revenue streams to ensure long-term financial stability.

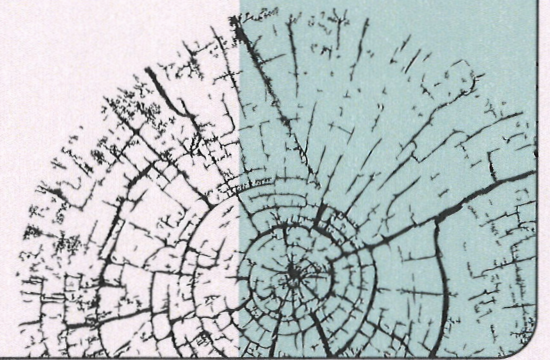
Impact & Sustainability

With Phase 1 of our expansion requiring \$16 million, SBWI will immediately increase graduate output from 20 to 60 per year, significantly impacting the skilled labor market. Investments in facilities, faculty, and scholarships will create a long-term, self-sustaining model. By partnering with SBWI, donors will:

Influence young lives by providing lifelong careers in woodworking and carpentry.

Reshape society's view of trades, positioning them as essential and prestigious fields.

Support sustainable innovation, fostering eco-friendly building practices and techniques.



Join us in shaping the future of
CRAFTSMANSHIP

We invite you to be part of this transformative journey. Your support will not only change lives but also strengthen communities and redefine education for generations to come.

For partnership opportunities and to learn more, give us a call at **517.902.8383**