



# Administration & Public Safety Center

Preparing Tittabawassee Township for the future by improving customer service, enhancing citizen engagement, and increasing public safety.

## Project Summary

The Township's current administrative building, constructed in 1958, has undergone several expansions during a period of significant growth. As the community has grown and services have broadened, the Township's administrative staff has also increased.

However, the existing building lacks a secure entrance to ensure staff protection. The main entrance allows unrestricted access to offices, with separation being compromised by the location of the entrance and lobby.

The largest room within the administrative building is the board room, which is designed specifically for board meetings but lacks flexibility to accommodate large training events of more than 40 people, a necessity for both the Police and Fire Departments.

The primary objective of this project is not to relocate the campus, but rather to redevelop the existing property to meet current and future needs. This redevelopment will involve renovating the current administrative building, constructing a new second-story addition to better address public safety and administrative requirements, and building a new public safety garage within the footprint of the existing public safety building.

## About the Township

Tittabawassee Township developed around the unincorporated Village of Freeland, which was initially a small farming and logging community. Over the past 40 years, the Township has experienced explosive growth, including a 134.5% increase in population, the fastest rate in Saginaw County, as well as significant growth in housing units. The current population of the community is 10,500 residents.

The Township is at the heart of the Great Lakes Bay Region, approximately 12 miles from the cities of Bay, Midland, and Saginaw. Its central location makes it home to the MBS International Airport, which sees approximately 70,000 inbound and outbound flights annually. The airport supports local economic growth by facilitating business travel, tourism, and commerce, helping attract and retain businesses in the Great Lakes Bay Region.

Additionally, Tittabawassee Township hosts the Saginaw Regional Correctional Facility (SRCF), a 43-acre facility with 1,200 beds that houses Level I, II, and IV individuals.

The Township also has an 8-mile railroad route that transports chemicals to and from three major chemical companies.

These assets create a unique risk profile for emergency services needs in the Township, which seeks to enhance its public services facility to improve readiness and response.

## Next Steps

The Township is seeking \$750,000 for the preliminary planning, design, and preconstruction stages of this project.



# Project Description

## Current Facility

6,000 SF Administration Building  
8,500 SF Public Safety Building

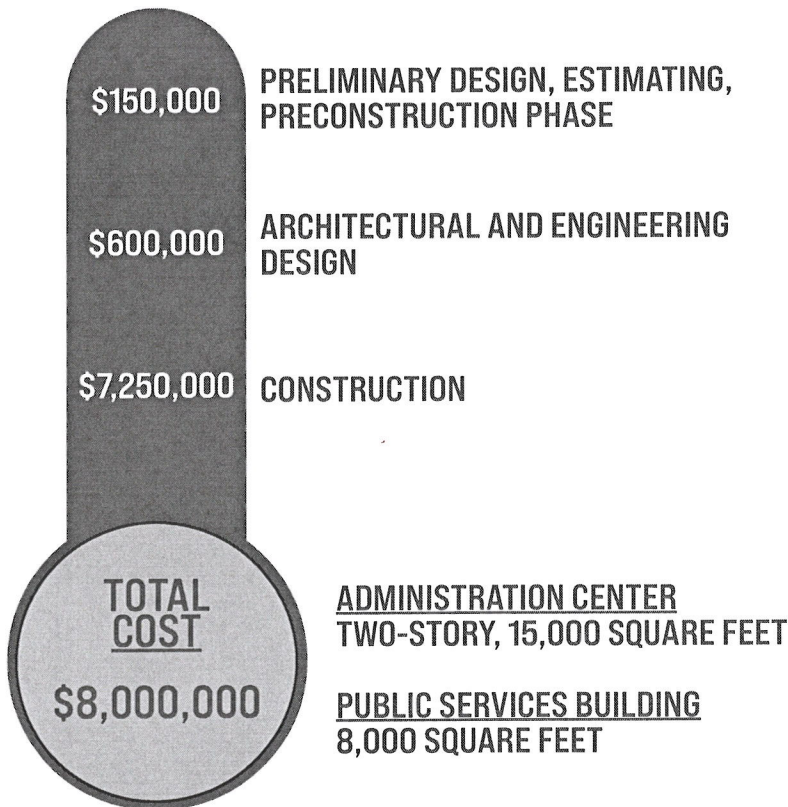
## Proposed Facility

22,500 SF Combined Building

## Funding Request

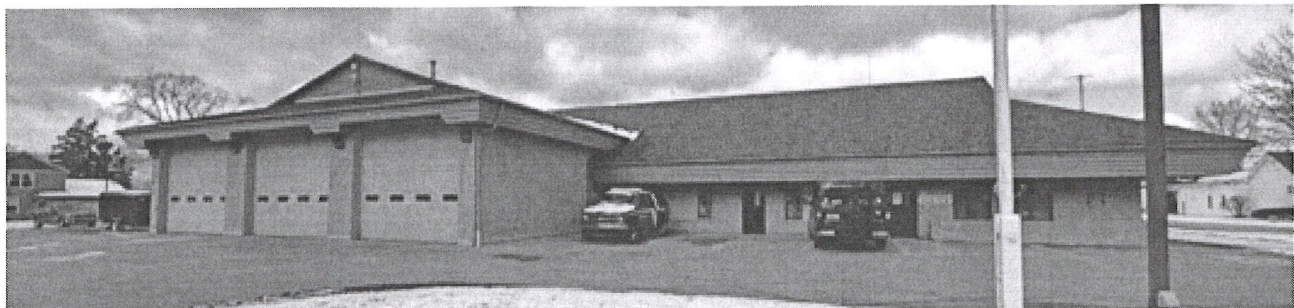
\$750,000 for planning and design of the campus redevelopment.

## Total Project Estimated Costs



## Project Features

- Combine the administrative and public safety functions under one roof
- Achieve efficiencies and cost savings through design and collaboration
- Expand space for current and future Police Department needs
- Expand space for current and future Fire Department needs
- Enhance efficient administrative space for current and future needs
- Improve lobby area to enhance staff safety and security
- Add larger Board meeting space to accommodate larger audiences
- Keep current campus location, avoiding the need for new infrastructure



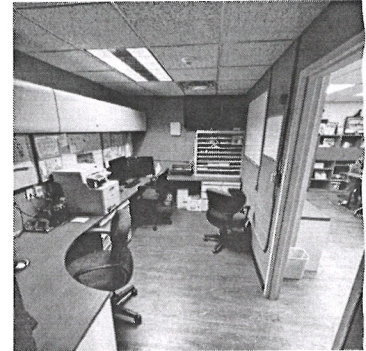


# Existing Public Safety Facilities

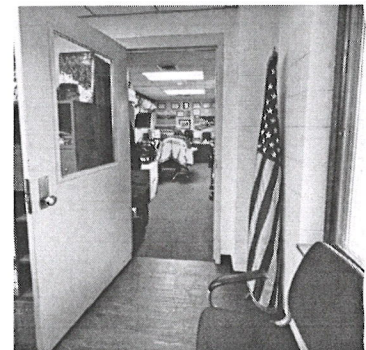
With the additional public safety personnel in both departments and the increased number of calls, the most pressing constraint of the current building is physical space.

To sufficiently meet the needs of today and into the future, the following spaces are needed:

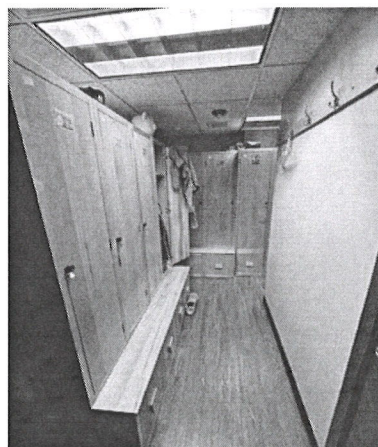
- **Bigger locker rooms overall and specific locker rooms for the Fire Department:** The current locker room was only designed for four police officers. In the case of the Fire Department, they currently have no locker rooms for firefighters.
- **Dedicated Evidence Room:** The current room in use is essentially a closet. There is no place to properly inventory and store evidence.
- **Weapons and Equipment Room:** Similar to the evidence room, the current room is basically very small and has limited storage; the room has no area to clean or maintain firearms.
- **Larger reception area for the public:** The reception area is small and cannot safely accommodate more than two people.
- **More offices:** Road Patrol Officers must share one office and two workstations.
- **Larger garage:** Currently, patrol cars must sit outside in the weather when not being used due to limited indoor parking space.
- **Improved ventilation customary to a modern garage:** The current building does not have proper ventilation to evacuate diesel smoke fumes.
- **New Training Room:** The current complex does not have a room to accommodate large groups of people to accommodate important public safety training for the Police and Fire Departments, which often includes collaboration with other departments, agencies, and authorities.



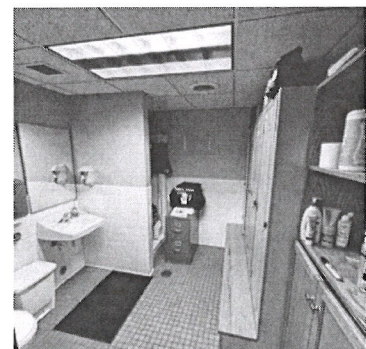
Radio Room  
Fire Department



Chief's Office  
Fire Department



Men's Locker Room  
Police Department



Women's Locker Room  
Police Department



# Emergency Services

The Tittabawassee Township provide first response for a 36 square mile area, protecting critical infrastructure and facilities. The Saginaw Regional Correctional Facility spans 130 acres and includes 7 prisoner housing units and 6 support buildings. The MBS International Airport, a 2,300-acre facility serving major passenger airlines, general aviation, and corporate aviation.

Additionally, there are 7 miles of railroad traffic carrying HAZMAT and farming products, and a 6-mile stretch of state highway that features commuter and HAZMAT traffic. Other protected facilities include Freeland Community Schools and the Michigan Gas Storage Facility, which includes an underground natural gas pipeline and pumping facility.

## Fire Department

The Tittabawassee Township Fire Department, established in July 1936, has been providing services through an all-volunteer department since its inception. The department offers a BLS non-transport EMS service to the community, with most service requests being medically related. HAZMAT services are provided through mutual aid with the Saginaw County HAZMAT Team and, if needed, from the Regional Response Team located in the City of Midland. The township also provides a Regional REHAB Response program for on-scene rehabilitation for firefighters and police if needed. Additionally, the fire department offers a comprehensive Fire Prevention Program to the community, serving the school system, senior population, and community activities.

## Police Department

Currently, the Tittabawassee Township Police Department has a full-time Chief, Sergeant, 5 full-time officers, 3 part-time road patrol officers, 6 part-time officers assigned to MBS Airport, as well as an administrative assistant. This force provides the township with 24/7 coverage. The Police Chief's position is a working position and will respond to calls as needed during normal business hours. Township officers also provide coverage for the MBS International Airport.

