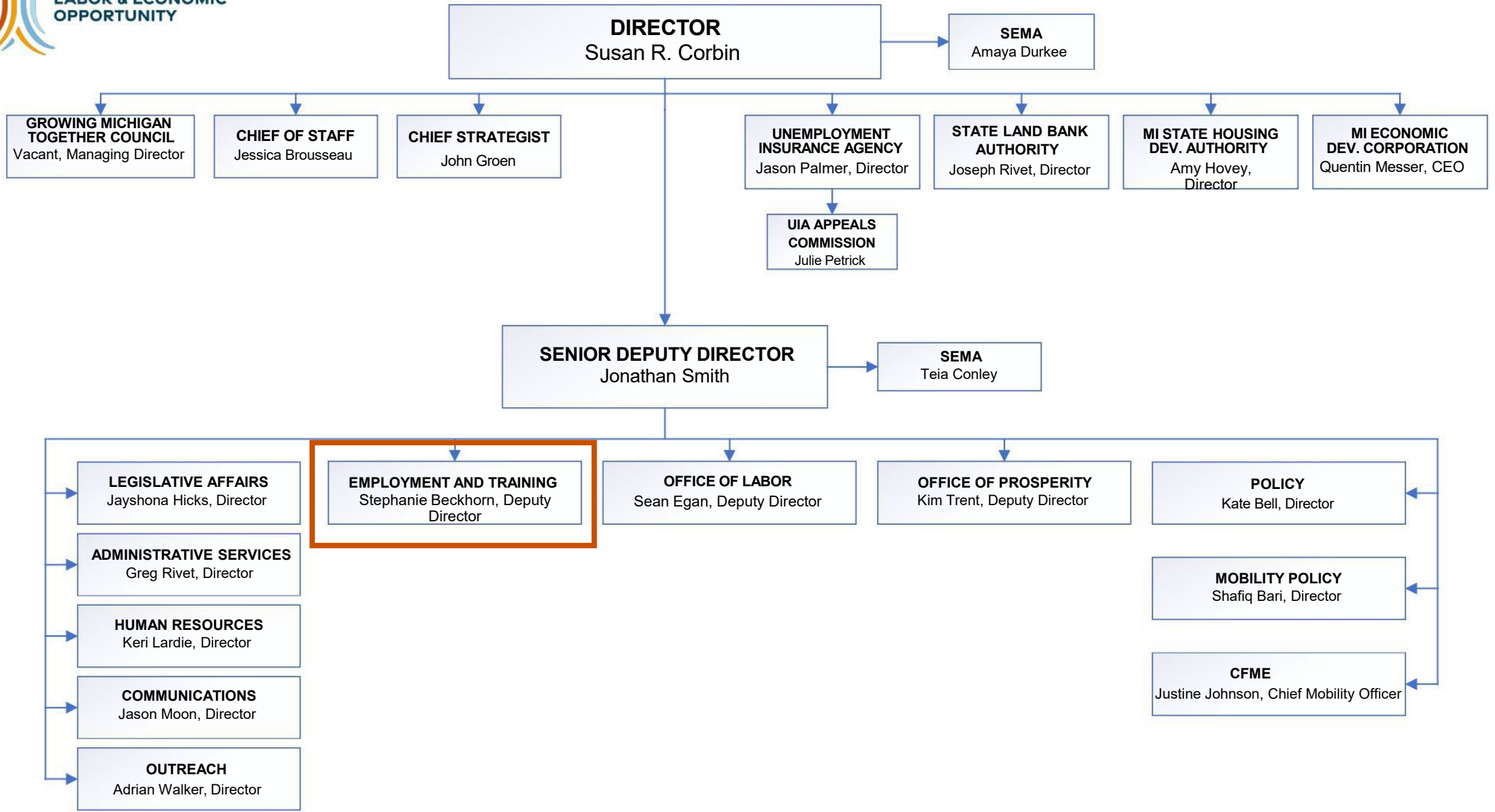


Workforce Development Programs & Going PRO Talent Fund

Stephanie Beckhorn, Deputy Director
Employment & Training



MICHIGAN DEPARTMENT OF
**LABOR & ECONOMIC
OPPORTUNITY**



Who is LEO-E&T?



Bureau of Services for Blind Persons (BSBP)

Believes in capacity of people who are blind or visually impaired to achieve employment and independence, providing training and other services that empower people to achieve their individual goals.

Operations

Serves as the administrative and operational support function for internal and external LEO-E&T needs in the areas of Communications & Outreach, Employee Experience and Enterprise Information Management.



Michigan Rehabilitation Services (MRS)

Provides specialized employment and education-related services and training to assist individuals with disabilities in becoming employed, advancing in, or retaining employment.

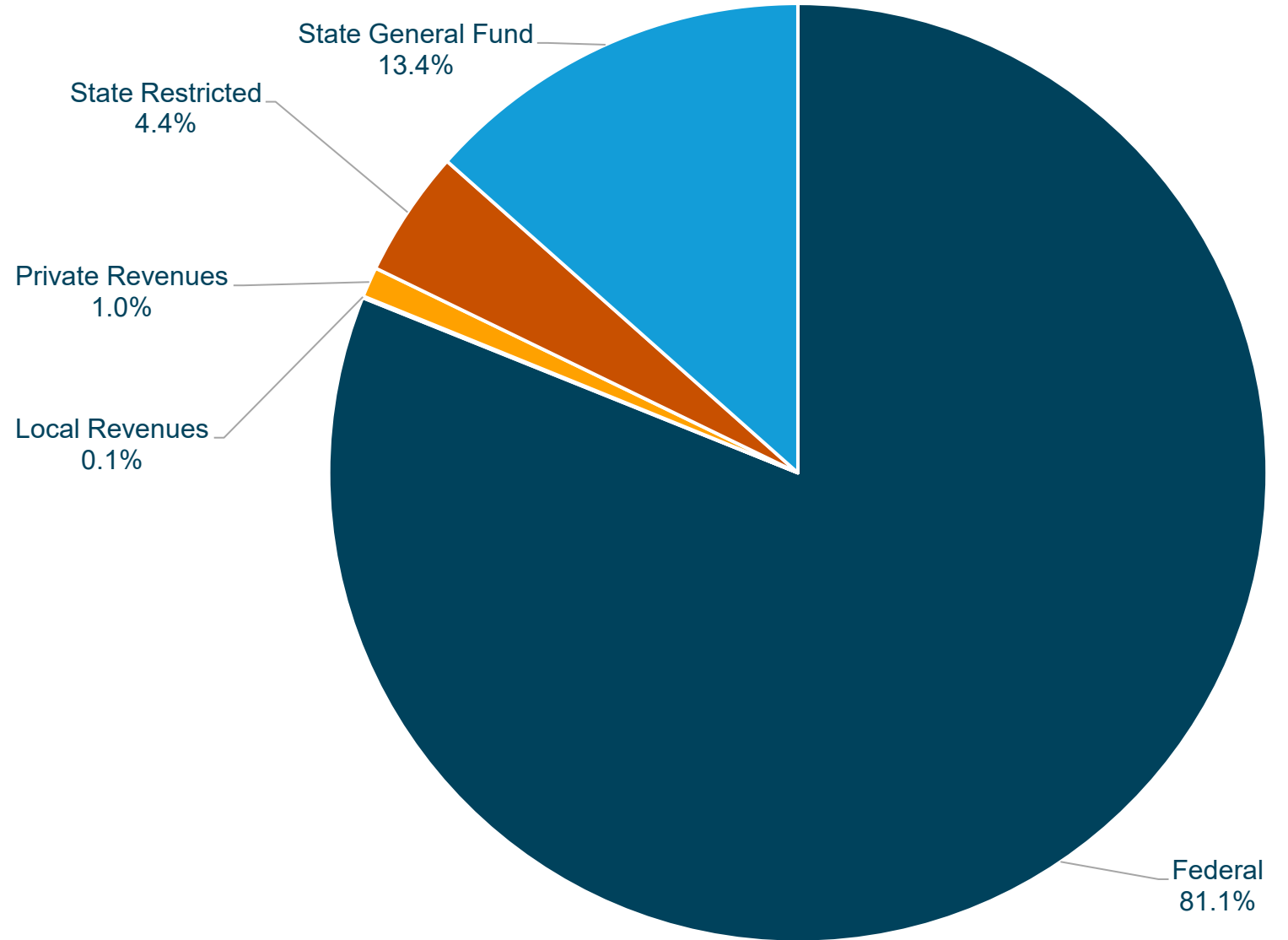


Workforce Development (WD)

Supports demand driven workforce system, assists structurally unemployed with financial independence, advocates for integration of workforce development into the K-12 school system, and supports alignment of workforce development with economic development efforts.

Workforce Development's Budget Information

LEO Workforce Development FY25 by Funding Source





Challenges Statewide Workforce Plan & LEO are Addressing

- **Labor force growth:** Workforce Development initiatives have grown Michigan's labor force the top spot in the Midwest
- **Growing the middle class:** Goal to move 75,000 households to the middle class
- **Educational attainment:** Supporting Michigan's goal of 60% educational attainment by 2030



Workforce Development's Areas of Focus

- **Support participants in our programs**, including underrepresented populations & individuals with barriers to employment
- **Expand talent by upskilling & reskilling Michiganders**; leveraging resources that lead to post-secondary and secondary credentials
- **Employ Michiganders** resulting from our programs
- **Boost wages** earned by participants in our programs

Workforce Development's Programs

Who Workforce Development Supports



Adults



Youth



Employers

Workforce Development Program Outcomes

- Michigan provides employment services to more participants than any other Midwest state.
- Michigan is top 10 in the nation for Registered Apprenticeships
 - 4th in active apprentices
 - 6th in new apprentices
 - 6th in completers
- Michigan is #3 in nation for customized reemployment services

Barrier Removal Employment Success

- **Program:** Supportive services address transportation, housing assistance, legal services, childcare, clothing needs, tools for work and other barriers that keep people from participating in the workforce
- **Outcomes:**
 - Employment **12% higher** one quarter after exit, **8% higher** four quarters following exit
 - Median wages **\$6,920 higher** than before participating in program
- **Success:** 43 people restored their driver's licenses via Road to Restoration clinic in Kalamazoo

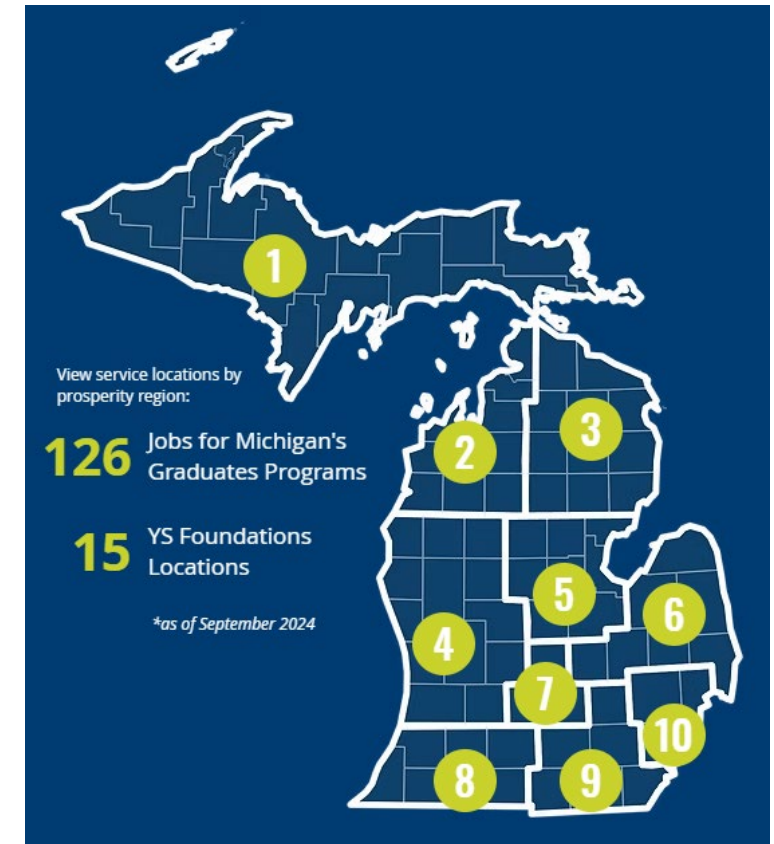
Registered Apprenticeship

- **Program:** Earn while you learn. Strengthen talent pool and ensure job seekers gain in-demand skills; provides employers with talent needed to grow businesses
- **Outcomes:**
 - **94% employment rate** one year after completion
 - Median annual earnings after completion of **\$80,700+**
- **Success:** Pathway opportunities for young professionals and Fessler & Bowman in Holly

FY26 Governor's Executive
Recommendation: \$19M

Jobs for Michigan's Graduates

- **Program:** Provide at-risk youth with counseling, technical skills development and job placement services
- **Outcomes:** Graduation rate of 90% and 58% go on to pursue post-secondary degree or credential
- **Success:** Soraya – working towards her dream of being a RN



Going PRO Talent Fund

- **Program:** Grants to Michigan employers to support training for current and new employees in high-demand, skilled trades industries
- **Outcomes:** 38,000+ workers trained and average hourly wage increase of 7.2%

FY26 Governor's Executive
Recommendation: \$54.8M

Going PRO Talent Fund Process

- Short-term training
- Fills demonstrated employer talent need
- Results in credential, certificate or degree
- Applications submitted by Michigan Works!
- Competitive review conducted by WD
- Three award cycles annually

Going PRO Supports Quality Applications

- Prioritized scoring criteria
 - High priority industry sector
 - Training at community college, university or third party
 - Support for businesses in low income and underutilized communities and minority owned
 - USDOL Registered Apprenticeship
 - Regional median wage threshold
 - Size of funding request
- Employer incentive to hire targeted populations

Going PRO Talent Fund Successes

- **Duncan Aviation (Battle Creek):** expand and upskill workforce – training 53 current employees (7 were registered apprentices) and adding 59 new hires
- **Rassini Brakes (Flint):** upskill 23 current employees in variety of training programs, as well as hiring of 20 new employees
- **Chain Oil Company (Wixom):** able to send employee to receive DOT-approved training and receive CDL-8

FY24 Going PRO Talent Fund Awards

Overall

\$63.1M

1,209 employers

37,756 individuals trained

Michigan Works! Southeast

\$3.3M

69 employers

2,037 individuals trained

West Michigan Works!

\$20.8M

331 employers

10,767 individuals trained

GST Michigan Works!

\$5.0M

94 employers

2,619 individuals trained

Macomb / St. Clair Michigan Works!

\$2.1M

43 employers

1,415 individuals trained

Michigan Works! Northeast Consortium

\$495,731

15 employers

339 individuals trained



MICHIGAN DEPARTMENT OF
**LABOR & ECONOMIC
OPPORTUNITY**

**EMPLOYMENT
& TRAINING**

Stephanie Beckhorn, Deputy Director
Employment & Training



Address

PO Box 30805
Lansing, MI



Email

BeckhornS@michigan.gov



Phone

517-335-5858



Website

Michigan.gov/LEO



Facebook
[MichTalent](https://www.facebook.com/MichTalent)



X
[MichiganTalent](https://twitter.com/MichiganTalent)



LinkedIn
[Michigan Talent](https://www.linkedin.com/company/MichiganTalent)

