

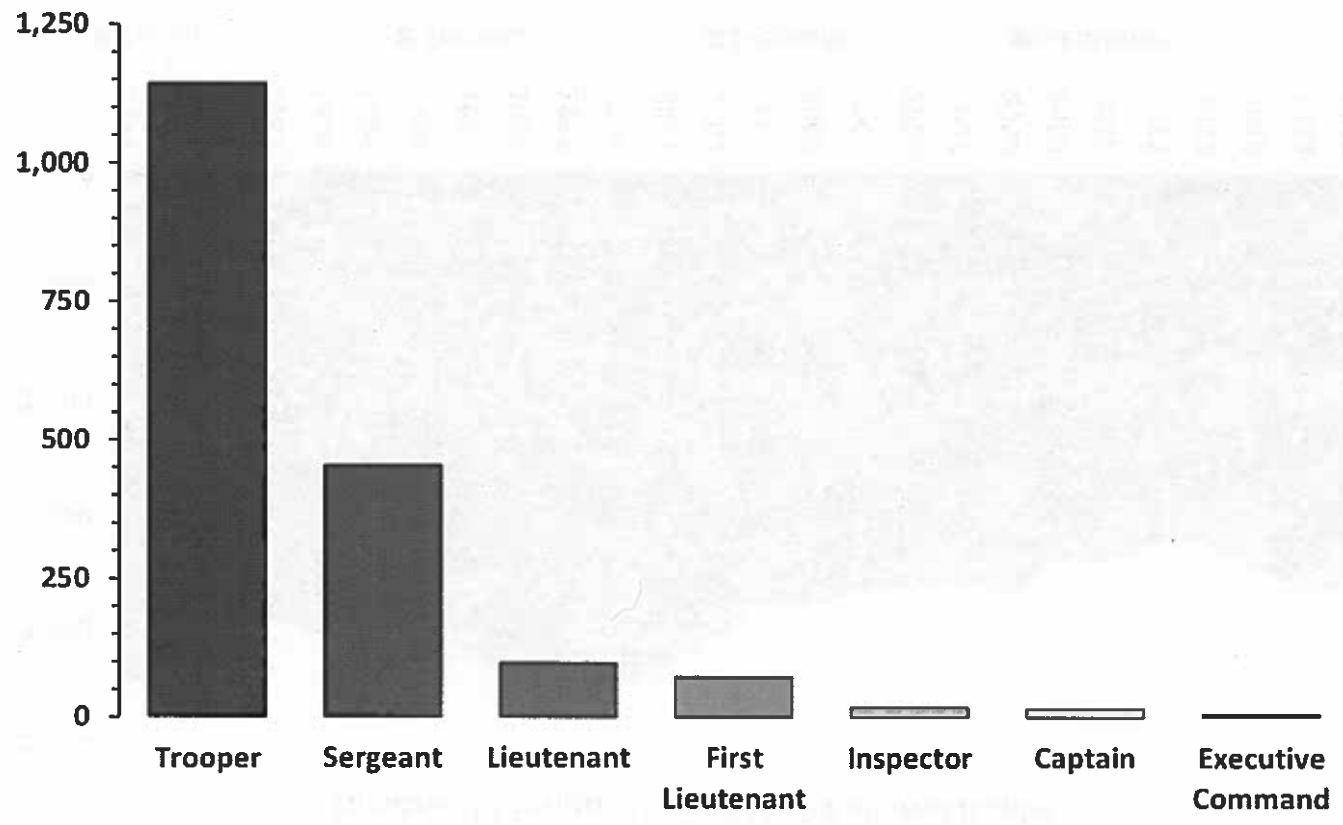


Strength and Composition of State and Local Law Enforcement Officers within Michigan and among the Great Lakes States

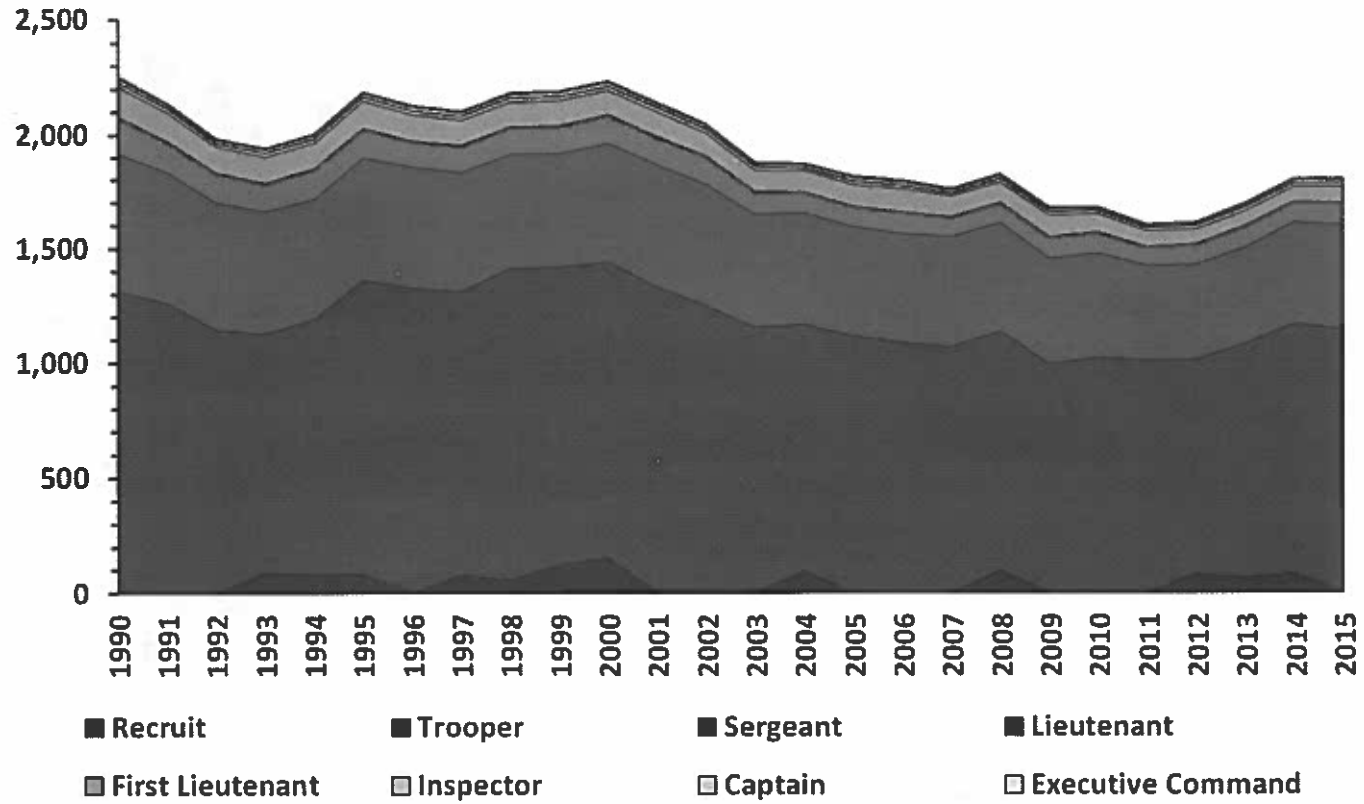
**Paul B.A. Holland, Senior Fiscal Analyst
with Kent Dell, Fiscal Analyst**

- The memo presents an overview and analysis of the counts and composition of law enforcement officers employed within the State of Michigan and among the Great Lakes States.
- The analysis incorporates both the absolute number of law enforcement officers employed by various jurisdictions and the number of officers adjusted for population and land area over numerous years, dependent upon data availability.
- Data were provided by the Michigan State Police (MSP), the Michigan Commission on Law Enforcement Standards (MCOLES), and the Federal Bureau of Investigation's (FBI) Uniform Crime Reporting (UCR) Program.
- Analysis of law enforcement employment and deployment levels at manifold jurisdictional strata over multiple years and is intended to provide legislators with the historical context and existing conditions pertaining to officer employment and thereby better inform decisions concerning the allocation and evaluation of state resources to law enforcement operations.

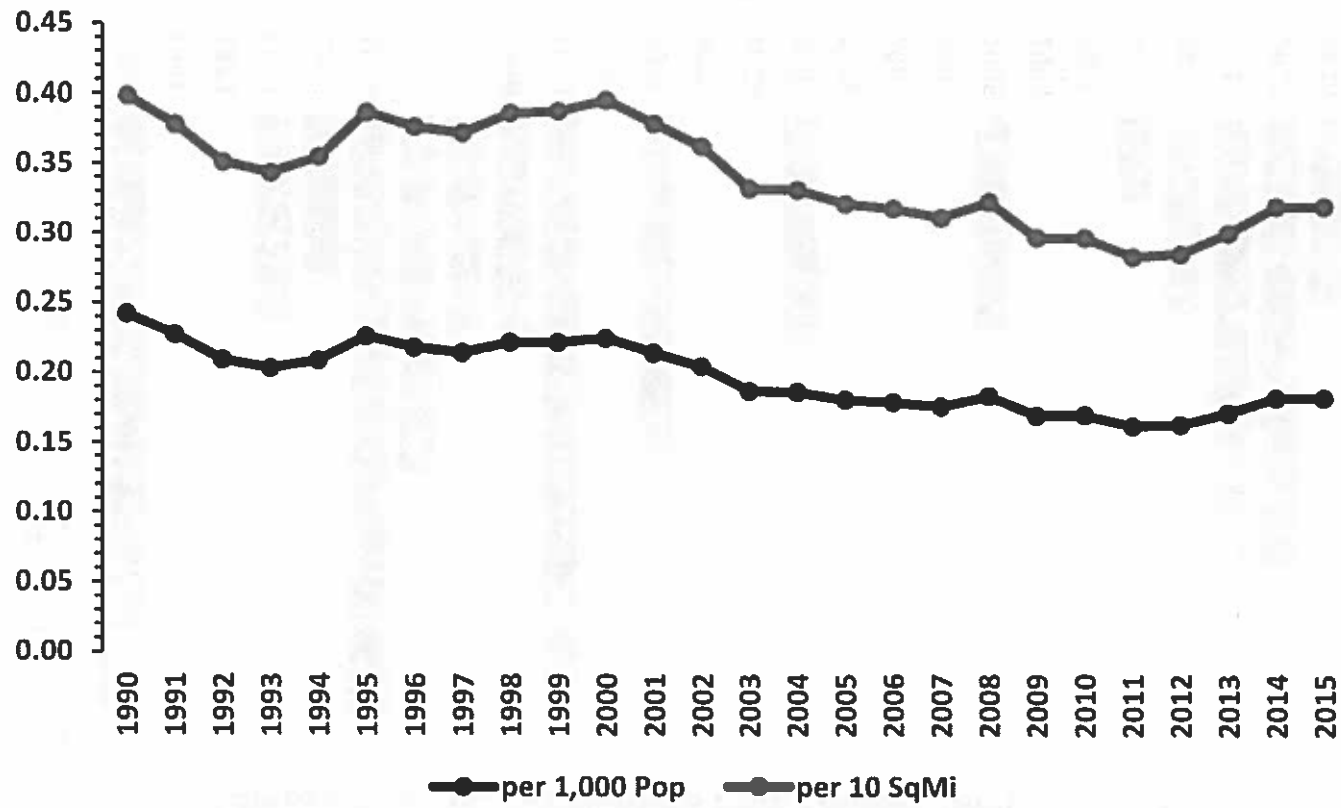
Composition of MSP Enlisted Ranks (2015)



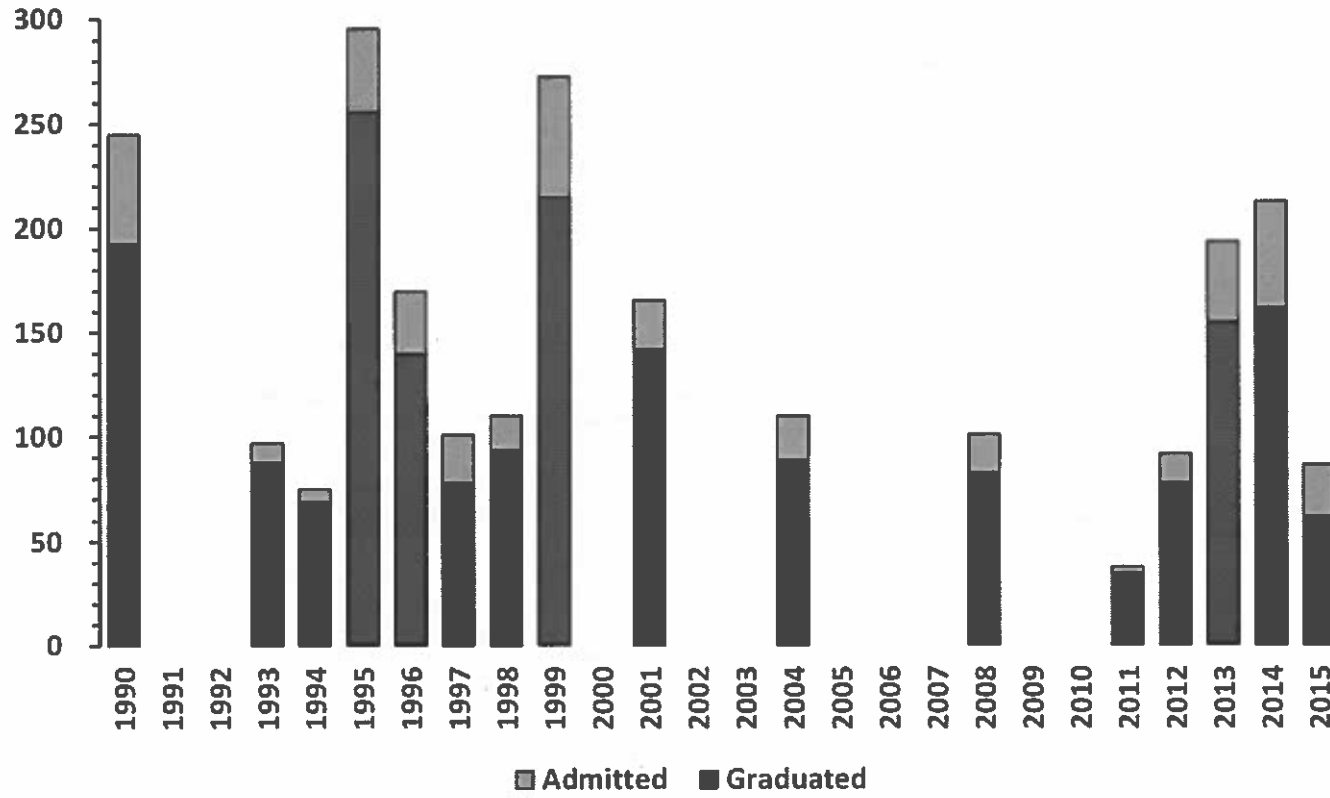
Historical Composition of MSP Enlisted Ranks



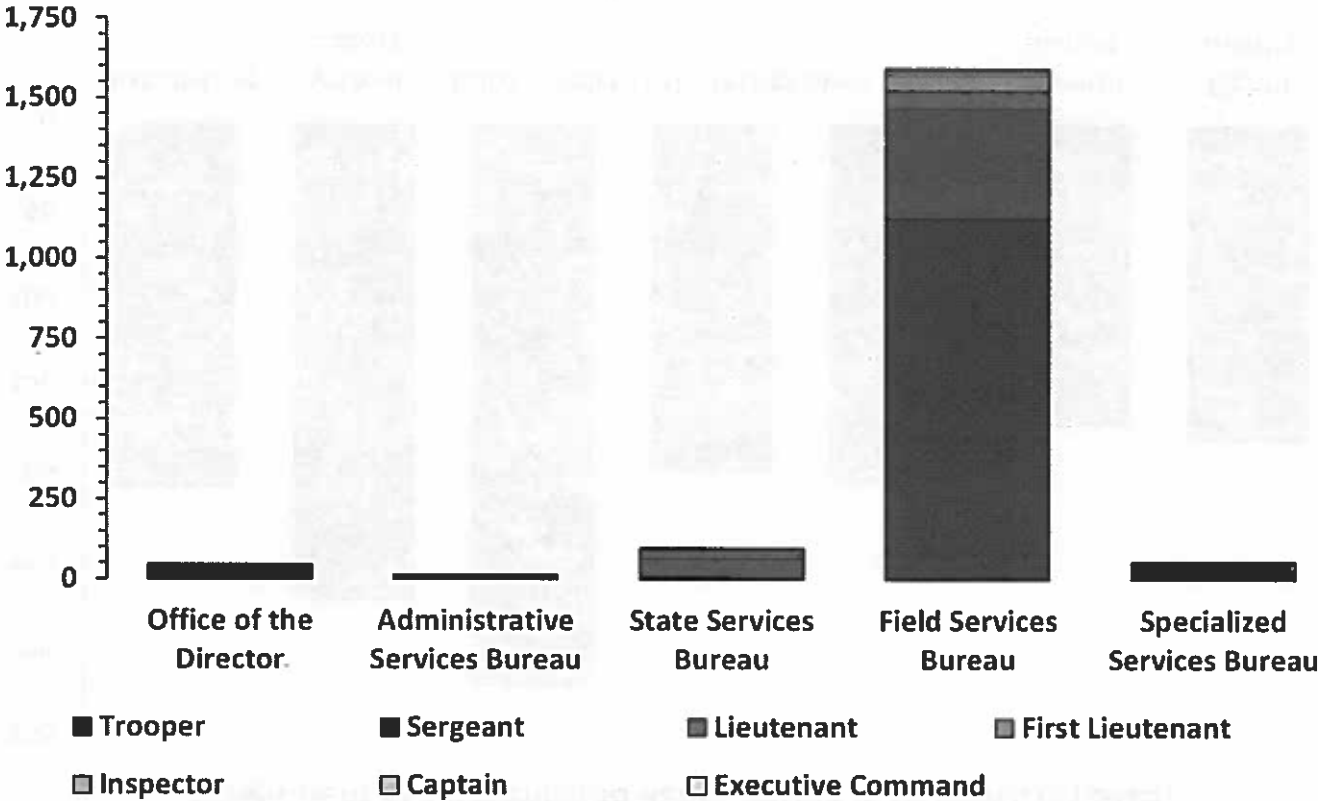
MSP Enlisted Ranks per Population & Land Area



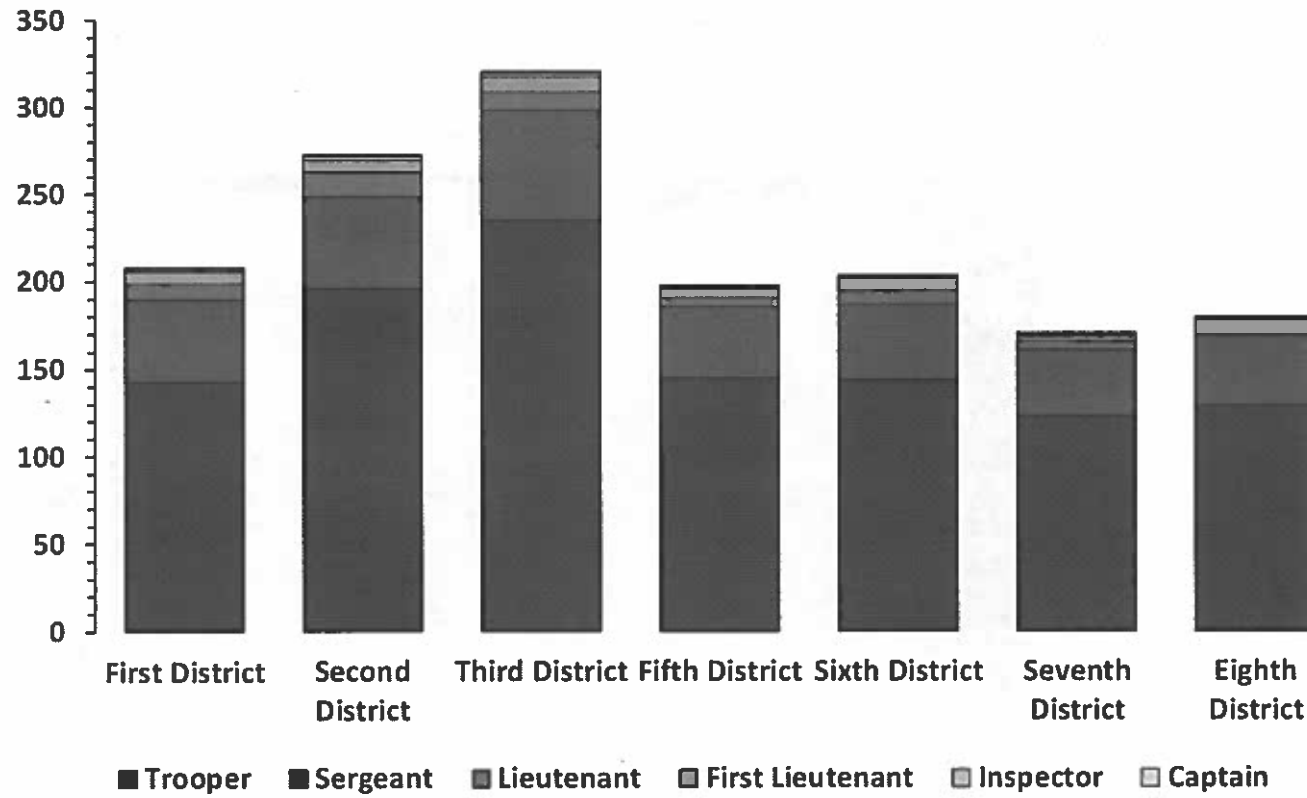
Admissions to and Graduations from Trooper Recruit Schools



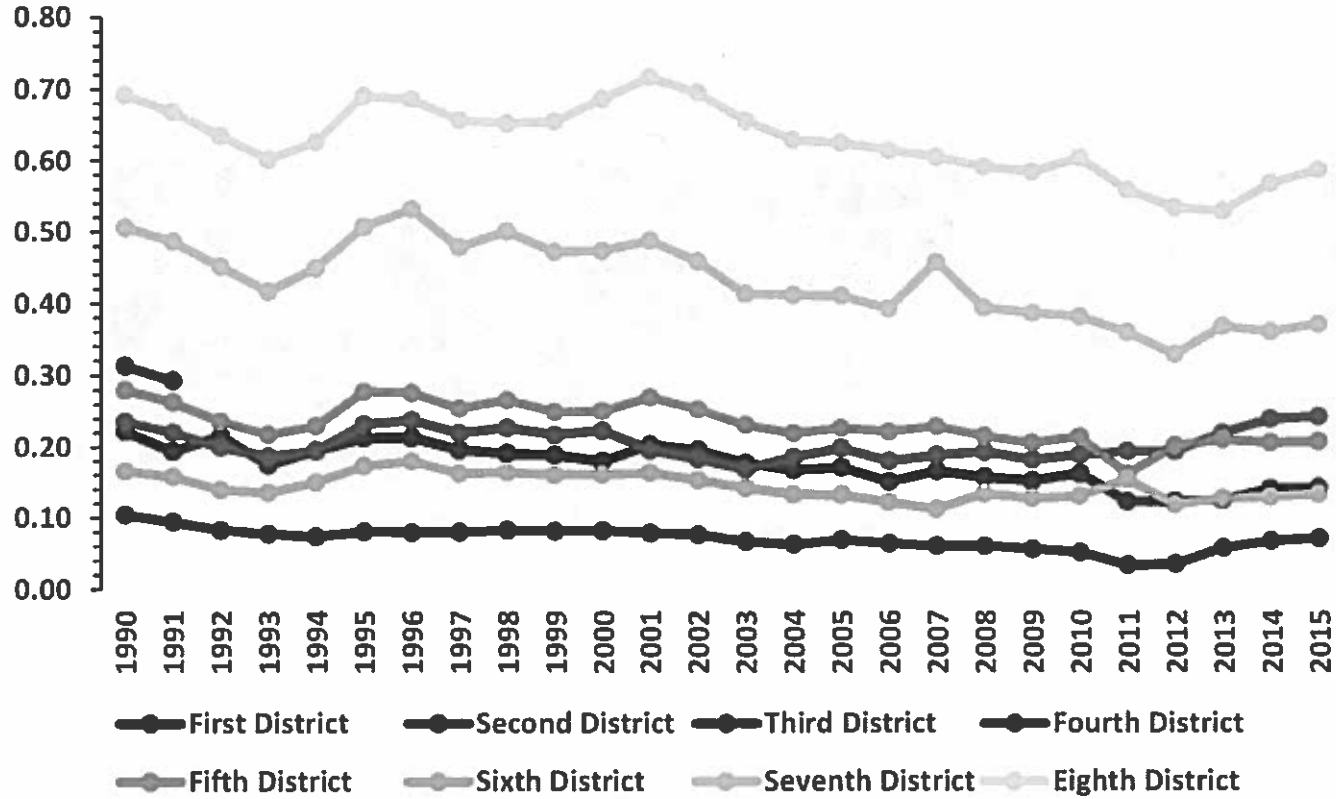
Assignment of MSP Enlisted Ranks (2015)



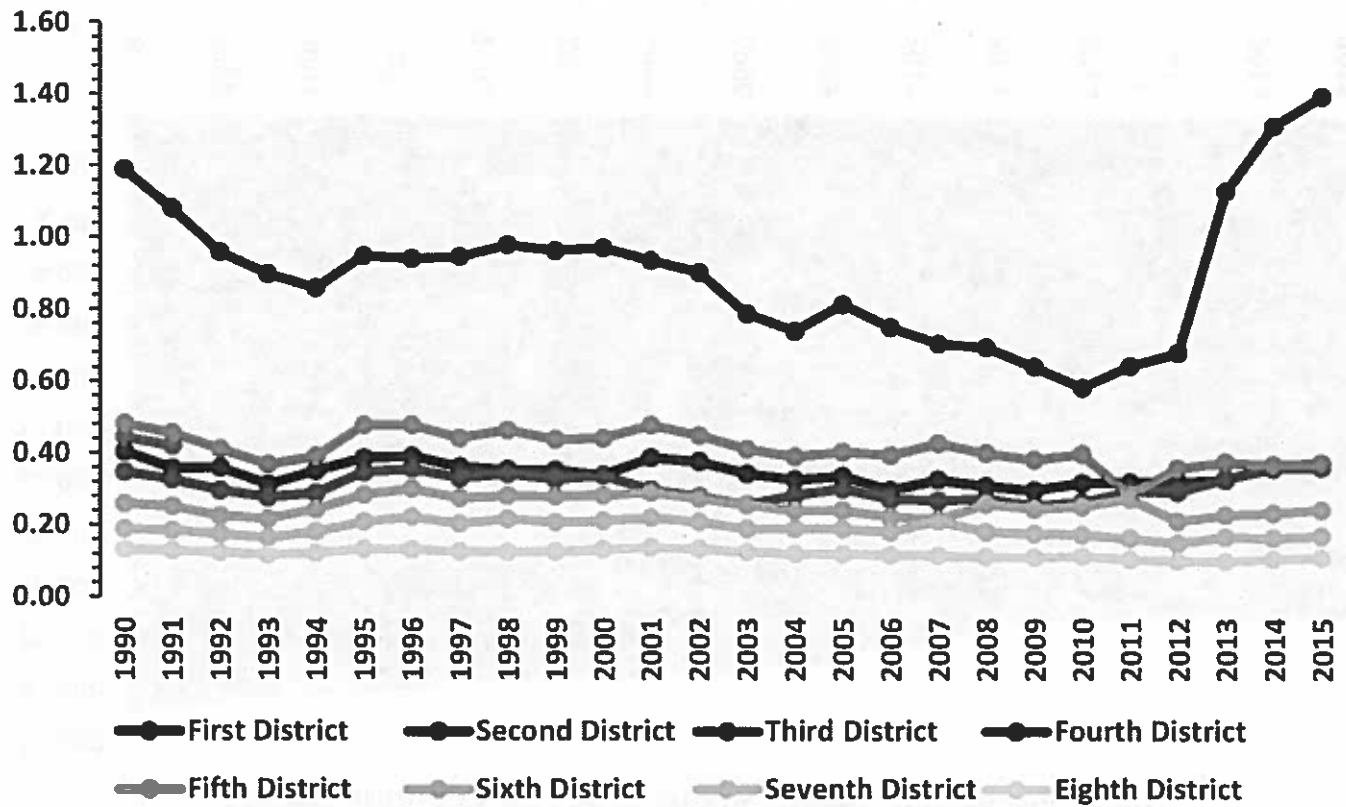
Assignment of MSP Enlisted Ranks within MSP Districts (2015)



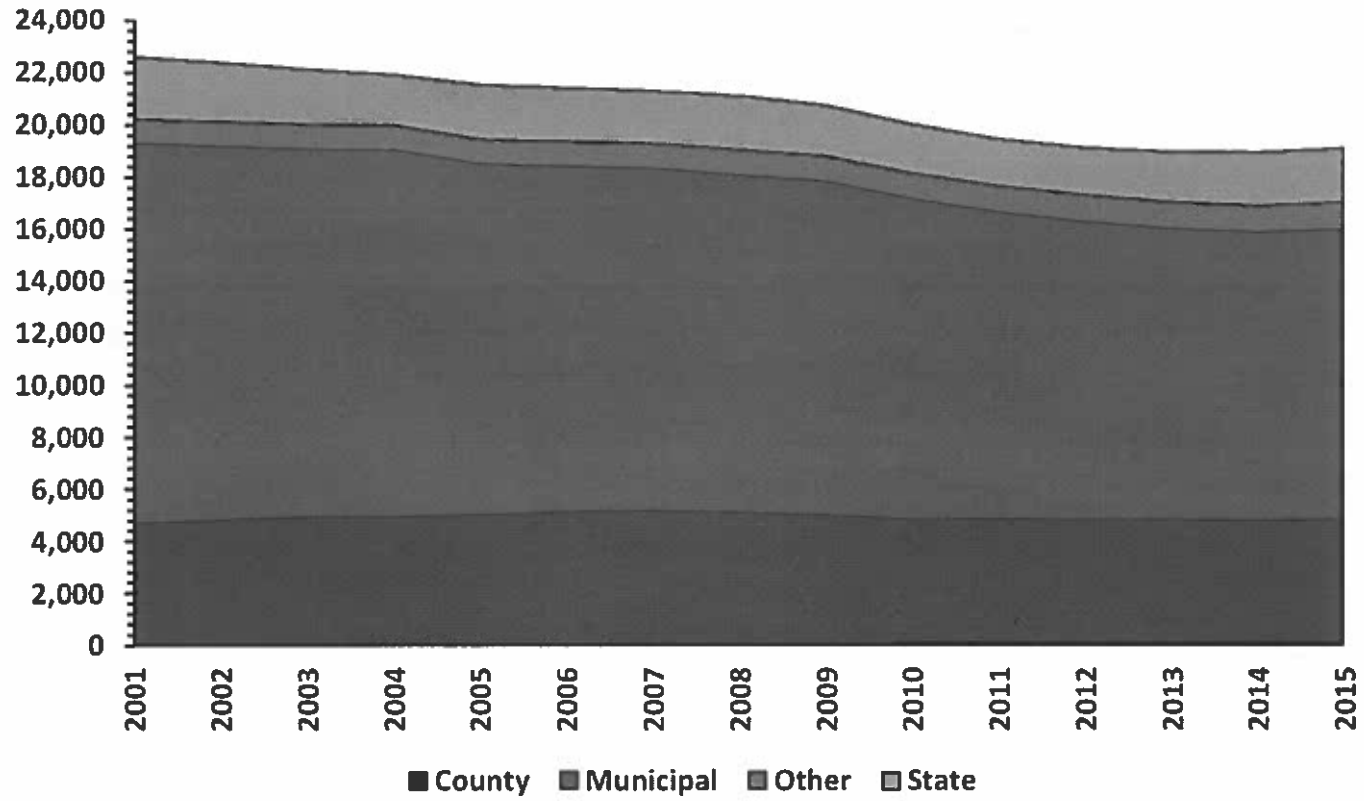
Deployment of Enlisted Ranks within MSP Districts per 1,000 People



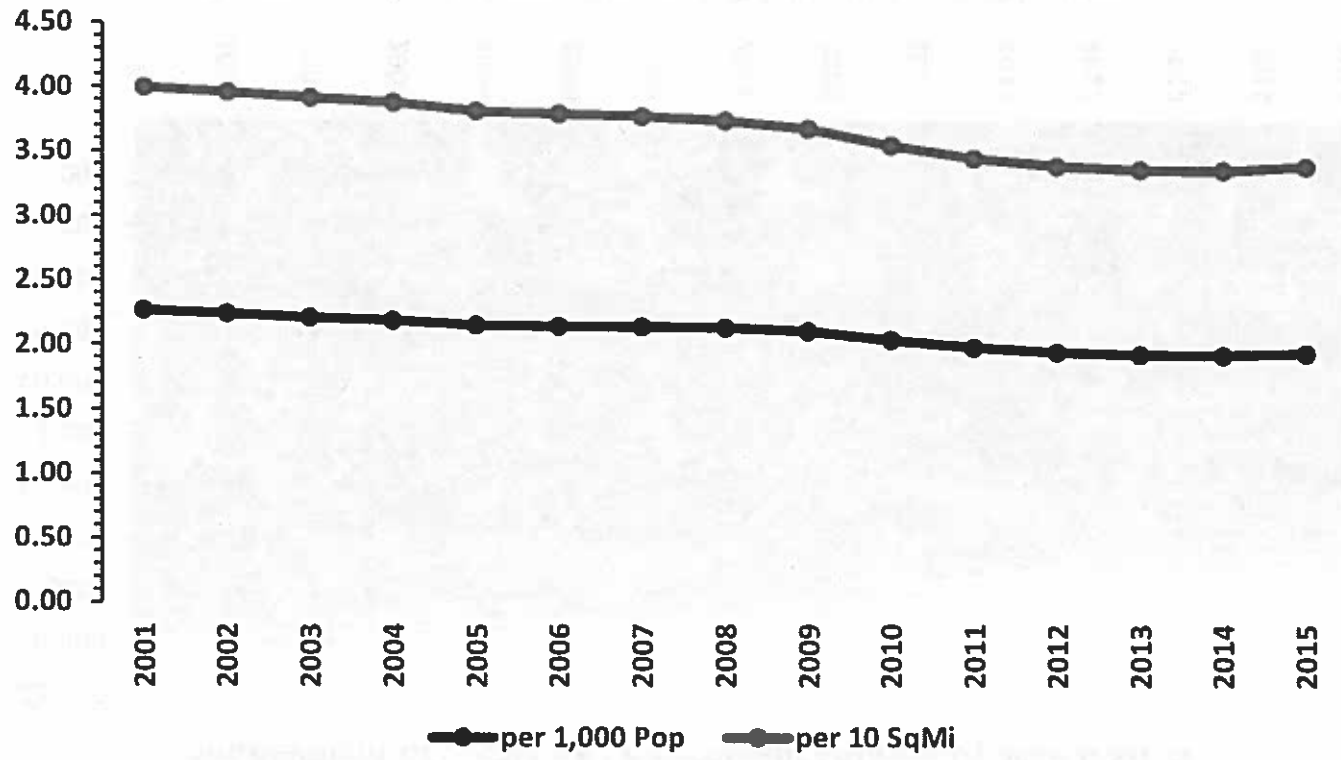
Deployment of Enlisted Ranks within MSP Districts per 10 Sq. Miles



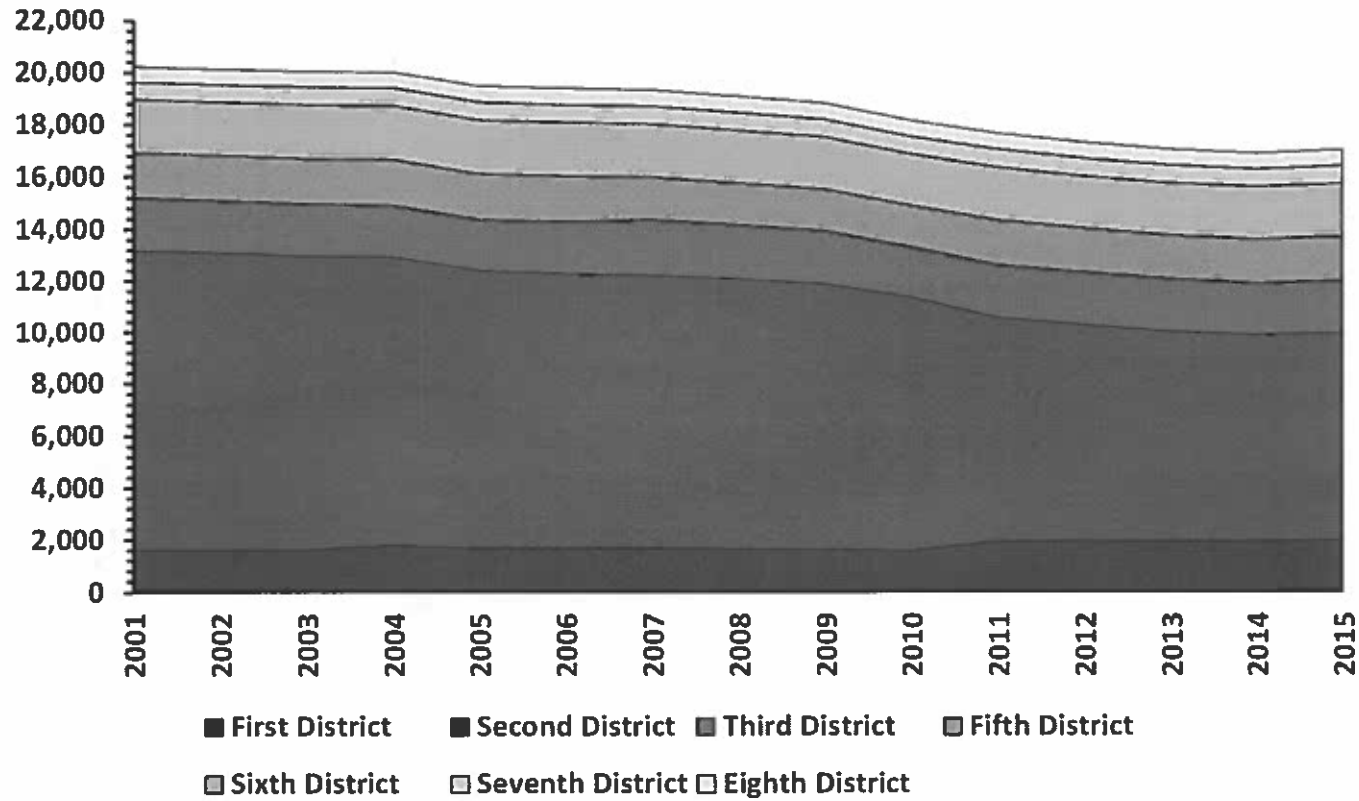
Composition of Law Enforcement Officers within Michigan



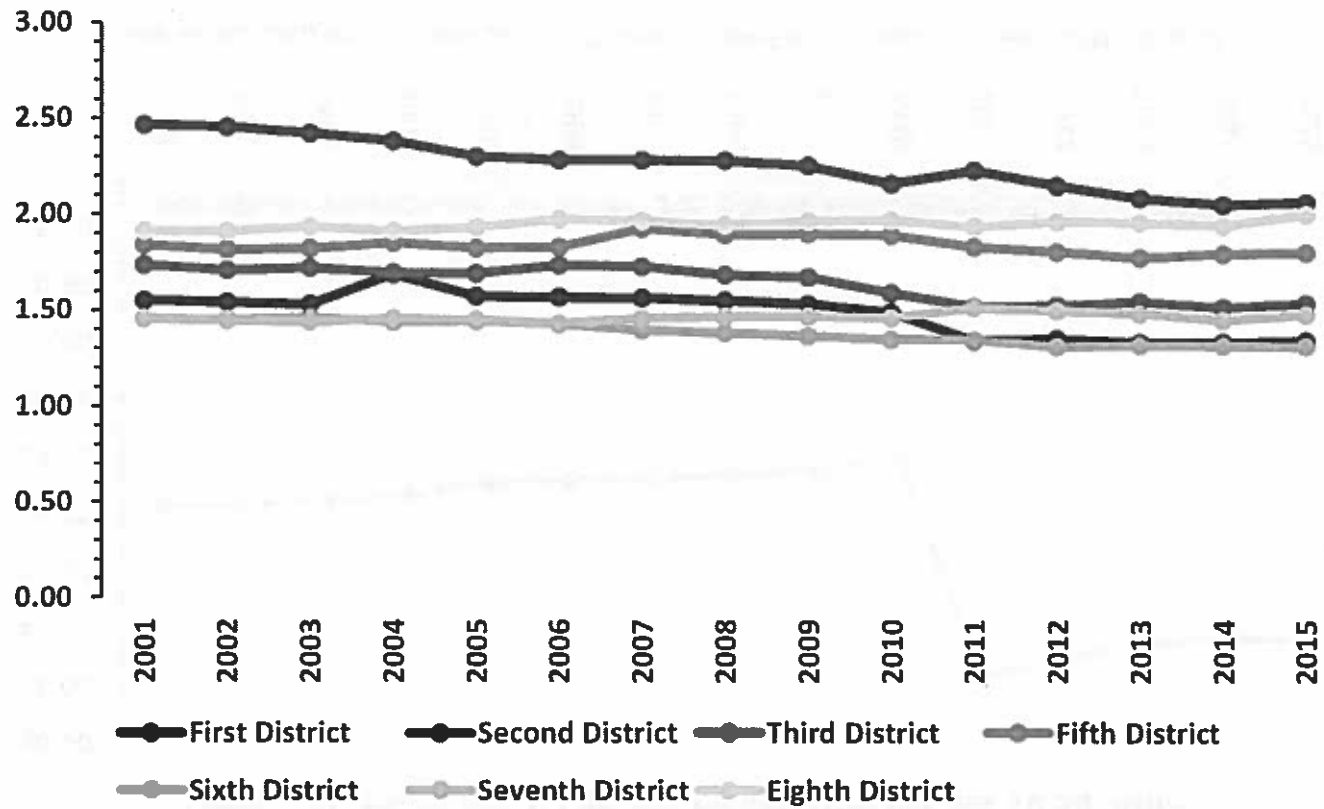
Law Enforcement Officers within Michigan per Population and Land Area



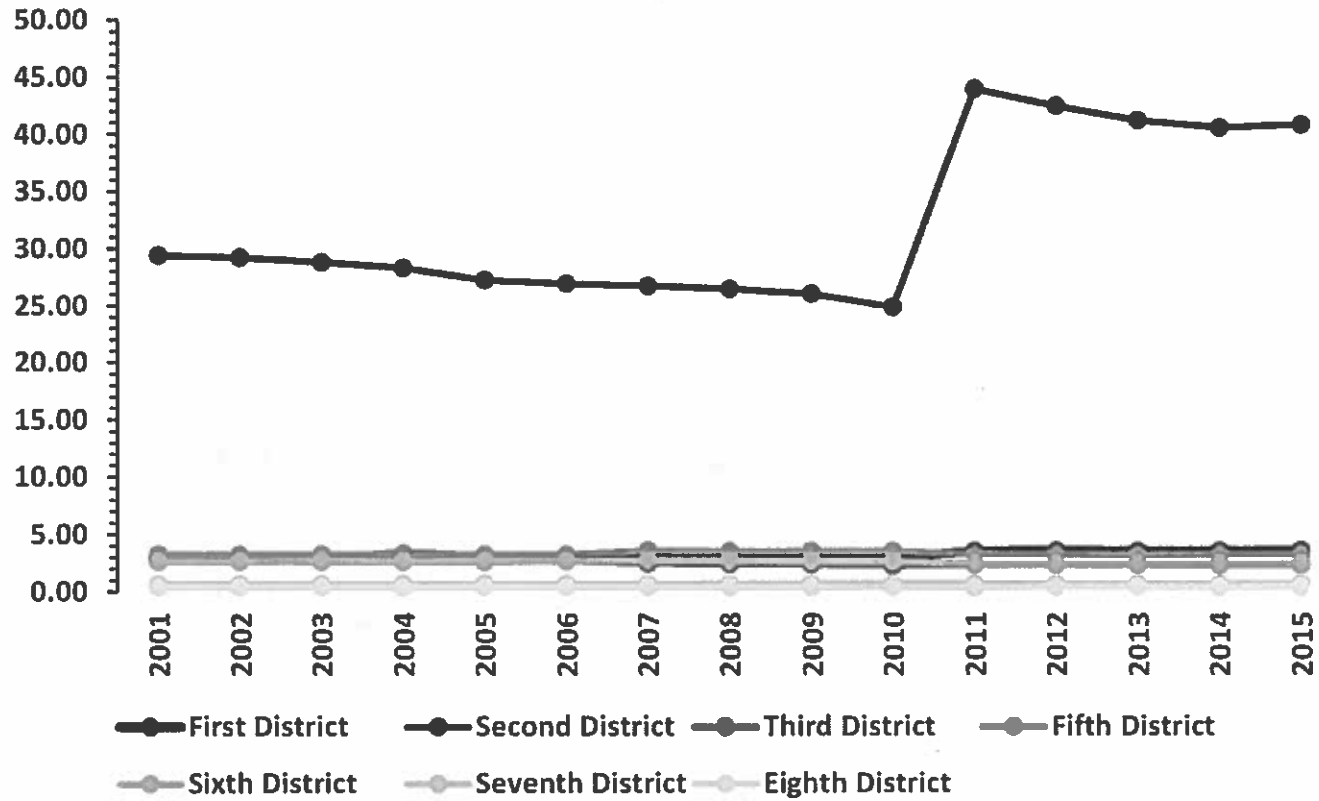
Employment of Local Law Enforcement Officers by MSP District



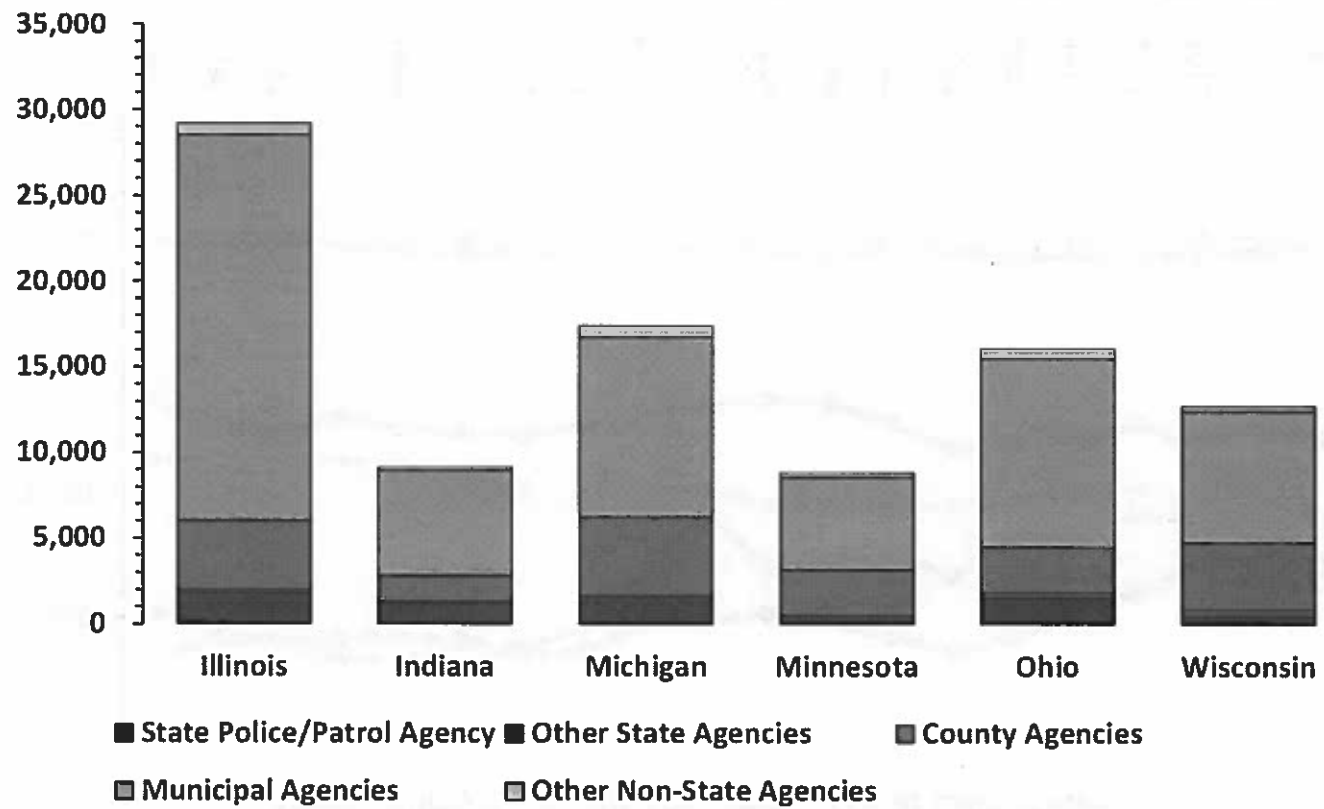
Local Law Enforcement Officers by MSP District per 1,000 People



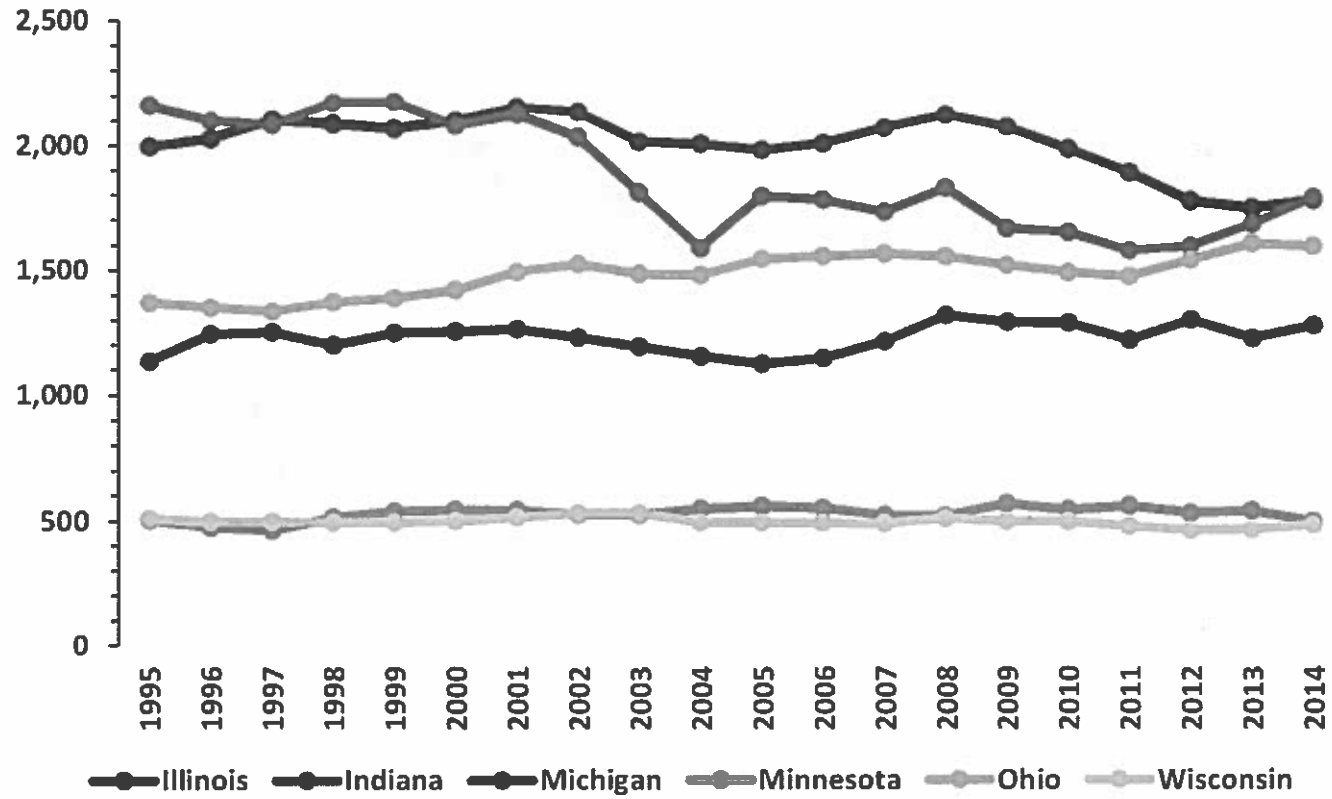
Local Law Enforcement Officers by MSP District per 10 Sq. Miles



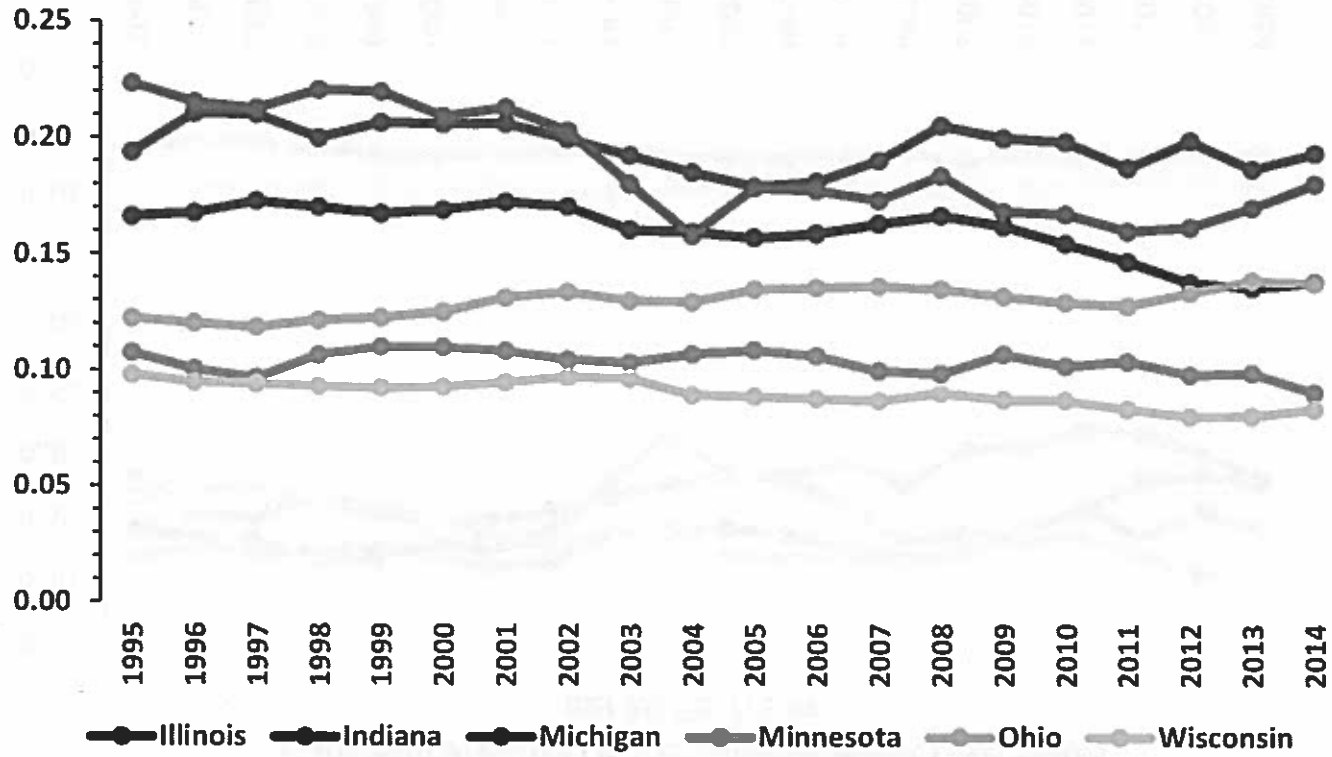
Composition of Officers among Great Lakes States (2010-14 AVG.)



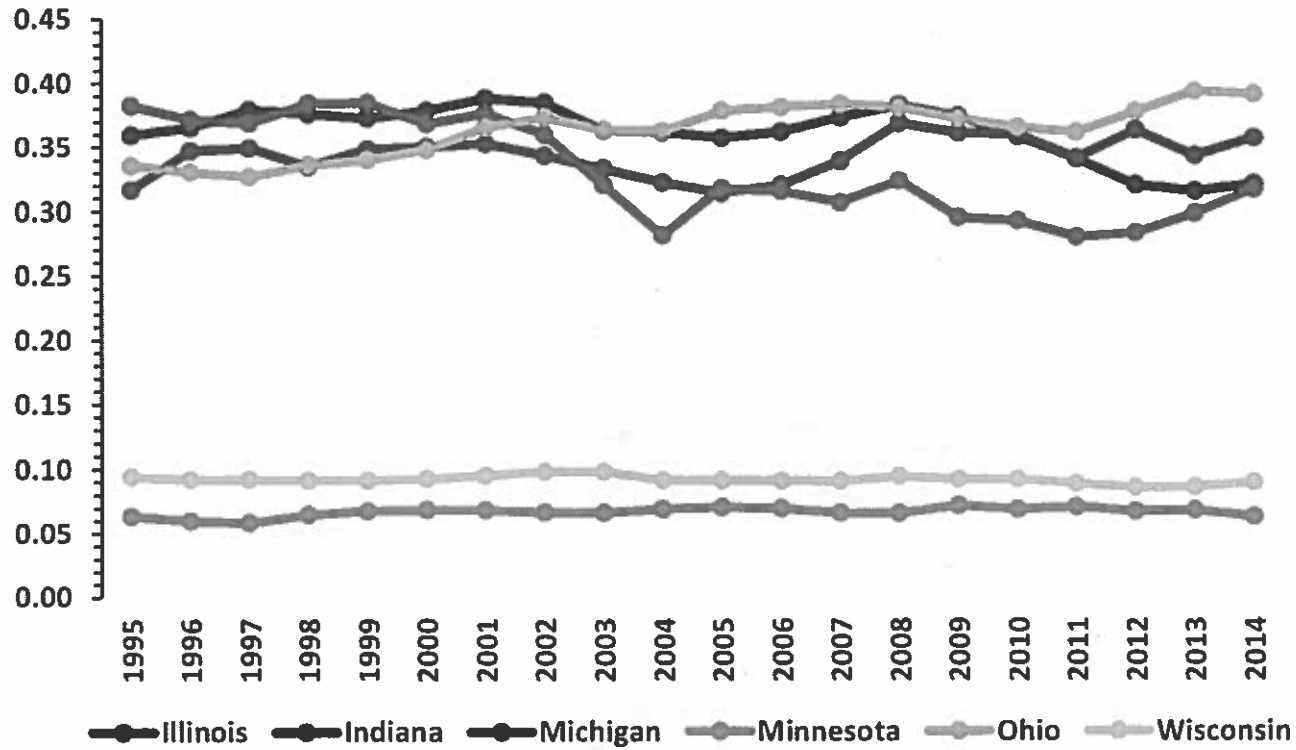
State Police/Patrol Officers among Great Lake States



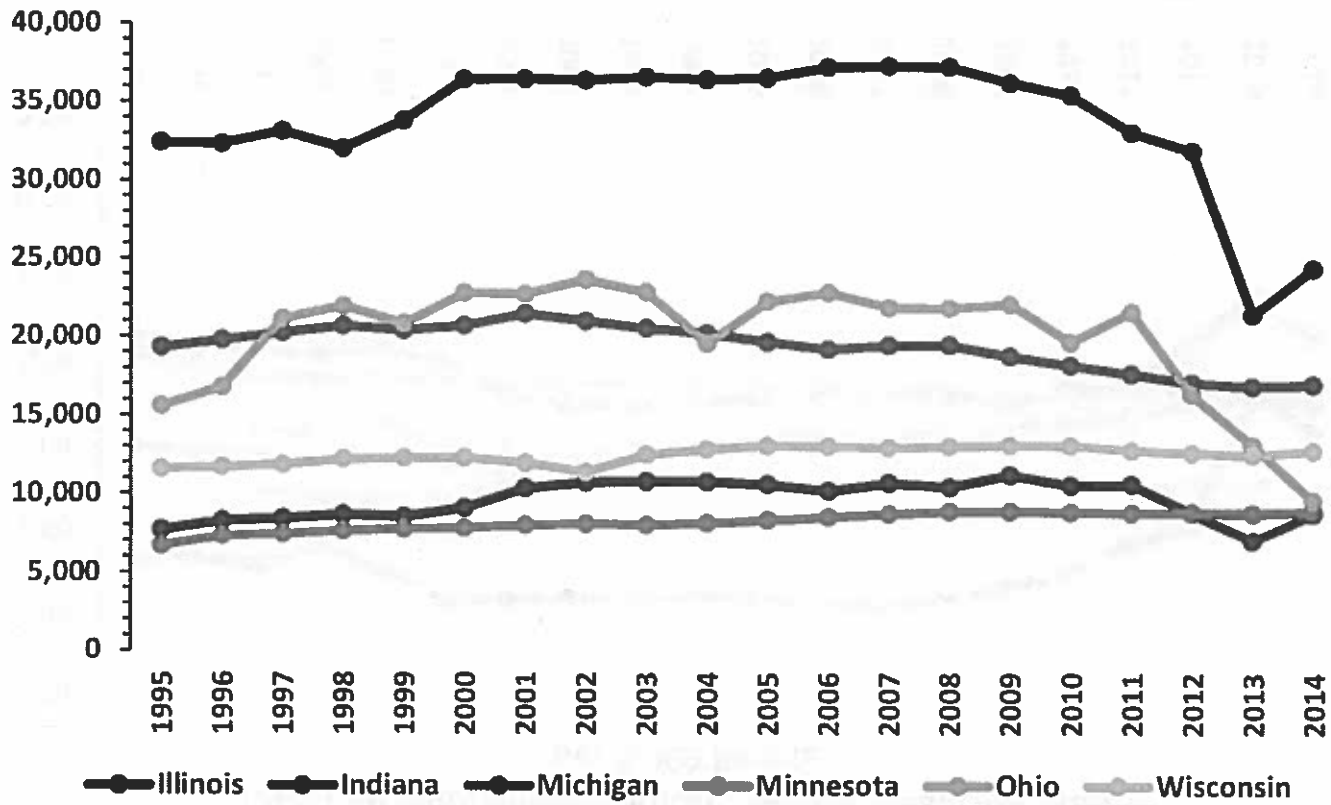
State Police/Patrol Officers among Great Lake States
per 1,000 People



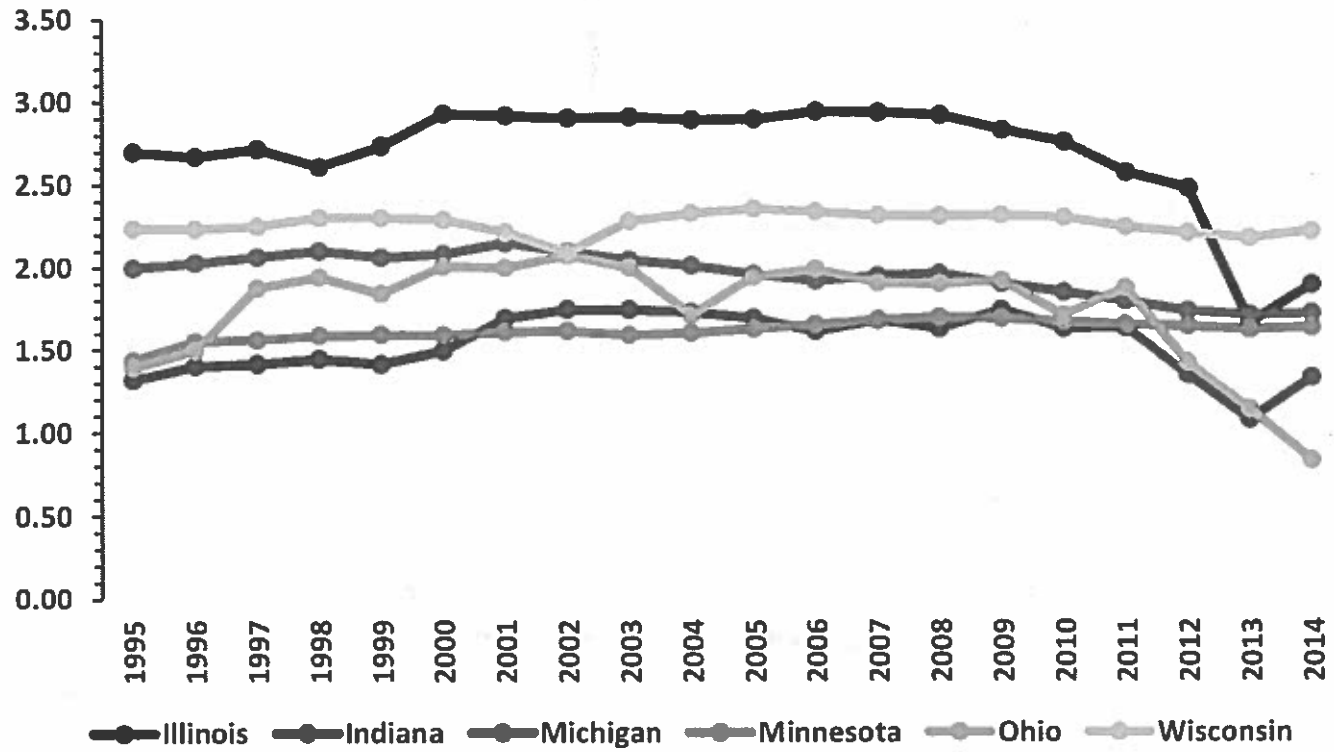
State Police/Patrol Officers among Great Lake States
per 10 Sq. Miles



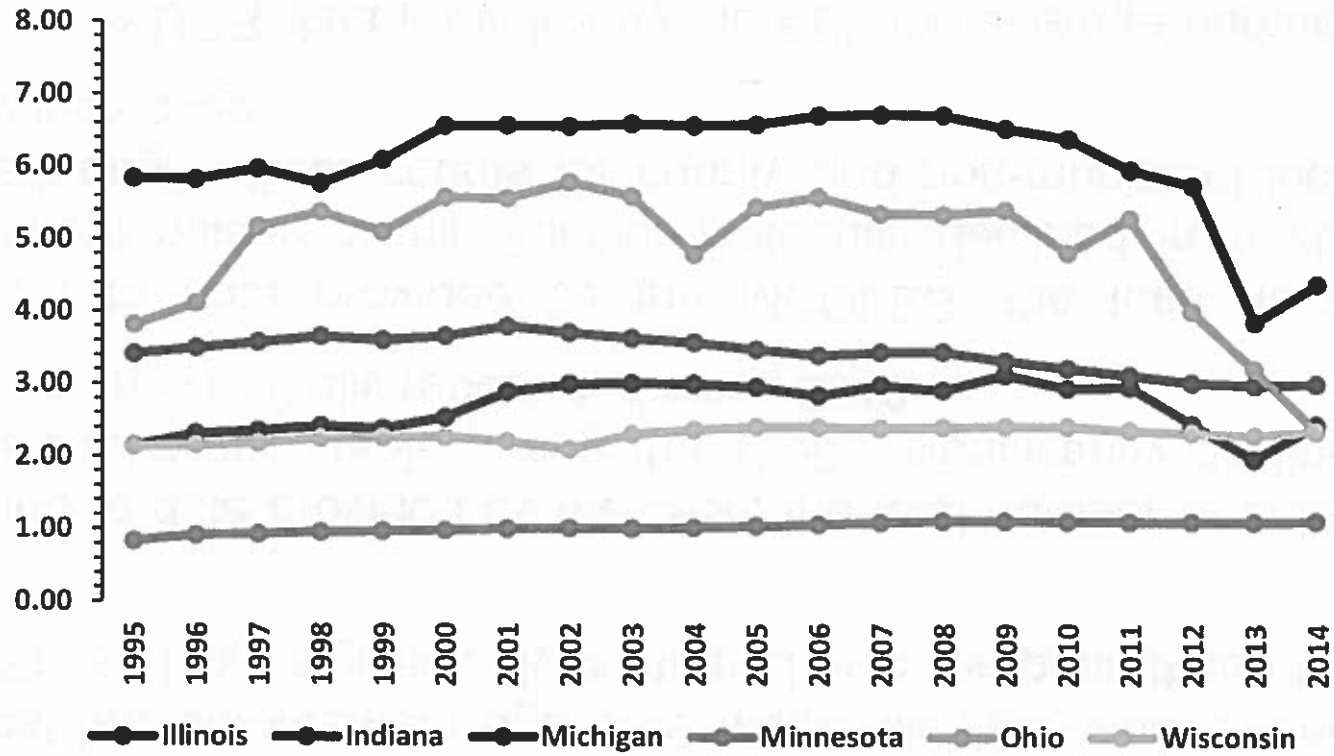
Total Law Enforcement Officers among Great Lake States



**Total Law Enforcement Officers among Great Lake States
per 1,000 People**



**Total Law Enforcement Officers among Great Lake States
per 10 Sq. Miles**



- The counts and composition of law enforcement officers employed by state and local law enforcement agencies within Michigan and among the Great Lakes States have significantly fluctuated over the past fifteen to twenty-five years.
- According to data provided by the MSP, the total number of enlisted officers remained relatively stable during the 1990s, significantly declined over the 2000s, and has partially rebounded since 2010.
- According to data provided by the MCOLES, the total number of law enforcement officers within Michigan steadily declined from 2001 through 2014, although officer counts for county and non-municipal local agencies actually increased.
- According to UCR data provided by the FBI, the average number of officers employed by all types of agencies among the Great Lakes States rose into the mid-aughts before falling to its lowest amounts on record.

Thank You.



Suddenly, and to Rodney's horror, the police arrived with nerd-sniffing dogs.

Questions?