



Testimony and Presentation

Michigan House of Representatives
Appropriations Subcommittee on Transportation
May 7, 2025



Presenters Today



Andrew Schepers
Regional Manager,
Government and
Public Affairs, Holcim
US



Chuck Hriczak
Director of Marine
Operations, Holcim US



Kyle Burleson
Director, State Advocacy
American Waterways
Operators

Agenda

- Provide an Overview of Michigan's Maritime and Port Activity and Infrastructure.
- Provide insights on Holcim's use of Michigan's Great Lakes
- Review the Michigan Maritime and Port Assistance Fund



Marine Operations: Great Lakes & East Coast

A “30,000 ft” Overview

February 2025



Great Lakes and East Coast Marine Operations Team



Marine Operations: Great Lakes



Great Lakes Network Overview

- Two plants (Alpena & South Chicago)
- 1.87M mt of product moved / \$34.7M in transportation spend in '24
- 11 water terminals
- 3 owned vessels (US-flag)

Key Contacts

- John Tomshack (Modal/Scheduling Manager)
- Sally Snarks (Senior Analyst)

Key Partners

- Andrie Inc.
- Inland Lakes Management (ILM)
- Current 10 yr operating contract runs through 2026 season

Full Year (2024)	Volume (kmt)	Spend (kUSD)	Miles	Gallons	Cost / Ton	Gal / Mi
SS Alpena	729	14,325	48,840	1,285,666	\$ 19.65	26.3
GLO/Integrity	528	9,254	37,311	834,229	\$ 17.53	22.4
SDC/Innovation	610	11,092	42,632	991,969	\$ 18.18	23.3
	1,867	34,671	128,783	3,111,864	\$ 18.57	24.2

Great Lakes, Owned Assets

Two Tug/Barge Units and One 83(!) Year Old Steamship

Gary Ostrander (GLO) and Integrity



Samuel De Champlain (SDC) and Innovation



SS Alpena (SSA)



Great Lakes, Owned Assets (cont.)

Loading of the SS Alpena



Model Built to Commemorate 80th Birthday



Marine Operations: East Coast



East Coast Network Overview

- Two plants (Ravena & Sparrows Point)
- ~1.1M mt of product moved / \$26.1M in transportation spend in '24
- 7 water terminals
- Four barges on full-time charter

Key Contacts

- Ethan Rost (Modal/Scheduling Manager)
- Sally Snarski (Senior Analyst)

Key Partners

- Dann Marine Towing: owns and operates all four barges
- CT1801/CT1802 contracts run through the 2032 season
- CT5300/CT7700 contracts run through the 2035 season

Full Year (2024)	Volume (kmt)	Spend (kUSD)	Miles	Gallons
CT 5300	324	5,834	15,614	354,397
CT 7700	238	5,390	18,305	381,051
CT 1801	267	7,335	15,926	474,767
CT 1802	255	7,529	16,926	533,208
	1,084	26,088	66,771	1,743,423

Cost / Ton	Gal / Mi
\$ 18.01	22.7
\$ 22.65	20.8
\$ 27.47	29.8
\$ 29.53	31.5
\$ 24.07	26.1

East Coast, Chartered Assets

Four Tug/Barge Units

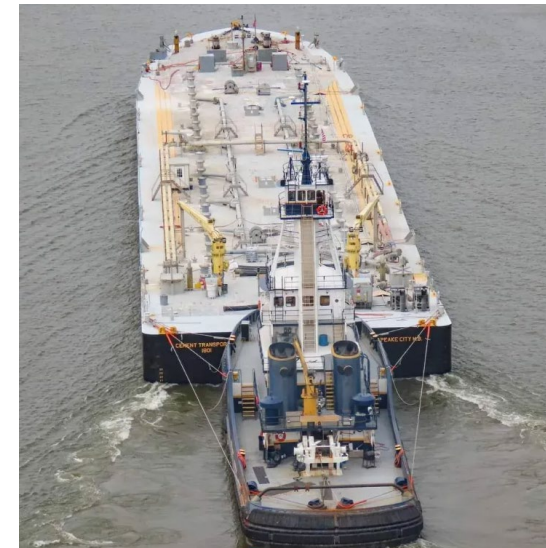
CT5300



CT7700



CT1801 + CT 1802

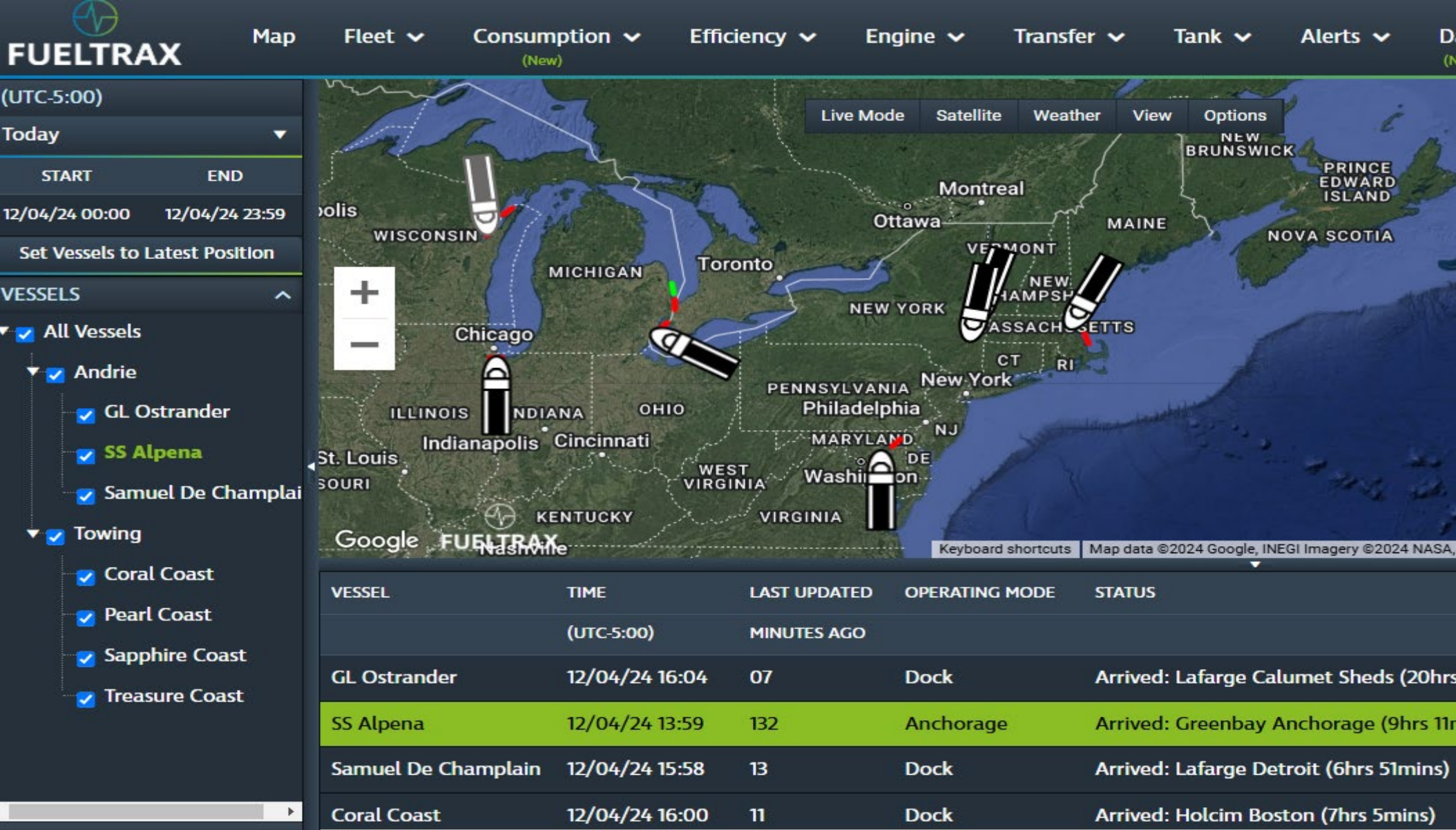


Shipping Schedule - East Coast and Great Lakes

Save Sched		U. S. FLEET																						
		CT1801					CT1802					CT5300					CT7700					Tons		
DAY		Port	Trip #	ETA	T1	Y2	Port	Trip #	ETA	T1	Y2	Port	Trip #	ETA	T1	Y2	Port	Trip #	ETA	T1	Y2	Ravena	Vessel	Slag
Fri	20-Dec	Sparrows F	#25	15:00		9500																		9500
Sat	21-Dec						Brooklyn		6:00		1						Brooklyn		23:00	1800				
							New Haven		23:00	8000			Ravena	#71	7:00	4200				16:00	5000	4200	CT5300	
Sun	22-Dec																College PT							
Mon	23-Dec											Bayonne		14:00	4200									
Tue	24-Dec																Sparrows Point	#42	20:00		6000			6000
													Ravena	#72	7:00	4800						4800	CT5300	
Wed	25-Dec																							
		Bayonne		5:00		3500	Providence		6:00	4000														
Thu	26-Dec											College PT		23:00	4800									
Fri	27-Dec																							
Sat	28-Dec						Bayonne		19:00	2500							Bayonne		19:00		1500			
		Boston		5:00		6000							Ravena	#73	10:00	4800		College PT		11:00	4500	4800	CT5300	
Sun	29-Dec																							
Mon	30-Dec																							
												College PT		3:00	4800									
Tue	31-Dec																Ravena	#43	13:00	6800		6800	CT7700	
Wed	1-Jan																							
													Ravena	#74	2:00	4800		Brooklyn		6:00	2800	4800	CT5300	
Thu	2-Jan																College PT		23:00	4000				
Fri	3-Jan	Ravena	#26	17:00	14500							College PT		18:00	4800							14500	CT1801	
Sat	4-Jan																							
Sun	5-Jan																Sparrows Point	#44	23:00		6000			6000

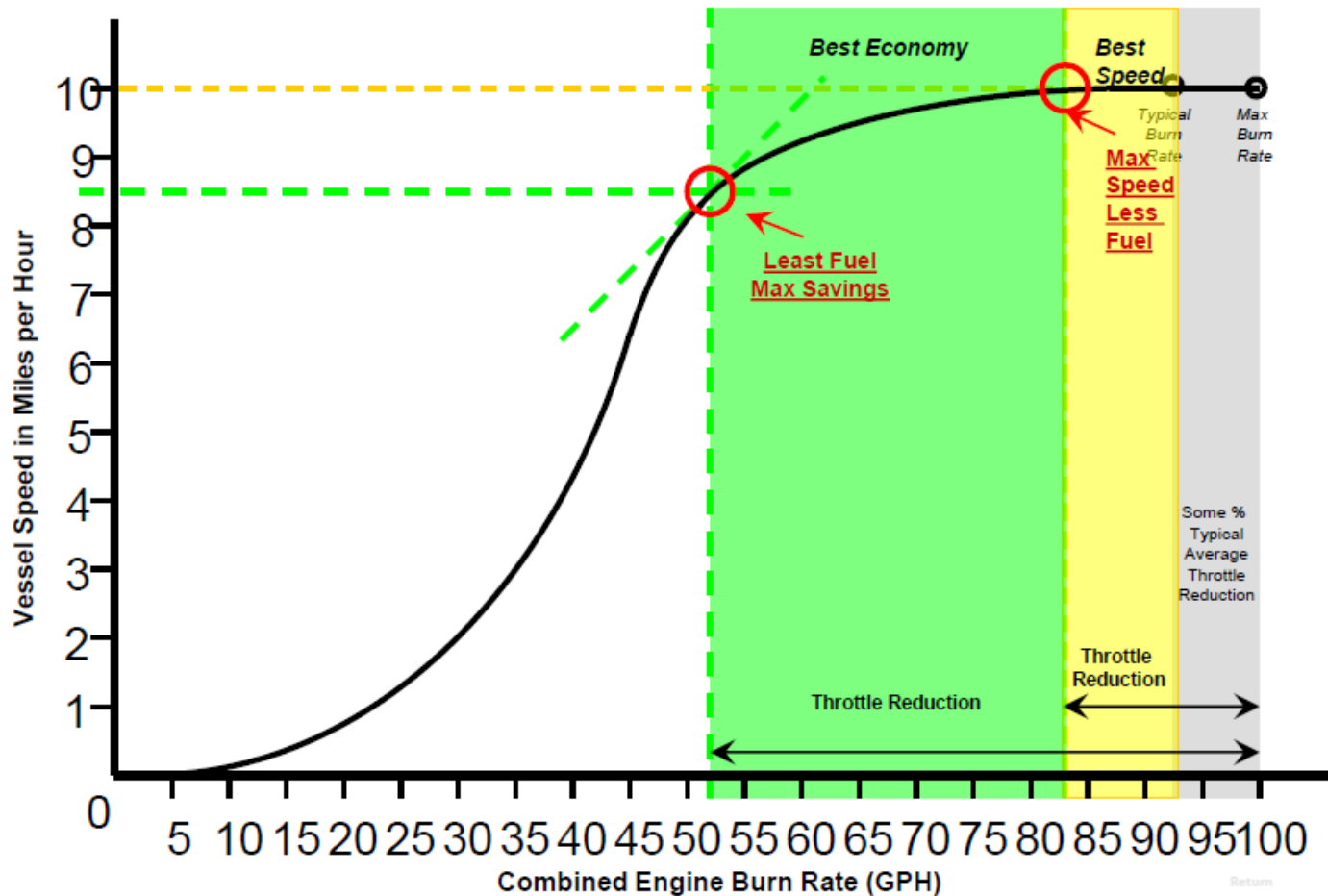
Bayonne		Brooklyn	College PT		New Haven		Providence
6,000	4,150	6,895	17,550	5,340	15,000	6,500	29,200
T1	SLAG	T1	T1	SLAG	T1	SLAG	T1
2,608	1,474	4,800	9,536	2,747	2,385	5,700	1,749
2,408	1,324	4,600	8,786	2,597	2,285	5,650	1,549
2,408	1,324	4,600	8,786	2,597	2,285	5,650	1,549
2,408	1,324	6,400	8,786	2,597	10,285	5,650	1,549
2,408	1,324	6,400	8,786	2,597	10,285	5,650	1,549
2,408	1,324	6,400	13,786	2,597	10,285	5,650	1,549
2,158	1,174	6,200	13,036	2,447	10,185	5,600	1,349
6,108	1,024	6,000	12,286	2,297	10,085	5,550	1,149
5,858	874	5,800	11,536	2,147	9,985	5,500	949
5,608	724	5,600	10,786	1,997	9,885	5,450	749
5,608	724	5,600	10,786	1,997	9,885	5,450	749
5,608	724	5,600	10,786	1,997	9,885	5,450	749
5,358	4,074	5,400	10,036	1,847	9,785	5,400	4,549
5,108	3,924	5,200	14,086	1,697	9,685	5,350	4,349
4,858	3,774	5,000	13,336	1,547	9,585	5,300	4,149
4,608	3,624	4,800	12,586	1,397	9,485	5,250	3,949
4,608	3,624	4,800	12,586	1,397	9,485	5,250	3,949
7,108	5,124	4,800	12,586	1,397	9,485	5,250	3,949
7,108	5,124	4,800	12,586	5,897	9,485	5,250	3,949
7,108	5,124	4,800	12,586	5,897	9,485	5,250	3,949
6,858	4,974	4,600	11,836	5,747	9,385	5,200	3,749
6,608	4,824	4,400	11,086	5,597	9,285	5,150	3,549
6,358	4,674	4,200	15,136	5,447	9,185	5,100	3,349
6,108	4,524	4,000	14,386	5,297	9,085	5,050	3,149
6,108	4,524	4,000	14,386	5,297	9,085	5,050	3,149
6,108	4,524	4,000	14,386	5,297	9,085	5,050	3,149
5,858	4,374	6,600	13,636	5,147	8,985	5,000	2,949
5,608	4,224	6,400	16,886	4,997	8,885	4,950	2,749
5,358	4,074	6,200	16,136	4,847	8,785	4,900	2,549
5,108	3,924	6,000	20,186	4,697	8,685	4,850	2,349
5,108	3,924	6,000	20,186	4,697	8,685	4,850	2,349
5,108	3,924	6,000	20,186	4,697	8,685	4,850	2,349
5,108	3,924	6,000	20,186	4,697	8,685	4,850	2,349
5,108	3,924	6,000	20,186	4,697	8,685	4,850	2,349

Fuel Monitoring - East Coast and Great Lakes



Fuel Monitoring - East Coast and Great Lakes (cont.)

How the Fuel Optimization works



Gallons Reduced and Dollars Saved 2024

Great Lakes

Gallons consumed = 3,111,864*
Reduced Gallons = 328,349
Avg CPG = \$2.88
Total Savings = \$944,328
Total Fuel Spend = \$10.111M

East Coast

Gallons consumed = 1,743,423
Reduced Gallons = 93,918
Avg CPG = \$2.79
Total Savings = \$262,064
Total Fuel Spend = \$4.776M

Michigan Maritime and Port Assistance Fund

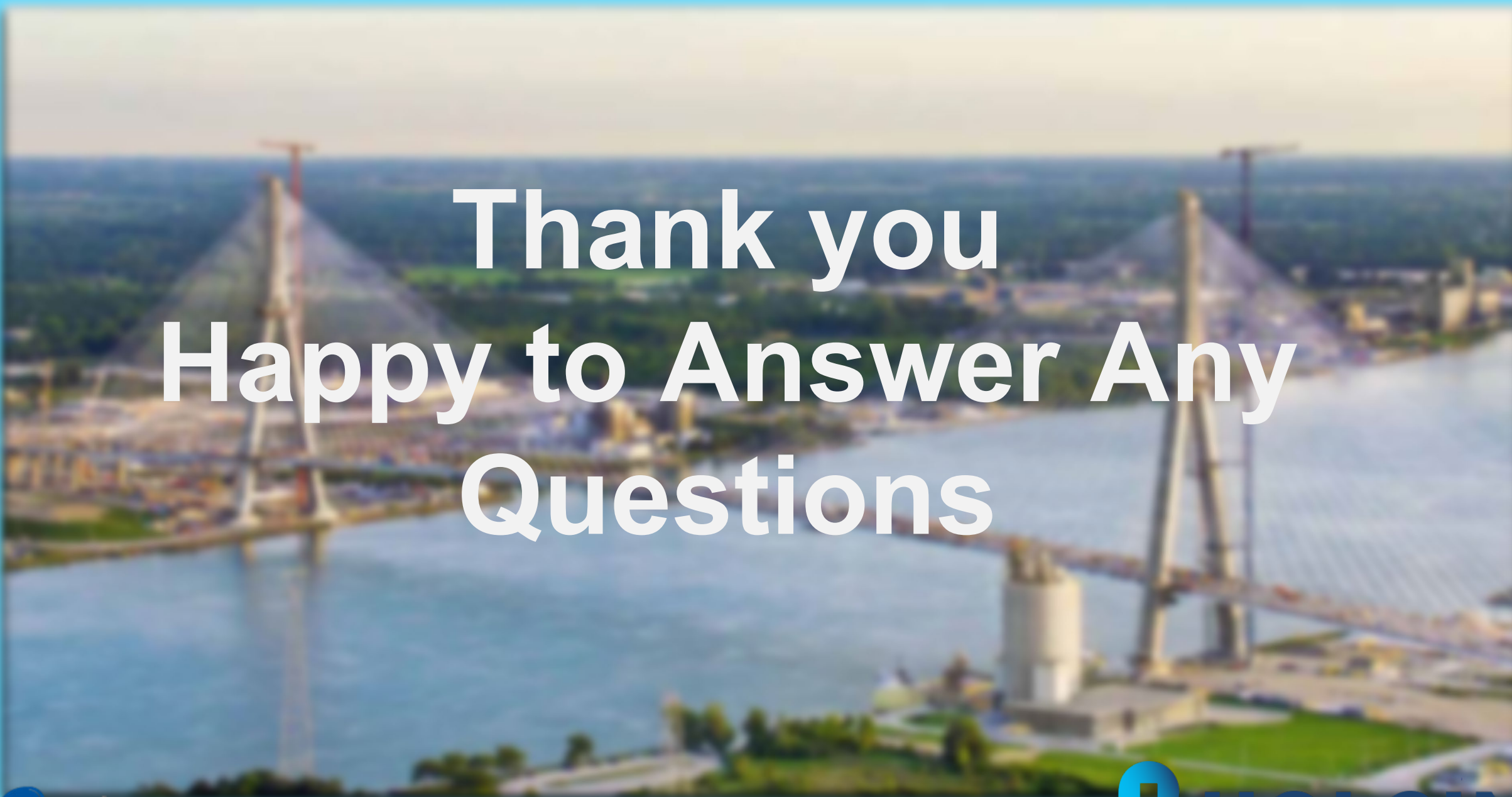
- **Signed into law in 2022, Senate Bill 744 and House Bill 5291 created Michigan's Maritime and Port Facility Assistance Office within MDOT and created a fund to assist operations and facilities around the state.**
- **Initial one time appropriation of \$5 Million was made to the program for FY 24.**
- **Allow the Office to award grants of not more than \$2.5 million per grant annually.**
- **Require a grant applicant to certify to the Office when applying that the applicant is currently in compliance with all State and Federal environmental laws or regulations applicable to the port facility.**

What Funding can be used for:

- Increasing the amount of direct port facility activity, including the amount or value of freight moving through the facility, or increasing the amount of overall maritime-related economic development or maritime-related transportation opportunities in the port facility's region.
- Achieving or improving green maritime certification.
- Matching Federal funding opportunities.
- Dredging waterways and harbors.
- Repairing seawalls.
- Transitioning to cleaner technology.
- Other projects related to port facilities as determined by the Office.

Our ask:

- **Create a line item in the transportation budget for the fund, finalizing the efforts of SB 744 and HB 5291.**
- **Fund the program to at least \$10 Million for the coming fiscal year.**



Thank you Happy to Answer Any Questions