

Michigan Sugar Company

Beet Washing & Screening Process



Beet Piles



Dry Screening



Stone Catcher



Spray Table



Fiber Screen



Flume Clarifier



Beet Chip Separator



Vibratory Screens



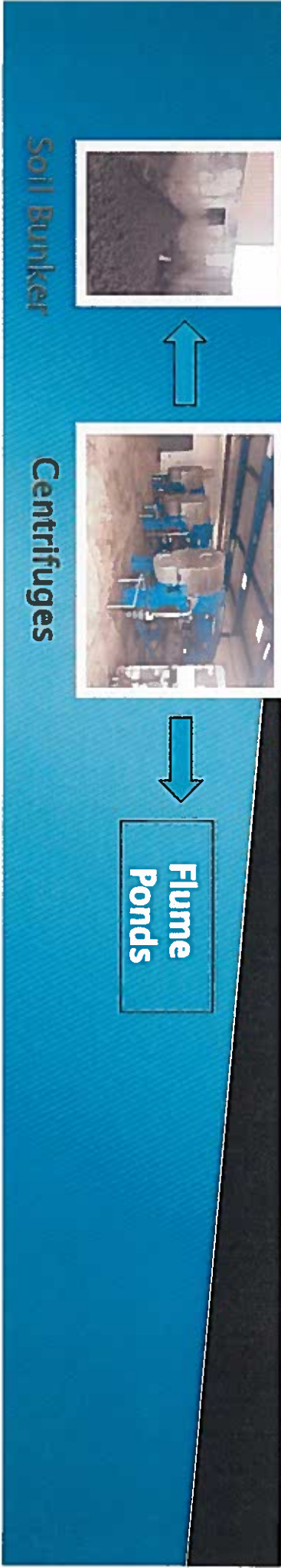
Soil Bunker



Centrifuges



Flume Ponds



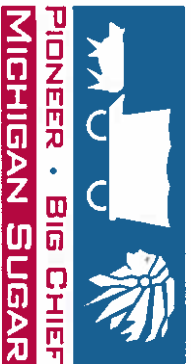


**PIONEER • BIG CHIEF
MICHIGAN SUGAR**

Michigan Sugar Company Spray Table



**On the spray
table, water is
used to
remove dirt
and other
particles from
sugarbeets.**



Michigan Sugar Company Beet Chip Separator



**In the
Beet Chip
Separator,
sugarbeet
chips are
separated
from
organic
material.**



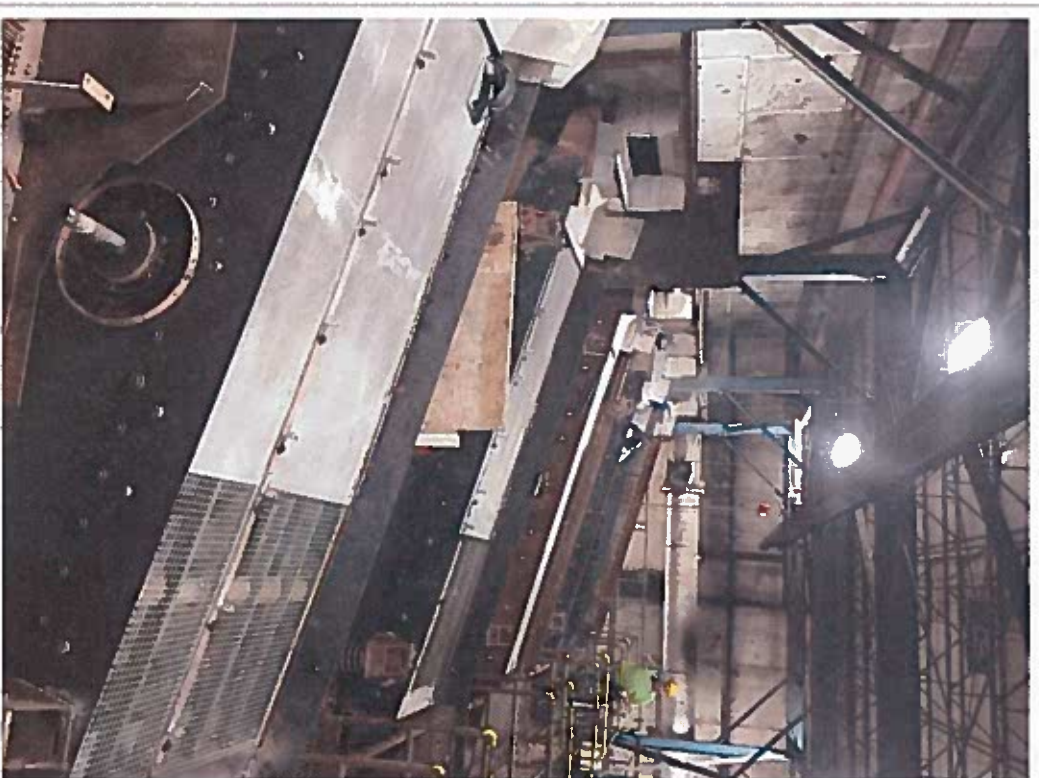


**PIONEER • BIG CHIEF
MICHIGAN SUGAR**

Michigan Sugar Company Vibratory Screens



**Michigan Sugar
Company has five
Vibratory Screens that
serve as a back-up to
the Beet Chip
Separator at the Bay
City factory.**





Michigan Sugar Company Vibratory Screens



Another view of the
Vibratory Screens at
Michigan Sugar
Company's Bay City
factory.





**PIONEER • BIG CHIEF
MICHIGAN SUGAR**

Michigan Sugar Company Fiber Screen Belts



Michigan Sugar Company has two Fiber Screen Belts at its Bay City factory. The photo on the right is intended to show screen size perspective.