

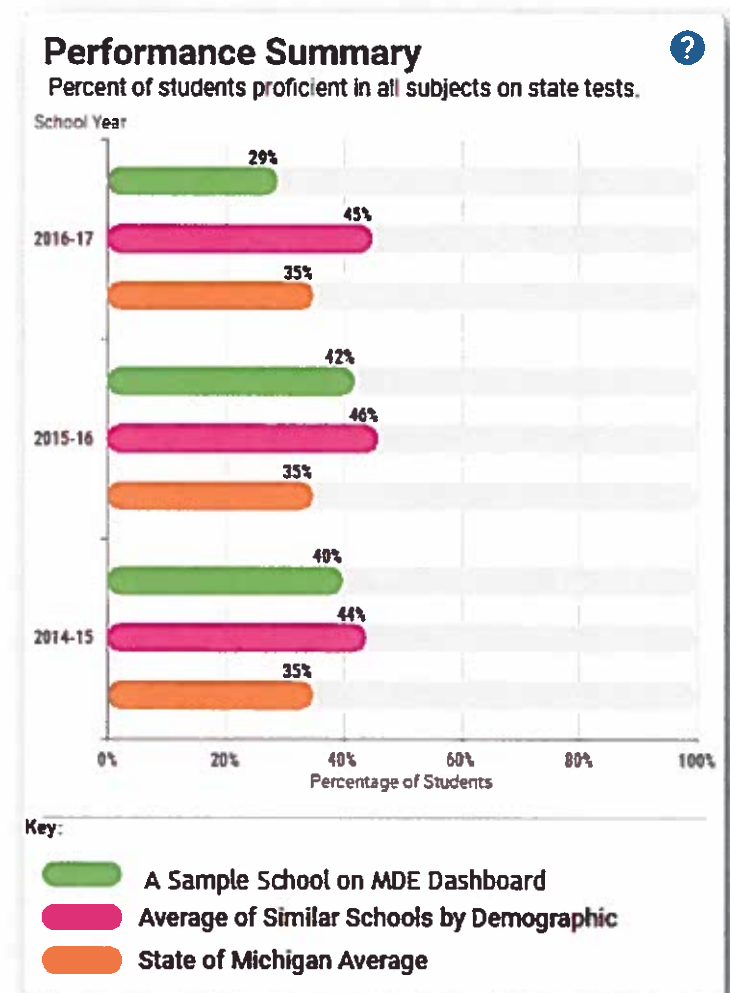
# HB 5526 – Fair and Equitable Approach to School Accountability

Chris Glass, West Michigan Talent Triangle

Doug Greer, Ottawa Area ISD

# Proposed Topics

- Why is this bill needed in light of MDE's Dashboard?
- Why do we need an *Education Accountability Commission* to align with the Dashboard?
- How does this bill guide the work of a commission to a transparent solution for school accountability?



# 2002-12, EdYes! and Adequate Yearly Progress



Elementary Reading Status				
Grade	Index Score Range	Number of Schools	Percent of Schools	Cumulative Percent of Schools
A	Above 311	210	13.1%	13.1%
B	307 – 311	341	21.3%	34.4%
C	298 – 306	647	40.4%	74.8%
D	294 – 296	160	10.0%	84.8%
F	Below 294	244	15.2%	100.0%

Elementary Mathematics Status				
Grade	Index Score Range	Number of Schools	Percent of Schools	Cumulative Percent of Schools
A	Above 537	354	22.1%	22.1%
B	537 – 528	409	25.5%	47.6%
C	528 – 513	590	36.8%	84.4%
D	513 – 506	111	6.9%	91.3%
F	Below 506	139	8.7%	100.0%

There Are 37 Possible Ways Schools Must Make AYP  
(Miss One Area and the School Does Not Make AYP)

Population	Reading Participation	Reading Achievement	Math Participation	Math Achievement	Other Indicator
All Students	Met	Met	Met	Met	Met
Native American	Met	Met	Met	Met	The other indicator for high schools is the graduation rate. The other indicator for elementary and middle schools is attendance rate. Additional indicator applies to the whole school.
Asian / Pacific Islander	Met	Met	Met	Met	
Hispanic	Met	Met	Met	Met	
Black	Met	Met	Met	Met	
White	Met	Met	Met	Met	
Students with Disabilities	Met	Met	Met	Met	
ELL	Met	Met	Met	Met	
FRL	Does Not Meet	Met	Met	Met	

# 2011-12 & 2012-13 Multiple Summative Labels



## Report cards for Portage, Schoolcraft and Vicksburg schools

Below is the state's 2011-12 report card for buildings in the Portage, Schoolcraft and Vicksburg school districts. The percentile column shows how each school ranks in comparison with other schools; for instance, a school in the 70th percentile ranks above 69 percent of school statewide. The next column indicates buildings designated as "reward schools" that serve as models and "focus schools" that have a large achievement gap. Also shown is whether each school achieved Adequate Yearly Progress under the federal No Child Left Behind Law, and the overall grade assigned to each school. Grades are based on state test scores and whether scores are improving or declining.

District	Building	Percentile ranking	Focus or Reward school?	Made AYP?	EdYes! Grade
Portage	Portage West Middle School	94	Reward	Y	B
	Portage Central Middle	70		Y	C
	Port. Northern High School	61		N	C
	Portage North Middle	53		Y	C
	Central Elementary	50		Y	B
	Haverhill Elementary I	44		Y	B
	Woodland Elementary	27		Y	C
	Portage Community High	n/a		N	n/a

Godwin Heights Elem.

Top to Bottom Ranking:  
35<sup>th</sup>

Scorecard: **Lime**

Label: Reward



# 2012-16, Top to Bottom Rankings & Scorecards

## 2013-14 Top to Bottom Ranking School Detail

[Statewide](#) | [ISD](#) | [District](#) | School Detail

### Focus Elementary School Overall Percentile

55th

#### [EMS Math] Composite z-score - click for details -0.7453

- Achievement (z-score): 0.1863
- Improvement (z-score): -0.5744
- Achievement Gap (z-score): -1.8505

#### [EMS Reading] Composite z-score - click for details 0.5713

- Achievement (z-score): 0.7582
- Improvement (z-score): 0.4892
- Achievement Gap (z-score): -0.3931

## 2013-14 Accountability Scorecard

Focus Elementary School

Overall School Status: **Line** 26/32 (81.3%) Points Possible Focus School

2 Met Proficiency Target 1 Met Proficiency Improvement Target 0 Did Not Meet Proficiency Target nor Proficiency Improvement

### Proficiency Summary

Student Group	English Language Arts	Mathematics	Science
All Students	2	2	2
Bottom 30%	0	0	0
White	2	2	2
Economically Disadvantaged	2	2	

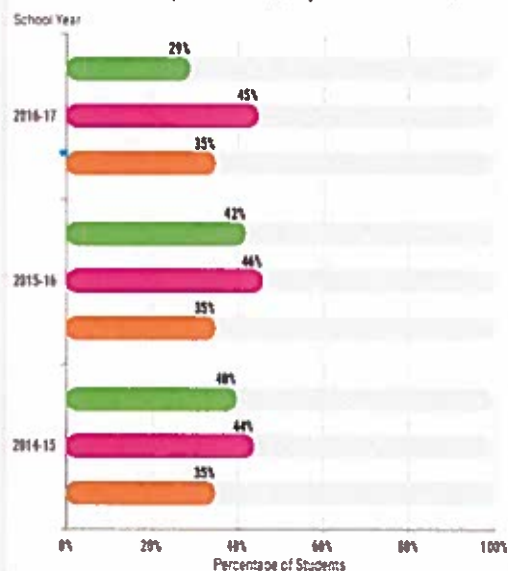
NEW!

## Parent Dashboard for School Transparency

Your window to important school information and facts

### Performance Summary

Percent of students proficient in all subjects on state tests.

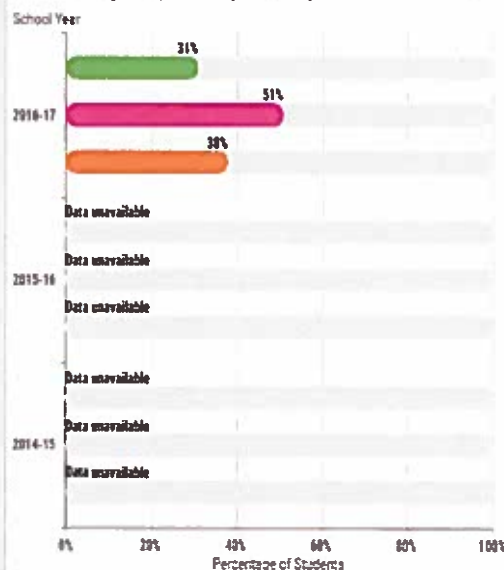


Key:

- A Sample School on MDE Dashboard
- Average of Similar Schools by Demographic
- State of Michigan Average

### Progress Summary

Percent of students who are making progress towards proficiency or increasing their proficiency in all subjects on the state tests



Key:

- A Sample School on MDE Dashboard
- Average of Similar Schools by Demographic
- State of Michigan Average

# Spotlight

MICHIGAN  
Department of  
Education

on Student Assessment and Accountability

February 1, 2018

## New School Accountability Index System Reports and Accountability Student Datafiles

In the next few weeks, the Michigan Department of Education (MDE) will be making new Michigan School Index System reports and accountability student datafiles available for the 2016-17 school year to authorized users of the Secure Site.

The Michigan School Index System was developed to comply with the accountability requirements set forth in the Every Student Succeeds Act of 2015 (ESSA) and represents Michigan's implementation of its federally approved consolidated state plan. Under this plan, schools will receive an overall school index value ranging from 0-100 that indicates performance across

Includes 6 of 8 components of Bill 5526 as an index score

# Michigan

## School Report Card

Sample School Name 2017-2018

Targeted Support School

Sub-group performance drives school label.



**Student Proficiency\***  
Percent of students who scored at or near proficiency for all grades and all content areas

COMPONENT  
GRADE

F

PROFICIENCY RATE

**28%** Includes 3% Advanced



**Student Growth\***  
Percent of students who made adequate yearly growth by maintaining proficiency or closing the gap towards proficiency

COMPONENT  
GRADE

D

GROWTH RATE

**60%**



**Comparison\***  
School achievement is compared to schools with similar demographics

Significantly  
Above Average

Average

Significantly  
Below Average

COMPARISON FACTOR

Within 5% Of Average



**Student Subgroup Performance\*\***  
A measure of how well students in subgroups perform with similar students

Significantly  
Above Average

Average

Significantly  
Below Average

COMPARISON FACTOR

25% of students scored as well as expected

Student Group:

Economically Disadvantaged

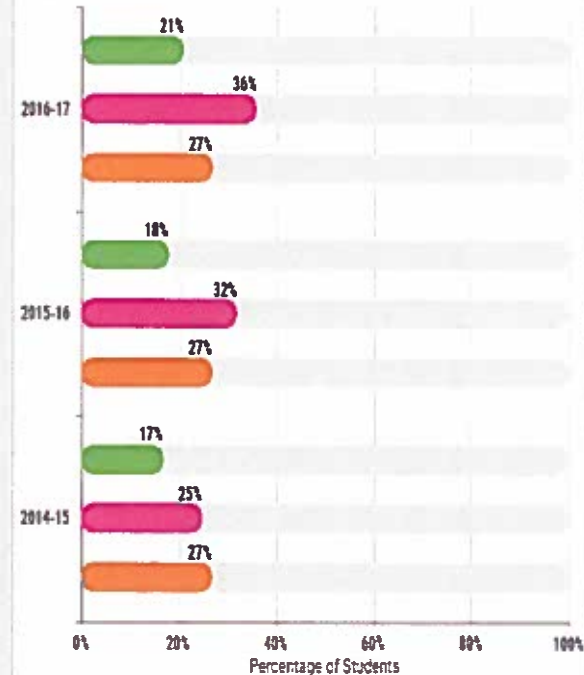


### Performance Summary

Percent of students proficient in all subjects on state tests.



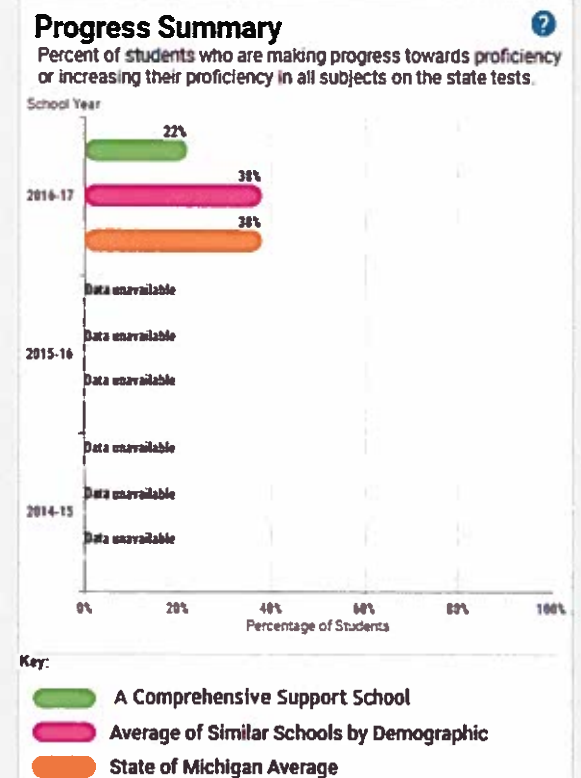
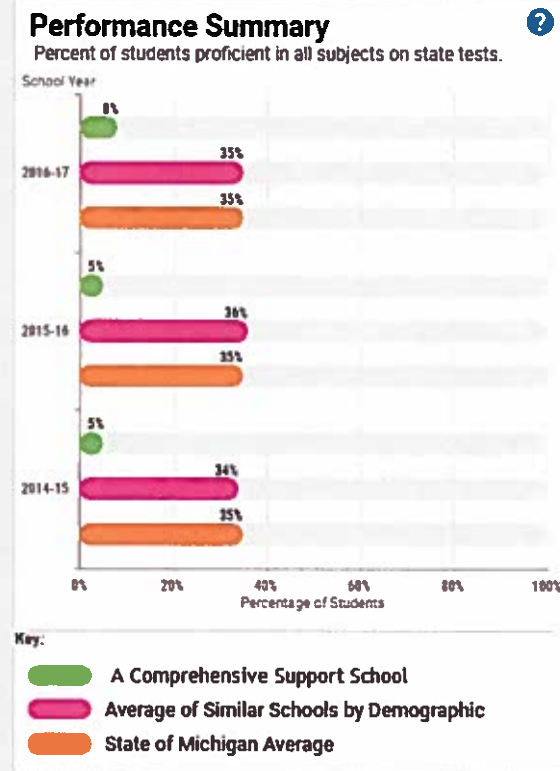
School Year



# Comprehensive Support and Improvement School

- Low proficiency
- Significantly below similar schools
- Low growth

As defined by the commission and required under ESSA.





## Targeted Support School

Sub-group performance drives school label.

### Student Success

Percent of students who attend at least 90% of school days and had fewer than 10 absences

PROFICIENCY RATE

**82%**

COMPONENT GRADE

**B**

### English Learner Progress

Percent of English Learners who scored at or near proficiency or made adequate growth

PROFICIENCY RATE

**60%**

COMPONENT GRADE

**D**

### Assessment Participation\*\*

Percent of student participation on state level assessments

PARTICIPATION RATE

**95%**

COMPONENT GRADE

**A**

### Graduation Rate

Percent of students who graduated in four years or are continuing towards completion

GROWTH RATE

**n/a**

COMPONENT GRADE

**n/a**

\* Factors included in the identification in the reward schools and comprehensive support schools

\*\* Factors used to determine Targeted Support schools

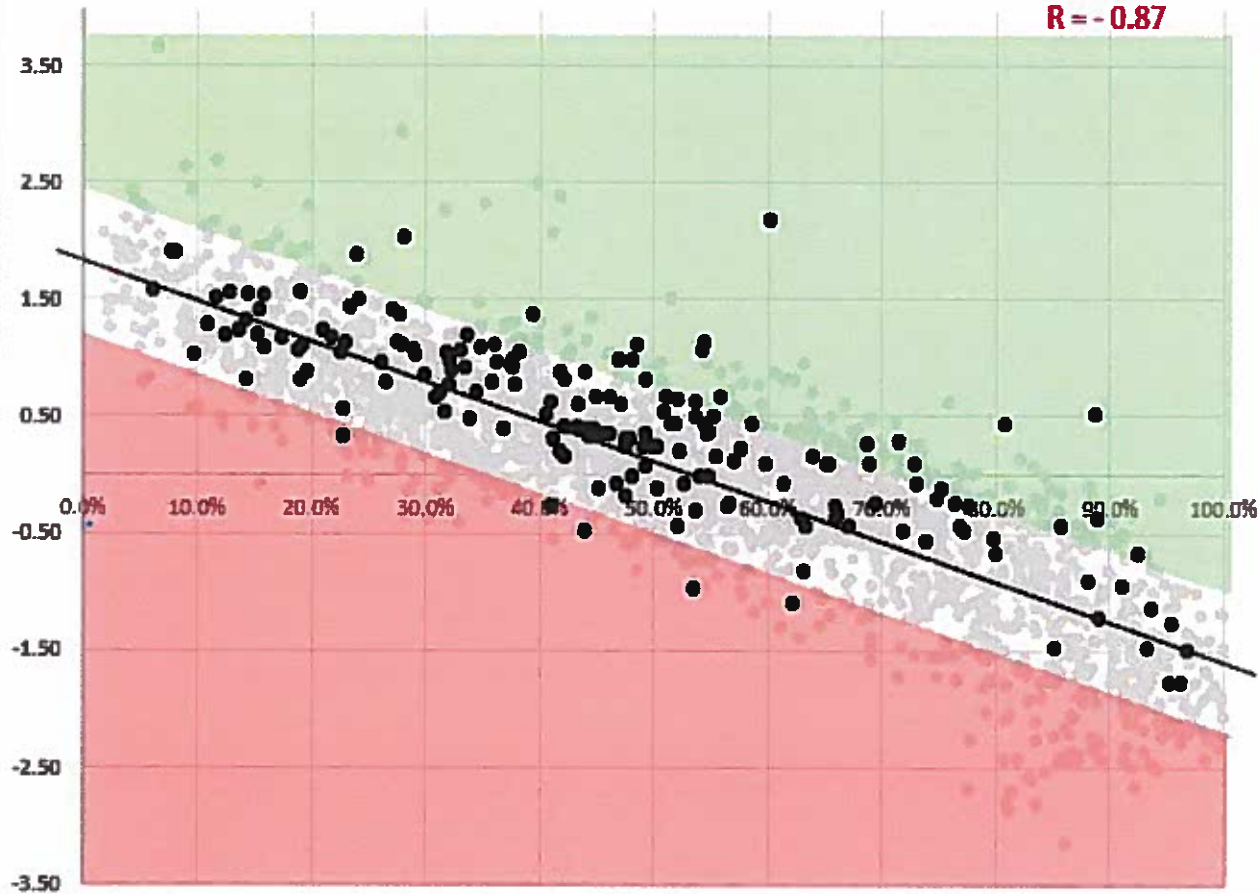
# Similar School Comparison

2012-2014 Average RDG Score vs F/R Lunch - Statewide

$$y = -3.4221x + 1.8242$$

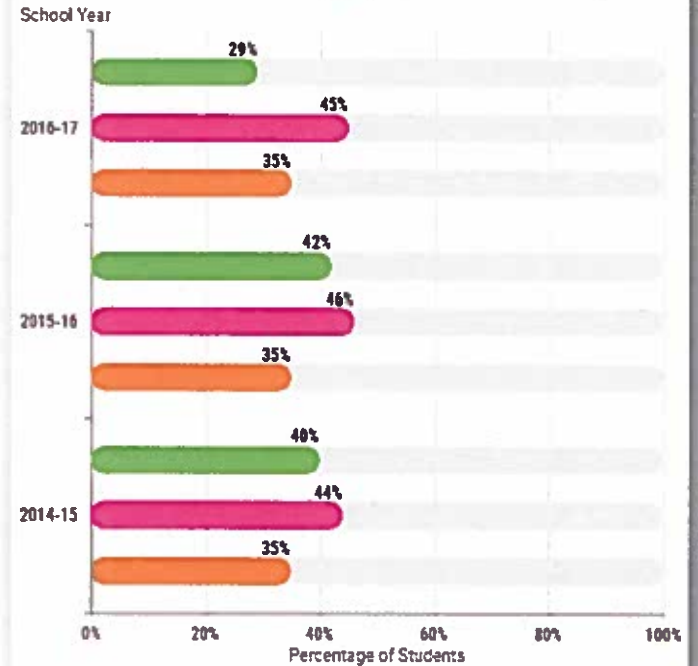
$$R^2 = 0.7575$$

$$R = -0.87$$



## Performance Summary

Percent of students proficient in all subjects on state tests.



Key:

- A Sample School on MDE Dashboard
- Average of Similar Schools by Demographic
- State of Michigan Average

**Michigan 4th and 8th Grade Reading and Math Compared to A-F States 2003 and 2015\***

	4th grade reading			4th grade math			8th grade reading			8th grade math		
	2003	2015	change	2003	2015	change	2003	2015	change	2003	2015	change
Arizona	209	215	6	229	238	9	255	263	8	271	283	12
Arkansas	214	218	4	229	235	6	258	259	1	266	275	9
Florida	218	227	9	234	243	9	257	263	6	271	275	4
Indiana	220	227	7	238	248	10	265	268	3	281	287	6
Louisiana	205	216	11	226	234	8	253	255	2	266	268	2
Mississippi	205	214	9	223	234	11	255	252	-3	261	271	10
New Mexico	203	207	4	223	231	8	252	253	-1	263	271	8
North Carolina	221	226	5	242	244	2	262	261	-1	281	281	NC
Ohio	222	225	3	238	244	6	267	266	-1	282	285	3
Oklahoma	214	222	8	229	240	11	262	263	1	272	275	3
Tennessee	212	219	7	228	241	13	258	265	7	268	278	10
Texas	215	218	3	237	244	7	259	261	2	277	284	7
Utah	219	226	7	235	243	8	264	269	5	281	286	5
Ave. Change			6.3			8.3			2.2			6.1
National Average	216	221	5	234	240	6	261	264	3	276	281	5

Michigan	219	216	-3	236	236	NC	264	264	NC	276	278	2
----------	-----	-----	----	-----	-----	----	-----	-----	----	-----	-----	---

\*Source The Nation's Report Card <https://www.nationsreportcard.gov/>