

6/17/2017

Kevin Kendall, President
Tonia Olson, Chair of the Legislative
Committee



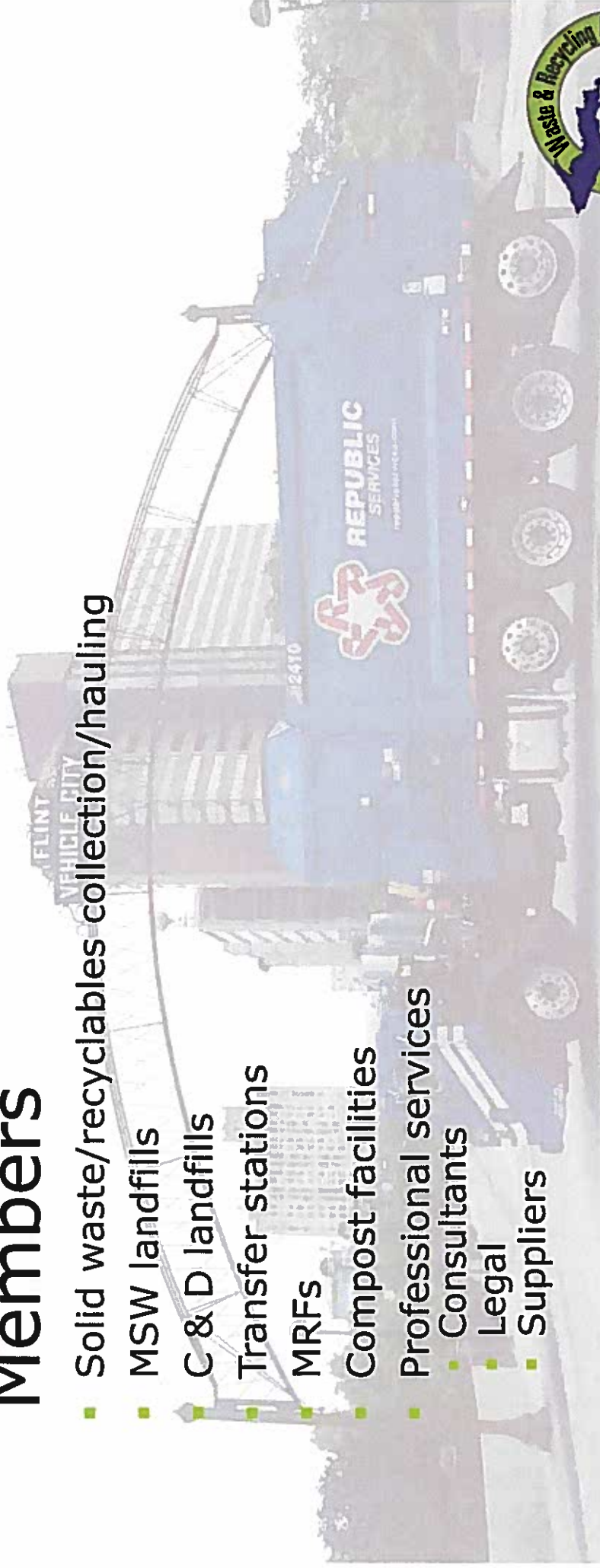
Mission

The Michigan Waste & Recycling Association (MWRA) advocates safe, economically sustainable and environmentally sound waste hauling, disposal, recycling, composting and landfill gas-to-energy programs.



Members

- Solid waste/recyclables collection/hauling
- MSW landfills
- C & D landfills
- Transfer stations
- MRFs
- Compost facilities
- Professional services
 - Consultants
 - Legal
 - Suppliers



Industry contribution

- Economic
 - ~\$990,000,000 revenue
- Employment
 - ~8,000 jobs
- Environmental
 - ~250 facilities
 - ~5,000 pieces of equipment
 - ~11,000,000 million tons managed

US007 4059J3

NATURAL GAS FOR VEHICLES

2

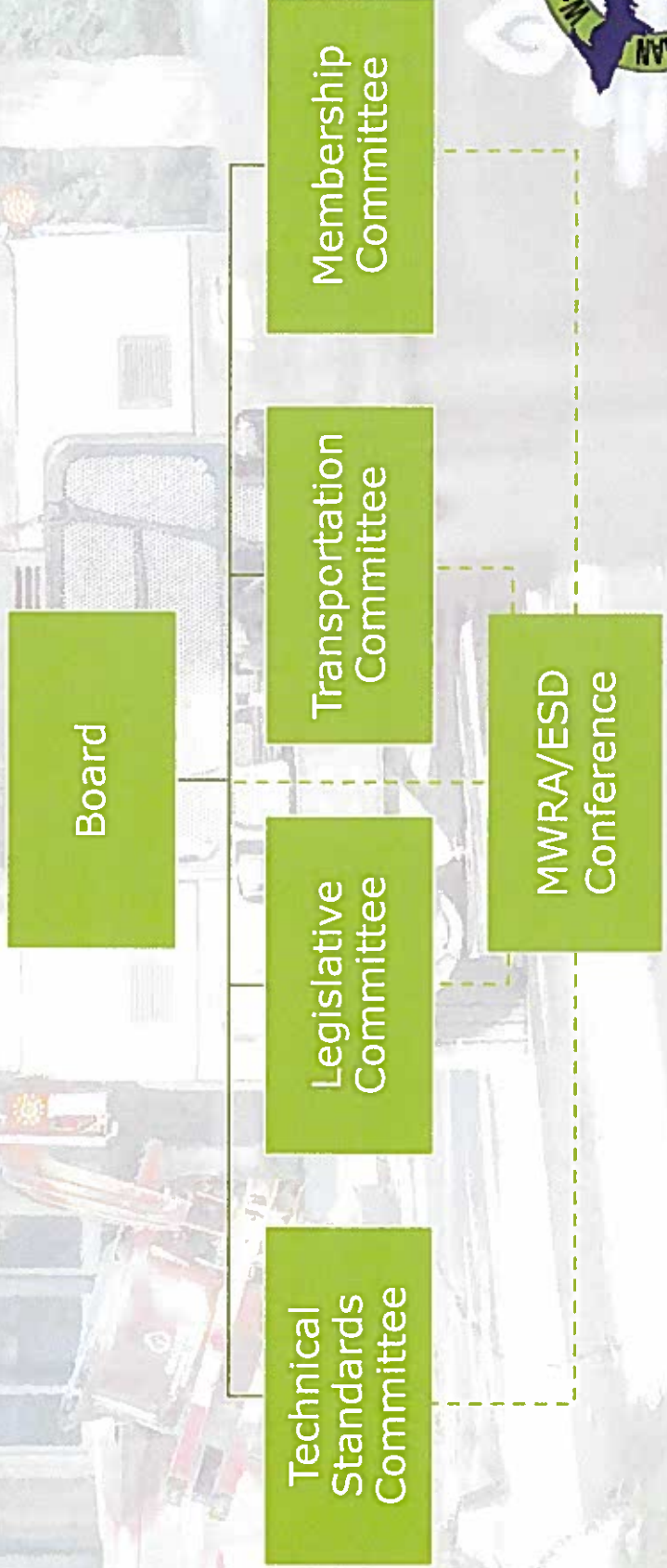
DTE Energy

NaturalGas

Smart energy. naturally.



Structure



Recent Accomplishments

1. Public Act 55 of 2016 (Effective: 6/27/2016)

Initiated effort to pass legislation to provide a simple method of reporting to allow for an annual calculation of the statewide recycling rate



Recent Accomplishments

2. Solid Waste and Sustainability Advisory Panel

Participated in this process which resulted in a report with recommendations to update Part 115, the law that regulates siting, construction, operating and long-term care of disposal areas



Recent Accomplishments

3. Governor's Recycling Council

Member appointed to this council, which developed a report with recommendations to double the recycling rate in Michigan



Looking Forward

- Part 115 Update

Move from solid waste disposal focus to materials management focus, using scientific data for risk-based environmental protection standards for siting, regulation and long-term care



Looking Forward

- Doubling Michigan's Recycling Rate

Focus:

Engagement

Market development



THANK YOU!

